



Eliminates sharp 90° cable bends inside enclosures. Narrow tongue fits into confined spaces such as circuit breakers, motor starters, etc. Angle area of lug is pre-insulated to facilitate barrel insulation after compression.

Material: Copper

Finish: Tin Plate

Insulation: PVC Dip Coated – 90°C rating

90° Flag Lugs – 600V Applications

T&B Cat. No.	CU Cable Size	Stud Size (in.)	Phase	Dimensions (in.)							Die Code	
				A	B	C	D	E	F	G		
10-FT-14NTK	#1 Weld 1/0 225/24	¼	1	1.38								42
			2	2.13	.94	.64	.19	.62	.25	2.50		
			3	2.88								
20-FT-14NTK	1/0 Weld 2/0 275/24	¼	1	1.93								45
			2	2.93	1.14	.64	.22	.70	.25	2.50		
			3	3.93								
30-FT-14NTK	2/0 Weld 3/0 325/24	¼	1	2.11								50
			2	3.11	1.14	.78	.22	.77	.25	2.75		
			3	4.11								
40-FT-14NTK	3/0 Weld 4/0 450/24	¼	1	2.04								54
			2	3.04	1.14	.78	.25	.86	.25	3.13		
			3	4.04								
250-FT-14NTK	250 kcmil	¼	1	2.31								62
			2	3.44	1.20	.98	.25	.92	.31	3.00		
			3	4.57								
350-FT-12NTK	350 kcmil	½	1	2.31								71
			2	3.69	1.45	1.09	.31	1.09	.56	3.94		
			3	5.06								
500-FT-12NTK	500 kcmil	½	1	2.56								87
			2	4.06	1.45	1.20	.38	1.28	.56	4.19		
			3	5.69								
750-FT-58NTK	750 kcmil	¾	1	2.63								106
			2	4.50	1.70	1.49	.38	1.50	.81	4.39		
			3	6.25								

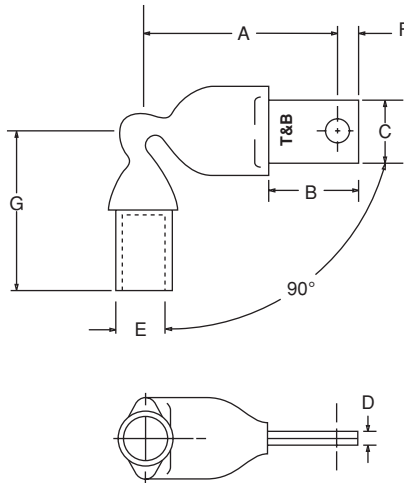
Notes:

1. Each Cat. No. consists of three connectors, (1) connector per phase.

Installation tools: Hand or hydraulic tools

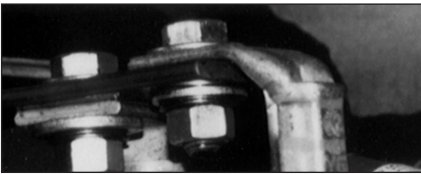
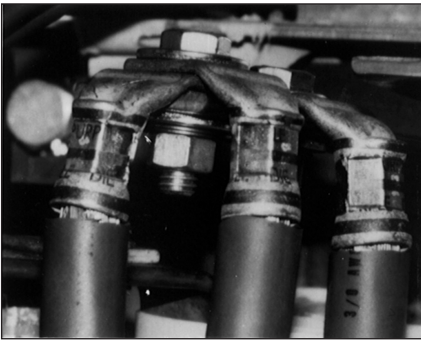
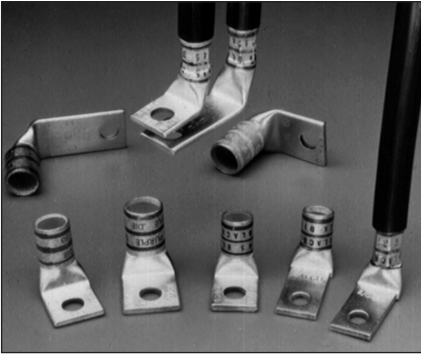
Tooling: Pg. 79-100

Die Selector Chart: Pg. 105-109



Color-Keyed®

Color-Keyed® Connectors



Color-Keyed® Special Lugs for Special Problems – Angled, Shaped and Trimmed the Way You Often Need Them

Thomas & Betts can solve your difficult wire bending and terminating problems in confined power distribution panels, switchgear and motor control enclosures.

We have the design and production capability to deliver exactly the type lug you need, shaped the way you need.

- Straight, 45° and 90° angle
- Stacking or non-stacking
- Narrow tongue or standard
- Tin, silver, lead, nickel

Thomas & Betts offers an extensive line of copper Color-Keyed® lugs for #8 AWG through 1000 kcmil flex and code cables. The lug tongues are modified in several different configurations to meet your exact needs: 45° and 90° bend angles, narrow tongues to fit into circuit breakers, offset tongues to stack two cables, and special stud hole drilling. These special configurations let you:

- (1) run cable directly to the bus bar with no bending,
- (2) terminate into very narrow spaces, and
- (3) utilize minimal bus bar space.

The specially designed lugs help you “clean up” your cabling in crowded enclosures.

The photographs show some examples of how and where the lugs can be used.

Customized Color-Keyed® Connectors for Copper Cables

- Standard and special tongue angles, stacking and non-stacking, bolt holes sizes and centers, protective platings.
- Specially modified one and two hole copper Color-Keyed® compression lugs, Series 54100, 54200, 54850BE and 54930BE for flex and code copper stranded cables. Material high conductivity wrought copper.
- Minimum order quantity: Standard package quantity by cable size. Consult factory for price and delivery. All customized lugs are made to order. A.R.O. Non-cancellable.

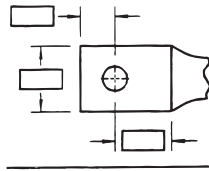
Color-Keyed®

Color-Keyed® Connectors

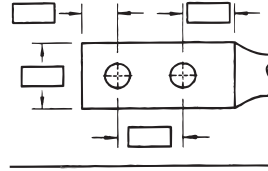
Tongue Specifications – See Chart “A” For Dimensions

Stud Sizes

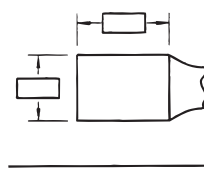
- #8 1/2
- #10 5/8
- 1/4 3/4
- 5/16 7/8
- 3/8 1



Single Hole



Double Hole



Blank

Chart A

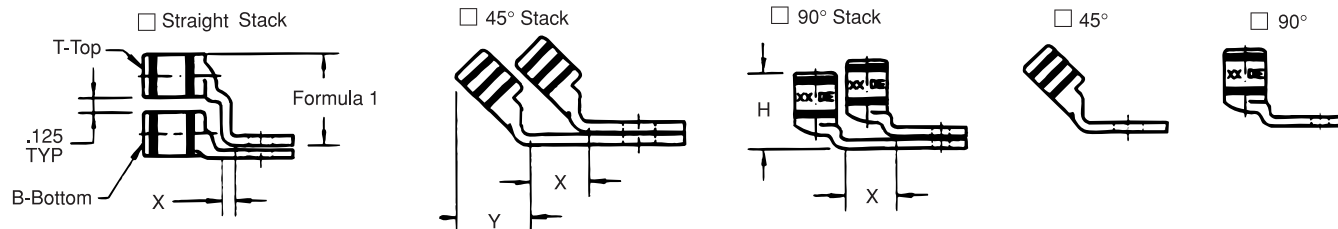
Nominal Bolt Hole Size .015	Hole Offset .030	Wrench Clearance Min.	Tongue Width Cable Size										
			#8 Code #8 Weld	#6 Code #6 Weld	#4 Code #4 Weld	#2 Code #2 Weld	#1 Code #1 Weld	1/0 Code 1/0 Weld	2/0 Code 2/0 Weld	3/0 Code 3/0 Weld	4/0 Code 4/0 Weld	250 Code	
#8	.173	.200	.240	.406	.437	.562	.593	.672	.750	.825	.937	1.030	1.125
#10	.204	.218	.250	.406	.437	.562	.593	.672	.750	.825	.937	1.030	1.125
1/4	.281	.250	.312	.469	.500	.562	.593	.672	.750	.825	.937	1.030	1.125
5/16	.344	.375	.406	.562	.562	.562	.675	.672	.750	.825	.937	1.030	1.125
3/8	.406	.375	.440	.578	.578	.594	.675	.672	.750	.825	.937	1.030	1.125
1/2	.531	.500	.562	–	–	–	.750	.750	.750	.825	.937	1.030	1.125
5/8	.656	.812	.875	–	–	–	–	–	–	–	.937	1.030	1.125
3/4	.812	.750	.770	–	–	–	–	–	–	–	–	–	–
*7/8	.937	.875	.890	–	–	–	–	–	–	–	–	–	–
*1	1.062	.937	1.000	–	–	–	–	–	–	–	–	–	–

* These bolt holes available in one hole lug only.

Chart B

Cable Size	Tongue Thickness	Straight Lug Barrel Length Plus Transition		Barrel		Dim “X” Stacked Lugs			Dim “Y”		Dim “H”	
		Short	Long	O.D.	I.D.	Straight	45°	90°	Short	Long	Short	Long
		#8	.080	.635	.935	.260	.180	.158	.478	.394	.595	.808
#6	.081	.675	.975	.296	.215	.134	.544	.432	.587	.799	.767	1.067
#4	.099	.685	.985	.365	.266	.175	.622	.502	.637	.849	.838	1.138
#2	.108	.815	1.115	.410	.302	.216	.649	.535	.711	.923	.958	1.258
#1	.106	.825	1.275	.467	.361	.212	.731	.592	.710	1.028	.956	1.406
1/0	.125	.975	1.325	.571	.396	.250	.789	.646	.794	1.042	1.075	1.425
2/0	.125	.965	1.315	.571	.446	.250	.859	.696	.829	1.077	1.125	1.475
3/0	.125	1.085	1.435	.632	.507	.250	.946	.757	.900	1.148	1.225	1.575
4/0	.137	1.255	1.705	.701	.564	.274	1.031	.826	1.015	1.333	1.387	1.837
250	.137	1.375	1.925	.766	.629	.274	1.123	.891	1.085	1.474	1.487	2.037
300	.153	1.900	2.675	.850	.660	.459	1.226	.975	1.180	1.726	1.924	2.679
350	.177	2.090	2.896	.926	.720	.531	1.333	1.103	1.267	1.830	2.096	2.896
400	.173	2.460	2.980	.960	.757	.519	1.370	1.085	1.551	1.913	2.484	2.984
500	.218	2.670	3.610	1.100	.852	.654	1.514	1.225	1.629	2.266	2.669	3.619
600	.244	2.900	3.490	1.200	.926	.732	1.630	1.325	1.762	2.147	2.897	3.497
700	.228	2.784	–	1.255	.997	.684	1.662	1.375	1.780	–	3.011	–
750	.270	3.050	3.925	1.330	1.030	.810	1.745	1.455	1.827	2.434	3.050	3.925
800	.266	3.213	–	1.375	1.079	.800	1.728	1.625	1.952	2.787	3.213	4.554
900	.313	3.450	4.550	1.500	1.145	.940	1.900	1.650	2.065	–	1.387	–
1000	.297	3.356	4.500	1.550	1.203	.890	2.070	1.675	2.031	2.787	1.487	4.506

Note: Stacking lugs are available for one bolt only.
 Consult Factory: Straight: 700 kcmil & up
 45°: 400 kcmil & up
 90°: 500 kcmil & up



Formula 1 = (.125 + 2 (OD) + .037 – Tongue Thickness)

Chart C

Bolt Hole Size	Tongue Width .030 Code Cable Size										
	300 kcmil 4/0 Weld	350 kcmil	400 kcmil	500 kcmil 4/0 Weld	600 kcmil 5/0 Weld	1325/24	700 kcmil	750 kcmil	800 kcmil	900 kcmil	1000 kcmil
#8	–	–	–	–	–	–	–	–	–	–	–
#10	–	–	–	–	–	–	–	–	–	–	–
1/4	1.250	1.355	1.410	1.605	1.745	1.805	1.840	1.935	2.010	2.180	2.265
5/16	1.250	1.355	1.410	1.605	1.745	1.805	1.840	1.935	2.010	2.180	2.265
3/8	1.250	1.355	1.410	1.605	1.745	1.805	1.840	1.935	2.010	2.180	2.265
1/2	1.250	1.355	1.410	1.605	1.745	1.805	1.840	1.935	2.010	2.180	2.265
5/8	1.250	1.355	1.410	1.605	1.745	1.805	1.840	1.935	2.010	2.180	2.265
3/4	1.250	1.355	1.410	1.605	1.745	1.805	1.840	1.935	2.010	2.180	2.265
*7/8	–	–	–	1.605	1.745	1.805	1.840	1.935	2.010	2.180	2.265
*1	–	–	–	–	1.745	1.805	1.840	1.935	2.010	2.180	2.265