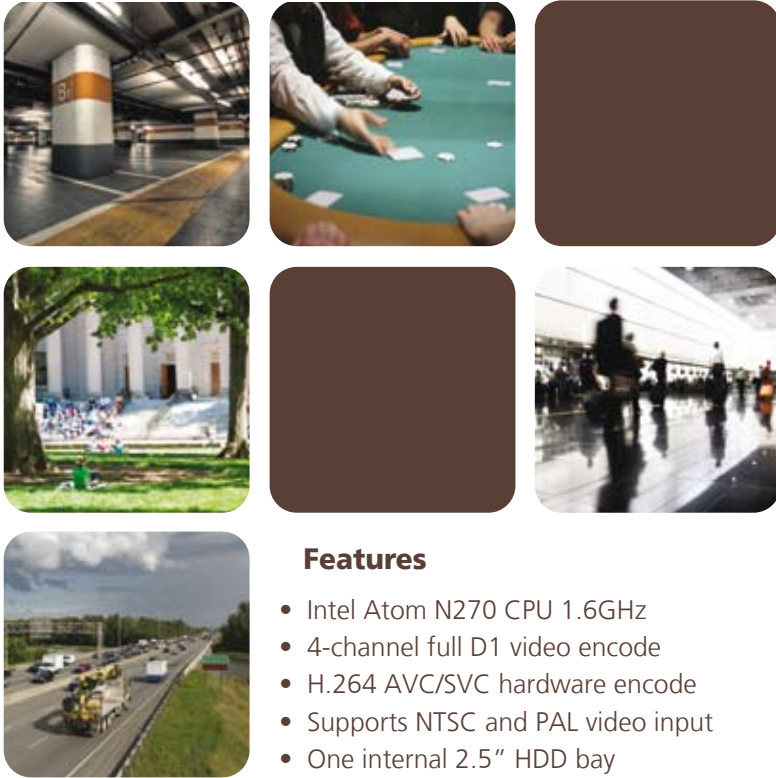


# VW-1104

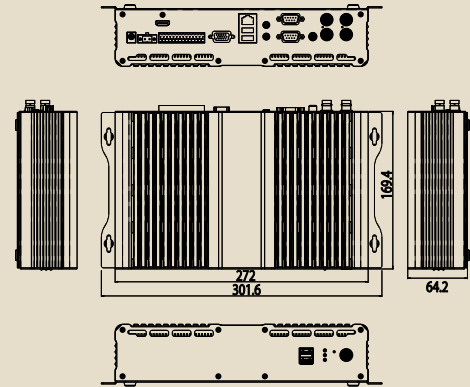
4 Channel H.264 AVC Hybrid Mobile DVR



## Features

- Intel Atom N270 CPU 1.6GHz
- 4-channel full D1 video encode
- H.264 AVC/SVC hardware encode
- Supports NTSC and PAL video input
- One internal 2.5" HDD bay
- 1 GB Onboard RAM
- 4 alarm-input and 2 relay-output
- 1 RS485, 12V DC
- Gigabit Ethernet
- Scalable Video Coding (SVC)

## MECHANICAL DRAWING



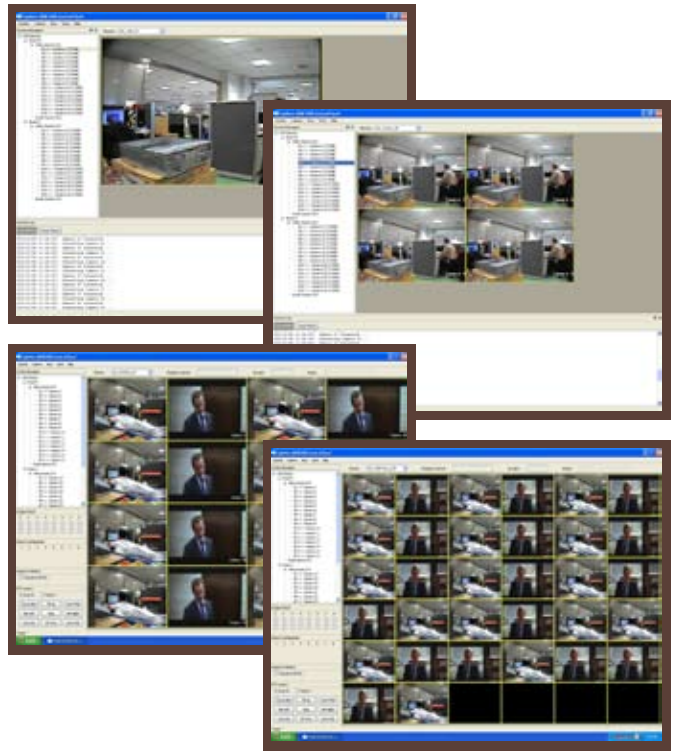
## Applications

- Hybrid Mobile DVR
- Intelligent Transportation System
- Industrial Surveillance
- Video Broadcasting
- Video Surveillance
- Video Analytics
- Video on Demand



FEATURE	DESCRIPTION		
<b>Form Factor</b>	Fanless Embedded System		
<b>Platform</b>	Processor	Intel Atom processor N270, 1.6GHz	
	Chipset	Intel 945GSE + ICH7M	
	FSB	400/533MHz FSB	
	BIOS	AMI BIOS 16Mbit Flash ROM	
<b>H.264 Video</b>	Compression	H.264/AVC	
	Video Input	4 x BNC inputs CVBS 1.0Vp-p, with 75 ohm loading for video input	
	Resolution	4 channel Full D1 720 x 480 NTSC, 720 x 576 PAL	
	Frame Rate	NTSC: 120FPS / PAL: 100FPS	
<b>Audio</b>	Compression	1 channel G.711	
<b>Memory</b>	Technology	DDRII 400/533 SDRAM	
	Onboard	1GB DDR2 IC	
	Max Capacity	2GB	
	Expansion	1 x 200-pin SO-DIMM slot, MOQ	
<b>Audio/Video Inputs</b>	Video	4 channel video inputs via BNC connectors	
	Audio	1 channel audio input via RCA connector	
<b>OS Support</b>	Linux, Windows		
<b>Storage</b>	Interface	SATA II x 1, CF x 1	
	Bay	1 x 2.5" HDD bay	
<b>Graphics</b>	Integrated Intel graphics core Gen 3.5		
<b>Super I/O</b>	Winbond W83627		
<b>Networking</b>	1 GbE NIC		
	BNC	4 port BNC connectors for video input	
	RCA	1 port RCA connector for audio input	
	USB 2.0	4 ports	
	Serial	2 x high speed UARTs	
	VGA	D-Sub 15 pin VGA port (1920 x 1080)	
	HDMI	1 HDMI port (2048 x 1536)	
	LAN	1 RJ45 GbE LAN port	
<b>I/O Connectors</b>	Audio	Mic In, Line Out	
	One RS-485 for PTZ, 4 alarm-input and 2 relay-output		
	PC Health Monitoring	Monitors CPU and chassis environment with trip sensors	
	<b>LED</b>	Power On LED (Green)	
		LAN Activity LED (Yellow)	
		HDD Activity (Yellow)	
	<b>Wireless</b>	Communication Board	(Optional) GPS, 3G, WiFi communication module
<b>Buttons</b>	Power Switch		
	Reset Button		
<b>Power</b>	Input	2 pin Phoenix connector DC in jack	
	Input Voltage	DC 10~36V, up to 5 AMP	
<b>Environmental Parameters</b>	Operating Temperature	0° to 45°C	
	Storage	-20° to 70°C	
	Relative Humidity	5% to 95%	
<b>Software</b>	Application	EyeShot 2000 Control Panel (Windows XP)	
	SDK	Linux, Windows CE FCC Class A RoHS	
<b>Approvals &amp; Compliance</b>	FCC Class A		
	RoHS		
<b>Ordering Information</b>	VW-1104	Fanless Intel Atom Embedded System with H.264 H/W codec, 4 channel video and 1 channel audio	
	VW-1104WG	Fanless Intel Atom Embedded System with H.264 H/W codec, 4 channel video and 1 channel audio, GPS + 3G + WiFi communication board	

## EYESHOT 2000 CONTROL PANEL



### Software Features

- Motion Detection
- Video Loss Detection
- Scalable Video Coding (SVC)
- Night Detection
- RAW Data Preview

### SDK Features

- Encode and Alarm I/O
- Streaming
- Decode
- Display (X-Window for Linux, DirectDraw for Windows)
- RS-485 Control

### SDK OS Support

- Windows XP
- Linux: Ubuntu 8.04, Fedora 10, CentOS 5.2

### About Lanner

Founded in 1986 and publicly listed (TAIEX: 6245) since 2003, Lanner Electronics Inc. is an ISO 9001 certified designer and manufacturer of reliable, frontline network security, network video and applied computing platforms. With headquarters in Taipei, Taiwan and branches in the U.S. and China, Lanner is uniquely positioned to deliver custom technical solutions with localized, value-added service.

### Contact information

Lanner Electronics Inc  
7F, 173, Section 2 Datong Road  
Sijhih City, Taipei County 221, Taiwan

**T** +886 2 86926060  
**F** +886 2 86926101  
**E** sales@lannerinc.com  
**W** www.lannerinc.com



Specifications subject to change without notice.

All brand names and trademarks are the registered properties of their respective owners.

Copyright 2009 Lanner Electronics Inc.

**Lanner**  
creating value in applied computing