

G-Series Toggle Switches



General purpose workhorses with options tailored to meet most any need. Ratings to 20A 277VAC, international approvals, various actuator, bushing, termination, and circuit choices allow this toggle switch to easily integrate into a variety of different applications. The G-Series has a storied history in the Marine, Food Service, Generator, Industrial Control, and Office Automation markets and is appropriate for usage in low voltage DC applications as well.

Dielectric Strength

UL/CSA: 1000V - live to dead metal parts & opposite polarity
 VDE: 4000V - live to dead metal parts; 1250V - opposite polarity & across open contacts

Electrical Life

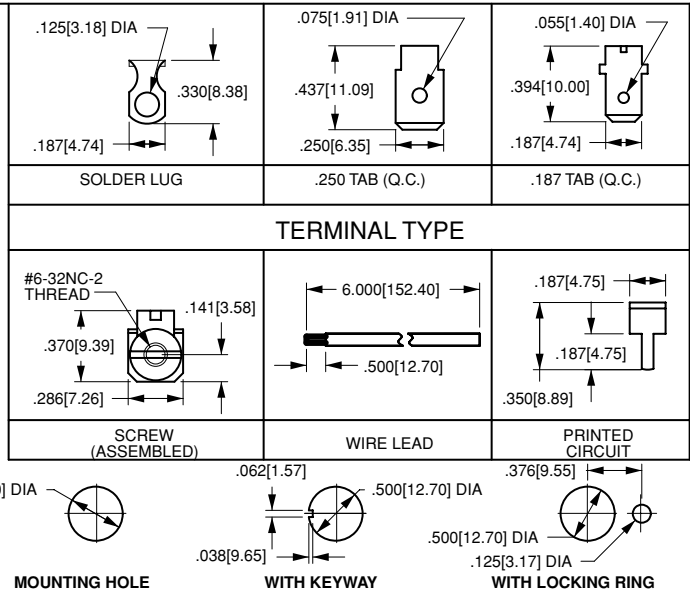
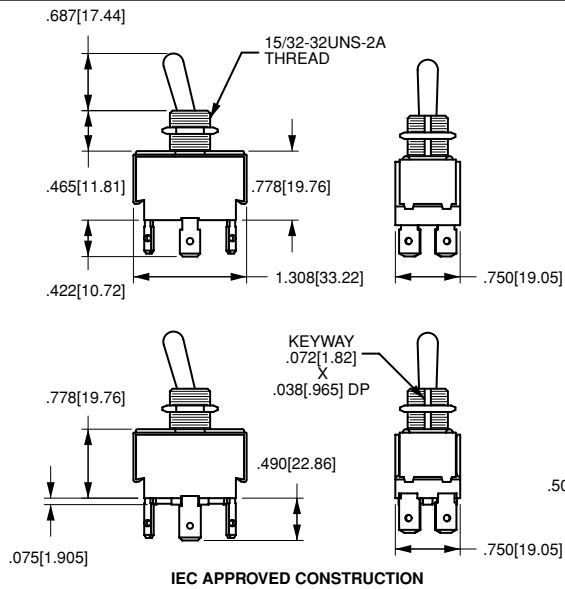
50,000 cycles- maintained
 25,000 cycles- momentary

Mechanical Life

100,000 cycles

Operating Temperature

32°F to 185°F (0° to 85°C)



2GM51 - 73

¹ Base Part Number

² Actuator Style

1 BASE PART NUMBER: SERIES/POLES/CIRCUITRY/RATING/TERMINATION³

Single Pole in Double Pole base 10A 250VAC, 15A 125VAC, 3/4 HP 125-250VAC				Double Pole		
solder lug	.250 tab	screw term.		solder lug	.250 tab	screw term.
2GA50	2GA51	2GA54	ON-NONE-OFF	2GK50	2GK51	2GK54
6GA5A	6GA5B	6GA5E	(ON)-NONE-OFF	6GK5A	6GK5B	6GK5E
6GA5L	6GA5M	6GA5S	ON-NONE-(OFF)	6GK5L	6GK5M	6GK5S
2GB50	2GB51	2GB54	ON-NONE-ON	2GL50	2GL51	2GL54
6GB5A	6GB5B	6GB5E	ON-NONE-(ON)	6GL5A	6GL5B	6GL5E
2GC50	2GC51	2GC54	ON-OFF-ON	2GM50	2GM51	2GM54
6GC5A	6GC5B	6GC5E	ON-OFF-(ON)	6GM5A	6GM5B	6GM5E
6GC5L	6GC5M	6GC5S	(ON-OFF-(ON)	6GM5L	6GM5M	6GM5S
10A 250VAC, 15A 125VAC, 12 (6)A 250VAC T85/55 ENEC/VDE Approved ⁴						
2GA90	2GA91	-	ON-NONE-OFF	2GK90	2GK91	
2GB90	2GB91	-	ON-NONE-ON	2GL90	2GL91	
2GC90	2GC91	-	ON-OFF-ON	2GM90	2GM91	

Additional ratings up to 20A 125-277VAC, 1 1/2 HP 125VAC, 2HP 250 VAC and special circuits available. Consult factory for specifics.

2 ACTUATOR STYLE⁴

	unsealed	sealed	toggle length	bushing length
BAT ⁵	73	78	0.687	0.465
PADDLE	NBL3	NBL8	0.687	0.465
BAT ²	D-3B-B	-	0.687	0.379
PADDLE ²	-	D-4B-B	0.687	0.379

- NOTES
- Not available with 73 or NBL3 style toggles, T55 with 78 and NBL8 style toggles.
 - All nylon bushing and toggle.
 - Consult factory for .187 tab, wire lead and combination screw/tab/solder lug termination callouts.
 - Additional actuator options available. Consult factory.
 - Nylon toggle with black ebanol plated bushing.
 - () Indicates momentary function.