

Industrial Wallmount System

FTS905V



- Accommodates 20 Slot Backplane
- Two Standard Floppy Drives; Four Half-Height 5.25" IDE or SCSI Devices
- Front Panel LEDs
- (3) 90 CFM Hot-Swap Fans
- Dual 300 or 400 W, AC or DC, AT or ATX Power Supply System
- UL and FCC Certified
- 8.75" (5U) H x 19" W x 24" D

SPECIFICATIONS:

POWER SUPPLIES

- 300 or 400 watt hot-swappable, redundant power supply system.
- Power supplies removable from the front of the chassis.
- Universal AC input capability or -48 volt DC input.
- Dedicated Internal fans for independent cooling of each power supply.

PERIPHERAL SUPPORT

- (4) front accessible, 5.25" drive bays capable of accepting hot-swap drive carriers.
- Top panel I/O connections.

DIMENSIONS

- 24" high x 19" wide x 9.9" deep.

STATUS INDICATION

- A standard LED display panel provides system status and alarm indications on voltages, fans, temperature, and other operating parameters. The LED display can be configured for two independent systems.

OPERATING ENVIRONMENT

- Temp 0 - 50°C
- Humidity 10 - 90% non condensing.

BACKPLANE SUPPORT

- Multi-layer, low noise, minimal capacitance passive backplanes.
- Twenty slots maximum, ISA, EISA, PCI.
- Split backplane options support multiple systems per chassis.

COOLING

- 3-90 CFM fans for total of 270 CFM
- Consideration taken to direct airflow to the CPU area of the backplane.
- Separate fans for power supplies
- Hot-swappable fans

CABINET FINISH

- Polyurethane textured finish. Color beige. Easily removable top cover.

FRONT PANEL CONTROLS

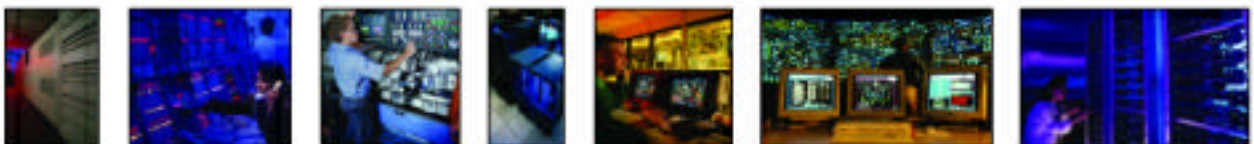
- Power Supply on/off

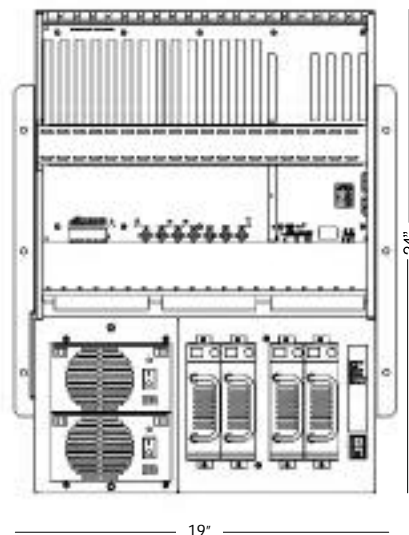
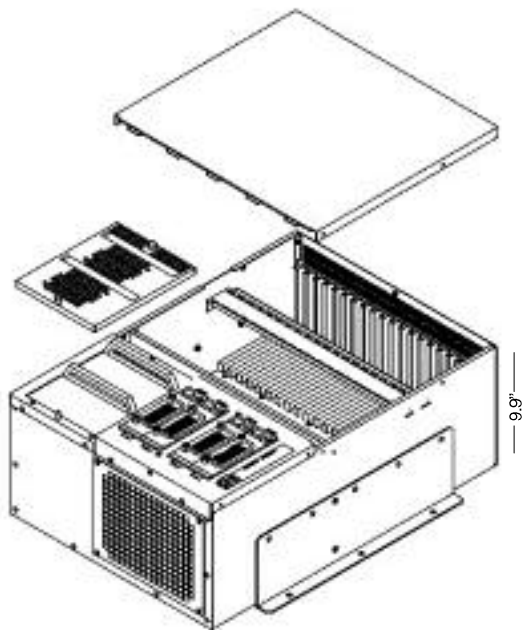
TOP PANEL CONTROLS

- System on/off

TOP PANEL I/O

- (1) standard /AT keyboard connectors
- (2) DB9 serial connectors
- (1) DB25 parallel connectors





The FTS905V represents the state of the art in 19" wallmount computer chassis. The combination of an attractive enclosure, power supply options, fault tolerance, serviceability, diagnostic features, cooling, high slot count, and large storage capacity is unequaled in one package.

The chassis is manufactured of 18 gauge steel that is painted or plated for corrosion resistance. The outside is painted with polyurethane paint. The door on the front allows access to the power supplies and power supply air filter.

The drive bay area will accept 4 standard 5.25" half height drives. Any combination of floppies, hard drives, tapes or CD-ROMs can be used in the drive bays. When combined with the appropriate disk controller, a multi-gigabyte RAID configuration can be installed in the FTS905V.

The front loading, dual, hot-swappable, power subsystem contains power supplies which operate in a load sharing redundant mode with a self contained airflow system. By sharing the system load equally between the power supplies, both units operate cooler than either a single supply or the dominant supply in a typical hot-standby system. In the unlike-

ly event that one of the power supply modules should fail, each individual supply is capable of fully supplying the load for the entire system at up to 50°C. LED indicators on each power module provide an indication of individual power supply status. The AC power supplies manually adjust for input voltage and frequency between nominal 110-220 VAC, 50-60Hz. The FTS905V can be configured for AC or DC input voltage. The twin loading hot-swappable supplies come in 300 or 400 Watt configurations.

Hot-swappable fan assemblies rated at 90 CFM each provide the main cooling for the card cage area and the hard drives. The fans have a single captive on top that can be retracted to remove the fan. All fans have outputs which can be monitored by the CPU's System Monitor to insure proper operation. If one should stop operating, the System Monitor could be configured to trigger an alarm and illuminate an LED indicator on the status panel. The air filters are easily accessible for removal and cleaning and are mounted on the inside of the bottom panel for the main cooling fans and on the left sides of the chassis for an additional air entry area.

The front loading card cage allows easy access and quick installation and removal of plug-in cards in the passive backplane. Screws hold the cover in place while the hold-down bar insures the add-in boards will remain in position for reliable operation. The card cage area can be configured with any of DTI's ISA, EISA & PCI passive backplanes up to 20 slots.

The FTS905V has, as a standard feature, a LED status/indicator panel for use with DTI CPU cards equipped with system monitoring capabilities. The LED panel will provide status of fans, internal temperature, voltage signal conditions and other conditions. Contact DTI Sales & Marketing Department for more information.



All products are shipped FOB factory (MS). Specifications subject to change without notice. Trademarks are the property of their respective owners. Copyright 2001 by Diversified Technology. All rights reserved.

For more information or to order, please contact us.