

# 100MC/100MCX Ready Access Splice Closures

■ Outside Plant for  
Business-Critical Continuity

## Key Features

- Designed for load-coil mounting to provide versatility: one unit for splicing, distribution, or load point
- Polyethylene construction; stainless steel external parts provide long life
- 100MCX is supplied with two eyelet-ended bonding harnesses; Termifoil bonding system in 100MC to meet most bonding system standards
- Branch nozzle kits available so lateral cables can be placed at any time
- Numbered drop wire entrances for good housekeeping

## Description

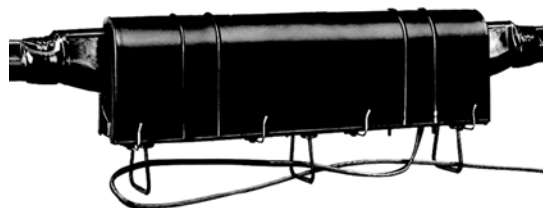
100MC/100MCX Ready Access splice closures provide access to aerial figure "8" cables for straight and branch splices and service drops, while providing weather protection for the splice. The 100MC closure incorporates a strand bonding system that does not need removal of the messenger insulation and two Termifoil-ended bonding harnesses. The 100MCX is supplied with two eyelet-ended bonding harnesses.

Ready Access splice closures accommodate either four 3-pair 381 series protected terminal blocks, or four 145-type terminal blocks to meet most terminal requirements.

The insulation-piercing hanger clamp, which connects to the messenger strand and shield grounding harness, creates continuity without removal of messenger strand insulation. No shield tabbing is required. The lift-off detachable cover tie snaps to the base for greater access during installation. Nozzles are separate from the base and the drop-wire rings snap in for ease of installation.

## Application

The 100MC is used for enclosing straight, branch, and terminal splices. The 100MC/100MCX will accommodate cable sizes from .4 to 1.2 inches in diameter with messenger cable up to 1/4" diameter and are for single cable entry.



100MC



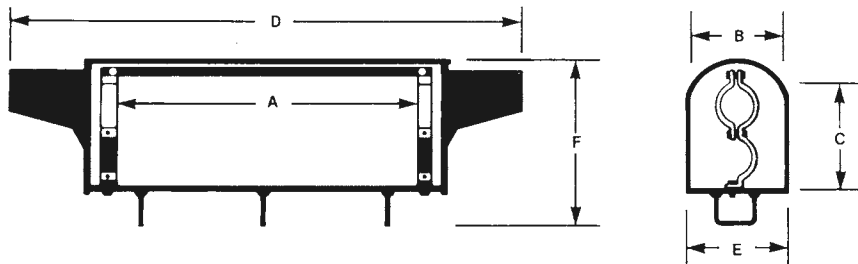
100MCX Bonding Harness

# 100MC/100MCX Ready Access Splice Closures

## Dimensions

Catalog Number	Part Number	A	B	C	D	E	F
100MC	F003790	14.06-in. (357.12mm)	2.50-in. (63.50mm)	4.31-in. (109.57mm)	24.18-in. (614.43mm)	3.06-in. (77.72mm)	4.81-in. (122.17mm)
100MCX	F003792	14.06-in. (357.12mm)	2.50-in. (63.50mm)	4.31-in. (109.57mm)	24.18-in. (614.43mm)	3.06-in. (77.72mm)	4.81-in. (122.17mm)

**NOTE:** For Y-branch kits, nozzle kits, hanger bracket kits, messenger insulators, end plugs and sealing tape, see Accessories.



**Straight Splice Shown**

## Emerson Network Power.

The global leader in enabling business-critical continuity.

- AC Power Systems
- Embedded Power
- Precision Cooling
- Connectivity
- Integrated Cabinet Solutions
- Services
- DC Power Systems
- Outside Plant
- Site Monitoring
- Embedded Computing
- Power Switching & Control
- Surge & Signal Protection

### Emerson Network Power Energy Systems

4350 Weaver Parkway, Warrenville, IL 60555  
 Toll Free: 800-800-1280 (USA and Canada)  
 Telephone: 440-246-6999 Fax: 440-246-4876  
[www.EmersonNetworkPower.com/EnergySystems](http://www.EmersonNetworkPower.com/EnergySystems)

© 2006 Emerson Network Power Energy Systems, North America, Inc. All rights reserved.

The Emerson logo is a trademark and a service mark of Emerson Electric Co. Emerson Network Power is a division of Emerson Electric Co.

Printed in USA

