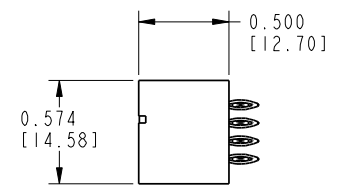
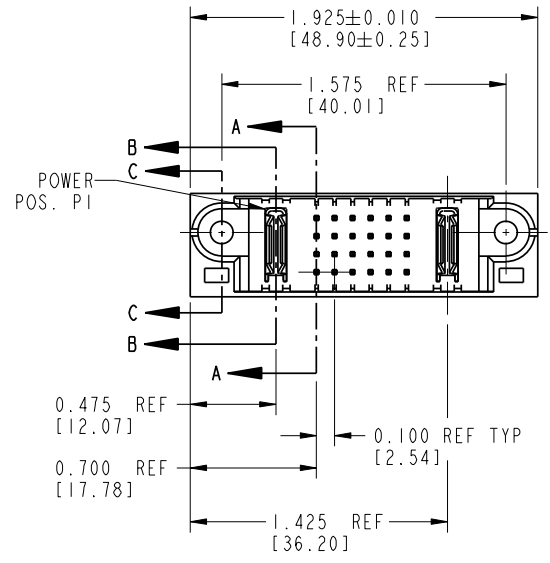
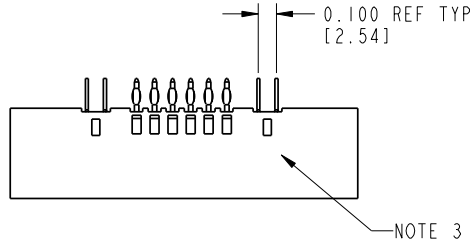


Tous droits strictement reserves. Reproduction ou communication a des tiers interdite sous quelque forme que ce soit sans autorisation écrite du propriétaire. Propriete de c FCI. Droits de reproduction FCI.

All rights strictly reserved. Reproduction or issue to third parties in any form whatever is not permitted without written authority from the proprietor. Property of FCI. Copyright FCI.

| | | | | | | | | | | | |
|-----------------------|------------------|-------|--------|---|---|---|---|---|-------|----|----|
| PRODUCT No. | ROWS | POWER | SIGNAL | | | | | | POWER | | |
| | | E1 | P1 | 1 | 2 | 3 | 4 | 5 | 6 | P2 | E2 |
| 51952-002-- NOTE 2 | D C B A | | | | | | | | | | |



| CODE | DIM "M" ±.010 [0.25] | CONTACT TYPE |
|------|-------------------------|--------------|
| G | 0.270 [6.86] | SIGNAL |
| K | 0.220 [5.59] | SIGNAL |
| PC | N/A [N/A] | POWER |

| | | | | | | | | | |
|-------------|-----------|------|----------|------------|---------------------------------------|------------|----------|--|--|
| mat'l code | | | | SEE NOTE 1 | tolerances unless otherwise specified | | CUSTOMER | | |
| lir | ecn no. | dr | date | linear | .XX±.01/0.X±0.3 | COPY | | www.fciconnect.com title IP + 24S + IP PRESS FIT VERTICAL HEADER | |
| A | V12513 | DA1 | 10/31/01 | | .XXX±.005/0.XX±0.13 | projection | | | |
| B | V21104 | TAB | 10/01/02 | | .XXX±.002/0.XXX±0.051 | | | | |
| C | DG05-0472 | Ryan | 11/17/05 | angles | 0°±2° | INCH/MM | | product family PwrBlade code 213 | |
| | | | | dr | J. WITMER 9/19/01 | scale 1:1 | | size A | |
| | | | | enrg | J. ALLISON 9/19/01 | | | dwg no 51952-002 | |
| | | | | chr | J. ALLISON 9/19/01 | | | sheet 1 of 3 | |
| | | | | appd | J. ALLISON 9/19/01 | | | | |
| sheet index | revision | C | C | | | | | | |
| | sheet | 1 | 2 | | | | | | |

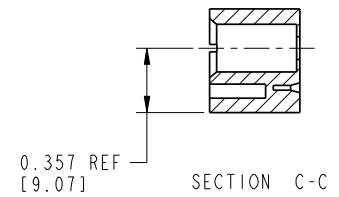
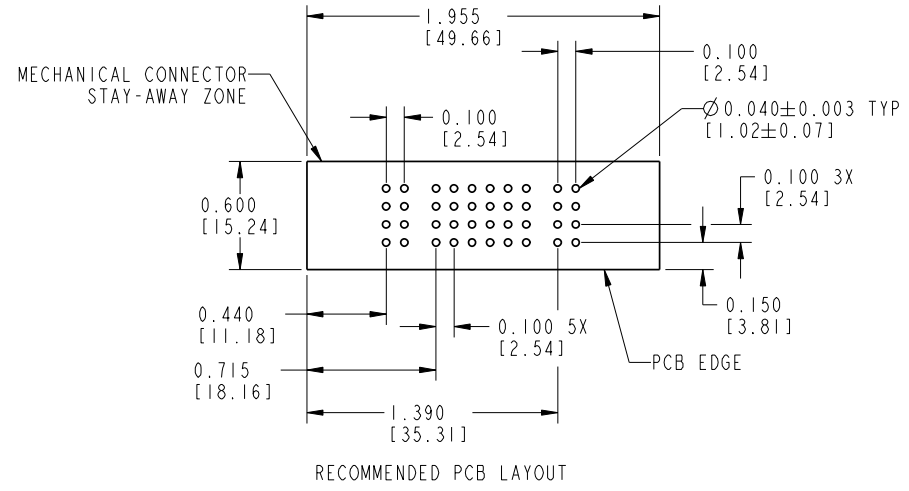
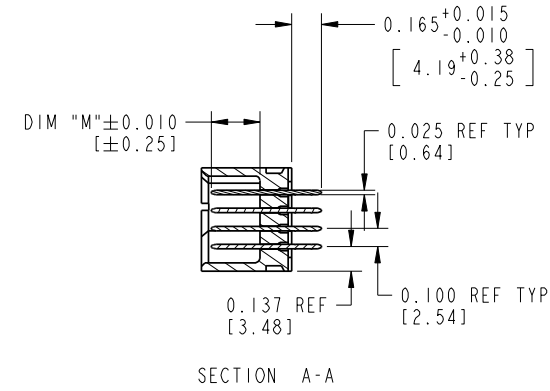
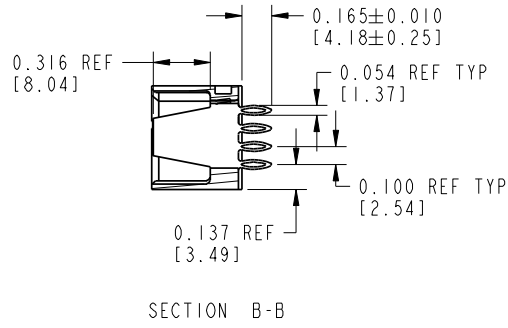
cage code 22526

Pro/E

Tous droits strictement réservés. Reproduction ou communication à des tiers interdite sans quelque forme que ce soit sans autorisation écrite du propriétaire. Propriété de c FCI. Droits de reproduction FCI.

All rights strictly reserved. Reproduction or issue to third parties in any form without written authority from the proprietor. Property of FCI. Copyright FCI.

PRODUCT NUMBER
51952-002--
NOTE 2



| | | | | | | | | | | | |
|-------------|---------|----------------|------|------------|---------------------------------------|-----------|------------|---------|---------------------------|----------------|------|
| mat'l code | | | | SEE NOTE 1 | tolerances unless otherwise specified | | CUSTOMER | | www.fciconnect.com | | |
| lir | ecn no. | dr | date | linear | .XX±.01/0.X±0.3 | | COPY | | title | | |
| c | | | | | .XXX±.005/0.XX±0.13 | | projection | | IP + 24S + IP | | |
| | | | | | .XXX±.002/0.XXX±0.051 | | | | PRESS FIT VERTICAL HEADER | | |
| | | | | | angles | 0°±2° | | INCH/MM | | product family | code |
| | | | | | dr | J. WITMER | 9/19/01 | scale | | PwrBlade | 213 |
| | | | | enrg | J. ALLISON | 9/19/01 | 1:1 | | size | sheet | |
| | | | | chr | J. ALLISON | 9/19/01 | | | dwg no | 2 of 3 | |
| | | | | appd | J. ALLISON | 9/19/01 | | | 51952-002 | | |
| sheet index | | revision sheet | | | | | | | | | |

cage code 22526

Tous droits strictement reserves. Reproduction ou communication a des tiers interdite sous quelque forme que ce soit sans autorisation écrite du propriétaire. Property of FCI. Droits de reproduction FCI.

A
FCI

All rights strictly reserved. Reproduction or issue to third parties in any form whatever is not permitted without written authority from the proprietor. Property of FCI. Copyright FCI.

A

B

| |
|------------------------|
| PRODUCT NUMBER |
| 51952-002_-- NOTE 2 |

CONNECTOR NOTES:

- HOUSING MATERIAL: UL 94 V-0 GLASS FILLED HIGH TEMP THERMOPLASTIC
POWER CONTACT MATERIAL: COPPER ALLOY
SIGNAL CONTACT MATERIAL: COPPER ALLOY
- PLATING:
51952-002: SIGNAL PIN: 30u"/0.76um Au OVER 50u"/1.27um Ni ON THE CONTACT AREA
AND 100u"/2.54um SnPb OVER 50u"/1.27um Ni ON THE TERMINATION AREA
POWER PIN: 30u"/0.76um Au OVER 50u"/1.27um Ni ON THE CONTACT AREA
AND 100u"/2.54um SnPb OVER 50u"/1.27um Ni ON THE TERMINATION AREA

51952-002LF: SIGNAL PIN: 30u"/0.76um Au OVER 50u"/1.27um Ni ON THE CONTACT AREA
AND 78u"/2.00um Sn OVER 50u"/1.27um Ni ON THE TERMINATION AREA
POWER PIN: 30u"/0.76um Au OVER 50u"/1.27um Ni ON THE CONTACT AREA
AND 78u"/2.00um Sn OVER 50u"/1.27um Ni ON THE TERMINATION AREA

PART NUMBER 51952-002LF MEETS EUROPEAN UNION DIRECTIVE AND OTHER COUNTRY REGULATIONS AS DECCRIBED IN GS-22-008.

THE HOUSING WILL WITHSTAND EXPOSURE TO 260° PEAK TEMPERATURE FOR 10 SECONDS IN A WAVE SOLDER APPLICATION WITH A CIRCUIT BOARD.
- "MANUFACTURER'S" NAME, P/N, AND DATE CODE TO APPEAR ON THIS SURFACE
- PRODUCT SPECIFICATION GS-12-149
- DIMENSIONS AND TOLERANCES ARE IN ACCORDANCE WITH ASME Y14.5M, 1994 UNLESS OTHERWISE SPECIFIED.

PCB NOTES:

- ALL DIMENSIONS ARE BASIC UNLESS OTHERWISE SPECIFIED.
- ALL THROUGH HOLES ARE LOCATED WITH A TRUE POSITION OF 0.004 [0.10]
- ALL HOLE DIAMETERS ARE FINISHED HOLE SIZE
- Ø0.098[2.41] THROUGH HOLES ARE UNPLATED.
- Ø0.0453±0.0010 [1.151±0.025] DRILLED HOLES PLATED WITH 0.0003 [0.008] MIN SnPb OVER 0.001 [0.03] TO 0.003 [0.08] Cu PLATING TO ACHIEVE A Ø0.040±0.003 [1.02±0.07] HOLE.
- FOR PRESS FIT APPLICATION USE FCI CAM TOOL 430169-004.

CONFIDENTIAL

| | | | | | | | | | | | |
|-------------|---------|----------------|------|---------------------------------------|-----------------------|----------|--|------------------------|--|---------------------------|--|
| mat'l code | | | | tolerances unless otherwise specified | | CUSTOMER | | A FCI | | www.fciconnect.com | |
| lfr | ecr no. | dr | date | linear | .XX±.01/0.X±0.3 | COPY | | projection | | title | |
| c | | | | | .XXX±.005/0.XX±0.13 | | | | | IP + 24S + 1P | |
| | | | | angles | .XXX±.002/0.XXX±0.051 | | | | | PRESS FIT VERTICAL HEADER | |
| | | | | dr | 0° ± 2° | | | INCH/MM | | product family | |
| | | | | enrg | J. WITMER 9/19/01 | | | scale | | PwrBlade | |
| | | | | chr | J. ALLISON 9/19/01 | | | 1:1 | | code | |
| | | | | appd | J. ALLISON 9/19/01 | | | A | | 213 | |
| sheet index | | revision sheet | | | | | | | | 3 of 3 | |

A

B

1 | 2

3 |

4

1 | 2

Pro/E

3 |

code code 22526

4