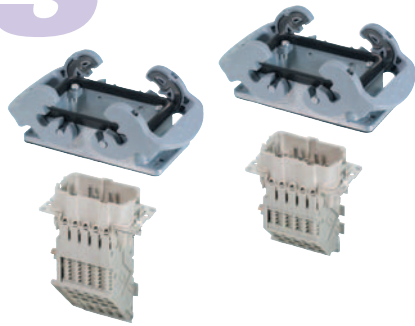
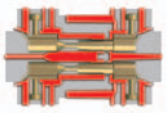


Sets with 2 components for the 690 / 400 V series with screw connection 500 V multipole adapter, single locking lever and base

revos BASIC



The multipole adapters of this series are compatible with the contact inserts of the 690/400 V series. The contact inserts can be found on page 1070. When a multipole adapter is used, the rated voltage of the connection is reduced to 500 V.

3 pole + 2 switching contacts + ground Size 10

Approvals:

6 pole + 2 switching contacts + ground Size 16

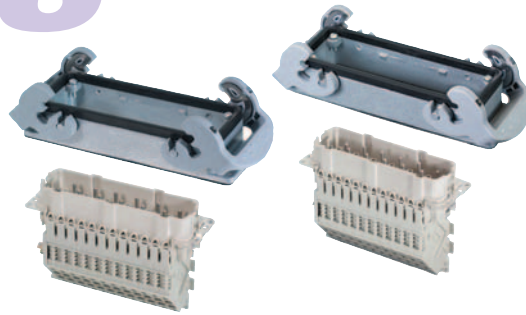
Approvals:

Description	Type	Part No.	Std. Pack	Type	Part No.	Std. Pack
revos BASIC multipole adapter with screw connection						
+ base with single locking lever						
Long design (6 marking fields)						
Male insert, ground right	BAS GAZSHRS 3 4,0 64	70.975.0353.3	10	BAS GAZSHRS 6 4,0 64	70.975.0653.3	10
Female insert, ground right	BAS GAZSHRB 3 4,0 64	70.965.0353.3	10	BAS GAZSHRB 6 4,0 64	70.965.0653.3	10
Male insert, ground left	BAS GAZSHLS 3 4,0 64	70.970.0353.3	10	BAS GAZSHLS 6 4,0 64	70.970.0653.3	10
Female insert, ground left	BAS GAZSHLB 3 4,0 64	70.960.0353.3	10	BAS GAZSHLB 6 4,0 64	70.960.0653.3	10
Short design (4 marking fields)						
Male insert, ground right	BAS GAZSNRS 3 4,0 64	70.975.0353.4	10	BAS GAZSNRS 6 4,0 64	70.975.0653.4	10
Female insert, ground right	BAS GAZSNRB 3 4,0 64	70.965.0353.4	10	BAS GAZSNRB 6 4,0 64	70.965.0653.4	10
Male insert, ground left	BAS GAZSNLS 3 4,0 64	70.970.0353.4	10	BAS GAZSNLS 6 4,0 64	70.970.0653.4	10
Female insert, ground left	BAS GAZSNLB 3 4,0 64	70.960.0353.4	10	BAS GAZSNLB 6 4,0 64	70.960.0653.4	10
Technical data						
Rated voltage	500 V			500 V		
Rated voltage according to UL/CSA	600 V			600 V		
Rated impulse voltage	6 kV			6 kV		
Rated current	16 A			16 A		
Degree of pollution	3			3		
Rated cross section						
EN 60999	0.5 – 2.5 mm ²			0.5 – 2.5 mm ²		
UL	20-12 AWG			20-12 AWG		
CSA	20-12 AWG			20-12 AWG		
Contacts						
Material	Copper alloy			Copper alloy		
Surface	Sn			Sn		
Insulation strip length	9 mm			9 mm		
Contact resistance	≤ 3 mΩ			≤ 3 mΩ		
Mating cycles	200			200		
Screws head design / recomm. torque						
Mounting screws	H1/0.5 – 0.7 Nm			H1/0.5 – 0.7 Nm		
Clamping screws	H1/0.5 – 0.7 Nm			H1/0.5 – 0.7 Nm		
Ground conductor screws	H2/1.2 – 1.6 Nm			H2/1.2 – 1.6 Nm		
Temperature range	-40 – +120 °C			-40 – +120 °C		
Dimensions						

X = shortened switching contacts

Sets with 2 components for the 690 / 400 V series with screw connection 500 V multipole adapter, single locking lever and base

revos



The multipole adapters of this series are compatible with the contact inserts of the 690/400 V series. The contact inserts can be found on page 1070. When a multipole adapter is used, the rated voltage of the connection is reduced to 500 V.

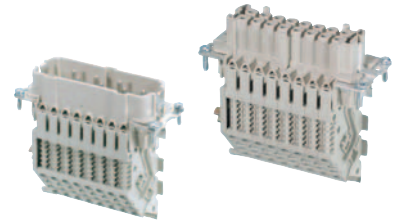
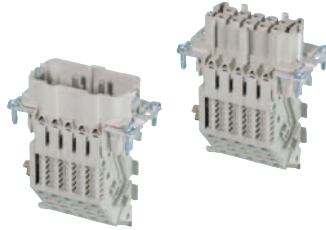
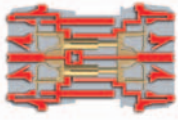
10 pole + 2 switching contacts + ground Size 24

Approvals:

Description	Type	Part No.	Std. Pack
revos BASIC multipole adapter with screw connection + base with single locking lever			
Long design (6 marking fields)			
Male insert, ground right	BAS GAZSHRS 10 4,0 64	70.975.1053.3	10
Female insert, ground right	BAS GAZSHRB 10 4,0 64	70.965.1053.3	10
Male insert, ground left	BAS GAZSHLS 10 4,0 64	70.970.1053.3	10
Female insert, ground left	BAS GAZSHLB 10 4,0 64	70.960.1053.3	10
Short design (4 marking fields)			
Male insert, ground right	BAS GAZSNRS 10 4,0 64	70.975.1053.4	10
Female insert, ground right	BAS GAZSNRB 10 4,0 64	70.965.1053.4	10
Male insert, ground left	BAS GAZSNLS 10 4,0 64	70.970.1053.4	10
Female insert, ground left	BAS GAZSNLB 10 4,0 64	70.960.1053.4	10
Technical data			
Rated voltage		500 V	
Rated voltage according to UL/CSA		600 V	
Rated impulse voltage		6 kV	
Rated current		16 A	
Degree of pollution		3	
Rated cross section			
EN 60999		0,5 – 2,5 mm ²	
UL		20-12 AWG	
CSA		20-12 AWG	
Contacts			
Material		Copper alloy	
Surface		Sn	
Insulation strip length		9 mm	
Contact resistance		≤ 3 mΩ	
Mating cycles		200	
Screws	head design / recomb. torque		
Mounting screws		H1/0.5 – 0.7 Nm	
Clamping screws		H1/0.5 – 0.7 Nm	
Ground conductor screws		H2/1.2 – 1.6 Nm	
Temperature range		-40 – +120 °C	
Dimensions			
	<p>X = shortened switching contacts</p>		

500 V multipole adapter with spring clamp connection of the 690 / 400 V series

revos BASIC



The multipole adapters of this series are compatible with the contact inserts of the 690/400 V series. The contact inserts can be found on page 1070. When a multipole adapter is used, the rated voltage of the connection is reduced to 500 V.

3 pole + 2 switching contacts + ground Size 10

Approvals:

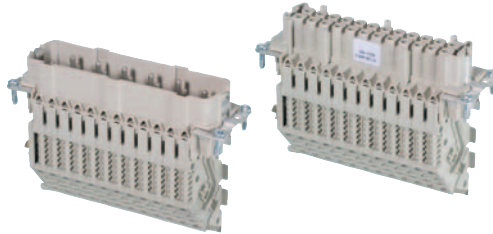
6 pole + 2 switching contacts + ground Size 16

Approvals:

Description	Type	Part No.	Std. Pack	Type	Part No.	Std. Pack	
revos BASIC multipole adapter with screw connection							
Short design (6 marking fields)							
Male insert, ground right	BAS SAF KR 3 2,5 64	70.136.0353.0	10	BAS SAF KR 6 2,5 64	70.136.0653.0	10	
Female insert, ground right	BAS BAF KR 3 2,5 64	70.126.0353.0	10	BAS BAF KR 6 2,5 64	70.126.0653.0	10	
Male insert, ground left	BAS SAF KL 3 2,5 64	70.131.0353.0	10	BAS SAF KL 6 2,5 64	70.131.0653.0	10	
Female insert, ground left	BAS BAF KL 3 2,5 64	70.121.0353.0	10	BAS BAF KL 6 2,5 64	70.121.0653.0	10	
Technical data							
Rated voltage	500 V			500 V			
Rated voltage according to UL/CSA	600 V			600 V			
Rated impulse voltage	6 kV			6 kV			
Rated current	16 A			16 A			
Degree of pollution	3			3			
Rated cross section							
EN 60999	0.5 – 2.5 mm ²			0.5 – 2.5 mm ²			
UL	20-12 AWG			20-12 AWG			
CSA	20-12 AWG			20-12 AWG			
Contacts							
Material	Copper alloy			Copper alloy			
Surface	Sn			Sn			
Insulation strip length	9 mm			9 mm			
Contact resistance	≤ 3 mΩ			≤ 3 mΩ			
Mating cycles	200			200			
Screws head design / recomb. torque							
Mounting screws	H1/0.5 – 0.7 Nm			H1/0.5 – 0.7 Nm			
Clamping screws	H1/0.5 – 0.7 Nm			H1/0.5 – 0.7 Nm			
Ground conductor screws	H2/1.2 – 1.6 Nm			H2/1.2 – 1.6 Nm			
Temperature range	-40 – +120 °C			-40 – +120 °C			
Dimensions							
Accessories							
Screwdriver	blade "A" 0.6×3.5	DIN 5264 A 0,6×3,5	06.502.4000.0	5	DIN 5264 A 0,6×3,5	06.502.4000.0	5
Housings for size 10 begin on page 1190				Housings for size 16 begin on page 1222			

500 V multipole adapter with spring clamp connection of the 690/400 V series

revos



The multipole adapters of this series are compatible with the contact inserts of series 690/400 V. The contact inserts can be found on page 1071. When a multipole adapter is used, the rated voltage of the connection is reduced to 500 V.

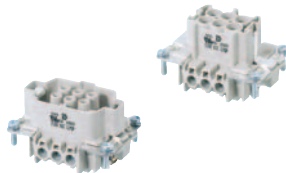
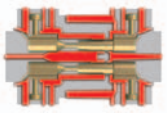
10 pole + 2 switching contacts + ground Size 24

Approvals:

Description	Type	Part No.	Std. Pack
revos BASIC multipole adapter with screw connection			
Long design (6 marking fields)			
Male insert, ground right	BAS SAF KR 10 2,5 64	70.136.1053.0	10
Female insert, ground right	BAS BAF KR 10 2,5 64	70.126.1053.0	10
Male insert, ground left	BAS SAF KL 10 2,5 64	70.131.1053.0	10
Female insert, ground left	BAS BAF KL 10 2,5 64	70.121.1053.0	10
Technical data			
Rated voltage		500 V	
Rated voltage according to UL/CSA		600 V	
Rated impulse voltage		6 kV	
Rated current		16 A	
Degree of pollution		3	
Rated cross section			
EN 60999		0,5 – 2,5 mm ²	
UL		20-12 AWG	
CSA		20-12 AWG	
Contacts			
Material		Copper alloy	
Surface		Sn	
Insulation strip length		9 mm	
Contact resistance		≤ 3 mΩ	
Mating cycles		200	
Screws head design / recomm. torque			
Mounting screws		H1/0.5 – 0.7 Nm	
Clamping screws		H1/0.5 – 0.7 Nm	
Ground conductor screws		H2/1.2 – 1.6 Nm	
Temperature range		-40 – +120 °C	
Dimensions			
Accessories			
Type			
Screwdriver	blade "A" 0,6x3,5	DIN 5264 A 0,6x3,5	06.502.4000.0
		Std. Pack	5
Housings for size 24 begin on page 1254			

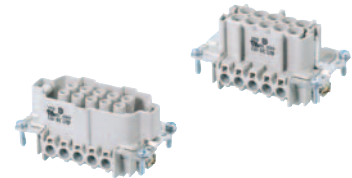
690 V contact inserts, screw connection with shrouded contacts and two switching contacts

revos BASIC



6 pole + ground Size 6

Approvals:



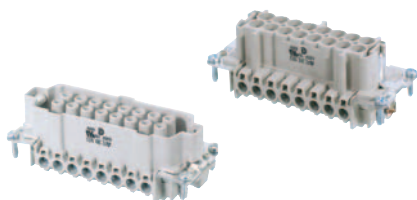
10 pole + ground Size 10

Approvals:

Description	Type	Part No.	Std. Pack	Type	Part No.	Std. Pack
revos BASIC contact inserts 690 V						
Male insert	BAS STS 6 2,5 69	72.310.0653.0	10	BAS STS 10 2,5 69	72.310.1053.0	10
Female insert	BAS BUS 6 2,5 69	72.300.0653.0	10	BAS BUS 10 2,5 69	72.300.1053.0	10
Derating curves						
See page 1343						
Technical data						
Rated voltage	690 V			690 V		
Rated voltage according to UL/CSA	600 V			600 V		
Rated impulse voltage	8 kV			8 kV		
Rated current	16 A			16 A		
Degree of pollution	3			3		
Rated cross section						
EN 60999	0.5 – 2.5 mm ²			0.5 – 2.5 mm ²		
UL	20-12 AWG			20-12 AWG		
CSA	20-12 AWG			20-12 AWG		
Contacts						
Material	Copper alloy			Copper alloy		
Surface	Sn			Sn		
Insulation strip length	7 mm			7 mm		
Contact resistance	≤ 1.5 mΩ			≤ 1.5 mΩ		
Mating cycles	200			200		
Screws head design / recomm. torque						
Mounting screws	H1/0.5 – 0.7 Nm			H1/0.5 – 0.7 Nm		
Clamping screws	H1/0.5 – 0.7 Nm			H1/0.5 – 0.7 Nm		
Ground conductor screws	H2/1.2 – 1.6 Nm			H2/1.2 – 1.6 Nm		
Temperature range						
-40 – +120 °C						
Dimensions						
X = shortened switching contacts						
Housings for size 6 begin on page 1166				Housings for size 10 begin on page 1188		

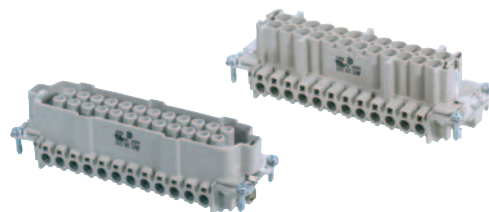
690 V contact inserts, screw connection with shrouded contacts and two switching contacts

revos



16 pole + ground Size 16

Approvals:



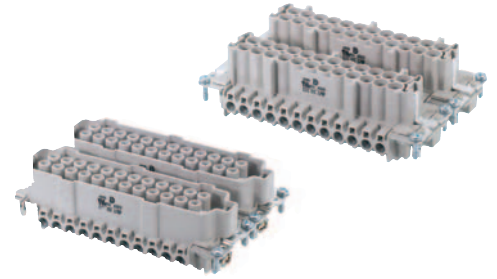
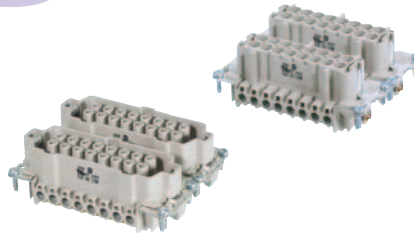
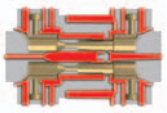
24 pole + ground Size 24

Approvals:

Description	Type	Part No.	Std. Pack	Type	Part No.	Std. Pack
revos BASIC contact inserts 690 V						
Male insert	BAS STS 16 2,5 69	72.310.1653.0	10	BAS STS 24 2,5 69	72.310.2453.0	10
Female insert	BAS BUS 16 2,5 69	72.300.1653.0	10	BAS BUS 24 2,5 69	72.300.2453.0	10
Derating curves						
See page 1343						
Technical data						
Rated voltage	690 V			690 V		
Rated voltage according to UL/CSA	600 V			600 V		
Rated impulse voltage	8 kV			8 kV		
Rated current	16 A			16 A		
Degree of pollution	3			3		
Rated cross section						
EN 60999	0.5 – 2.5 mm ²			0.5 – 2.5 mm ²		
UL	20-12 AWG			20-12 AWG		
CSA	20-12 AWG			20-12 AWG		
Contacts						
Material	Copper alloy			Copper alloy		
Surface	Sn			Sn		
Insulation strip length	7 mm			7 mm		
Contact resistance	≤ 1.5 mΩ			≤ 1.5 mΩ		
Mating cycles	200			200		
Screws head design / recomm. torque						
Mounting screws	H1/0.5 – 0.7 Nm			H1/0.5 – 0.7 Nm		
Clamping screws	H1/0.5 – 0.7 Nm			H1/0.5 – 0.7 Nm		
Ground conductor screws	H2/1.2 – 1.6 Nm			H2/1.2 – 1.6 Nm		
Temperature range	-40 – +120 °C			-40 – +120 °C		
Dimensions						
X = shortened switching contacts						
Housings for size 16 begin on page 1220				Housings for size 24 begin on page 1252		

690 V contact inserts, screw connection with shrouded contacts and two switching contacts

revos BASIC



32 pole + ground Size 32

Approvals:

48 pole + ground Size 48

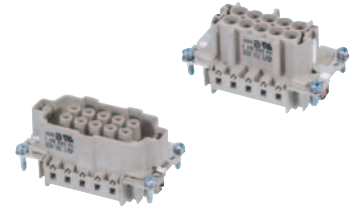
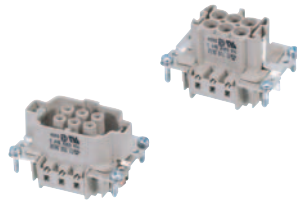
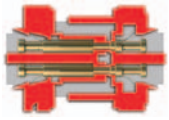
Approvals:

Description	Type	Part No.	Std. Pack	Type	Part No.	Std. Pack
revos BASIC contact inserts 690 V						
Male insert, marked 1-16	BAS STS 32 2,5 69	72.310.3253.0	5			
Male insert, marked 17-32						
Female insert, marked 1-16	BAS BUS 32 2,5 69	72.300.3253.0	5			
Female insert, marked 17-32						
Male insert, marked 1-24				BAS STS 48 2,5 69	72.310.4853.0	5
Male insert, marked 25-48						
Female insert, marked 1-24				BAS BUS 48 2,5 69	72.300.4853.0	5
Female insert, marked 25-48						
Derating curves See page 1343						
Technical data						
Rated voltage	690 V			690 V		
Rated voltage according to UL/CSA	600 V			600 V		
Rated impulse voltage	8 kV			8 kV		
Rated current	16 A			16 A		
Degree of pollution	3			3		
Rated cross section						
EN 60999	0.5 – 2.5 mm ²			0.5 – 2.5 mm ²		
UL	20-12 AWG			20-12 AWG		
CSA	20-12 AWG			20-12 AWG		
Contacts						
Material	Copper alloy			Copper alloy		
Surface	Sn			Sn		
Insulation strip length	7 mm			7 mm		
Contact resistance	≤ 1.5 mΩ			≤ 1.5 mΩ		
Mating cycles	200			200		
Screws head design / recomm. torque						
Mounting screws	H1/0.5 – 0.7 Nm			H1/0.5 – 0.7 Nm		
Clamping screws	H1/0.5 – 0.7 Nm			H1/0.5 – 0.7 Nm		
Ground conductor screws	H2/1.2 – 1.6 Nm			H2/1.2 – 1.6 Nm		
Temperature range	-40 – +120 °C			-40 – +120 °C		
Dimensions						
X = shortened switching contacts						
Housings for size 32 begin on page 1262			Housings for size 48 begin on page 1264			

revos

690 V contact inserts, crimp connection with shrouded contacts and two switching contacts

revos BASIC



6 pole + ground Size 6

Approvals:

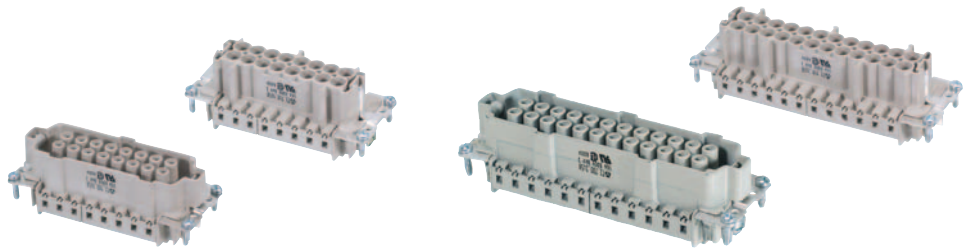
10 pole + ground Size 10

Approvals:

Description	Type	Part No.	Std. Pack	Type	Part No.	Std. Pack
Contact inserts for revos BASIC 690 V						
Male insert	BAS STC 6 69	72.710.0658.0	10	BAS STC 10 69	72.710.1058.0	10
Female insert	BAS BUC 6 69	72.700.0658.0	10	BAS BUC 10 69	72.700.1058.0	10
Contacts	See page 1089			See page 1089		
Derating curves	See page 1343			See page 1343		
Technical data						
Rated voltage	690 V			690 V		
Rated voltage according to UL/CSA	600 V			600 V		
Rated impulse voltage	8 kV			8 kV		
Rated current	16 A			16 A		
Degree of pollution	3			3		
Rated cross section						
EN 60999	0.5 – 4 mm ²			0.5 – 4 mm ²		
UL	20-12 AWG			20-12 AWG		
CSA	20-12 AWG			20-12 AWG		
Contacts						
Material	Copper alloy			Copper alloy		
Surface	Sn, Ag, Au			Sn, Ag, Au		
Insulation strip length	7 mm			7 mm		
Contact resistance	≤ 1.5 mΩ			≤ 1.5 mΩ		
Mating cycles	Sn 200/Ag, Au 500			Sn 200/Ag, Au 500		
Screws	head design / recomm. torque					
Mounting screws	H1/0.5 – 0.7 Nm			H1/0.5 – 0.7 Nm		
Clamping screws	-			-		
Ground conductor screws	H2/1.2 – 1.6 Nm			H2/1.2 – 1.6 Nm		
Temperature range	-40 – +120 °C			-40 – +120 °C		
Dimensions						
	X = shortened switching contacts					
Accessories						
Crimping tool	Type	Part No.	Std. Pack	Type	Part No.	Std. Pack
Crimping die "B"	"B"	05.502.2100.0	1	"B"	05.502.2100.0	1
Contact positioner "3"	Contact positioner 3	05.502.3300.0	1	Contact positioner 3	05.502.3300.0	1
Extraction tool		05.502.3500.0	1		05.502.3500.0	1
	Housings for size 6 begin on page 1166			Housings for size 10 begin on page 1188		

690 V contact inserts, crimp connection with shrouded contacts and two switching contacts

revos



16 pole + ground Size 16

Approvals:

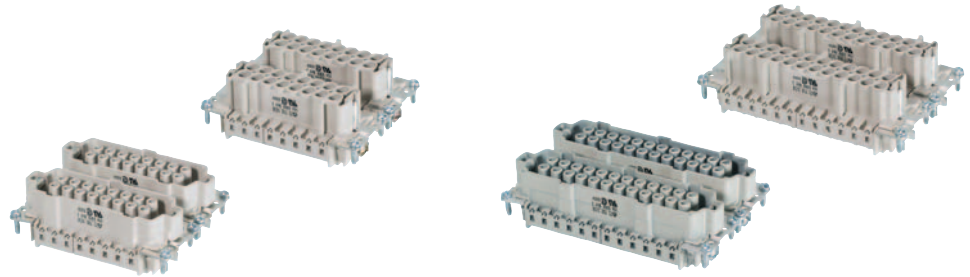
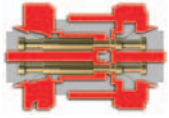
24 pole + ground Size 24

Approvals:

Description	Type	Part No.	Std. Pack	Type	Part No.	Std. Pack
Contact inserts for revos BASIC 690 V						
Male insert	BAS STC 16 69	72.710.1658.0	10	BAS STC 24 69	72.710.2458.0	10
Female insert	BAS BUC 16 69	72.700.1658.0	10	BAS BUC 24 69	72.700.2458.0	10
Contacts	See page 1089			See page 1089		
Derating curves	See page 1343			See page 1343		
Technical data						
Rated voltage	690 V			690 V		
Rated voltage according to UL/CSA	600 V			600 V		
Rated impulse voltage	8 kV			8 kV		
Rated current	16 A			16 A		
Degree of pollution	3			3		
Rated cross section						
EN 60999	0.5 – 4 mm ²			0.5 – 4 mm ²		
UL	20-12 AWG			20-12 AWG		
CSA	20-12 AWG			20-12 AWG		
Contacts						
Material	Copper alloy			Copper alloy		
Surface	Sn, Ag, Au			Sn, Ag, Au		
Insulation strip length	7 mm			7 mm		
Contact resistance	≤ 1.5 mΩ			≤ 1.5 mΩ		
Mating cycles	Sn 200/Ag, Au 500			Sn 200/Ag, Au 500		
Screws	head design / recomb. torque					
Mounting screws	H1/0.5 – 0.7 Nm			H1/0.5 – 0.7 Nm		
Clamping screws	-			-		
Ground conductor screws	H2/1.2 – 1.6 Nm			H2/1.2 – 1.6 Nm		
Temperature range	-40 – +120 °C			-40 – +120 °C		
Dimensions						
X = shortened switching contacts						
Accessories	Type	Part No.	Std. Pack	Type	Part No.	Std. Pack
Crimping tool		95.101.0800.0	1		95.101.0800.0	1
Crimping die "B"	"B"	05.502.2100.0	1	"B"	05.502.2100.0	1
Contact positioner "3"	Contact positioner 3	05.502.3300.0	1	Contact positioner 3	05.502.3300.0	1
Extraction tool		05.502.3500.0	1		05.502.3500.0	1
	Housings for size 16 begin on page 1220			Housings for size 24 begin on page 1252		

690 V contact inserts, crimp connection with shrouded contacts and two switching contacts

revos BASIC



32 pole + ground Size 32

Approvals:

48 pole + ground Size 48

Approvals:

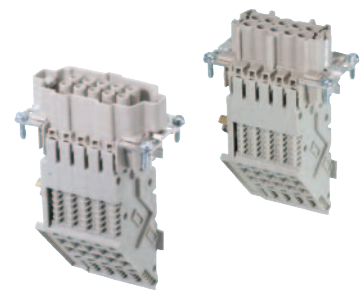
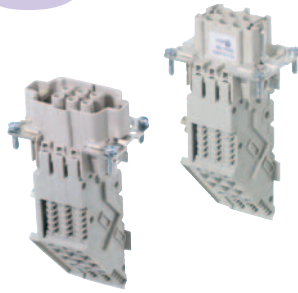
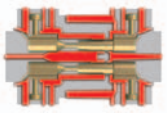
Description	Type	Part No.	Std. Pack	Type	Part No.	Std. Pack
Contact inserts for revos BASIC 690 V						
Male insert, marked 1-16	BAS STC 32 69	72.710.3258.0	5			
Male insert, marked 17-32						
Female insert, marked 1-16	BAS BUC 32 69	72.700.3258.0	5			
Female insert, marked 17-32						
Male insert, marked 1-24				BAS STC 48 69	72.710.4858.0	5
Male insert, marked 25-48						
Female insert, marked 1-24				BAS BUC 48 69	72.700.4858.0	5
Female insert, marked 25-48						
Contacts	See page 1089			See page 1089		
Derating curves	See page 1343			See page 1343		
Technical data						
Rated voltage	690 V			690 V		
Rated voltage according to UL/CSA	600 V			600 V		
Rated impulse voltage	8 kV			8 kV		
Rated current	16 A			16 A		
Degree of pollution	3			3		
Rated cross section						
EN 60999	0.5 – 4 mm ²			0.5 – 4 mm ²		
UL	20-12 AWG			20-12 AWG		
CSA	20-12 AWG			20-12 AWG		
Contacts						
Material	Copper alloy			Copper alloy		
Surface	Sn, Ag, Au			Sn, Ag, Au		
Insulation strip length	7 mm			7 mm		
Contact resistance	≤ 1.5 mΩ			≤ 1.5 mΩ		
Mating cycles	Sn 200/Ag, Au 500			Sn 200/Ag, Au 500		
Screws	head design / recomm. torque					
Mounting screws	H1/0.5 – 0.7 Nm			H1/0.5 – 0.7 Nm		
Clamping screws	-			-		
Ground conductor screws	H2/1.2 – 1.6 Nm			H2/1.2 – 1.6 Nm		
Temperature range	-40 – +120 °C			-40 – +120 °C		
Dimensions						
X = shortened switching contacts						
Accessories						
Crimping tool	Type	Part No.	Std. Pack	Type	Part No.	Std. Pack
Crimping die "B"	"B"	95.101.0800.0	1	"B"	95.101.0800.0	1
Contact positioner "3"	Contact positioner 3	05.502.3300.0	1	Contact positioner 3	05.502.3300.0	1
Extraction tool		05.502.3500.0	1		05.502.3500.0	1
Housings for size 32 begin on page 1262				Housings for size 48 begin on page 1264		

revos BASIC contacts suitable for contact inserts with crimp connection on pages 1086–1088

Description	Type	Part No.	Std. Pack
Contacts	mm ² / AWG		
Female contact	0.5 / 20	02.123.70xx.0	200
Female contact	0.75-1 / 18	02.123.71xx.0	200
Female contact	1.5 / 16	02.123.72xx.0	200
Female contact	2.5 / 14	02.123.73xx.0	200
Female contact	4 / 12	02.123.74xx.0	200
Male contact	0.5 / 20	05.543.70xx.0	200
Male contact	0.75-1 / 18	05.543.71xx.0	200
Male contact	1.5 / 16	05.543.72xx.0	200
Male contact	2.5 / 14	05.543.73xx.0	200
Male contact	4 / 12	05.543.74xx.0	200
Connector switching contacts (2 contacts required)	0.5 / 20	05.543.9021.0	200
Connector switching contacts (2 contacts required)	0.75-1 / 18	05.543.9121.0	200
Connector switching contacts (2 contacts required)	1.5 / 16	05.543.9221.0	200
Connector switching contacts (2 contacts required)	2.5 / 14	05.543.9321.0	200
Connector switching contacts (2 contacts required)	4 / 12	05.543.9421.0	200
Example:		Surfaces:	
Female contact, silver-plated, 1.5 mm ²		tin-plated xx = 21	
02.123.7202.0		silver-plated xx = 02	
		gold-plated xx = 01	
Technical data			
Material		Copper alloy	
Insulation strip length		7 mm	
Contact resistance		≤ 1.5 mΩ	
Mating cycles		Sn 200/Ag, Au 500	
Accessories	Type	Part No.	Std. Pack
Crimping tool		95.101.0800.0	1
Crimping die "B"	"B"	05.502.2100.0	1
Contact positioner "3"	Contact positioner 3	05.502.3300.0	1
Extraction tool		05.502.3500.0	1

500 V multipole adapter with screw connection for the 690 V series

revos BASIC



The multipole adapters of this series are compatible with the contact inserts of the 690 V series. The contact inserts can be found on pages 1082/1086. When a multipole adapter is used, the rated voltage of the connection is reduced to 500 V.

6 pole + ground Size 6

Approvals:

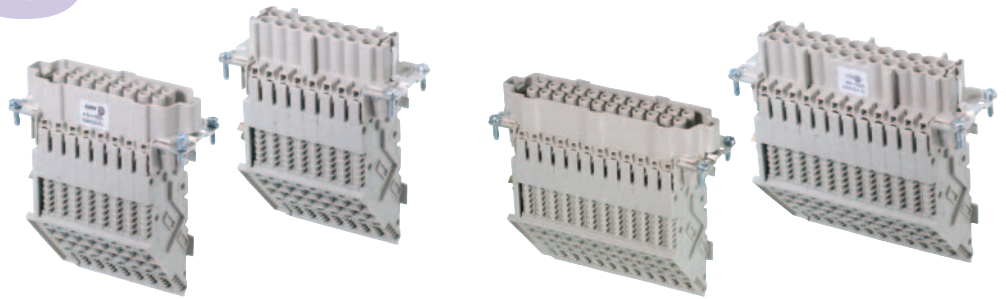
10 pole + ground Size 10

Approvals:

Description	Type	Part No.	Std. Pack	Type	Part No.	Std. Pack
revos BASIC multipole adapter with screw connection						
Long design (6 marking fields)						
Male insert, ground right	BAS SAS LR 6 4,0 69	72.115.0653.0	10	BAS SAS LR 10 4,0 69	72.115.1053.0	10
Female insert, ground right	BAS BAS LR 6 4,0 69	72.105.0653.0	10	BAS BAS LR 10 4,0 69	72.105.1053.0	10
Male insert, ground left	BAS SAS LL 6 4,0 69	72.110.0653.0	10	BAS SAS LL 10 4,0 69	72.110.1053.0	10
Female insert, ground left	BAS BAS LL 6 4,0 69	72.100.0653.0	10	BAS BAS LL 10 4,0 69	72.100.1053.0	10
Short design (4 marking fields)						
Male insert, ground right	BAS SAS KR 6 4,0 69	72.115.0653.4	10	BAS SAS KR 10 4,0 69	72.115.1053.4	10
Female insert, ground right	BAS BAS KR 6 4,0 69	72.105.0653.4	10	BAS BAS KR 10 4,0 69	72.105.1053.4	10
Male insert, ground left	BAS SAS KL 6 4,0 69	72.110.0653.4	10	BAS SAS KL 10 4,0 69	72.110.1053.4	10
Female insert, ground left	BAS BAS KL 6 4,0 69	72.100.0653.4	10	BAS BAS KL 10 4,0 69	72.100.1053.4	10
Technical data						
Rated voltage	500 V			500 V		
Rated voltage according to UL/CSA	600 V			600 V		
Rated impulse voltage	6 kV			6 kV		
Rated current	16 A			16 A		
Degree of pollution	3			3		
Rated cross section						
EN 60999	0.5 – 4 mm ²			0.5 – 4 mm ²		
UL	20-12 AWG			20-12 AWG		
CSA	20-12 AWG			20-12 AWG		
Contacts						
Material	Copper alloy			Copper alloy		
Surface	Sn			Sn		
Insulation strip length	12 mm			12 mm		
Contact resistance	≤ 3 mΩ			≤ 3 mΩ		
Mating cycles	200			200		
Screws head design / recomm. torque						
Mounting screws	H1/0.5 – 0.7 Nm			H1/0.5 – 0.7 Nm		
Clamping screws	M3/0.5 – 0.7 Nm			M3/0.5 – 0.7 Nm		
Ground conductor screws	H2/1.2 – 1.6 Nm			H2/1.2 – 1.6 Nm		
Temperature range	-40 – +120 °C			-40 – +120 °C		
Dimensions						
Housings for size 6 begin on page 1168				Housings for size 10 begin on page 1190		

500 V multipole adapter with screw connection for the 690 V series

revos



The multipole adapters of this series are compatible with the contact inserts of the 690 V series. The contact inserts can be found on pages 1083/1087. When a multipole adapter is used, the rated voltage of the connection is reduced to 500 V.

16 pole + ground Size 16

Approvals:

24 pole + ground Size 24

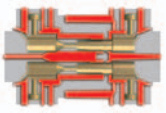
Approvals:

Description	Type	Part No.	Std. Pack	Type	Part No.	Std. Pack
revos BASIC multipole adapter with screw connection						
Long design (6 marking fields)						
Male insert, ground right	BAS SAS LR 16 4,0 69	72.115.1653.0	10	BAS SAS LR 24 4,0 69	72.115.2453.0	10
Female insert, ground right	BAS BAS LR 16 4,0 69	72.105.1653.0	10	BAS BAS LR 24 4,0 69	72.105.2453.0	10
Male insert, ground left	BAS SAS LL 16 4,0 69	72.110.1653.0	10	BAS SAS LL 24 4,0 69	72.110.2453.0	10
Female insert, ground left	BAS BAS LL 16 4,0 69	72.100.1653.0	10	BAS BAS LL 24 4,0 69	72.100.2453.0	10
Short design (4 marking fields)						
Male insert, ground right	BAS SAS KR 16 4,0 69	72.115.1653.4	10	BAS SAS KR 24 4,0 69	72.115.2453.4	10
Female insert, ground right	BAS BAS KR 16 4,0 69	72.105.1653.4	10	BAS BAS KR 24 4,0 69	72.105.2453.4	10
Male insert, ground left	BAS SAS KL 16 4,0 69	72.110.1653.4	10	BAS SAS KL 24 4,0 69	72.110.2453.4	10
Female insert, ground left	BAS BAS KL 16 4,0 69	72.100.1653.4	10	BAS BAS KL 24 4,0 69	72.100.2453.4	10
Technical data						
Rated voltage	500 V			500 V		
Rated voltage according to UL/CSA	600 V			600 V		
Rated impulse voltage	6 kV			6 kV		
Rated current	16 A			16 A		
Degree of pollution	3			3		
Rated cross section	0.5 – 4 mm ²			0.5 – 4 mm ²		
EN 60999	0.5 – 4 mm ²			0.5 – 4 mm ²		
UL	20-12 AWG			20-12 AWG		
CSA	20-12 AWG			20-12 AWG		
Contacts						
Material	Copper alloy			Copper alloy		
Surface	Sn			Sn		
Insulation strip length	12 mm			12 mm		
Contact resistance	≤ 3 mΩ			≤ 3 mΩ		
Mating cycles	200			200		
Screws head design / recomb. torque						
Mounting screws	H1/0.5 – 0.7 Nm			H1/0.5 – 0.7 Nm		
Clamping screws	M3/0.5 – 0.7 Nm			M3/0.5 – 0.7 Nm		
Ground conductor screws	H2/1.2 – 1.6 Nm			H2/1.2 – 1.6 Nm		
Temperature range	-40 – +120 °C			-40 – +120 °C		
Dimensions						
Housings for size 16 begin on page 1222				Housings for size 24 begin on page 1254		

500 V sets of 2 components for the 690 V series with screw connection

Multipole adapter, single locking lever and base

revos BASIC



These multipole adapters can be mounted inside the control cabinet. Please use the version B coding accessory. Coding accessories can be found on page 1310-1313.

6 pole + ground Size 6

Approvals:    

10 pole + ground Size 10

Approvals:    

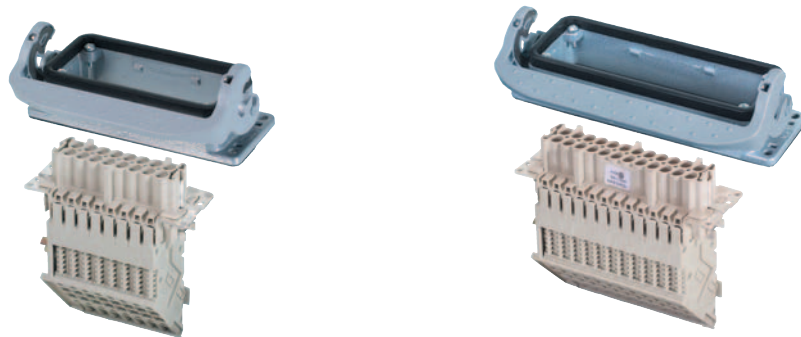
Description	Type	Part No.	Std. Pack	Type	Part No.	Std. Pack
revos BASIC multipole adapter with screw connection + base with single locking lever						
Long design (6 marking fields)						
Male insert, ground right	BAS GAESHRS 6 4,0 69	72.955.0653.0	10	BAS GAESHRS 10 4,0 69	77.955.1053.0	10
Female insert, ground right	BAS GAESH RB 6 4,0 69	72.945.0653.0	10	BAS GAESH RB 10 4,0 69	77.945.1053.0	10
Male insert, ground left	BAS GAESHLS 6 4,0 69	72.950.0653.0	10	BAS GAESHLS 10 4,0 69	77.950.1053.0	10
Female insert, ground left	BAS GAESH LB 6 4,0 69	72.940.0653.0	10	BAS GAESH LB 10 4,0 69	77.940.1053.0	10
Technical data						
Rated voltage		500 V			500 V	
Rated voltage according to UL/CSA		600 V			600 V	
Rated impulse voltage		6 kV			6 kV	
Rated current		16 A			16 A	
Degree of pollution		3			3	
Rated cross section						
EN 60999		0.5 – 4 mm ²			0.5 – 4 mm ²	
UL		20-12 AWG			20-12 AWG	
CSA		20-12 AWG			20-12 AWG	
Contacts						
Material		Copper alloy			Copper alloy	
Surface		Sn			Sn	
Insulation strip length		12 mm			12 mm	
Contact resistance		≤ 3 mΩ			≤ 3 mΩ	
Mating cycles		200			200	
Screws	head design / recomm. torque					
Mounting screws		H1/0.5 – 0.7 Nm			H1/0.5 – 0.7 Nm	
Clamping screws		M3/0.5 – 0.7 Nm			M3/0.5 – 0.7 Nm	
Ground conductor screws		H2/1.2 – 1.6 Nm			H2/1.2 – 1.6 Nm	
Temperature range		-40 – +120 °C			-40 – +120 °C	
Dimensions						

X = shortened switching contacts

500 V sets of 2 components for the 690 V series with screw connection

Multipole adapter, single locking lever and base

revos



These multipole adapters can be mounted inside the control cabinet. Please use the version B coding accessory. Coding accessories can be found on page 1310-1313.

16 pole + ground Size 16

Approvals:

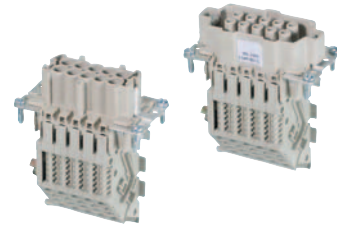
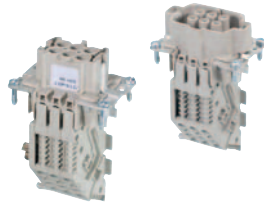
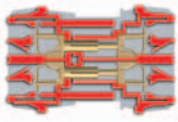
24 pole + ground Size 24

Approvals:

Description	Type	Part No.	Std. Pack	Type	Part No.	Std. Pack		
revos BASIC multipole adapter with screw connection + base with single locking lever								
Long design (6 marking fields)	BAS GAESHRS	16 4,0 69	77.955.1653.0	10	BAS GAESHRS	24 4,0 69	77.955.2453.0	10
Male insert, ground right	BAS GAESHRB	16 4,0 69	77.945.1653.0	10	BAS GAESHRB	24 4,0 69	77.945.2453.0	10
Female insert, ground right	BAS GAESHLS	16 4,0 69	77.950.1653.0	10	BAS GAESHLS	24 4,0 69	77.950.2453.0	10
Male insert, ground left	BAS GAESHLB	16 4,0 69	77.940.1653.0	10	BAS GAESHLB	24 4,0 69	77.940.2453.0	10
Female insert, ground left								
Technical data								
Rated voltage			500 V			500 V		
Rated voltage according to UL/CSA			600 V			600 V		
Rated impulse voltage			6 kV			6 kV		
Rated current			16 A			16 A		
Degree of pollution			3			3		
Rated cross section								
EN 60999			0.5 – 4 mm ²			0.5 – 4 mm ²		
UL			20-12 AWG			20-12 AWG		
CSA			20-12 AWG			20-12 AWG		
Contacts								
Material			Copper alloy			Copper alloy		
Surface			Sn			Sn		
Insulation strip length			12 mm			12 mm		
Contact resistance			≤ 3 mΩ			≤ 3 mΩ		
Mating cycles			200			200		
Screws	head design / recomb. torque							
Mounting screws			H1/0.5 – 0.7 Nm			H1/0.5 – 0.7 Nm		
Clamping screws			M3/0.5 – 0.7 Nm			M3/0.5 – 0.7 Nm		
Ground conductor screws			H2/1.2 – 1.6 Nm			H2/1.2 – 1.6 Nm		
Temperature range			-40 – +120 °C			-40 – +120 °C		
Dimensions								
	X = shortened switching contacts							

500 V multipole adapter with spring clamp connection for the 690 V series

revos BASIC



The multipole adapters of this series are compatible with the contact inserts of the 690 V series. The contact inserts can be found on pages 1082/1086. When a multipole adapter is used, the rated voltage of the connection is reduced to 500 V.

6 pole + ground Size 6

Approvals:

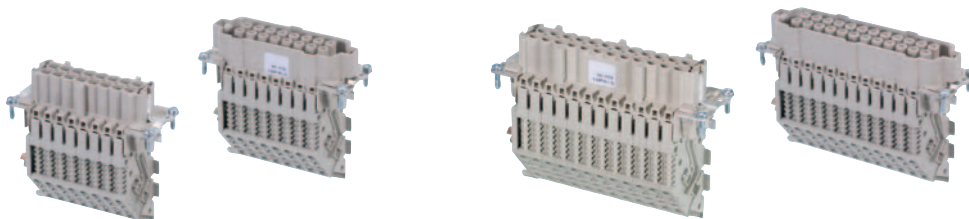
10 pole + ground Size 10

Approvals:

Description	Type	Part No.	Std. Pack	Type	Part No.	Std. Pack	
revos BASIC multipole adapter with screw connection							
Short design (6 marking fields)							
Male insert, ground right	BAS SAF KR 6 2,5 69	72.116.0653.0	10	BAS SAF KR 10 2,5 69	72.116.1053.0	10	
Female insert, ground right	BAS BAF KR 6 2,5 69	72.106.0653.0	10	BAS BAF KR 10 2,5 69	72.106.1053.0	10	
Male insert, ground left	BAS SAF KL 6 2,5 69	72.111.0653.0	10	BAS SAF KL 10 2,5 69	72.111.1053.0	10	
Female insert, ground left	BAS BAF KL 6 2,5 69	72.101.0653.0	10	BAS BAF KL 10 2,5 69	72.101.1053.0	10	
Technical data							
Rated voltage	500 V			500 V			
Rated voltage according to UL/CSA	600 V			600 V			
Rated impulse voltage	6 kV			6 kV			
Rated current	16 A			16 A			
Degree of pollution	3			3			
Rated cross section	0.5 – 2.5 mm ²			0.5 – 2.5 mm ²			
EN 60999	0.5 – 2.5 mm ²			0.5 – 2.5 mm ²			
UL	20-12 AWG			20-12 AWG			
CSA	20-12 AWG			20-12 AWG			
Contacts							
Material	Copper alloy			Copper alloy			
Surface	Sn			Sn			
Insulation strip length	9 mm			9 mm			
Contact resistance	≤ 3 mΩ			≤ 3 mΩ			
Mating cycles	200			200			
Screws head design / recomm. torque							
Mounting screws	H1/0.5 – 0.7 Nm			H1/0.5 – 0.7 Nm			
Clamping screws	-			-			
Ground conductor screws	H2/1.2 – 1.6 Nm			H2/1.2 – 1.6 Nm			
Temperature range	-40 – +120 °C			-40 – +120 °C			
Dimensions							
Accessories							
Screwdriver	blade "A" 0.6 x 3.5	DIN 5264 A 0,6 x 3,5	06.502.4000.0	5	DIN 5264 A 0,6 x 3,5	06.502.4000.0	5
Housings for size 6 begin on page 1168				Housings for size 10 begin on page 1190			

500 V multipole adapter with spring clamp connection for the 690 V series

revos



The multipole adapters of this series are compatible with the contact inserts of the 690 V series. The contact inserts can be found on pages 1083/1087. When a multipole adapter is used, the rated voltage of the connection is reduced to 500 V.

16 pole + ground Size 16

Approvals:

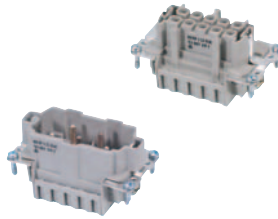
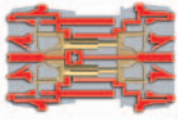
24 pole + ground Size 24

Approvals:

Description	Type	Part No.	Std. Pack	Type	Part No.	Std. Pack	
revos BASIC multipole adapter with screw connection							
Short design (6 marking fields)							
Male insert, ground right	BAS SAF KR 16 2,5 69	72.116.1653.0	10	BAS SAF KR 24 2,5 69	72.116.2453.0	10	
Female insert, ground right	BAS BAF KR 16 2,5 69	72.106.1653.0	10	BAS BAF KR 24 2,5 69	72.106.2453.0	10	
Male insert, ground left	BAS SAF KL 16 2,5 69	72.111.1653.0	10	BAS SAF KL 24 2,5 69	72.111.2453.0	10	
Female insert, ground left	BAS BAF KL 16 2,5 69	72.101.1653.0	10	BAS BAF KL 24 2,5 69	72.101.2453.0	10	
Technical data							
Rated voltage	500 V			500 V			
Rated voltage according to UL/CSA	600 V			600 V			
Rated impulse voltage	6 kV			6 kV			
Rated current	16 A			16 A			
Degree of pollution	3			3			
Rated cross section							
EN 60999	0,5 – 2,5 mm ²			0,5 – 2,5 mm ²			
UL	20-12 AWG			20-12 AWG			
CSA	20-12 AWG			20-12 AWG			
Contacts							
Material	Copper alloy			Copper alloy			
Surface	Sn			Sn			
Insulation strip length	9 mm			9 mm			
Contact resistance	≤ 3 mΩ			≤ 3 mΩ			
Mating cycles	200			200			
Screws	head design / recomb. torque						
Mounting screws	H1/0,5 – 0,7 Nm			H1/0,5 – 0,7 Nm			
Clamping screws	-			-			
Ground conductor screws	H2/1,2 – 1,6 Nm			H2/1,2 – 1,6 Nm			
	-40 – +120 °C			-40 – +120 °C			
Dimensions							
Accessories							
Screwdriver	blade "A" 0,6 x 3,5	DIN 5264 A 0,6 x 3,5	06.502.4000.0	5	DIN 5264 A 0,6 x 3,5	06.502.4000.0	5
Housings for size 16 begin on page 1222				Housings for size 24 begin on page 1254			

830 V contact inserts, spring clamp connection

revos BASIC



3 pole + 2 switching contacts + ground Size 10

Approvals:

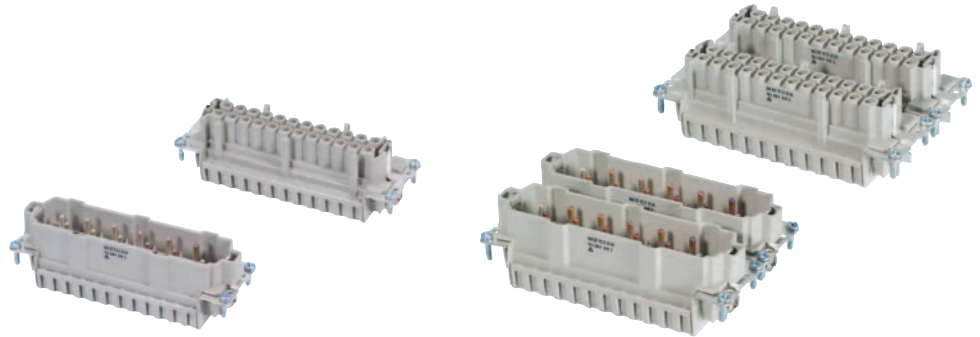
6 pole + 2 switching contacts + ground Size 16

Approvals:

Description	Type	Part No.	Std. Pack	Type	Part No.	Std. Pack	
Contact inserts for revos BASIC 830 V							
Male insert	BAS STF 3 2,5 83 AG	70.516.0353.0	10	BAS STF 6 2,5 83 AG	70.516.0653.0	10	
Female insert	BAS BUF 3 2,5 83 AG	70.506.0353.0	10	BAS BUF 6 2,5 83 AG	70.506.0653.0	10	
Derating curves	See page 1343			See page 1343			
Technical data							
Rated voltage	830 V			830 V			
Rated impulse voltage	8 kV			8 kV			
Rated current	16 A			16 A			
Degree of pollution	3			3			
Rated cross section	0.14 – 2.5 mm ²			0.14 – 2.5 mm ²			
Contacts	Copper alloy			Copper alloy			
Material	Copper alloy			Copper alloy			
Surface	Ag			Ag			
Insulation strip length	7 mm			7 mm			
Contact resistance	≤ 3 mΩ			≤ 3 mΩ			
Mating cycles	500			500			
Screws	head design / recomm. torque			head design / recomm. torque			
Mounting screws	H1/0.5 – 0.7 Nm			H1/0.5 – 0.7 Nm			
Clamping screws	-			-			
Ground conductor screws	H2/1.2 – 1.6 Nm			H2/1.2 – 1.6 Nm			
Temperature range	-40 – +120 °C			-40 – +120 °C			
Dimensions							
X = shortened switching contacts							
Accessories	Type	Part No.	Std. Pack	Type	Part No.	Std. Pack	
Screwdriver	blade "A" 0.6 x 3.5	DIN 5264 A 0,6 x 3,5	06.502.4000.0	5	DIN 5264 A 0,6 x 3,5	06.502.4000.0	5
Housings for size 10 begin on page 1188				Housings for size 16 begin on page 1220			

830 V contact inserts, spring clamp connection

revos



10 pole + 2 switching contacts + ground Size 24

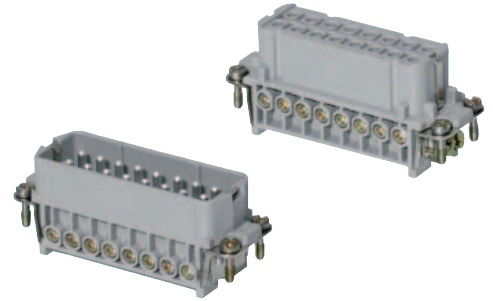
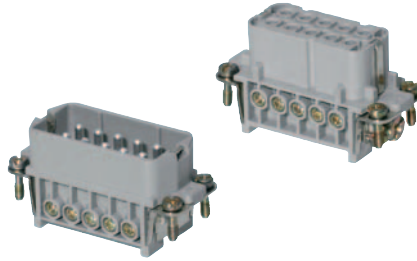
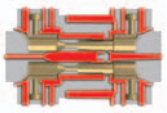
Approvals:

20 pole + 2 switching contacts + ground Size 48

Description	Type	Part No.	Std. Pack	Type	Part No.	Std. Pack	
Contact inserts for revos BASIC 830 V							
Male insert	BAS STF 10 2,5 83 AG	70.516.1053.0	10	BAS STF 20 2,5 83 AG	70.516.2053.0	10	
Female insert	BAS BUF 10 2,5 83 AG	70.506.1053.0	10	BAS BUF 20 2,5 83 AG	70.506.2053.0	10	
Derating curves							
See page 1343			See page 1343				
Technical data							
Rated voltage	830 V			830 V			
Rated impulse voltage	8 kV			8 kV			
Rated current	16 A			16 A			
Degree of pollution	3			3			
Rated cross section	0.14 – 2.5 mm ²			0.14 – 2.5 mm ²			
EN 60999							
Contacts							
Material	Copper alloy			Copper alloy			
Surface	Ag			Ag			
Insulation strip length	7 mm			7 mm			
Contact resistance	≤ 3 mΩ			≤ 3 mΩ			
Mating cycles	500			500			
Screws head design / recomb. torque							
Mounting screws	H1/0.5 – 0.7 Nm			H1/0.5 – 0.7 Nm			
Clamping screws	–			–			
Ground conductor screws	H2/1.2 – 1.6 Nm			H2/1.2 – 1.6 Nm			
Temperature range	-40 – +120 °C			-40 – +120 °C			
Dimensions							
X = shortened switching contacts							
Accessories							
Screwdriver	blade "A" 0,6 x 3,5	DIN 5264 A 0,6 x 3,5	06.502.4000.0	5	DIN 5264 A 0,6 x 3,5	06.502.4000.0	5
Housings for size 24 begin on page 1252				Housings for size 48 begin on page 1264			

250 V contact inserts, screw connection

revos HD



10 pole + ground Size 10/15

Approvals:

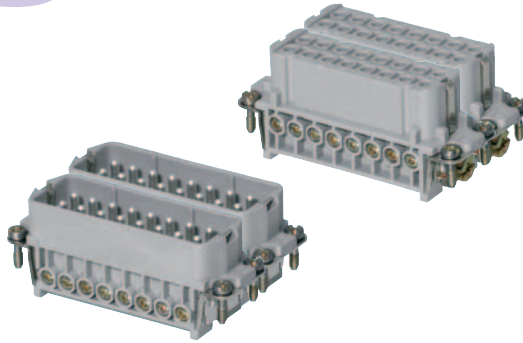
16 pole + ground Size 16/25, 32/50

Approvals:

Description	Type	Part No.	Std. Pack	Type	Part No.	Std. Pack
Contact inserts for revos HD						
Male insert	HD STS 10 2,5 25 AG	73.310.1053.0	10	HD STS 16 2,5 25 AG	73.310.1653.0	10
Female insert	HD BUS 10 2,5 25 AG	73.300.1053.0	10	HD BUS 16 2,5 25 AG	73.300.1653.0	10
Male insert, marked 17-32				HD STS SB16 2,5 25 AG	73.310.1653.3	10
Female insert, marked 17-32				HD BUS SB16 2,5 25 AG	73.300.1653.3	10
Derating curves	See page 1345			See page 1345		
Technical data						
Rated voltage	250 V			250 V		
Rated voltage according to UL/CSA	600 V			600 V		
Rated impulse voltage	4 kV			4 kV		
Rated current	VDE 16 A / CSA 16 A / UL 14 A			VDE 16 A / CSA 16 A / UL 14 A		
Degree of pollution	3			3		
Rated cross section	*e 0.5 – 1.5 mm ² / **f 0.75 – 2.5 mm ²			*e 0.5 – 1.5 mm ² / **f 0.75 – 2.5 mm ²		
EN 60999	20-14 AWG			20-14 AWG		
UL	20-14 AWG			20-14 AWG		
CSA	20-14 AWG			20-14 AWG		
Contacts						
Material	Copper alloy			Copper alloy		
Surface	Ag			Ag		
Insulation strip length	7 mm			7 mm		
Contact resistance	≤ 4 mΩ			≤ 4 mΩ		
Mating cycles	100			100		
Screws head design / recomm. torque						
Mounting screws	Z1/0.5 Nm			Z1/0.5 Nm		
Clamping screws	Z1/0.5 Nm			Z1/0.5 Nm		
Ground conductor screws	Z2/1.2 Nm			Z2/1.2 Nm		
Temperature range	-40 – +120 °C			-40 – +120 °C		
Dimensions						
* solid						
** fine-stranded						
	Housings for size 10/15 begin on page 1270			Housings for size 16/25, 32/50 begin on page 1274		

250 V contact inserts, screw connection

revos



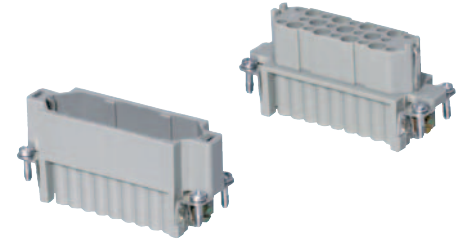
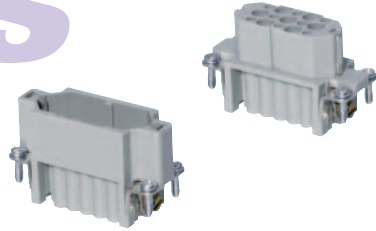
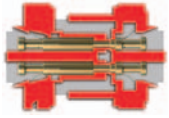
32 pole + ground Size 32/50

Approvals:

Description	Type	Part No.	Std. Pack
Contact inserts for revos^{HD}			
Male insert, marked 1-16	HD STS 32 2,5 25 AG	73.310.3253.0	5
Male insert, marked 17-32			
Female insert, marked 1-16	HD BUS 32 2,5 25 AG	73.300.3253.0	5
Female insert, marked 17-32			
Technical data			
Rated voltage		250 V	
Rated voltage according to UL/CSA		600 V	
Rated impulse voltage		4 kV	
Rated current		VDE 16 A / CSA 16 A / UL 14 A	
Degree of pollution		3	
Rated cross section			
EN 60999		*e 0.5 – 1.5 mm ² / **f 0.75 – 2.5 mm ²	
UL		20-14 AWG	
CSA		20-14 AWG	
Contacts			
Material		Copper alloy	
Surface		Ag	
Insulation strip length		7 mm	
Contact resistance		≤ 4 mΩ	
Mating cycles		100	
Screws head design / recomb. torque			
Mounting screws		Z1/0.5 Nm	
Clamping screws		Z1/0.5 Nm	
Ground conductor screws		Z2/1.2 Nm	
Temperature range		-40 – +120 °C	
Dimensions			
* solid			
** fine-stranded			
Housings for size 32/50 begin on page 1278			

250 V contact inserts, crimp connection

revos^{HD}



15 pole + ground Size 10/15

Approvals:

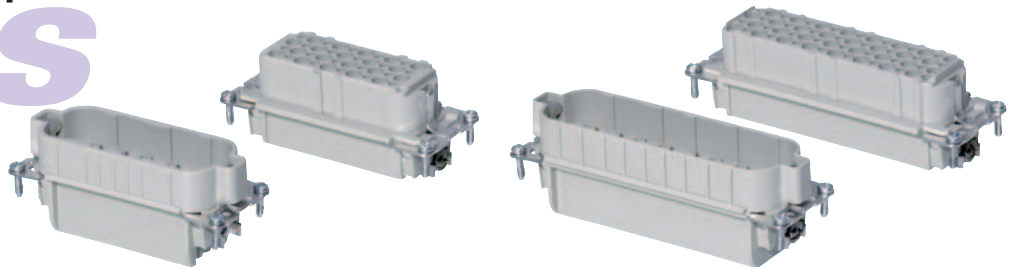
25 pole + ground Size 16/25, 32/50

Approvals:

Description	Type	Part No.	Std. Pack	Type	Part No.	Std. Pack	
Contact inserts for revos^{HD}							
Male insert	HD STC 15 25	73.710.1553.0	10	HD STC 25 25	73.710.2553.0	10	
Female insert	HD BUC 15 25	73.700.1553.0	10	HD BUC 25 25	73.700.2553.0	10	
Contacts	See page 1105			See page 1105			
Derating curves	See page 1345			See page 1345			
Technical data							
Rated voltage	250 V			250 V			
Rated voltage according to UL/CSA	600 V			600 V			
Rated impulse voltage	4 kV			4 kV			
Rated current	10 A			10 A			
Degree of pollution	3			3			
Rated cross section							
EN 60999	0.2 – 1.5 mm ²			0.2 – 1.5 mm ²			
UL	24-16 AWG			24-16 AWG			
CSA	24-16 AWG			24-16 AWG			
Contacts							
Material							
Surface	Au, Sn			Au, Sn			
Insulation strip length	4 mm			4 mm			
Contact resistance	≤ 4 mΩ			≤ 4 mΩ			
Mating cycles	Au 500 / Sn 50			Au 500 / Sn 50			
Screws	head design / recomm. torque						
Mounting screws	H1/0.5 – 0.7 Nm			H1/0.5 – 0.7 Nm			
Clamping screws	-			-			
Ground conductor screws	M3.5/0.8 – 1.0 Nm			M3.5/0.8 – 1.0 Nm			
Temperature range	-40 – +120 °C			-40 – +120 °C			
Dimensions							
Accessories							
Crimping tool	Type	Part No.	Std. Pack	Type	Part No.	Std. Pack	
Crimping die "E"	"E"	95.101.0800.0	1	"E"	95.101.0800.0	1	
Contact positioner "2"	Contact positioner 2	05.502.2400.0	1	Contact positioner 2	05.502.2400.0	1	
Extraction tool		05.502.0000.0	1		05.502.0000.0	1	
Housings for size 10/15 begin on page 1270				Housings for size 16/25, 32/50 begin on page 1274			

250 V contact inserts, crimp connection

revos



40 pole + ground Size 16

Approvals:

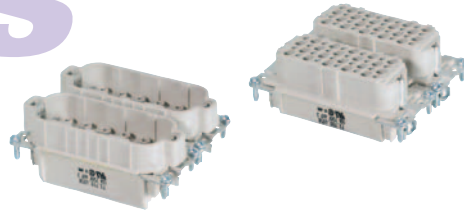
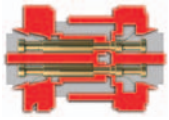
64 pole + ground Size 24

Approvals:

Description	Type	Part No.	Std. Pack	Type	Part No.	Std. Pack
Contact inserts for revos HD						
Male insert	HD STC 40 25	73.710.4058.0	10	HD STC 64 25	73.710.6458.0	10
Female insert	HD BUC 40 25	73.700.4058.0	10	HD BUC 64 25	73.700.6458.0	10
Contacts	See page 1105			See page 1105		
Technical data						
Rated voltage	250 V			250 V		
Rated voltage according to UL/CSA	600 V			600 V		
Rated impulse voltage	4 kV			4 kV		
Rated current	10 A			10 A		
Degree of pollution	3			3		
Rated cross section						
EN 60999	0.2 – 1.5 mm ²			0.2 – 1.5 mm ²		
UL	24-16 AWG			24 – 16 AWG		
CSA	24-16 AWG			24 – 16 AWG		
Contacts						
Material						
Surface	Au, Sn			Au, Sn		
Insulation strip length	4 mm			4 mm		
Contact resistance	≤ 4 mΩ			≤ 4 mΩ		
Mating cycles	Au 500/ Sn 50			Au 500/ Sn 50		
Screws head design / recomb. torque						
Mounting screws	H1/0.5 – 0.7 Nm			H1/0.5 – 0.7 Nm		
Clamping screws	-			-		
Ground conductor screws	M3,5/0.8 – 1.0 Nm			M3,5/0.8 – 1.0 Nm		
Temperature range	-40 – +120 °C			-40 – +120 °C		
Dimensions						
	<p>CONNECTION SIDE FEMALE MALE</p>			<p>CONNECTION SIDE FEMALE MALE</p>		
Accessories	Type	Part No.	Std. Pack	Type	Part No.	Std. Pack
Basic tool		95.101.0800.0	1		95.101.0800.0	1
Crimping die "E"	"E"	05.502.2400.0	1	"E"	05.502.2400.0	1
Contact positioner "2"	Contact positioner 2	05.502.3200.0	1	Contact positioner 2	05.502.3200.0	1
Extraction tool		05.502.0000.0	1		05.502.0000.0	1
Housings for size 24 begin on page 1244				Housings for size 24 begin on page 1244		

250 V contact inserts, crimp connection

revos HD

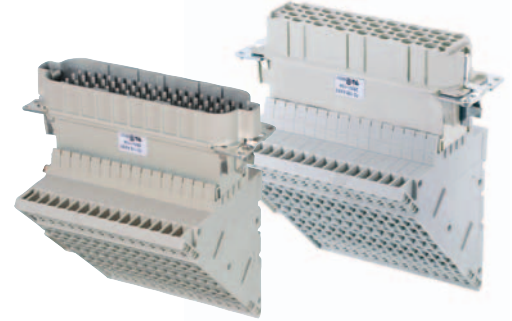
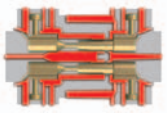


**80 pole + ground
Size 32**

Description	Type	Part No.	Std. Pack
Contact inserts for revos HD			
Male insert, marked 1-40	HD STC 80 25	available on request	
Male insert, marked 41-80			
Female insert, marked 1-40	HD BUC 80 25	available on request	
Female insert, marked 41-80			
Contacts	See page 1105		
Technical data			
Rated voltage	250 V		
Rated voltage according to UL/CSA	600 V		
Rated impulse voltage	4 kV		
Rated current	10 A		
Degree of pollution	3		
Rated cross section			
EN 60999	0.2 – 1.5 mm ²		
UL	24-16 AWG		
CSA	24-16 AWG		
Contacts			
Material			
Surface	Au, Sn		
Insulation strip length	4 mm		
Contact resistance	≤ 4 mΩ		
Mating cycles	Au 500/ Sn 50		
Screws	head design / recomm. torque		
Mounting screws	H1/0.5 – 0.7 Nm		
Clamping screws	-		
Ground conductor screws	M3.5/0.8 – 1.0 Nm		
Temperature range	-40 – +120 °C		
Dimensions			
Accessories			
Crimping tool	Type	Part No.	Std. Pack
Crimping die "E"	"E"	95.101.0800.0	1
Contact positioner "2"	Contact positioner 2	05.502.2400.0	1
Extraction tool		05.502.0000.0	1
Housings for size 32 begin on page 1262			

250 V multipole adapter with screw connection

revos^{HD}



40 pole + ground Size 16

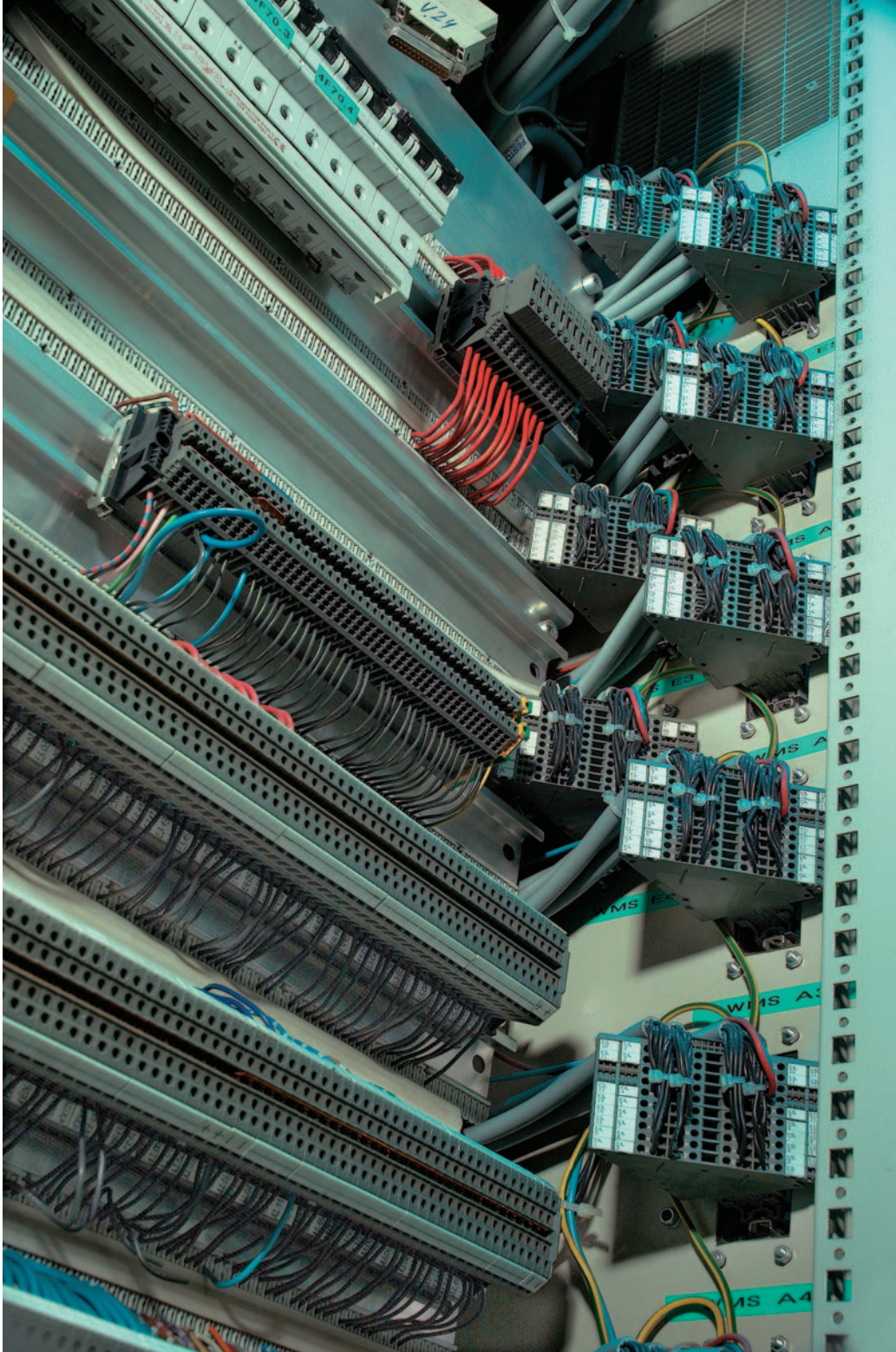
Approvals:

64 pole + ground Size 24

Approvals:

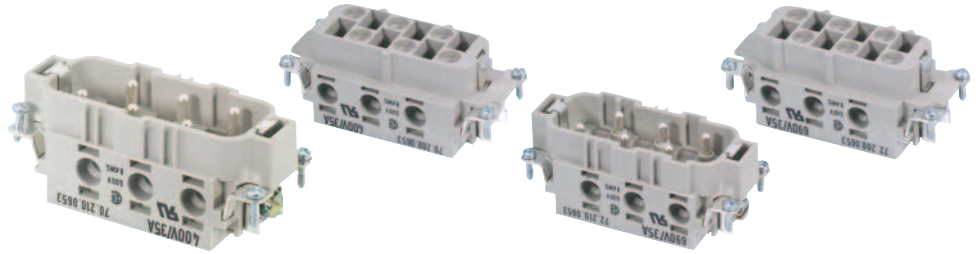
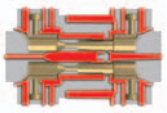
Description	Type	Part No.	Std. Pack	Type	Part No.	Std. Pack
Multipole adapter for revos^{HD}						
Male insert, ground right	HD SAS WR 40 2,5 25	73.115.4053.0	4	HD SAS WR 64 2,5 25	73.115.6453.0	2
Female insert, ground right	HD BAS WR 40 2,5 25	73.105.4053.0	4	HD BAS WR 64 2,5 25	73.105.6453.0	2
Male insert, ground left	HD SAS WL 40 2,5 25	73.110.4053.0	4	HD SAS WL 64 2,5 25	73.110.6453.0	2
Female insert, ground left	HD BAS WL 40 2,5 25	73.100.4053.0	4	HD BAS WL 64 2,5 25	73.100.6453.0	2
Technical data						
Rated voltage	250 V			250 V		
Rated voltage according to UL/CSA	600 V			600 V		
Rated impulse voltage	4 kV			4 kV		
Rated current	10 A			10 A		
Degree of pollution	3			3		
Rated cross section	0.5 – 2.5 mm ²			0.5 – 2.5 mm ²		
EN 60999	0.5 – 2.5 mm ²			0.5 – 2.5 mm ²		
UL	20-14 AWG			20-14 AWG		
CSA	20-14 AWG			20-14 AWG		
Contacts						
Material	Sn			Sn		
Surface	12 mm			12 mm		
Insulation strip length	≤ 6 mΩ			≤ 6 mΩ		
Contact resistance	50			50		
Mating cycles	H1/0.5 – 0.7 Nm			H1/0.5 – 0.7 Nm		
Screws head design / recomm. torque	M2.5/0.4 – 0.6 Nm			M2.5/0.4 – 0.6 Nm		
Mounting screws	H1/1.2 – 1.6 Nm			H1/1.2 – 1.6 Nm		
Clamping screws	-40 – +120 °C			-40 – +120 °C		
Ground conductor screws						
Temperature range						
Dimensions						
Note: These multipole adapters may only be used with the following bases:						
Size 16: Open-bottom base, double locking lever, without cover with cover 73.326.4028.0 73.327.4028.0 Open-bottom base, single locking lever, without cover with cover 76.326.4028.0 76.327.4028.0						
Size 24: Open-bottom base, double locking lever, without cover with cover 73.326.6428.0 73.327.6428.0 Open-bottom base, single locking lever, without cover with cover 76.326.6428.0 76.327.6428.0						
	Housing size 16			Housing size 24		

revos



Contact inserts, screw connection

revos POWER



6 pole + ground 400 V

Approvals:

6 pole + ground 690 V

Approvals:

Description	Type	Part No.	Std. Pack	Type	Part No.	Std. Pack
Contact inserts for revos POWER						
Male insert	POW STS 6 6,0 40 AG	70.210.0653.0	10	POW STS 6 6,0 69 AG	72.210.0653.0	10
Female insert	POW BUS 6 6,0 40 AG	70.200.0653.0	10	POW BUS 6 6,0 69 AG	72.200.0653.0	10
Derating curves	See page 1346			See page 1347		
Technical data						
Rated voltage	400 V			690 V		
Rated voltage according to UL/CSA	600 V			600 V		
Rated impulse voltage	6 kV			8 kV		
Rated current	35 A			35 A		
Degree of pollution	3			3		
Rated cross section						
EN 60999	2.5 – 6 mm ²			2.5 – 6 mm ²		
UL	14-8 AWG			14-8 AWG		
CSA	14-8 AWG			14-8 AWG		
Contacts						
Material	Copper alloy			Copper alloy		
Surface	Ag			Ag		
Insulation strip length	10 mm			10 mm		
Contact resistance	≤ 0.6 mΩ			≤ 0.6 mΩ		
Mating cycles	200			200		
Screws head design / recomm. torque						
Mounting screws	H1/0.5 – 0.7 Nm			H1/0.5 – 0.7 Nm		
Clamping screws	H1/1.2 – 1.6 Nm			H1/1.2 – 1.6 Nm		
Ground conductor screws	M5/2.0 – 2.5 Nm			M5/2.0 – 2.5 Nm		
Temperature range	-40 – +120 °C			-40 – +120 °C		
Dimensions						
Housings for size 16 begin on page 1198				Housings size 16 begin on page 1198		

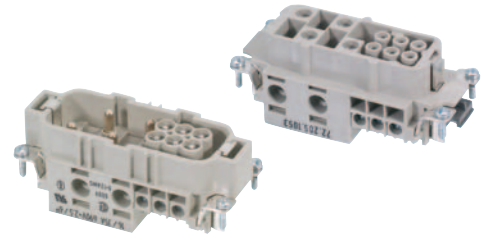
Contact inserts, screw connection

revos



4 pole + ground 690 V/400 V

Approvals:



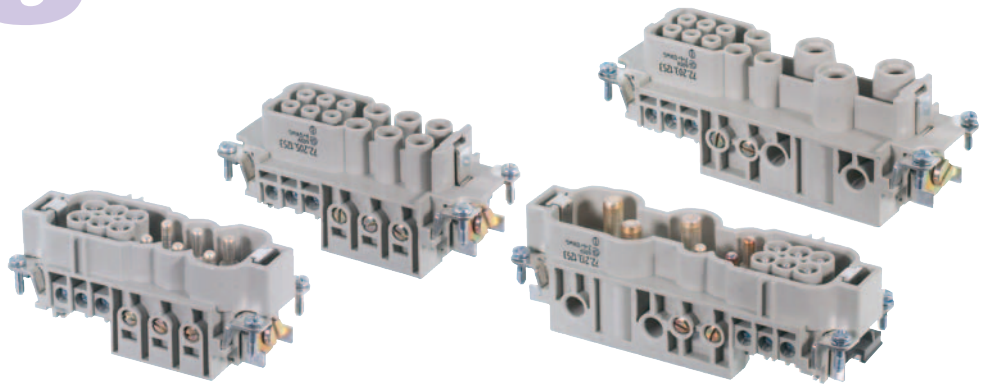
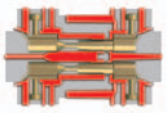
4/6 pole + ground 690 V

Approvals:

Description	Type	Part No.	Std. Pack	Type	Part No.	Std. Pack
Contact inserts for revos POWER						
Male insert	POW STS 4 16 64 AG	72.218.0453.0	10	POW STS 4/6 DA D AG	72.215.1053.0	10
Female insert	POW BUS 4 16 64 AG	72.208.0453.0	10	POW BUS 4/6 DA D AG	72.205.1053.0	10
Derating curves	See page 1346			See page 1346		
Technical data						
Rated voltage	L-L 690 V / L-PE 400 V			690 V		
Rated voltage according to UL/CSA	600 V			600 V		
Rated impulse voltage	6 kV			8 kV		
Rated current	82 A			4 Contacts 35 A / 6 Contacts 16 A		
Degree of pollution	3			3		
Rated cross section						
EN 60999	6 – 16 mm ²			4 x 2.5 – 6 mm ² and 6 x 1 – 2.5 mm ²		
UL	10-4 AWG			4 x 14-8 AWG and 6 x 16-12 AWG		
CSA	10-4 AWG			4 x 14-8 AWG and 6 x 16-12 AWG		
Contacts						
Material	Copper alloy			Copper alloy		
Surface	Ag			> 16 A Ag / 16 A Sn		
Insulation strip length	10 mm			10 mm / 7 mm		
Contact resistance	≤ 0.6 mΩ			≤ 1.0 mΩ		
Mating cycles	200			200		
Screws	head design / recomb. torque					
Mounting screws	H1/0.5 – 0.7 Nm			H1/0.5 – 0.7 Nm		
Clamping screws	H2/2.5 – 3.0 Nm			4 x H1/1.2 – 1.6 mm ² / 6 x H1/0.5 – 0.7 Nm		
Ground conductor screws	M5/2.0 – 2.5 Nm			M5/2.0 – 2.5 Nm		
Temperature range	-40 – +120 °C			-40 – +120 °C		
Dimensions						
	Housings for size 16 begin on page 1198			Housings for size 16 begin on page 1198		

Contact inserts, screw connection

revos POWER



6/6 pole + ground

Approvals:

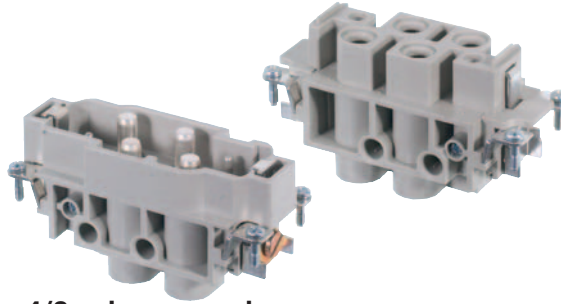
3/3/6 pole + ground

Approvals:

Description	Type	Part No.	Std. Pack	Type	Part No.	Std. Pack
Contact inserts for revos POWER						
Male insert	POW STS 6/6 GC CA AG	72.215.1253.0	10	POW STS 3/3/6 HEA CA AG	72.213.1253.0	10
Female insert	POW BUS 6/6 GC CA AG	72.205.1253.0	10	POW BUS 3/3/6 HEA CA AG	72.203.1253.0	10
Derating curves	See page 1346			See page 1347		
Technical data						
Rated voltage	L-L 690 V / L-PE 400 V and L-L 400 V / L-PE 230 V			L-L 690 V / L-PE 400 V and L-L 690 V / L-PE 400 V and L-L 400 V / L-PE 230 V		
Rated voltage according to UL/CSA	600 V			600 V		
Rated impulse voltage	6 Contacts 6 kV / 6 Contacts 4 kV			3 Contacts 6 kV / 3 Contacts 6 kV / 6 Contacts 4 kV		
Rated current	6 Contacts 40 A / 6 Contacts 16 A			3 Contacts 100 A / 3 Contacts 40 A / 6 Contacts 16 A		
Degree of pollution	3			3		
Rated cross section	6 x 4 – 10 mm ² / 6 x 1 – 2.5 mm ²			3 x 10 – 25 mm ² and 3 x 4 – 10 mm ² and 6 x 1 – 2.5 mm ²		
EN 60999	6 x 12-6 AWG / 6 x 16-12 AWG			3 x 12-8 AWG and 6 x 18 – 14 AWG		
UL	6 x 12-6 AWG / 6 x 16-12 AWG			3 x 12-8 AWG and 6 x 18 – 14 AWG		
CSA	6 x 12-6 AWG / 6 x 16-12 AWG			3 x 12-8 AWG and 6 x 18 – 14 AWG		
Contacts						
Material	Copper alloy			Copper alloy		
Surface	> 16 A Ag / 16 A Sn			> 16 A Ag / 16 A Sn		
Insulation strip length	10 mm / 7 mm			14 mm / 10 mm / 7 mm		
Contact resistance	≤ 1.5 mΩ			≤ 1.5 mΩ		
Mating cycles	200			200		
Screws head design / recomm. torque						
Mounting screws	H1/0.5 – 0.7 Nm			H1/0.5 – 0.7 Nm		
Clamping screws	6 x H1/0.5 – 0.7 Nm and 6 x M5/0.8 – 1.0 Nm			3 x M6/1.2 – 1.6 Nm and 3 x M5/0.8 – 1.0 Nm and 6 x H1/0.5 – 0.7 Nm		
Ground conductor screws	M5/2.0 – 2.5 Nm			M5/2.0 – 2.5 Nm		
Temperature range	-40 – 120 °C			-40 – 120 °C		
Dimensions						
Housings for size 16 begin on page 1198				Housings for size 24 begin on page 1230		

Contact inserts, screw connection

revos



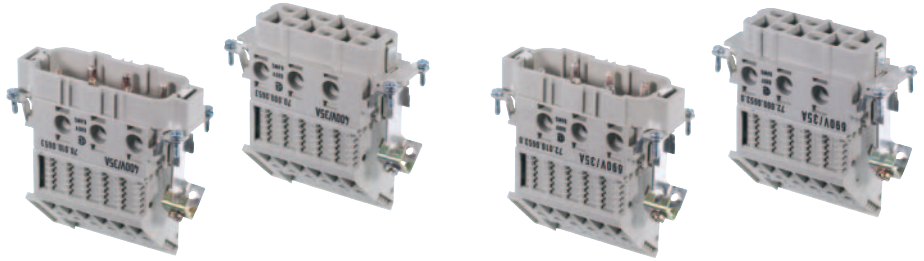
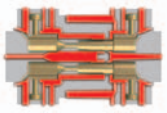
4/2 pole + ground
690 V/400 V

Approvals:

Description	Type	Part No.	Std. Pack
Contact inserts for revos POWER			
Male insert	POW STS 4/2 FA DB AG	72.215.0653.0	10
Female insert	POW BUS 4/2 FA DB AG	72.205.0653.0	10
Derating curves			
See page 1347			
Technical data			
Rated voltage	690 V and 400 V		
Rated voltage according to UL/CSA	600 V		
Rated impulse voltage	8 kV / 6 kV		
Rated current	4 Contacts 82 A (CSA 70 A) / 2 Contacts 16 A		
Degree of pollution	3		
Rated cross section			
EN 60999	4 x 6 – 16 mm ² and 2 x 1 – 2.5 mm ²		
UL	4 x 10-4 AWG and 2 x 16-12 AWG		
CSA	4 x 10-4 AWG and 2 x 16-12 AWG		
Contacts			
Material	Copper alloy		
Surface	> 16 A Ag / 16 A Sn		
Insulation strip length	15 mm / 9 mm		
Contact resistance	≤ 1.5 mΩ		
Mating cycles	200		
Screws head design / recomb. torque			
Mounting screws	H1/0.5 – 0.7 Nm		
Clamping screws	4 x M6/1.2 – 1.6 Nm and 2x H1/0.5 – 0.7 Nm		
Ground conductor screws	M5/2.0 – 2.5 Nm		
Temperature range			
-40 – 120 °C			
Dimensions			
Housings for size 16 begin on page 1198			

Multipole adapter with screw connection

revos POWER



Multipole adapter 6 pole + ground

Approvals:
Compatible with 70.200/210.0653.0

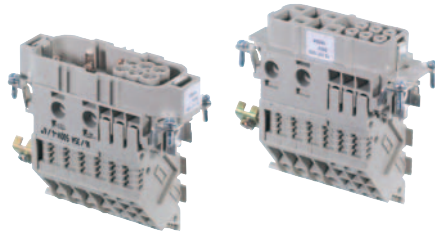
Multipole adapter 6 pole + ground

Approvals:
Compatible with 72.200/210.0653.0



Description	Type	Part No.	Std. Pack	Type	Part No.	Std. Pack
Multipole adapter for revos POWER						
Male insert, ground left	POW SAS WL 6 6,0 40 AG	70.010.0653.0	10	POW SAS WL 6 6,0 69 AG	72.010.0653.0	10
Male insert, ground right	POW SAS WR 6 6,0 40 AG	70.015.0653.0	10	POW SAS WR 6 6,0 69 AG	72.015.0653.0	10
Female insert, ground left	POW BAS WL 6 6,0 40 AG	70.000.0653.0	10	POW BAS WL 6 6,0 69 AG	72.000.0653.0	10
Female insert, ground right	POW BAS WR 6 6,0 40 AG	70.005.0653.0	10	POW BAS WR 6 6,0 69 AG	72.005.0653.0	10
Technical data						
Rated voltage	400 V			690 V		
Rated voltage according to UL/CSA	600 V			600 V		
Rated impulse voltage	6 kV			8 kV		
Rated current	35 A			35 A		
Degree of pollution	3			3		
Rated cross section						
EN 60999	2.5 – 6 mm ²			2.5 – 6 mm ²		
UL	14-8 AWG			14-8 AWG		
CSA	14-8 AWG			14-8 AWG		
Contacts						
Material	Copper alloy			Copper alloy		
Surface	Ag			Ag		
Insulation strip length	12 mm			12 mm		
Contact resistance	≤ 1 mΩ			≤ 1 mΩ		
Mating cycles	200			200		
Screws head design / recomm. torque						
Mounting screws	H1/0.5 – 0.7 Nm			H1/0.5 – 0.7 Nm		
Clamping screws	H1/0.8 – 1.0 Nm			H1/0.8 – 1.0 Nm		
Ground conductor screws	H1/1.2 – 1.6 Nm			H1/1.2 – 1.6 Nm		
Temperature range	-40 – +120 °C			-40 – +120 °C		
Dimensions						
Housings for size 16 begin on page 1202				Housings for size 16 begin on page 1222		

Multipole adapter with screw connection

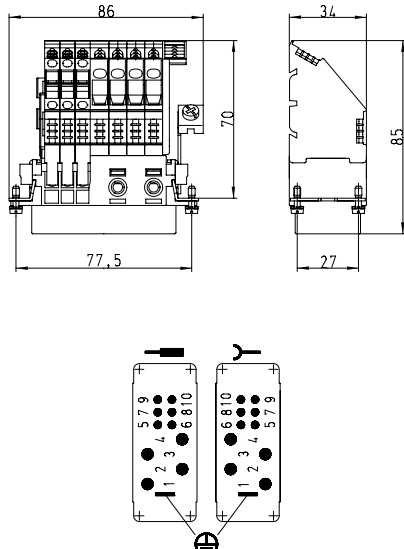
revos



Multipole adapter 4/6 pole + ground

Approvals:  

Compatible with 72.205/215.1053.0

Description	Type	Part No.	Std. Pack
Multipole adapter for revos POWER			
Male insert, ground left			
Male insert, ground right	POW SAS WR 4/6 DB 69 AG	72.117.1053.0	10
Female insert, ground left			
Female insert, ground right	POW BAS WR 4/6 DB 69 AG	72.107.1053.0	10
Technical data			
Rated voltage		500 V	
Rated voltage according to UL/CSA		600 V	
Rated impulse voltage		6 kV	
Rated current		35 A / 16 A	
Degree of pollution		3	
Rated cross section			
EN 60999		4 x 2.5 – 6 mm ² and 6 x 1.5 – 4 mm ²	
UL		4 x 14-8 AWG and 6 x 16-12 AWG	
CSA		4 x 14-8 AWG and 6 x 16-12 AWG	
Contacts			
Material		Copper alloy	
Surface		Ag / Sn	
Insulation strip length		12 mm	
Contact resistance		≤ 1.5 mΩ	
Mating cycles		200	
Screws head design / recomm. torque			
Mounting screws		H1/0.5 – 0.7 Nm	
Clamping screws		6 x M3/0.5 – 0.7 Nm / 4 x M3.5/0.8 – 1.0 Nm	
Ground conductor screws		H1/1.2 – 1.6 Nm	
Temperature range		-40 – +120 °C	
Dimensions			
			
	Housings for size 16 begin on page 1202		

Connector with trigger action frame 500 V

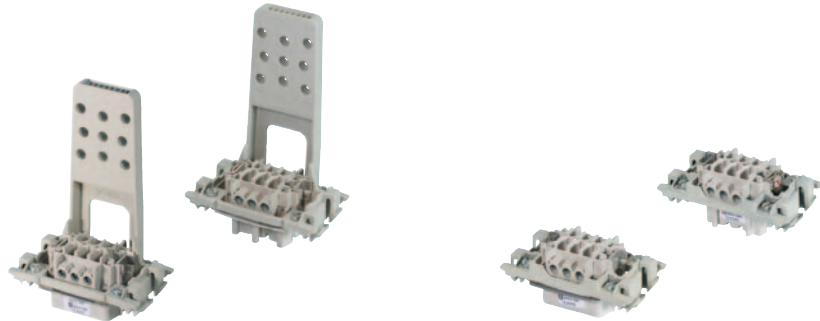
Screw connection

revos BASIC

The trigger action frames of the **revos** BASIC family are an economical option for implementing a pluggable feed-through connection for low-voltage switching systems. They can also be used as a cable-to-cable coupling that is mounted on a DIN rail TS35 according to DIN EN 50022 in a control cabinet. The connection provides protection degree IP20.

- The system has the following advantages:
- Reduction of material and mounting costs
 - Simple and trouble-free maintenance
 - Easy accessibility to the connector for testing purposes
 - Marking options with Wieland's marking system

The mounting application may influence the air and creepage distances and thus the rated voltage.



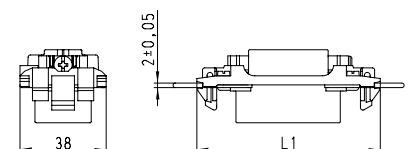
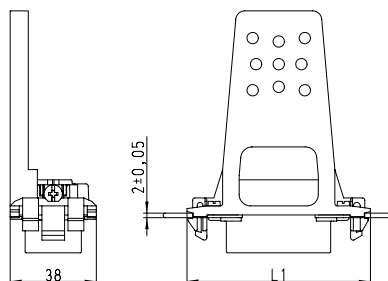
Trigger action frame with strain relief Screw connection

Approvals:

Trigger action frame Screw connection

Approvals:

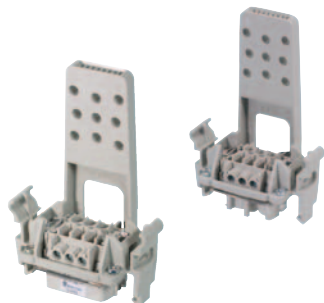
Description	Type	Part No.	Std. Pack	Type	Part No.	Std. Pack
Trigger action frame for revos BASIC 500 V						
6 pole + ground						
Male	ST 70.3 / 6 REVZ	Z5.571.0156.0	10	ST 70.3 / 6 REV	Z5.571.1156.0	10
Female	BU 70.3 / 6 REVZ	Z5.570.0156.0	10	BU 70.3 / 6 REV	Z5.570.1156.0	10
10 pole + ground						
Male	ST 70.3 / 10 REVZ	Z5.571.0256.0	10	ST 70.3 / 10 REV	Z5.571.1256.0	10
Female	BU 70.3 / 10 REVZ	Z5.570.0256.0	10	BU 70.3 / 10 REV	Z5.570.1256.0	10
16 pole + ground						
Male	ST 70.3 / 16 REVZ	Z5.571.0056.0	10	ST 70.3 / 16 REV	Z5.571.1056.0	10
Female	BU 70.3 / 16 REVZ	Z5.570.0056.0	10	BU 70.3 / 16 REV	Z5.570.1056.0	10
24 pole + ground						
Male	ST 70.3 / 24 REVZ	Z5.571.0356.0	10	ST 70.3 / 24 REV	Z5.571.1356.0	10
Female	BU 70.3 / 24 REVZ	Z5.570.0356.0	10	BU 70.3 / 24 REV	Z5.570.1356.0	10
Derating curves						
	See page 1343			See page 1343		
Technical data						
Rated voltage	500 V			500 V		
Rated voltage according to CSA	600 V			600 V		
Rated impulse voltage	6 kV			6 kV		
Rated current	16 A			16 A		
Degree of pollution	3			3		
Rated cross section						
EN 60999	0.5 – 2.5 mm ²			0.5 – 2.5 mm ²		
CSA	20 – 12 AWG			20 – 12 AWG		
Contacts						
Material	Copper alloy			Copper alloy		
Surface	Sn			Sn		
Insulation strip length	7 mm			7 mm		
Contact resistance	≤ 1.5 mΩ			≤ 1.5 mΩ		
Mating cycles	Sn 200			Sn 200		
Screws	head design / recomm. torque					
Mounting screws	H1/0.5 – 0.7 Nm			H1/0.5 – 0.7 Nm		
Clamping screws	H1/0.5 – 0.7 Nm			H1/0.5 – 0.7 Nm		
Ground conductor screws	H2/1.2 – 1.6 Nm			H2/1.2 – 1.6 Nm		
Temperature range	-40 – +120 °C			-40 – +120 °C		
Dimensions						
Number of poles		L1 [mm]				
6		67.5				
10		80.9				
16		101.0				
24		127.8				



Connector with trigger action frame 500 V

Screw connection

revos



Trigger action frame with strain relief, locking levers and screw connection

Approvals:



Trigger action frame with locking levers and screw connection

Approvals:

Description	Type	Part No.	Std. Pack	Type	Part No.	Std. Pack	
Trigger action frame for revos BASIC 500 V							
6 pole + ground							
Male	ST 70.3 / 6 RVZ	Z5.571.2156.0	10	ST 70.3 / 6 RV	Z5.571.3156.0	10	
Female	BU 70.3 / 6 RVZ	Z5.570.2156.0	10	BU 70.3 / 6 RV	Z5.570.3156.0	10	
10 pole + ground							
Male	ST 70.3 / 10 RVZ	Z5.571.2256.0	10	ST 70.3 / 10 RV	Z5.571.3256.0	10	
Female	BU 70.3 / 10 RVZ	Z5.570.2256.0	10	BU 70.3 / 10 RV	Z5.570.3256.0	10	
16 pole + ground							
Male	ST 70.3 / 16 RVZ	Z5.571.2056.0	10	ST 70.3 / 16 RV	Z5.571.3056.0	10	
Female	BU 70.3 / 16 RVZ	Z5.570.2056.0	10	BU 70.3 / 16 RV	Z5.570.3056.0	10	
24 pole + ground							
Male	ST 70.3 / 24 RVZ	Z5.571.2356.0	10	ST 70.3 / 24 RV	Z5.571.3356.0	10	
Female	BU 70.3 / 24 RVZ	Z5.570.2356.0	10	BU 70.3 / 24 RV	Z5.570.3356.0	10	
Derating curves	See page 1343			See page 1343			
Technical data							
Rated voltage	500 V			500 V			
Rated voltage according to CSA	600 V			600 V			
Rated impulse voltage	6 kV			6 kV			
Rated current	16 A			16 A			
Degree of pollution	3			3			
Rated cross section							
EN 60999	0.5 – 2.5 mm ²			0.5 – 2.5 mm ²			
CSA	20 – 12 AWG			20 – 12 AWG			
Contacts							
Material	Copper alloy			Copper alloy			
Surface	Sn			Sn			
Insulation strip length	7 mm			7 mm			
Contact resistance	≤ 1.5 mΩ			≤ 1.5 mΩ			
Mating cycles	Sn 200			Sn 200			
Screws	head design / recomb. torque						
Mounting screws	H1/0.5 – 0.7 Nm			H1/0.5 – 0.7 Nm			
Clamping screws	H1/0.5 – 0.7 Nm			H1/0.5 – 0.7 Nm			
Ground conductor screws	H2/1.2 – 1.6 Nm			H2/1.2 – 1.6 Nm			
Temperature range	-40 – +120 °C			-40 – +120 °C			
Dimensions							
Number of poles	L2 [mm]						
6	74.1						
10	87.5						
16	106.5						
24	134.4						

Connector with trigger action frame 500 V

Screw connection

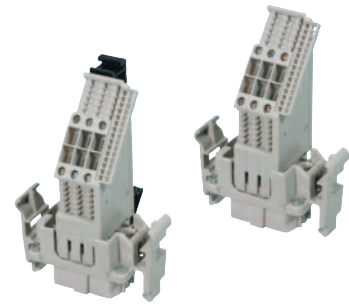
revos BASIC

The mounting type may influence the air and creepage distances and thus the rated voltage.



Multipole adapter with trigger action frame and screw connection

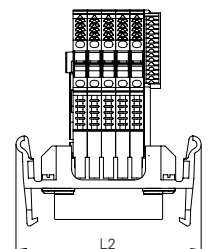
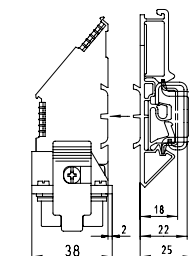
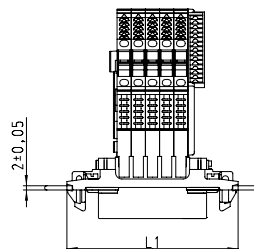
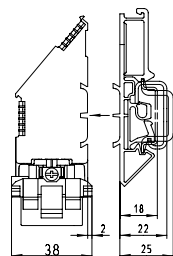
Approvals:



Multipole adapter with trigger action frame, locking levers and screw connection

Approvals:

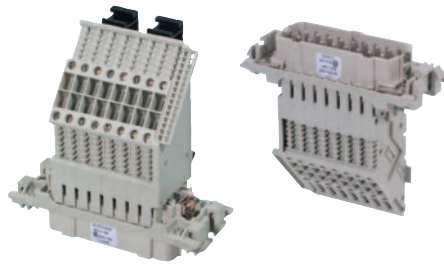
Description		Type	Part No.	Std. Pack	Type	Part No.	Std. Pack
Trigger action frame for revos BASIC 500 V							
6 pole + ground							
Male	ground right	ST 70.1 / 6 REV WR	Z5.573.1156.0	10	ST 70.1 / 6 RV WR	Z5.573.3156.0	10
Female	ground right	BU 70.1 / 6 REV WR	Z5.572.1156.0	10	BU 70.1 / 6 RV WR	Z5.572.3156.0	10
Male	ground right with U-foot	ST 70.1 / 6 REV U WR	Z5.573.5156.0	10	ST 70.1 / 6 RV U WR	Z5.573.7156.0	10
Female	ground right with U-foot	BU 70.1 / 6 REV U WR	Z5.572.5156.0	10	BU 70.1 / 6 RV U WR	Z5.572.7156.0	10
Male	ground left	ST 70.1 / 6 REV WL	Z5.573.0156.0	10	ST 70.1 / 6 RV WL	Z5.573.2156.0	10
Female	ground left	BU 70.1 / 6 REV WL	Z5.572.0156.0	10	BU 70.1 / 6 RV WL	Z5.572.2156.0	10
Male	ground left with U-foot	ST 70.1 / 6 REV U WL	Z5.573.4156.0	10	ST 70.1 / 6 RV U WL	Z5.573.6156.0	10
Female	ground left with U-foot	BU 70.1 / 6 REV U WL	Z5.572.4156.0	10	BU 70.1 / 6 RV U WL	Z5.572.6156.0	10
10 pole + ground							
Male	ground right	ST 70.1 / 10 REV WR	Z5.573.1256.0	10	ST 70.1 / 10 RV WR	Z5.573.3256.0	10
Female	ground right	BU 70.1 / 10 REV WR	Z5.572.1256.0	10	BU 70.1 / 10 RV WR	Z5.572.3256.0	10
Male	ground right with U-foot	ST 70.1 / 10 REV U WR	Z5.573.5256.0	10	ST 70.1 / 10 RV U WR	Z5.573.7256.0	10
Female	ground right with U-foot	BU 70.1 / 10 REV U WR	Z5.572.5256.0	10	BU 70.1 / 10 RV U WR	Z5.572.7256.0	10
Male	ground left	ST 70.1 / 10 REV WL	Z5.573.0256.0	10	ST 70.1 / 10 RV WL	Z5.573.2256.0	10
Female	ground left	BU 70.1 / 10 REV WL	Z5.572.0256.0	10	BU 70.1 / 10 RV WL	Z5.572.2256.0	10
Male	ground left with U-foot	ST 70.1 / 10 REV U WL	Z5.573.4256.0	10	ST 70.1 / 10 RV U WL	Z5.573.6256.0	10
Female	ground left with U-foot	BU 70.1 / 10 REV U WL	Z5.572.4256.0	10	BU 70.1 / 10 RV U WL	Z5.572.6256.0	10
Technical data							
Rated voltage		500 V			500 V		
Rated voltage according to CSA		600 V			600 V		
Rated impulse voltage		6 kV			6 kV		
Rated current		16 A			16 A		
Degree of pollution		3			3		
Rated cross section							
EN 60999		0.5 – 4 mm ²			0.5 – 4 mm ²		
CSA		20 – 12 AWG			20 – 12 AWG		
Contacts							
Material		Copper alloy			Copper alloy		
Surface		Sn			Sn		
Insulation strip length		12 mm			12 mm		
Contact resistance		≤ 3 mΩ			≤ 3 mΩ		
Mating cycles		Sn 200			Sn 200		
Screws		head design / recomm. torque					
Mounting screws		H1/0.5 – 0.7 Nm			H1/0.5 – 0.7 Nm		
Clamping screws		M3/0.5 – 0.7 Nm			M3/0.5 – 0.7 Nm		
Ground conductor screws		H2/1.2 – 1.6 Nm			H2/1.2 – 1.6 Nm		
Temperature range		-40 – +120 °C			-40 – +120 °C		
Dimensions							
Number of poles		L1 [mm]	L2 [mm]				
6		67.5	74.1				
10		80.9	87.5				
Accessories		Type	Part No.	Std. Pack	Type	Part No.	Std. Pack
Universal foot, 23 mm wide			05.583.0053.0	50		05.583.0053.0	50



Connector with trigger action frame 500 V

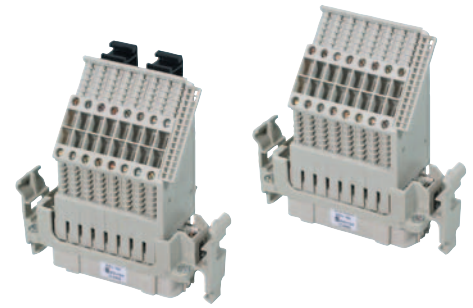
Screw connection

revos



Multipole adapter with trigger action frame and screw connection

Approvals:



Multipole adapter with trigger action frame, locking levers and screw connection

Approvals:

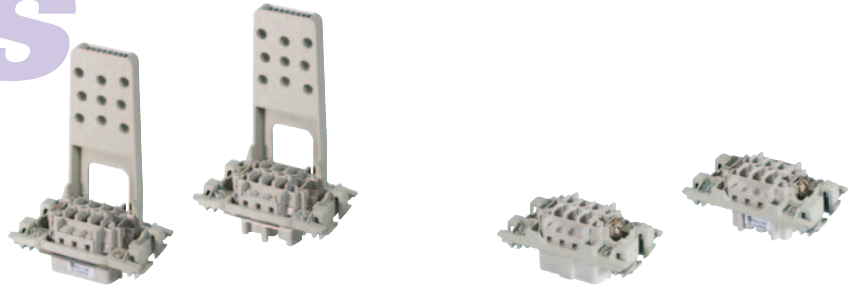
Description			Type	Part No.	Std. Pack	Type	Part No.	Std. Pack									
Trigger action frame for revos BASIC 500 V																	
16 pole + ground																	
Male	ground right		ST 70.1 /16 REV WR	Z5.573.1056.0	10	ST 70.1 /16 RV WR	Z5.573.3056.0	10									
Female	ground right		BU 70.1 /16 REV WR	Z5.572.1056.0	10	BU 70.1 /16 RV WR	Z5.572.3056.0	10									
Male	ground right with U-foot		ST 70.1 /16 REV U WR	Z5.573.5056.0	10	ST 70.1 /16 RV U WR	Z5.573.7056.0	10									
Female	ground right with U-foot		BU 70.1 /16 REV U WR	Z5.572.5056.0	10	BU 70.1 /16 RV U WR	Z5.572.7056.0	10									
Male	ground left		ST 70.1 /16 REV WL	Z5.573.0056.0	10	ST 70.1 /16 RV WL	Z5.573.2056.0	10									
Female	ground left		BU 70.1 /16 REV WL	Z5.572.0056.0	10	BU 70.1 /16 RV WL	Z5.572.2056.0	10									
Male	ground left with U-foot		ST 70.1 /16 REV U WL	Z5.573.4056.0	10	ST 70.1 /16 RV U WL	Z5.573.6056.0	10									
Female	ground left with U-foot		BU 70.1 /16 REV U WL	Z5.572.4056.0	10	BU 70.1 /16 RV U WL	Z5.572.6056.0	10									
24 pole + ground																	
Male	ground right		ST 70.1 /24 REV WR	Z5.573.1356.0	10	ST 70.1 /24 RV WR	Z5.573.3356.0	10									
Female	ground right		BU 70.1 /24 REV WR	Z5.572.1356.0	10	BU 70.1 /24 RV WR	Z5.572.3356.0	10									
Male	ground right with U-foot		ST 70.1 /24 REV U WR	Z5.573.5356.0	10	ST 70.1 /24 RV U WR	Z5.573.7356.0	10									
Female	ground right with U-foot		BU 70.1 /24 REV U WR	Z5.572.5356.0	10	BU 70.1 /24 RV U WR	Z5.572.7356.0	10									
Male	ground left		ST 70.1 /24 REV WL	Z5.573.0356.0	10	ST 70.1 /24 RV WL	Z5.573.2356.0	10									
Female	ground left		BU 70.1 /24 REV WL	Z5.572.0356.0	10	BU 70.1 /24 RV WL	Z5.572.2356.0	10									
Male	ground left with U-foot		ST 70.1 /24 REV U WL	Z5.573.4356.0	10	ST 70.1 /24 RV U WL	Z5.573.6356.0	10									
Female	ground left with U-foot		BU 70.1 /24 REV U WL	Z5.572.4356.0	10	BU 70.1 /24 RV U WL	Z5.572.6356.0	10									
Technical data																	
Rated voltage				500 V			500 V										
Rated voltage according to CSA				600 V			600 V										
Rated impulse voltage				6 kV			6 kV										
Rated current				16 A			16 A										
Degree of pollution				3			3										
Rated cross section																	
EN 60999				0.5 – 4 mm ²			0.5 – 4 mm ²										
CSA				20 – 12 AWG			20 – 12 AWG										
Contacts																	
Material				Copper alloy			Copper alloy										
Surface				Sn			Sn										
Insulation strip length				12 mm			12 mm										
Contact resistance				≤ 3 mΩ			≤ 3 mΩ										
Mating cycles				Sn 200			Sn 200										
Screws head design / recomb. torque																	
Mounting screws				H1/0.5 – 0.7 Nm			H1/0.5 – 0.7 Nm										
Clamping screws				M3/0.5 – 0.7 Nm			M3/0.5 – 0.7 Nm										
Ground conductor screws				H2/1.2 – 1.6 Nm			H2/1.2 – 1.6 Nm										
Temperature range				-40 – +120 °C			-40 – +120 °C										
Dimensions																	
<table border="1"> <thead> <tr> <th>Number of poles</th> <th>L1 [mm]</th> <th>L2 [mm]</th> </tr> </thead> <tbody> <tr> <td>16</td> <td>101.0</td> <td>106.5</td> </tr> <tr> <td>24</td> <td>127.8</td> <td>134.4</td> </tr> </tbody> </table>			Number of poles	L1 [mm]	L2 [mm]	16	101.0	106.5	24	127.8	134.4						
Number of poles	L1 [mm]	L2 [mm]															
16	101.0	106.5															
24	127.8	134.4															
Accessories			Type	Part No.	Std. Pack	Type	Part No.	Std. Pack									
Universal foot, 23 mm wide				05.583.0053.0	50		05.583.0053.0	50									

Connector with trigger action frame 500 V

Crimp connection

revos BASIC S

The mounting type may influence the air and creepage distances and thus the rated voltage.



Trigger action frame with strain relief Crimp connection

Approvals:

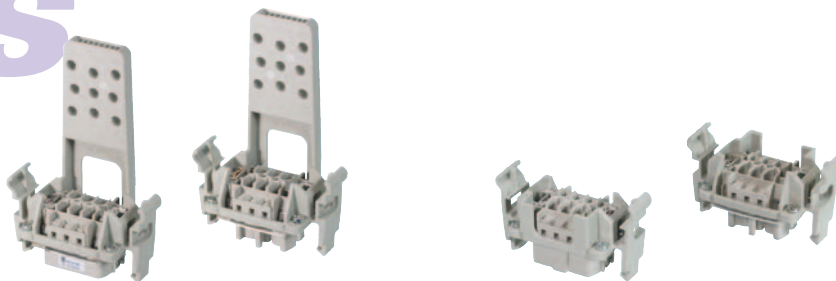
Trigger action frame Crimp connection

Approvals:

Description	Type	Part No.	Std. Pack	Type	Part No.	Std. Pack
Trigger action frame for revos BASIC 500 V						
6 pole + ground						
Male	ST 70.7 / 6 REVZ	Z5.571.4156.0	10	ST 70.7 / 6 REV	Z5.571.5156.0	10
Female	BU 70.7 / 6 REVZ	Z5.570.4156.0	10	BU 70.7 / 6 REV	Z5.570.5156.0	10
10 pole + ground						
Male	ST 70.7 / 10 REVZ	Z5.571.4256.0	10	ST 70.7 / 10 REV	Z5.571.5256.0	10
Female	BU 70.7 / 10 REVZ	Z5.570.4256.0	10	BU 70.7 / 10 REV	Z5.570.5256.0	10
16 pole + ground						
Male	ST 70.7 / 16 REVZ	Z5.571.4056.0	10	ST 70.7 / 16 REV	Z5.571.5056.0	10
Female	BU 70.7 / 16 REVZ	Z5.570.4056.0	10	BU 70.7 / 16 REV	Z5.570.5056.0	10
24 pole + ground						
Male	ST 70.7 / 24 REVZ	Z5.571.4356.0	10	ST 70.7 / 24 REV	Z5.571.5356.0	10
Female	BU 70.7 / 24 REVZ	Z5.570.4356.0	10	BU 70.7 / 24 REV	Z5.570.5356.0	10
Contacts	See page 1089			See page 1089		
Derating curves	See page 1343			See page 1343		
Technical data						
Rated voltage	500 V			500 V		
Rated voltage according to CSA	600 V			600 V		
Rated impulse voltage	6 kV			6 kV		
Rated current	16 A			16 A		
Degree of pollution	3			3		
Rated cross section						
EN 60999	0.5 – 4 mm ²			0.5 – 4 mm ²		
CSA	20 – 12 AWG			20 – 12 AWG		
Temperature range	-40 – +120 °C			-40 – +120 °C		
Dimensions						
Number of poles	L1 [mm]					
6	67.5					
10	80.9					
16	101.0					
24	127.8					
Accessories						
Crimping tool	Type	Part No.	Std. Pack	Type	Part No.	Std. Pack
Crimping die "B"		95.101.0800.0	1		95.101.0800.0	1
Contact positioner "3"		05.502.2100.0	1		05.502.2100.0	1
Extraction tool		05.502.3300.0	1		05.502.3300.0	1
		05.502.3500.0	1		05.502.3500.0	1

Connector with trigger action frame 500 V

revos



Trigger action frame with strain relief, locking levers and crimp connection

Approvals:

Trigger action frame with locking levers

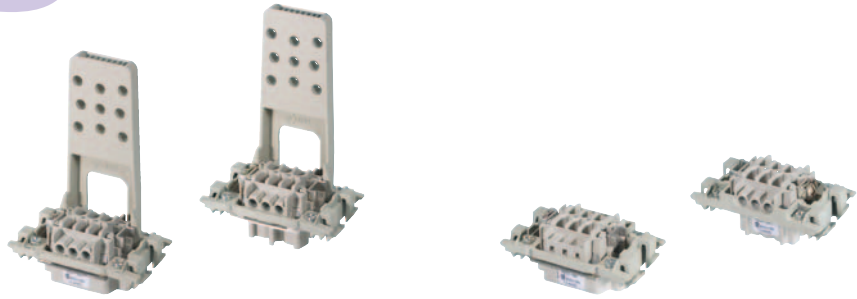
Approvals:

Description	Type	Part No.	Std. Pack	Type	Part No.	Std. Pack
Trigger action frame for revos BASIC 500 V						
6 pole + ground						
Male	ST 70.7 / 6 RVZ	Z5.571.6656.0	10	ST 70.7 / 6 RV	Z5.571.8656.0	10
Female	BU 70.7 / 6 RVZ	Z5.570.6656.0	10	BU 70.7 / 6 RV	Z5.570.8656.0	10
10 pole + ground						
Male	ST 70.7 / 10 RVZ	Z5.571.6756.0	10	ST 70.7 / 10 RV	Z5.571.8756.0	10
Female	BU 70.7 / 10 RVZ	Z5.570.6756.0	10	BU 70.7 / 10 RV	Z5.570.8756.0	10
16 pole + ground						
Male	ST 70.7 / 16 RVZ	Z5.571.6556.0	10	ST 70.7 / 16 RV	Z5.571.8556.0	10
Female	BU 70.7 / 16 RVZ	Z5.570.6556.0	10	BU 70.7 / 16 RV	Z5.570.8556.0	10
24 pole + ground						
Male	ST 70.7 / 24 RVZ	Z5.571.6856.0	10	ST 70.7 / 24 RV	Z5.571.8856.0	10
Female	BU 70.7 / 24 RVZ	Z5.570.6856.0	10	BU 70.7 / 24 RV	Z5.570.8856.0	10
Contacts	See page 1089			See page 1089		
Derating curves	See page 1343			See page 1343		
Technical data						
Rated voltage	500 V			500 V		
Rated voltage according to CSA	600 V			600 V		
Rated impulse voltage	6 kV			6 kV		
Rated current	16 A			16 A		
Degree of pollution	3			3		
Rated cross section						
EN 60999	0.5 – 4 mm ²			0.5 – 4 mm ²		
CSA	20 – 12 AWG			20 – 12 AWG		
Temperature range	-40 – +120 °C			-40 – +120 °C		
Dimensions						
Number of poles		L2 [mm]				
6		74.1				
10		87.5				
16		106.5				
24		134.4				
Accessories						
Type		Part No.		Std. Pack		
Crimping tool		95.101.0800.0		1		
Crimping die "B"		05.502.2100.0		1		
Contact positioner "3"		05.502.3300.0		1		
Extraction tool		05.502.3500.0		1		

Connector with trigger action frame 690 V

Screw connection

revos BASIC



Trigger action frame with strain relief Screw connection

Approvals:

Trigger action frame Screw connection

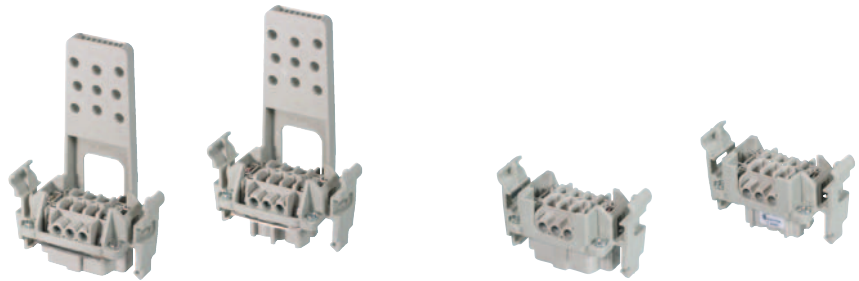
Approvals:

Description	Type	Part No.	Std. Pack	Type	Part No.	Std. Pack										
Trigger action frame for revos BASIC 690 V																
6 pole + ground																
Male	ST 72.3 / 6 REVZ	Z5.571.0656.0	10	ST 72.3 / 6 REV	Z5.571.1656.0	10										
Female	BU 72.3 / 6 REVZ	Z5.570.0656.0	10	BU 72.3 / 6 REV	Z5.570.1656.0	10										
10 pole + ground																
Male	ST 72.3 / 10 REVZ	Z5.571.0756.0	10	ST 72.3 / 10 REV	Z5.571.1756.0	10										
Female	BU 72.3 / 10 REVZ	Z5.570.0756.0	10	BU 72.3 / 10 REV	Z5.570.1756.0	10										
16 pole + ground																
Male	ST 72.3 / 16 REVZ	Z5.571.0556.0	10	ST 72.3 / 16 REV	Z5.571.1556.0	10										
Female	BU 72.3 / 16 REVZ	Z5.570.0556.0	10	BU 72.3 / 16 REV	Z5.570.1556.0	10										
24 pole + ground																
Male	ST 72.3 / 24 REVZ	Z5.571.0856.0	10	ST 72.3 / 24 REV	Z5.571.1856.0	10										
Female	BU 72.3 / 24 REVZ	Z5.570.0856.0	10	BU 72.3 / 24 REV	Z5.570.1856.0	10										
Technical data																
Rated voltage	690 V			690 V												
Rated voltage according to CSA	600 V			600 V												
Rated impulse voltage	8 kV			8 kV												
Rated current	16 A			16 A												
Degree of pollution	3			3												
Rated cross section																
EN 60999	0.5 – 2.5 mm ²			0.5 – 2.5 mm ²												
CSA	20 – 12 AWG			20 – 12 AWG												
Contacts																
Material	Copper alloy			Copper alloy												
Surface	Sn			Sn												
Insulation strip length	7 mm			7 mm												
Contact resistance	≤ 1.5 mΩ			≤ 1.5 mΩ												
Mating cycles	200			200												
Screws	head design / recomm. torque															
Mounting screws	H1/0.5 – 0.7 Nm			H1/0.5 – 0.7 Nm												
Clamping screws	H1/0.5 – 0.7 Nm			H1/0.5 – 0.7 Nm												
Ground conductor screws	H2/1.2 – 1.6 Nm			H2/1.2 – 1.6 Nm												
Temperature range	-40 – +120 °C			-40 – +120 °C												
Dimensions																
<table border="1"> <thead> <tr> <th>Number of poles</th> <th>L1 [mm]</th> </tr> </thead> <tbody> <tr> <td>6</td> <td>67.5</td> </tr> <tr> <td>10</td> <td>80.9</td> </tr> <tr> <td>16</td> <td>101.0</td> </tr> <tr> <td>24</td> <td>127.8</td> </tr> </tbody> </table>							Number of poles	L1 [mm]	6	67.5	10	80.9	16	101.0	24	127.8
Number of poles	L1 [mm]															
6	67.5															
10	80.9															
16	101.0															
24	127.8															

Connector with trigger action frame 690 V

Screw connection

revos



Trigger action frame with strain relief, locking levers and screw connection

Approvals:

Trigger action frame with locking levers and screw connection

Approvals:

Description	Type	Part No.	Std. Pack	Type	Part No.	Std. Pack	
Trigger action frame for revos BASIC 690 V							
6 pole + ground	ST 72.3 / 6 RVZ	Z5.571.2656.0	10				
Male	BU 72.3 / 6 RVZ	Z5.570.2656.0	10	ST 72.3 / 6 RV	Z5.571.3656.0	10	
Female				BU 72.3 / 6 RV	Z5.570.3656.0	10	
10 pole + ground	ST 72.3 / 10 RVZ	Z5.571.2756.0	10				
Male	BU 72.3 / 10 RVZ	Z5.570.2756.0	10	ST 72.3 / 10 RV	Z5.571.3756.0	10	
Female				BU 72.3 / 10 RV	Z5.570.3756.0	10	
16 pole + ground	ST 72.3 / 16 RVZ	Z5.571.2556.0	10				
Male	BU 72.3 / 16 RVZ	Z5.570.2556.0	10	ST 72.3 / 16 RV	Z5.571.3556.0	10	
Female				BU 72.3 / 16 RV	Z5.570.3556.0	10	
24 pole + ground	ST 72.3 / 24 RVZ	Z5.571.2856.0	10				
Male	BU 72.3 / 24 RVZ	Z5.570.2856.0	10	ST 72.3 / 24 RV	Z5.571.3856.0	10	
Female				BU 72.3 / 24 RV	Z5.570.3856.0	10	
Technical data							
Rated voltage		690 V			690 V		
Rated voltage according to CSA		600 V			600 V		
Rated impulse voltage		8 kV			8 kV		
Rated current		16 A			16 A		
Degree of pollution		3			3		
Rated cross section							
EN 60999		0.5 – 2.5 mm ²			0.5 – 2.5 mm ²		
CSA		20 – 12 AWG			20 – 12 AWG		
Contacts							
Material		Copper alloy			Copper alloy		
Surface		Sn			Sn		
Insulation strip length		7 mm			7 mm		
Contact resistance		≤ 1.5 mΩ			≤ 1.5 mΩ		
Mating cycles		200			200		
Screws head design / recomm. torque							
Mounting screws		H1/0.5 – 0.7 Nm			H1/0.5 – 0.7 Nm		
Clamping screws		H1/0.5 – 0.7 Nm			H1/0.5 – 0.7 Nm		
Ground conductor screws		H2/1.2 – 1.6 Nm			H2/1.2 – 1.6 Nm		
Temperature range		-40 – +120 °C			-40 – +120 °C		
Dimensions							
Number of poles	L2 [mm]						
6	74.1						
10	87.5						
16	106.5						
24	134.4						

Connector with trigger action frame 690 V

Screw connection

revos BASIC



Multipole adapter with trigger action frame and screw connection

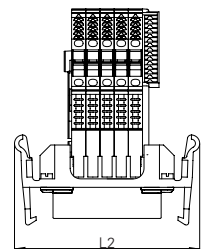
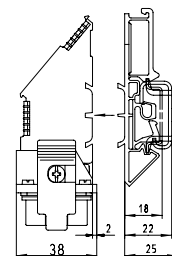
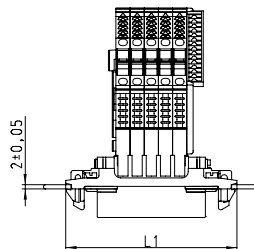
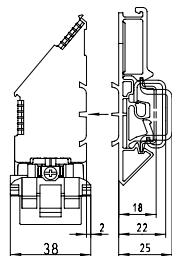
Approvals:



Multipole adapter with trigger action frame, locking levers and screw connection

Approvals:

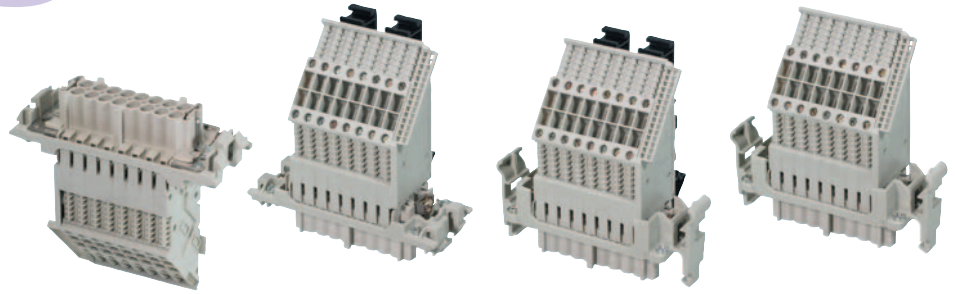
Description		Type	Part No.	Std. Pack	Type	Part No.	Std. Pack
Trigger action frame for revos BASIC 690 V							
6 pole + ground							
Male	ground right	ST 72.1 / 6 REV WR	Z5.573.1656.0	10	ST 72.1 / 6 RV WR	Z5.573.3656.0	10
Female	ground right	BU 72.1 / 6 REV WR	Z5.572.1656.0	10	BU 72.1 / 6 RV WR	Z5.572.3656.0	10
Male	ground right with U-foot	ST 72.1 / 6 REV U WR	Z5.573.5656.0	10	ST 72.1 / 6 RV U WR	Z5.573.7656.0	10
Female	ground right with U-foot	BU 72.1 / 6 REV U WR	Z5.572.5656.0	10	BU 72.1 / 6 RV U WR	Z5.572.7656.0	10
Male	ground left	ST 72.1 / 6 REV WL	Z5.573.0656.0	10	ST 72.1 / 6 RV WL	Z5.573.2656.0	10
Female	ground left	BU 72.1 / 6 REV WL	Z5.572.0656.0	10	BU 72.1 / 6 RV WL	Z5.572.2656.0	10
Male	ground left with U-foot	ST 72.1 / 6 REV U WL	Z5.573.4656.0	10	ST 72.1 / 6 RV U WL	Z5.573.6656.0	10
Female	ground left with U-foot	BU 72.1 / 6 REV U WL	Z5.572.4656.0	10	BU 72.1 / 6 RV U WL	Z5.572.6656.0	10
10 pole + ground							
Male	ground right	ST 72.1 / 10 REV WR	Z5.573.1756.0	10	ST 72.1 / 10 RV WR	Z5.573.3756.0	10
Female	ground right	BU 72.1 / 10 REV WR	Z5.572.1756.0	10	BU 72.1 / 10 RV WR	Z5.572.3756.0	10
Male	ground right with U-foot	ST 72.1 / 10 REV U WR	Z5.573.5756.0	10	ST 72.1 / 10 RV U WR	Z5.573.7756.0	10
Female	ground right with U-foot	BU 72.1 / 10 REV U WR	Z5.572.5756.0	10	BU 72.1 / 10 RV U WR	Z5.572.7756.0	10
Male	ground left	ST 72.1 / 10 REV WL	Z5.573.0756.0	10	ST 72.1 / 10 RV WL	Z5.573.2756.0	10
Female	ground left	BU 72.1 / 10 REV WL	Z5.572.0756.0	10	BU 72.1 / 10 RV WL	Z5.572.2756.0	10
Male	ground left with U-foot	ST 72.1 / 10 REV U WL	Z5.573.4756.0	10	ST 72.1 / 10 RV U WL	Z5.573.6756.0	10
Female	ground left with U-foot	BU 72.1 / 10 REV U WL	Z5.572.4756.0	10	BU 72.1 / 10 RV U WL	Z5.572.6756.0	10
Technical data							
Rated voltage		500 V			500 V		
Rated voltage according to CSA		600 V			600 V		
Rated impulse voltage		6 kV			6 kV		
Rated current		16 A			16 A		
Degree of pollution		3			3		
Rated cross section							
EN 60999		0.5 – 4 mm ²			0.5 – 4 mm ²		
CSA		20 – 12 AWG			20 – 12 AWG		
Contacts							
Material		Copper alloy			Copper alloy		
Surface		Sn			Sn		
Insulation strip length		12 mm			12 mm		
Contact resistance		≤ 3 mΩ			≤ 3 mΩ		
Mating cycles		200			200		
Screws		head design / recomm. torque					
Mounting screws		H1/0.5 – 0.7 Nm			H1/0.5 – 0.7 Nm		
Clamping screws		M3/0.5 – 0.7 Nm			M3/0.5 – 0.7 Nm		
Ground conductor screws		H2/1.2 – 1.6 Nm			H2/1.2 – 1.6 Nm		
Temperature range		-40 – +120 °C			-40 – +120 °C		
Dimensions							
Number of poles		L1 [mm]	L2 [mm]				
6		67.5	74.1				
10		80.9	87.5				
Accessories		Type	Part No.	Std. Pack	Type	Part No.	Std. Pack
Universal foot, 23 mm wide			05.583.0053.0	50		5.583.0053.0	50



Connector with trigger action frame 690 V

Screw connection

revos



Multipole adapter with trigger action frame and screw connection

Approvals:

Multipole adapter with trigger action frame, locking levers and screw connection

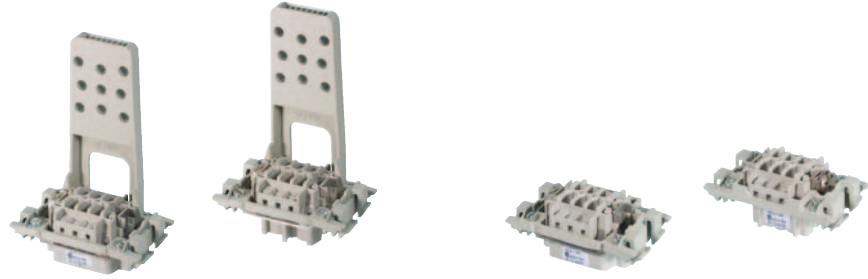
Approvals:

Description		Type	Part No.	Std. Pack	Type	Part No.	Std. Pack
Trigger action frame for revos BASIC 690 V							
16 pole + ground							
Male	ground right	ST 72.1 /16 REV WR	Z5.573.1556.0	10	ST 72.1 /16 RV WR	Z5.573.3556.0	10
Female	ground right	BU 72.1 /16 REV WR	Z5.572.1556.0	10	BU 72.1 /16 RV WR	Z5.572.3556.0	10
Male	ground right with U-foot	ST 72.1 /16 REV U WR	Z5.573.5556.0	10	ST 72.1 /16 RV U WR	Z5.573.7556.0	10
Female	ground right with U-foot	BU 72.1 /16 REV U WR	Z5.572.5556.0	10	BU 72.1 /16 RV U WR	Z5.572.7556.0	10
Male	ground left	ST 72.1 /16 REV WL	Z5.573.0556.0	10	ST 72.1 /16 RV WL	Z5.573.2556.0	10
Female	ground left	BU 72.1 /16 REV WL	Z5.572.0556.0	10	BU 72.1 /16 RV WL	Z5.572.2556.0	10
Male	ground left with U-foot	ST 72.1 /16 REV U WL	Z5.573.4556.0	10	ST 72.1 /16 RV U WL	Z5.573.6556.0	10
Female	ground left with U-foot	BU 72.1 /16 REV U WL	Z5.572.4556.0	10	BU 72.1 /16 RV U WL	Z5.572.6556.0	10
24 pole + ground							
Male	ground right	ST 72.1 /24 REV WR	Z5.573.1856.0	10	ST 72.1 /24 RV WR	Z5.573.3856.0	10
Female	ground right	BU 72.1 /24 REV WR	Z5.572.1856.0	10	BU 72.1 /24 RV WR	Z5.572.3856.0	10
Male	ground right with U-foot	ST 72.1 /24 REV U WR	Z5.573.5856.0	10	ST 72.1 /24 RV U WR	Z5.573.7856.0	10
Female	ground right with U-foot	BU 72.1 /24 REV U WR	Z5.572.5856.0	10	BU 72.1 /24 RV U WR	Z5.572.7856.0	10
Male	ground left	ST 72.1 /24 REV WL	Z5.573.0856.0	10	ST 72.1 /24 RV WL	Z5.573.2856.0	10
Female	ground left	BU 72.1 /24 REV WL	Z5.572.0856.0	10	BU 72.1 /24 RV WL	Z5.572.2856.0	10
Male	ground left with U-foot	ST 72.1 /24 REV U WL	Z5.573.4856.0	10	ST 72.1 /24 RV U WL	Z5.573.6856.0	10
Female	ground left with U-foot	BU 72.1 /24 REV U WL	Z5.572.4856.0	10	BU 72.1 /24 RV U WL	Z5.572.6856.0	10
Technical data							
Rated voltage		500 V			500 V		
Rated voltage according to CSA		600 V			600 V		
Rated impulse voltage		6 kV			6 kV		
Rated current		16 A			16 A		
Degree of pollution		3			3		
Rated cross section		0.5 – 4 mm ²			0.5 – 4 mm ²		
EN 60999		0.5 – 4 mm ²			0.5 – 4 mm ²		
CSA		20 – 12 AWG			20 – 12 AWG		
Contacts							
Material		Copper alloy			Copper alloy		
Surface		Sn			Sn		
Insulation strip length		12 mm			12 mm		
Contact resistance		≤ 3 mΩ			≤ 3 mΩ		
Mating cycles		200			200		
Screws head design / recomb. torque							
Mounting screws		H1/0.5 – 0.7 Nm			H1/0.5 – 0.7 Nm		
Clamping screws		M3/0.5 – 0.7 Nm			M3/0.5 – 0.7 Nm		
Ground conductor screws		H2/1.2 – 1.6 Nm			H2/1.2 – 1.6 Nm		
Temperature range		-40 – +120 °C			-40 – +120 °C		
Dimensions							
Number of poles		L1 [mm]	L2 [mm]				
16		101.0	106.5				
24		127.8	134.4				
Accessories							
Type		Part No.	Std. Pack				
Universal foot, 23 mm wide		05.583.0053.0	50				

Connector with trigger action frame 690 V

Crimp connection

revos BASIC



Trigger action frame with strain relief Crimp connection

Approvals:

Trigger action frame Crimp connection

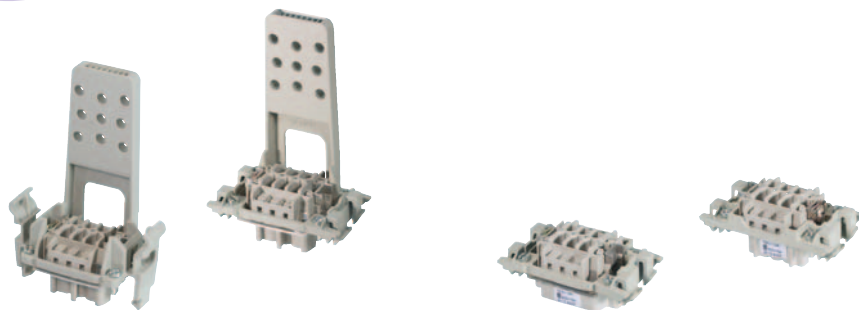
Approvals:

Description	Type	Part No.	Std. Pack	Type	Part No.	Std. Pack
Trigger action frame for revos BASIC 690 V						
6 pole + ground						
Male	ST 72.7 / 6 REVZ	Z5.571.4656.0	10	ST 72.7 / 6 REV	Z5.571.5656.0	10
Female	BU 72.7 / 6 REVZ	Z5.570.4656.0	10	BU 72.7 / 6 REV	Z5.570.5656.0	10
10 pole + ground						
Male	ST 72.7 / 10 REVZ	Z5.571.4756.0	10	ST 72.7 / 10 REV	Z5.571.5756.0	10
Female	BU 72.7 / 10 REVZ	Z5.570.4756.0	10	BU 72.7 / 10 REV	Z5.570.5756.0	10
16 pole + ground						
Male	ST 72.7 / 16 REVZ	Z5.571.4556.0	10	ST 72.7 / 16 REV	Z5.571.5556.0	10
Female	BU 72.7 / 16 REVZ	Z5.570.4556.0	10	BU 72.7 / 16 REV	Z5.570.5556.0	10
24 pole + ground						
Male	ST 72.7 / 24 REVZ	Z5.571.4856.0	10	ST 72.7 / 24 REV	Z5.571.5856.0	10
Female	BU 72.7 / 24 REVZ	Z5.570.4856.0	10	BU 72.7 / 24 REV	Z5.570.5856.0	10
Contacts	See page 1089			See page 1089		
Technical data						
Rated voltage	690 V			690 V		
Rated voltage according to CSA	600 V			600 V		
Rated impulse voltage	8 kV			8 kV		
Rated current	16 A			16 A		
Degree of pollution	3			3		
Rated cross section						
EN 60999	0.5 – 4 mm ²			0.5 – 4 mm ²		
CSA	20 – 12 AWG			20 – 12 AWG		
Temperature range	-40 – +120 °C			-40 – +120 °C		
Dimensions						
Number of poles	L1 [mm]					
6	67.5					
10	80.9					
16	101.0					
24	127.8					
Accessories						
Crimping tool	Type	Part No.	Std. Pack	Type	Part No.	Std. Pack
Crimping die "B"		95.101.0800.0	1		95.101.0800.0	1
Contact positioner "3"		05.502.2100.0	1		05.502.2100.0	1
Extraction tool		05.502.3300.0	1		05.502.3300.0	1
		05.502.3500.0	1		05.502.3500.0	1

Connector with trigger action frame 690 V

Crimp connection

revos



Trigger action frame with strain relief, locking levers and crimp connection

Approvals:

Trigger action frame with locking levers Crimp connection

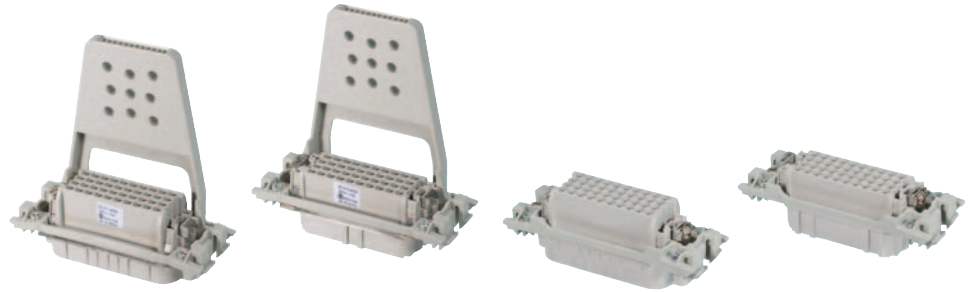
Approvals:

Description	Type	Part No.	Std. Pack	Type	Part No.	Std. Pack
Trigger action frame for revos BASIC 690 V						
6 pole + ground						
Male	ST 72.7 / 6 RVZ	Z5.571.7656.0	10	ST 72.7 / 6 RV	Z5.571.9656.0	10
Female	BU 72.7 / 6 RVZ	Z5.570.7656.0	10	BU 72.7 / 6 RV	Z5.570.9656.0	10
10 pole + ground						
Male	ST 72.7 / 10 RVZ	Z5.571.7756.0	10	ST 72.7 / 10 RV	Z5.571.9756.0	10
Female	BU 72.7 / 10 RVZ	Z5.570.7756.0	10	BU 72.7 / 10 RV	Z5.570.9756.0	10
16 pole + ground						
Male	ST 72.7 / 16 RVZ	Z5.571.7556.0	10	ST 72.7 / 16 RV	Z5.571.9556.0	10
Female	BU 72.7 / 16 RVZ	Z5.570.7556.0	10	BU 72.7 / 16 RV	Z5.570.9556.0	10
24 pole + ground						
Male	ST 72.7 / 24 RVZ	Z5.571.7856.0	10	ST 72.7 / 24 RV	Z5.571.9856.0	10
Female	BU 72.7 / 24 RVZ	Z5.570.7856.0	10	BU 72.7 / 24 RV	Z5.570.9856.0	10
Contacts	See page 1089			See page 1089		
Technical data						
Rated voltage	690 V			690 V		
Rated voltage according to CSA	600 V			600 V		
Rated impulse voltage	8 kV			8 kV		
Rated current	16 A			16 A		
Degree of pollution	3			3		
Rated cross section						
EN 60999	0.5 – 4 mm ²			0.5 – 4 mm ²		
CSA	20 – 12 AWG			20 – 12 AWG		
Temperature range	-40 – +120 °C			-40 – +120 °C		
Dimensions						
Number of poles	L2 [mm]					
6	74.1					
10	87.5					
16	106.5					
24	134.4					
Accessories	Type	Part No.	Std. Pack	Type	Part No.	Std. Pack
Crimping tool		95.101.0800.0	1		95.101.0800.0	1
Crimping die "B"		05.502.2100.0	1		05.502.2100.0	1
Contact positioner "3"		05.502.3300.0	1		05.502.3300.0	1
Extraction tool		05.502.3500.0	1		05.502.3500.0	1

Connector with trigger action frame 250 V

Crimp connection

revos HD



Trigger action frame with strain relief Crimp connection

Approvals:

Trigger action frame Crimp connection

Approvals:

Description	Type	Part No.	Std. Pack	Type	Part No.	Std. Pack
Trigger action frame for revos HD 250 V						
40 pole + ground						
Male	ST 73.7 /40 REVZ	Z5.571.6056.0	10	ST 73.7 /40 REV	Z5.571.7056.0	10
Female	BU 73.7 /40 REVZ	Z5.570.6056.0	10	BU 73.7 /40 REV	Z5.570.7056.0	10
64 pole + ground						
Male	ST 73.7 /64 REVZ	Z5.571.6156.0	10	ST 73.7 /64 REV	Z5.571.7156.0	10
Female	BU 73.7 /64 REVZ	Z5.570.6156.0	10	BU 73.7 /64 REV	Z5.570.7156.0	10
Contacts	See page 1105			See page 1105		
Technical data						
Rated voltage	250 V			250 V		
Rated voltage according to CSA	600 V			600 V		
Rated impulse voltage	4 kV			4 kV		
Rated current	10 A			10 A		
Degree of pollution	3			3		
Rated cross section	0.2 – 1.5 mm ²			0.2 – 1.5 mm ²		
EN 60999	24 – 16 AWG			24 – 16 AWG		
CSA	-40 – +120 °C			-40 – +120 °C		
Temperature range						
Dimensions						
Number of poles	L1 [mm]					
16	101.0					
24	127.8					
Accessories						
Basic tool	Type	Part No.	Std. Pack	Type	Part No.	Std. Pack
Crimping die "E"		95.101.0800.0	1		95.101.0800.0	1
Contact positioner "2"		05.502.2400.0	1		05.502.2400.0	1
Extraction tool		05.502.3200.0	1		05.502.3200.0	1
		05.502.0000.0	1		05.502.0000.0	1

Connector with trigger action frame 250 V

Screw connection

revos HD



Multipole adapter with trigger action frame and screw connection

Approvals:

Multipole adapter with trigger action frame, locking levers and screw connection

Approvals:

Description	Type	Part No.	Std. Pack	Type	Part No.	Std. Pack	
Trigger action frame for revos HD 250 V							
40 pole + ground							
Male	ground right	ST 73.1 /40 REV WR	Z5.573.8356.0	4	ST 73.1 /40 RV WR	Z5.573.8956.0	4
Female	ground right	BU 73.1 /40 REV WR	Z5.572.8356.0	4	BU 73.1 /40 RV WR	Z5.572.8956.0	4
Male	ground right with U-foot	ST 73.1 /40 REV U WR	Z5.573.9356.0	2	ST 73.1 /40 RV U WR	Z5.573.9756.0	2
Female	ground right with U-foot	BU 73.1 /40 REV U WR	Z5.572.9356.0	2	BU 73.1 /40 RV U WR	Z5.572.9756.0	2
Male	ground left	ST 73.1 /40 REV WL	Z5.573.8056.0	4	ST 73.1 /40 RV WL	Z5.573.8656.0	4
Female	ground left	BU 73.1 /40 REV WL	Z5.572.8056.0	4	BU 73.1 /40 RV WL	Z5.572.8656.0	4
Male	ground left with U-foot	ST 73.1 /40 REV U WL	Z5.573.9156.0	2	ST 73.1 /40 RV U WL	Z5.573.9556.0	2
Female	ground left with U-foot	BU 73.1 /40 REV U WL	Z5.572.9156.0	2	BU 73.1 /40 RV U WL	Z5.572.9556.0	2
64 pole + ground							
Male	ground right	ST 73.1 /64 REV WR	Z5.573.8456.0	2	ST 73.1 /64 RV WR	Z5.573.9056.0	2
Female	ground right	BU 73.1 /64 REV WR	Z5.572.8456.0	2	BU 73.1 /64 RV WR	Z5.572.9056.0	2
Male	ground right with U-foot	ST 73.1 /64 REV U WR	Z5.573.9456.0	2	ST 73.1 /64 RV U WR	Z5.573.9856.0	2
Female	ground right with U-foot	BU 73.1 /64 REV U WR	Z5.572.9456.0	2	BU 73.1 /64 RV U WR	Z5.572.9856.0	2
Male	ground left	ST 73.1 /64 REV WL	Z5.573.8156.0	2	ST 73.1 /64 RV WL	Z5.573.8756.0	2
Female	ground left	BU 73.1 /64 REV WL	Z5.572.8156.0	2	BU 73.1 /64 RV WL	Z5.572.8756.0	2
Male	ground left with U-foot	ST 73.1 /64 REV U WL	Z5.573.9256.0	2	ST 73.1 /64 RV U WL	Z5.573.9656.0	2
Female	ground left with U-foot	BU 73.1 /64 REV U WL	Z5.572.9256.0	2	BU 73.1 /64 RV U WL	Z5.572.9656.0	2
Technical data							
Rated voltage		250 V			250 V		
Rated voltage according to CSA		600 V			600 V		
Rated impulse voltage		4 kV			4 kV		
Rated current		10 A			10 A		
Degree of pollution		3			3		
Rated cross section							
EN 60999		0.2 – 1.5 mm ²			0.2 – 1.5 mm ²		
CSA		24 – 16 AWG			24 – 16 AWG		
Screws head design / recomm. torque							
Mounting screws		H1/0.5 – 0.7 Nm			H1/0.5 – 0.7 Nm		
Clamping screws		-			-		
Ground conductor screws		M3.5/0.8 – 1.0 Nm			M3.5/0.8 – 1.0 Nm		
Temperature range		-40 – +120 °C			-40 – +120 °C		
Dimensions							
Size	L1 [mm]	L2 [mm]					
16	101.0	106.5					
24	127.8	134.4					
Accessories							
Universal foot, 23 mm wide		Type	Part No.	Std. Pack	Type	Part No.	Std. Pack
			05.583.0053.0	50		05.583.0053.0	50

revos

