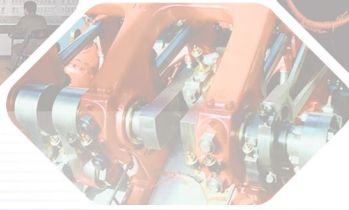


# Operator Interfaces for Industry



Allen-Bradley

GE Fanuc

PACIFIC SCIENTIFIC

Bristol Babcock

Compumotor

ANIMATICS Motion Control

CONTROL MICROSYSTEMS

EMERSON Motion Control



Koyo Direct Logic

MITSUBISHI

GALIL

MODICON (Schneider Electric)

OMRON

SIXNET

MODBUS TCP/IP

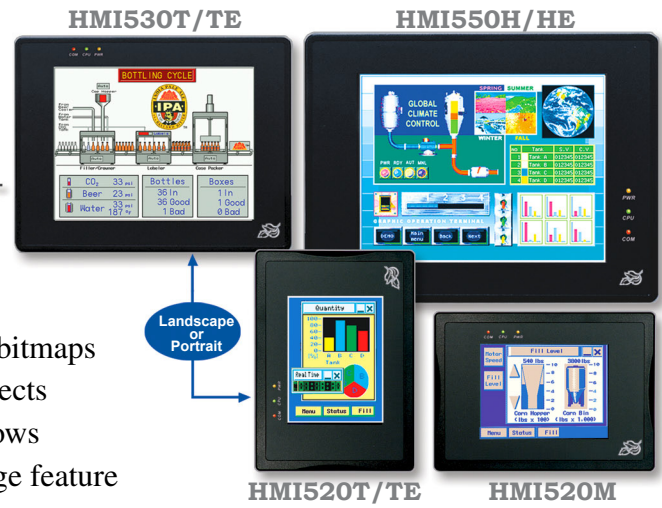
YASKAWA

SIEMENS

idec



# Silver Series



- Animations and moving shape
- Recipes and real-time clock
- Simulation mode, on and off line
- Place unlimited objects anywhere
- Importing of bitmaps
- Stackable objects
- Pop-up windows
- Multi-language feature

## Models

	HMI520M		HMI520T	HMI520TE	HMI530T	HMI530TE	HMI550H	HMI550HE
	Classic		Classic	Enhanced	Classic	Enhanced	Classic	Enhanced
<b>Display Type</b>	5.7" STN 4 color blue		5.6" TFT 256 color		7.7" TFT 256 color		10.4" TFT 256 color	
<b>Display Size (WxH) Viewing Area</b>	4.5" x 3.5" [114 x 89 mm]		4.5" x 3.5" [114 x 89 mm]		6.1" x 4.6" [155 x 117 mm]		8.5" x 6.0" [216 x 152 mm]	
<b>Display Brightness</b>	60 cd/m <sup>2</sup>		500 cd/m <sup>2</sup>		400 cd/m <sup>2</sup>		400 cd/m <sup>2</sup>	
<b>Display Contrast</b>	15:1		150:1		250:1		300:1	
<b>Display Resolution</b>	320x240 pixels		320x234 pixels		640x480 pixels		640x480 pixels	
<b>User Memory</b>	1 M Bytes		1 M Bytes	2 M Bytes	2 M Bytes	4 M Bytes	2 M Bytes	4 M Bytes
<b>Ethernet Port (10 Base-T)</b>	No		No	Yes	No	Yes	No	Yes
<b>Compact Flash Slot</b>	No		No	Yes	No	Yes	No	Yes
<b>Printer Port</b>	No		No		Yes		Yes	
<b>Dimensions (WxHxD)</b>	8.0"x5.9"x1.9" [204x150x48mm]		8.0"x5.9"x1.9" [204x150x48mm]		9.1"x6.9"x2.2" [231x176x55mm]		12.4"x9.4"x2.4" [315x238x62mm]	

# Ivory Series

## Open-platform Operator Interfaces

Preloaded with Microsoft®  
Windows® CE.net™4.2



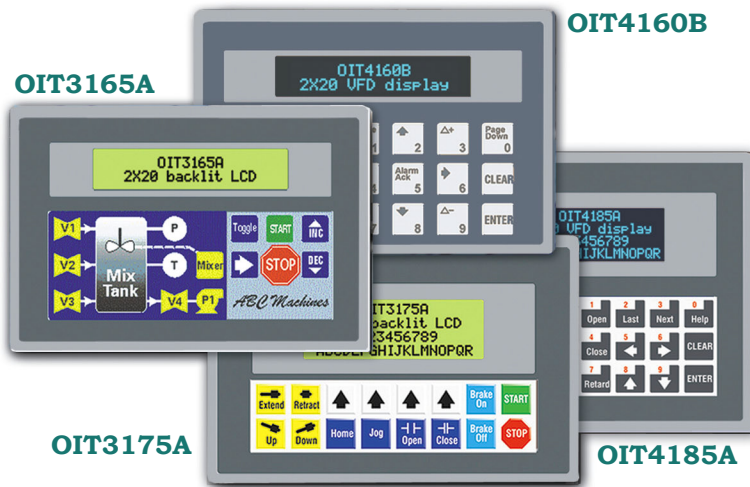
- Ethernet
- USB ports
- 3 RS232, RS422 or RS485 Serial ports
- Built-in CompactFlash™ port
- EIDE port (12" model) for attaching flash drives
- Fanless, low-power operation
- Use with any Windows® CE.net™4.2-compatible HMI software



	HMI606C-001	HMI612H-001
<b>Display Type</b>	5.7" STN, 256 color	12.1" STN, 65536 color
<b>Display Brightness</b>	150 cd/m <sup>2</sup>	250 cd/m <sup>2</sup>
<b>Display Resolution</b>	320x240	800x600
<b>Touchscreen</b>	4-wire analog resistive	
<b>CPU Type</b>	Cirrus Logic EP9315 200Mhz 32 bit RISC-processor with built-in graphics accelerator	
<b>Memory</b>	32 Mb Flash and 64 Mb DRAM built-in	
<b>Communication Ports</b>	3 Serial Ports - Com1: RS232/RS485, Com2: RS232, Com3: RS232/RS485 2w	
<b>Ethernet</b>	10/100Base-T	
<b>USB Host Ports</b>	2 USB 2.0 (12 Mbps)	3 USB 2.0 (12 Mbps)
<b>Audio Port</b>	Line Out	Line Out, Mic In
<b>Real Time Clock</b>	Built-in	
<b>Dimensions (WxHxD)</b>	8.0"x5.9"x1.9" [204x150x48mm]	12.7"x9.6"x2.0" [322x243x51mm]

# MicroOIT Family

CLASS I DIVISION 2



- VFD or LCD display
- 40 & 80 character text display
- RS-232 or RS-485 communications
- User-definable global & screen-dependent function keys
- Create custom slide-in legends
- Audible and tactile feed back
- Communicates with over 80 controller families

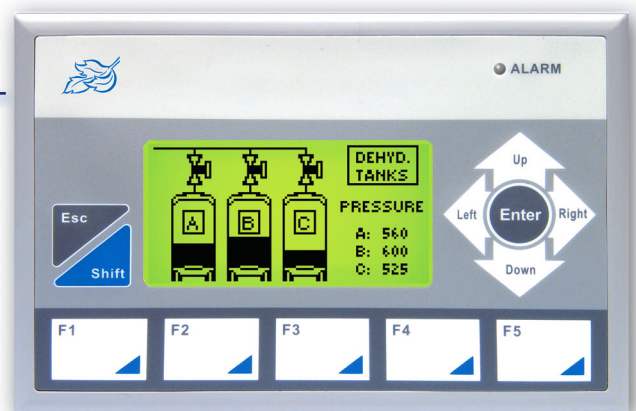
Alphanumeric OITs	OIT3160B/OIT4160B	OIT3165A/OIT4165A	OIT3175A/OIT4175A	OIT3185A/OIT4185A
<b>Display</b> (lines x characters)	2 x 20 backlit LCD/VFD	2 x 20 backlit LCD/VFD	4 x 20 backlit LCD/VFD	4 x 20 backlit LCD/VFD
<b>Dimensions</b> (WxHxD)	6" x 4" x 1.77"	6" x 4" x 1.77"	6" x 4" x 1.77"	6" x 5" x 1.77"
<b>Key types available</b>	Numeric keypad; 6 screen-dependent function keys	Up to 24 user definable — screen-dependent or global function keys, control keys, or numeric keys	Up to 16 user definable — screen-dependent or global function keys, control keys, or numeric keys	Up to 24 user definable — screen-dependent or global function keys, control keys, or numeric keys
<b>Tactile key feedback</b>	Yes	No	No	No
<b>Slide-in Legend</b>	No	Yes	Yes	Yes

## Blue Series



- 3" Graphic LCD display
- Display resolution 128 x 64 pixels
- RS-232 or RS-485 communications
- User-definable function keys
- Display text (TrueType® fonts) or graphics
- Realtime clock
- Audible and tactile feedback
- Bar graphs and meters
- For tight spaces — only 5.75" x 3.75"

BLU300M



**Maple Systems, Inc.**

808 134th Street SW, Suite 120

Everett, WA 98204-7333



# Operator Interfaces for Industry



**425.745.3229 [www.maplesystems.com](http://www.maplesystems.com)**

**Allen-Bradley**  
**MODBUS RTU**  
Telemecanique  
**ASCII Slave**  
**MODICON** (Schneider Electric)  
**idec**  
**SIXNET**  
**Bristol Babcock**  
**Aromat**

**(Control Technology Corporation)**  
**Koyo** Direct Logic  
**KEYENCE**  
**YASKAWA**  
**Compumotor**  
**GE Fanuc**

**EMERSON** Motion Control  
**MITSUBISHI**  
**SIEMENS**  
**OMRON**  
**BALDOR**  
**INDUSTRIAL INDEXING SYSTEMS**

**GALIL**  
**CONTROL MICROSYSTEMS**  
**MODBUS TCP/IP**

**Windows CE.net**

**DEHYD. TANKS**  
**PRESSURE**  
A: 560  
B: 600  
C: 525

**DIT3165A**  
**2X20 backlit LCD**

**Mix Tank**  
**STOP**  
**START**  
**DEC**  
**ASC Machines**