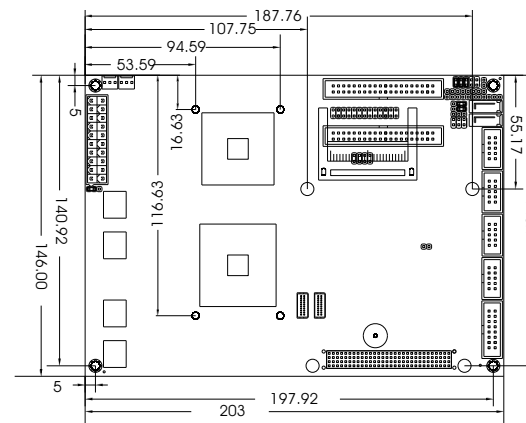
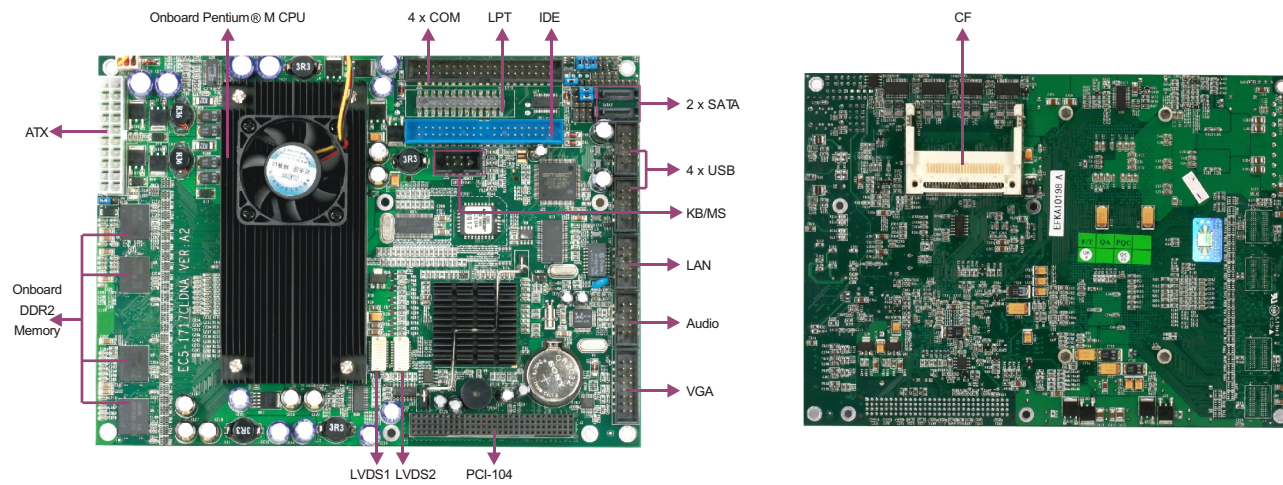


# EC5-1717CLDNA

5.25" SBC with Pentium® M CPU /Memory and LVDS/VGA/SSD/LAN/Audio



## Features

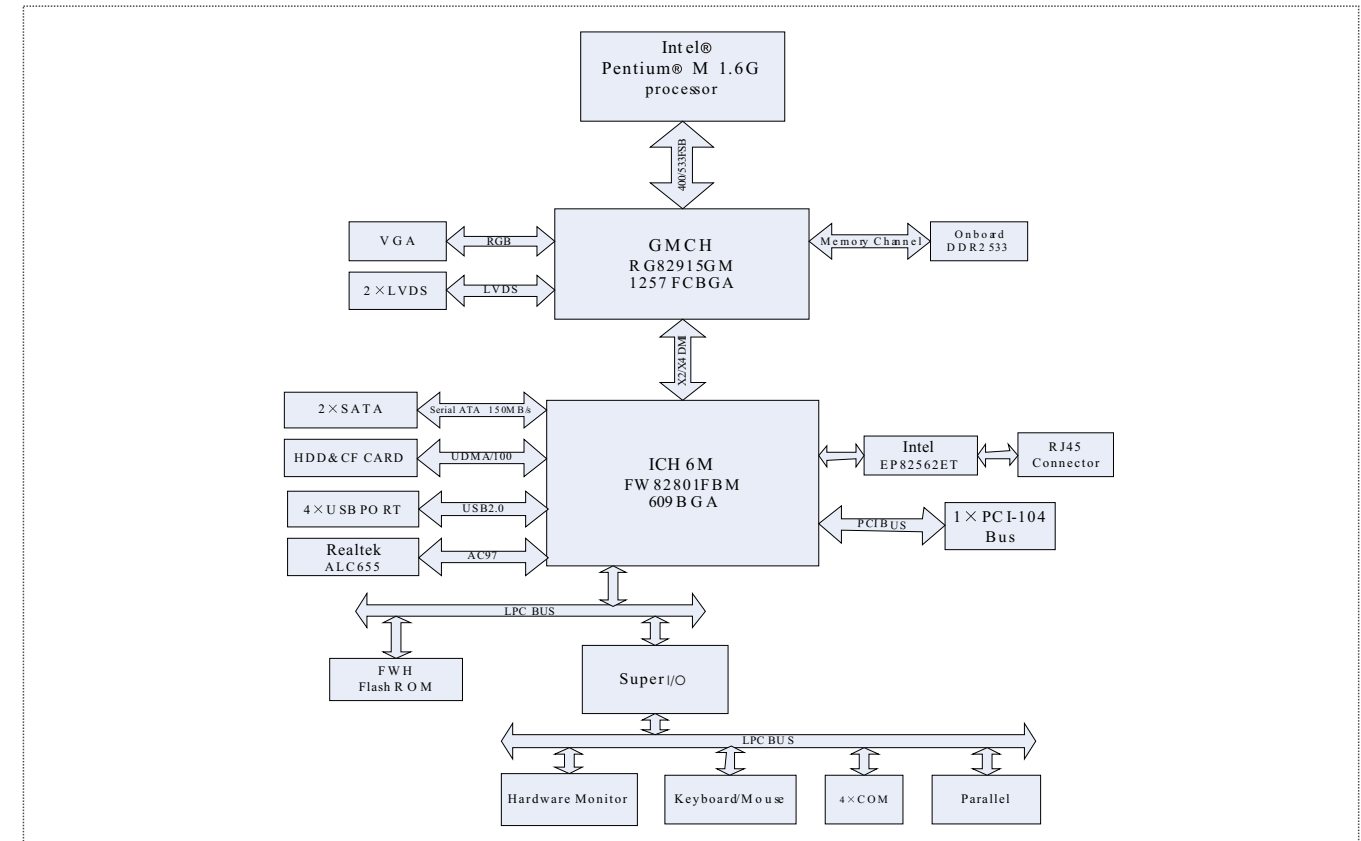
- Onboard Pentium® M 1.6GHz processor, optional Celeron® M 600MHz
- Onboard 256MB DDR2 533, optional 512MB and 1GB
- Supports VGA, LVDS independent dual display
- 1 x PCI-104 expansion bus, 1 x 10/100Mbps Ethernet controller
- Supports 4 x USB2.0, 4 x COM (2 x 20-pin port), 1 x IDE, 2 x serial ATA, 1 x LPT, 1 x CF, 1 x VGA, 2 x LVDS, 1 x PCI-104

## Specifications

System	
Processor	Onboard Pentium® M 1.6GHz processor, optional Celeron® M 600MHz
Chipset	Intel® 915GME+ICH6-M
Memory	Onboard 256MB DDR2 533 memory, optional 512MB and 1GB
Hardware Monitor	Monitors CPU temperature, voltage and watchdog timer, etc.
Watchdog Timer	1~255 sec./min. timer system reset/interrupt, setup by software
Expansion Interface	1 x PCI-104
Storage	
IDE	One 40-pin Ultra ATA100/66/33 interface
Serial ATA	2 x Serial ATA 150MB/s interface
Floppy	N/A
CF	1 x CompactFlash Socket Type I/II
DOC/DOM	N/A
I/O Interface	
USB	4 x USB2.0 port, available interface of 2 x 9-pin header onboard
Serial Port	1 x RS-232/485, 3 x RS-232, available interface of 2 x 20-pin header onboard
Parallel Port	1 x LPT
IrDA	N/A
GPIO	N/A
Audio	AC'97, onboard Realtek ALC655, available interfaces of Speaker-out, Line-in and Mic-in

Display	
Chipset	Intel® 915GME integrated graphics controller
Memory	128MB shared memory
Resolution	VGA mode up to 2048 x 1536@75Hz or 1600 x 1200@85Hz LVDS mode up to 1600 x 1200@18bit
Dual Display	Supports VGA , LVDS independent dual display
Ethernet	
Chipset	Intel® EP82562ET
Speed	10/100Mbps
Connector	1 x RJ 45
Mechanical and Environmental	
Dimensions	203mm x 146mm
Operating Temperature	-20°C~60°C
Storage Temperature	-25°C~75°C
Operating Humidity	5%-90%, non-condensing
Power	
Power Supply	Supports ATX power supply
Power Consumption	Typical 5.35W (ATX, Celeron M 600MHz, 256MB DDR2 533) Typical 10.8W (ATX, Pentium M 1.6GHz, 256MB DDR2 533)
Operating System	
Windows OS	Windows 2000/ Windows XP
Embedded OS	Linux/XP Embedded/WinCE

## Board Diagram



## Available Accessories

Part Number	Name	Description	Qty.
2330-000041	Jumper/RoHS	2.54mm pitch, blue	4
2360-000591	Audio cable/RoHS	Three audio jacks to one 2x5 Pin connector (2.54mm pitch), length: 550mm/RoHS	1
2360-000831	Y-cable for keyboard and mouse/RoHS	PS/2 port connector to 2x4 Pin, length: 300mm/RoHS	1
2360-002571	Dual USB ports with bracket/B4/RoHS	Two USB ports to one 2x5 Pin, length: 210mm/RoHS	1
2360-005051	Parallel port cable/RoHS	Parallel port cable, DB25 connector to 26 Pin, length: 300mm/RoHS	1
2360-006731	VGA cable/RoHS	DB15 connector (female) to 2x8 connector (female), length: 300mm	1
2360-008331	HDD flat cable/RoHS	DMA66/HDD/CABLE/40P/80-line/length: 450mm	1
2360-017041	LAN cable/RoHS	RJ45 connector to 2x5 Pin connector, length: 300mm/EC5-1717CLDNA	1
2360-017961	SATAHDD cable/RoHS	SATA7 Pin to SATA7 Pin with elbow connector, length: 550mm/RoHS	1
2360-018641	Parallel flat cable/RoHS	9 Pin D-shell cable connector (2.54mm pitch) to 40 Pin connector, length: 300mm/V0	1
—	Setup Guide/RoHS	AMI/BIOS Setup Guide (for CORE8)	1
—	User's Manual/RoHS	EC5-1717CLDNA(B)	1
—	CD/burning	EC5-1717CLDNA(B)	1

## Related Product

Item	Typical Recommendation
PC/104 Expansion Card	104-P8COM, 104-VGAEL, 104-4LAN
Power Supply	ATX

## Ordering Information

Part Number	Model Number	Description
0030-011591	EC5-1717CLDNA/English version	Motherboard/English version/RoHS
0030-001750	EC5-1717CLDNA	Motherboard
0030-001790	EC5-1717CLDNA-TA	Motherboard/TA
0030-001800	EC5-1717CLDNA/1GB	Motherboard/1GB
0030-001770	EC5-1717CLDNA/512M	Motherboard/512M
0030-012680	EC5-1717CLDNA/512M/no CF socket	Motherboard/512M/no CF socket
0030-011590	EC5-1717CLDNA/English version	Motherboard/English version