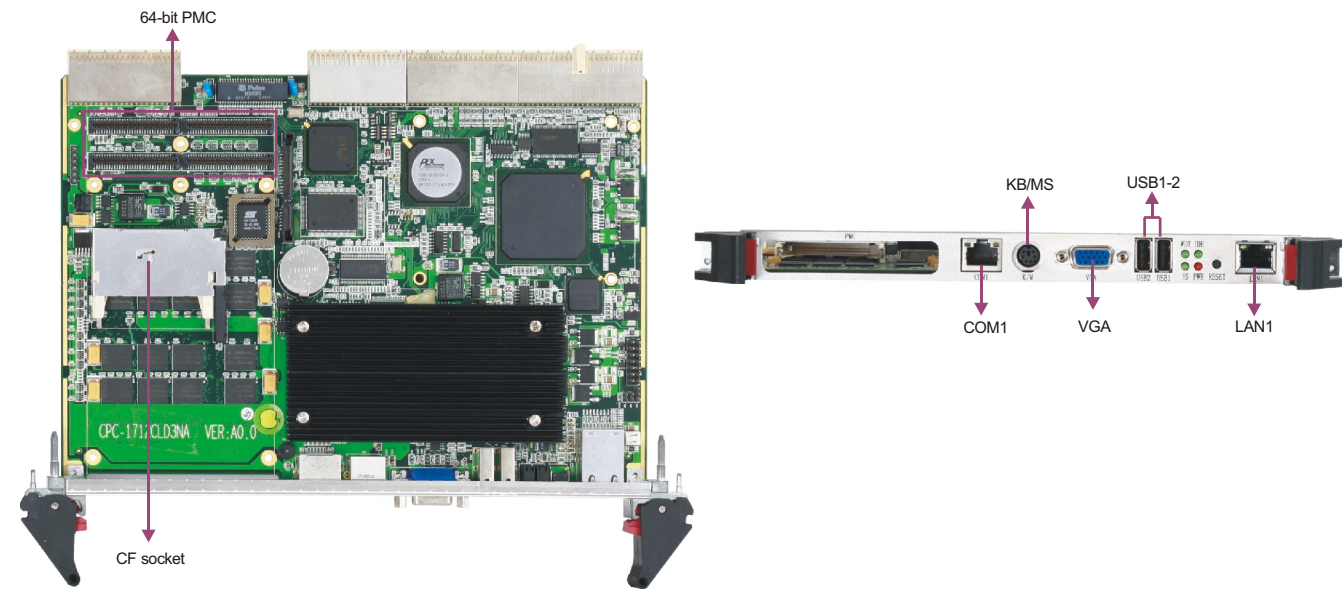


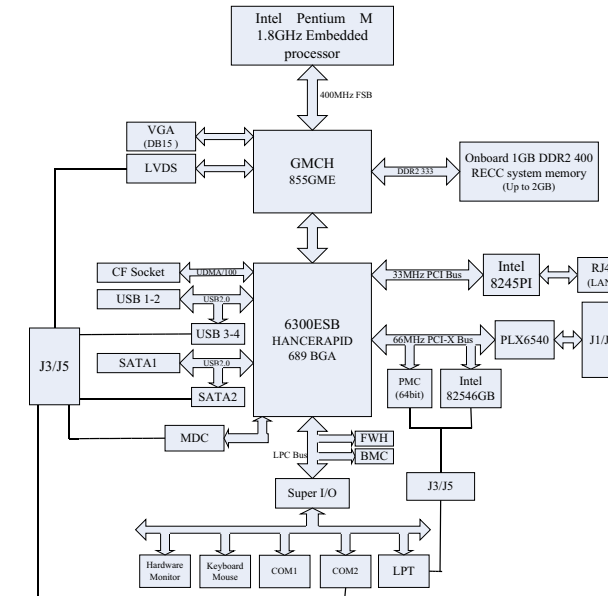
CPC-1712CLD3NA



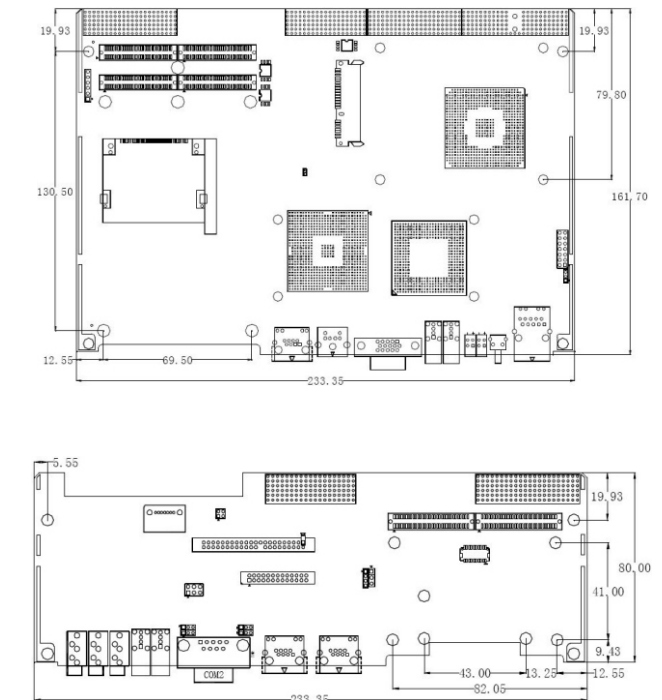
Intel® Pentium® M CompactPCI Boards with VGA/LVDS/CF/3GbE/Audio



Board Diagram



Dimensions



1

Full-Size/Half-Size Slot CPU Cards

2

SBC/Motherboard/Modules

3

Embedded Box PC

4

Network Application Computers

5

Industrial PC

6

HMI

7

EVOC Rugged Series

8

MCC Series

9

Chassis

10

Data Acquisition Boards & Modules

11

Accessories

1

Full-Size/Half-Size Slot CPU Cards

2

SBC/Motherboard/Modules

3

Embedded Box PC

4

Network Application Computers

5

Industrial PC

6

HMI

7

EVOC Rugged Series

8

MCC Series

9

Chassis

10

Data Acquisition Boards & Modules

11

Accessories



Features

- Onboard Intel® Pentium® M 1.8G processor
- Onboard 1GB DDR 333 ECC system memory
- Supports 3 x Intel® 10/100M/1000Mbps Ethernet Interface
- Supports CRT + LVDS dual independent display
- PICMG 2.16 Packet Switching specification compliant
- PICMG 2.5 R1.0 H.110 CompactPCI Computer Telephony Specification compliant
- PICMG 2.1 R2.0 Hot Swap specification compliant
- PICMG 2.0 R3.0 CompactPCI specification compliant
- Selectable 6U rear I/O board: CPC-RP702

Specifications

System

Processor	Onboard Intel® Pentium® M 1.8G embedded processor, with 2M cache and 400MHz FSB	
Chipset	Intel® 855GME + 6300ESB	
Memory	Onboard 1GB DDR 333 ECC memory, supporting up to 2GB of DDR ECC system memory	
Hardware Monitor	Monitors system status, voltage, temperature and fan speed etc.	
Watchdog Timer	1~255 sec./min. timer system reset or interrupt, setup by software	
Standard	64-bit CompactPCI expansion bus. Compliant with PICMG2.0 R3.0, PICMG2.1 R2.0, PICMG2.3 R1.0, PICMG2.5(R1.0 H.110), PICMG2.11 R1.0, PICMG2.16, PICMG2.9, IPVMI 2.0	

Storage Interface

	CPC-1712CLD3NA	CPC-RP702
Serial ATA	Onboard 1 x 2.5 SATA hard disk interface (15-pin power supply and 7-pin signal connector)	1 x Serial ATA 150MB/s interface
IDE	N/A	1 x 44-pin Ultra ATA100 interface
CF	1 x CompactFlash socket	N/A

I/O Interface

USB	2 x USB2.0 port	2 x USB2.0 port
Serial Port	1 x RS232(RJ45 port)	1 x RS232/422/485 (DB9 port)
Parallel Port	N/A	1 x 26-pin parallel interface
PMC	1 x 64-bit PMC	N/A
Display Port	1 x VGA	1 x VGA, 1 x LVDS(LCD for option)
Audio	N/A	Onboard 1 x Realtek ALC655, supporting AC'97
KB/MS	1 x PS/2	1 x PS/2(KB/MS) port

Ethernet

Chipset	1 x Intel® 82541PI GbE Controller (PCI), 1 x Intel® 82546GB dual port GbE Controller (PCI-X)	N/A
Connector	1 x RJ45 port (Intel® 82541PI)	2 x RJ45 Giga port (Intel® 82546GB)

Display

Chipset	Intel® 855GME integrated 2D/3D graphics controller
Memory	Up to 64MB shared system memory
Resolution	VGA mode up to 1600 x 1200 @85Hz or 2048 x 1536@75Hz
	Supports 12-bit/18-bit or dual 12-bit LVDS display interface
Dual Display	Supports CRT + LVDS dual independent display

Mechanical and Environmental

Dimensions	CPC-1712CLD3NA: 233mm(6U) x 160mm(D) x 4HP(1-slot width) CPC-RP702: 233mm(6U) x 80mm(D) x 4HP(1-slot width)
Operating Temperature	-40°C ~ 60°C
Storage Temperature	-45°C ~ 80°C
Operating Humidity	5%~95%, non-condensing

Power

Power Supply	Supports CPCI and ATX power supply
Power Consumption	Typical 39W (CPU: Onboard Pentium® M 1.8GHz, System Memory: Onboard 1G DDR ECC)

Operating System

Windows OS	Windows 2000/Windows XP
Embedded OS	Linux

Available Accessories

Part Number	Name	Description	Qty.
2192-006231	Driver CD/Protective film/RoHS	CPC-1712CLD3NA/VER:A1	1
2330-000011	Jumper/SHINNING/ROHS	Pitch: 2.0mm, black, sealed tail	4
2330-000041	Jumper/RoHS	2.54mm pitch, blue	2
2360-005031	KM cable/RoHS	One Mini-DIN port to two PS/2 ports, length: 250mm/RoHS	1
2360-005711	COM conversion cable/ROHS	RJ45 to COM(male), length: 550	1
2412-000331	Setup Guide/RoHS	AMI/BIOS Setup Guide (for Core/8)/VER:A1	1
2413-013521	User Manual/Chinese/RoHS	CPC-1712CLD3NA/VER:A2	1
2391-004681	Copper hex Screws/RoHS	M3 x 6-4/CH-M3-6-4-Ni	4
2391-000391	Screw/RoHS	Pan head M3 x 5/GB-T818-1985/nickel plating	4

Related Product

Item	Typical Recommendation
CPCI Chassis	CPC-8202, CPC-8203, CPC-8402, CPC-8403, CPC-8404
Rear I/O Board	CPC-RP702

Ordering Information

Part Number	Model Number	Description
0030-003250	CPC-1712CLD3NA	(YF) Motherboard
0030-007480	CPC-1712CV2N/1.6G/conformal coating	Motherboard
0030-007640	CPC-1712CLD3NA/conformal coating	Motherboard
0030-010080	CPC-1712CLD3NA/no CF card	Motherboard
0030-014210	CPC-1712CLD3NA-B	Motherboard
0030-014220	CPC-1712CLD3NA-B/no CF card	Motherboard
0060-001370	CPC-RP702	Rear I/O Board
0060-002060	CPC-RP702/conformal coating	Rear I/O Board