



# BTP-ARINC: ARINC Portable Analyzer

Complete Turnkey Analyzer System for Flight Line Test and Maintenance

## Features

- Real-time display of individual channel labels
- Log 100% of bus traffic to disk and/or memory
- Integrated software/hardware solution
- Flexible real-time displays
- User-defined custom labels, data fields and scaling
- Discrete I/O control
- Multiple boards supported
- Advanced engineering unit conversion with context-sensitive translation
- Control, log, display multiple channels simultaneously
- RoHS/EPEAT Compliant

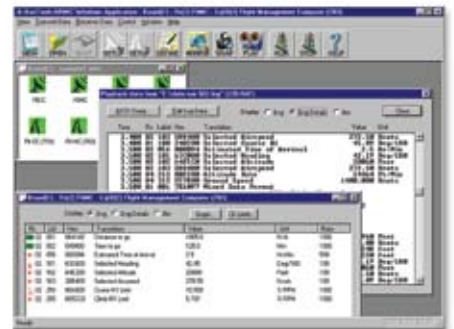
BTP-ARINC is a complete turnkey analyzer comprised of an integrated package with BT-ARINC, an ARINC avionics interface card, a semi-rugged portable computer host, and cables for immediate use with no user hassles around interrupts, driver conflicts, and other integration issues.

## Analysis, Test and Simulation Software

*BusTools/ARINC* is GE Intelligent Platforms' advanced, easy-to-use application solution for ARINC 429, 561 6-wire, 573, 717 and CSDB databus test and simulation. By harnessing the power of GE Intelligent Platforms' family of intelligent interfaces for PC platforms, *BusTools/ARINC* provides exceptional flexibility for the control, generation, display, recording and playback of protocol data. From an intuitive GUI interface, quickly configure GE Intelligent Platforms' Systems ExpressCard hardware. Create and transmit messages, display real-time data, chart variables, log all traffic to disk and replay logged data.

GE Intelligent Platforms' advanced engineering unit conversion system streamlines data entry and simplifies traffic analysis. Standard ARINC 429-16 label conversions are provided, and you can easily create/import/export custom equipment ID/label databases. Use custom labels with one or more BCD, BNR, discrete or bit-encoded fields. New context-sensitive

translation provides even more flexibility when these standard and customized data field names, units and conversion factors are used for analysis and data entry.



# BTP-ARINC: ARINC Portable Analyzer



Filter by Label, SDI and Channel



Real-time and Historical Charting

## BusTools/ARINC Features

### Meaningful Real-time Data Displays

- Engineering unit, use-defined, hex or binary displays
- User-formatted charts – scrolling or historical
- View data by individual channel or merged together
- Custom labels with discrete descriptors and split fields
- Easy-to-use label and/or SDI filtering
- Multiple views – channel, label, value, units, rate, SSM, SDI
- Automated dropped label and data limit checking

### Flexible, User-defined Fields

- Display meaningful data with advanced engineering unit conversion
- Create custom Equipment ID/label databases
- Divide data words into BCD, BNR, discrete and user-bit-encoded fields
- Use custom databases for all display and entry
- Split data words can utilize multiple scale factors and Context-Sensitive Translation

### Data Logging (Analysis)

- Log all received (filtered) data to disk and/or memory
- Display in engineering units, discrete descriptors and bit-encoded values
- Merged playback display of all channels
- Replay logged data over databuses (editor available)

### Simulation/Control

- Icon-driven GUI interface controls Rx and Tx
- Enter data in same engineering units, hex or binary, as displayed
- Create/edit individually scheduled messages while receiving and transmitting
- Save and restore test configurations with user notes
- Control/monitor I/O discretes

## Ordering Information

**BTP-ARINC-74-W** Semi-rugged Portable Analyzer, ARINC 429, 7 Rx, 4Tx, IRIG RX and TX

## Related Products

**RAR-EC** RoHS Dual Port ARINC 429 ExpressCard Interface

**BT-ARINC** ARINC 429 Bus Analysis & Data Logging software for Windows (multi-function boards only)

## ExpressCard Features

- ARINC 429 dual port interface, up to 7 Rx and 4 TX channels
- ExpressCard/54 extended module

## Connections

- Cabling to 37-pin D-type receptacle connector provided with mechanical retention
- Optional IRIG-B synchronization In/Out (AM or DC/TTL)

## Semi -Rugged Computer Host Features

- Shock-mounted, removable hard drive
- Drop and spill-resistant
- Operation environment temp: 5°C to 35°C
- Storage environment temp: -20°C to 60°C
- Lithium ion battery pack
- AC adapter: AC 100V-240V 50/60Hz, auto sensing/switching worldwide power supply
- Battery status reporting

## About GE Intelligent Platforms

GE Intelligent Platforms, a General Electric Company (NYSE: GE), is an experienced high-performance technology company and a global provider of hardware, software, services, and expertise in automation and embedded computing. We offer a unique foundation of agile, advanced and ultra-reliable technology that provides customers a sustainable advantage in the industries they serve, including energy, water, consumer packaged goods, government and defense, and telecommunications. GE Intelligent Platforms is a worldwide company headquartered in Charlottesville, VA and is part of GE Home and Business Solutions. For more information, visit [www.ge-ip.com](http://www.ge-ip.com).

## GE Intelligent Platforms Contact Information

Americas: **1 800 433 2682** or **1 434 978 5100**

Global regional phone numbers are listed by location on our web site at [www.ge-ip.com/contact](http://www.ge-ip.com/contact)

[www.ge-ip.com](http://www.ge-ip.com)

