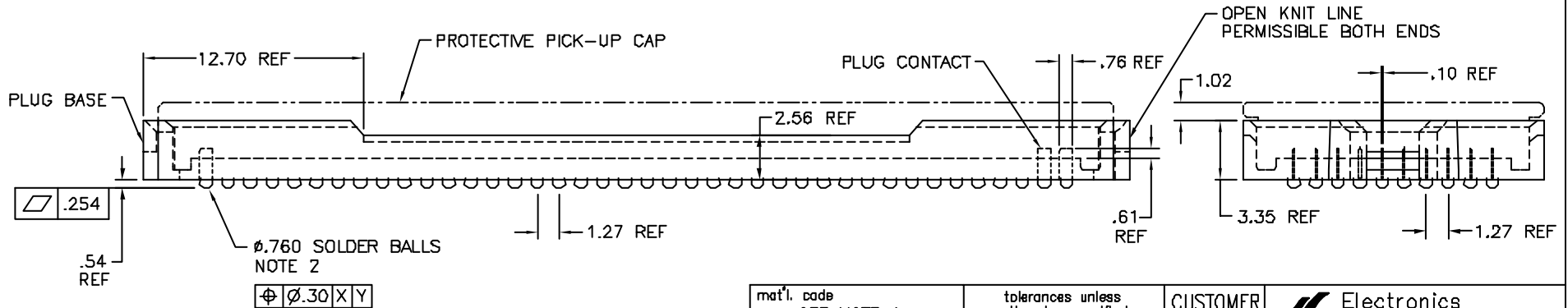
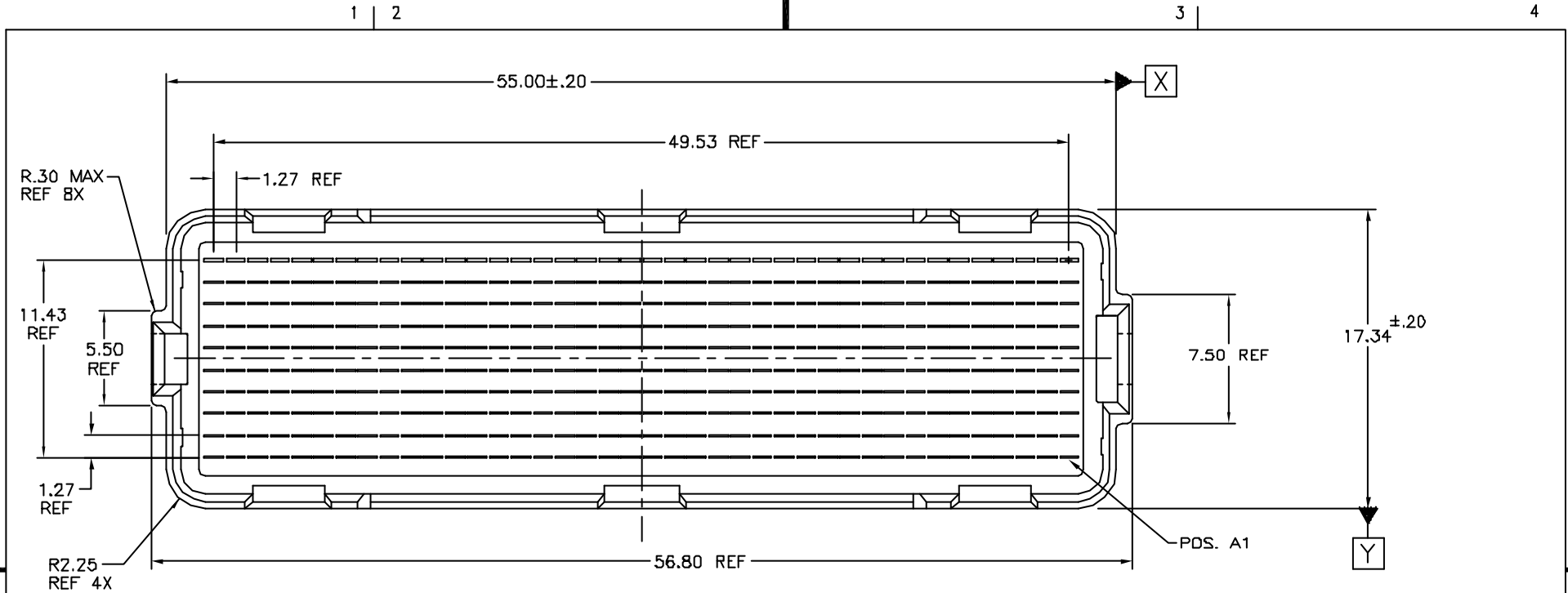


Tous droits strictement réservés. Reproduction ou communication à des tiers interdite sous quelque forme que ce soit sans autorisation écrite du propriétaire. Propriété de FCI. Droits de reproduction FCI.

All rights strictly reserved. Reproduction or issue to third parties in any form whatever is not permitted without written authority from the proprietor. Property of FCI. Copyright FCI.



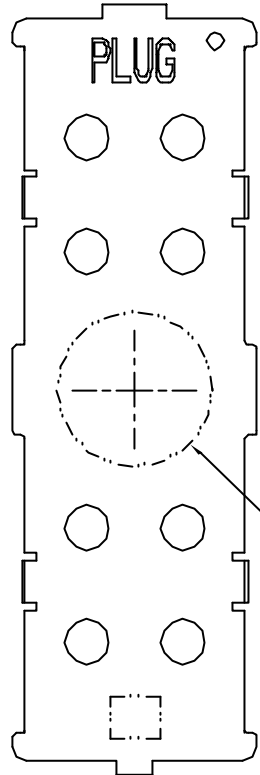
mat'l. code SEE NOTE 1				tolerances unless otherwise specified		CUSTOMER COPY	Electronics www.fciconnect.com
ltr	ecn no	dr	date	linear	.X ±.3		
B	V00104	DRW	1/7/00		.XX ±.13		Omm PLUG ASSY 10 x 40 = 400 POS.
C	V00181	HLJ	8/11/00		.XXX ±.051		
D	V20006	DRW	1/8/02	angles	σ ±2°	mm	product family MEG-ARRAY
E	V20486	DRW	3/12/02	dr	D.WAUGHEN	9.18.98	code
F	V21254	DAI	07/30/02	enagr	M.HAHN	9.18.98	size
G	V03-0881	DAI	06/23/03	chr	M.HAHN	9.18.98	dwg no
H	VD4-0940	VS	10/18/04	appd	M.HAHN	9.18.98	213
sheet	revision	H	H	H			sheet
index	sheet	1	2	3			1 of 3

cage code  
22526

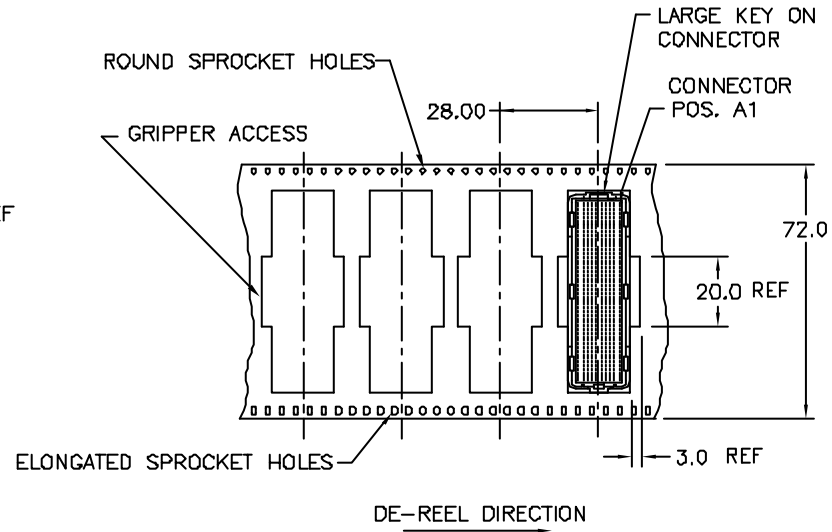
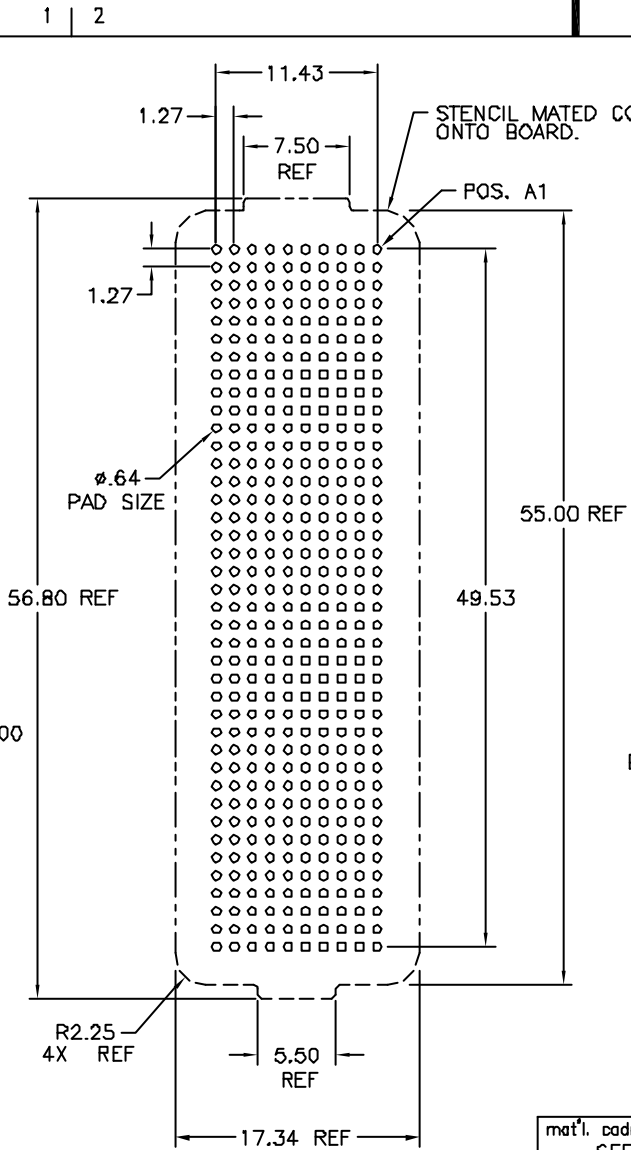
A(A)

Tous droits strictement réservés. Reproduction ou communication à des tiers interdite sous quelque forme que ce soit sans autorisation écrite du propriétaire. Propriété de FCI. Droits de reproduction FCI.

All rights strictly reserved. Reproduction or issue to third parties in any form whatsoever is not permitted without written authority from the proprietor. Property of FCI. Copyright FCI.



VACUUM AREA FOR PICK UP CAP



TAPE & REEL PACKAGING SCALE NONE PER EIA 481-3

mat'l. code SEE NOTE 1				tolerances unless otherwise specified		CUSTOMER COPY		Electronics www.fciconnect.com	
ltr	ecn no	dr	date	linear	.X ±.3	projection	title		
H					.XX ±.13		0mm PLUG ASSY. 10x40= 400 POS.		
				angles	.XXX ±.051		product family	MEG-ARRAY	
				dr	D.WAUGHEN 9.18.98	mm	size	dwg no	
				engr	M.HAHN 9.18.98		A4		code
				chr	M.HAHN 9.18.98		84740		213
				appd	M.HAHN 9.18.98	scale	2:1		sheet
sheet	revision								2 of 3
index	sheet								

cage code  
22526

A(CA)

Tous droits strictement réservés. Reproduction ou communication à des tiers sans autorisation écrite du propriétaire. Propriété de FCI. Droits de reproduction FCI.

All rights strictly reserved. Reproduction or issue to third parties in any form whatsoever is not permitted without written authority from the proprietor. Property of FCI. Copyright FCI.

1 | 2

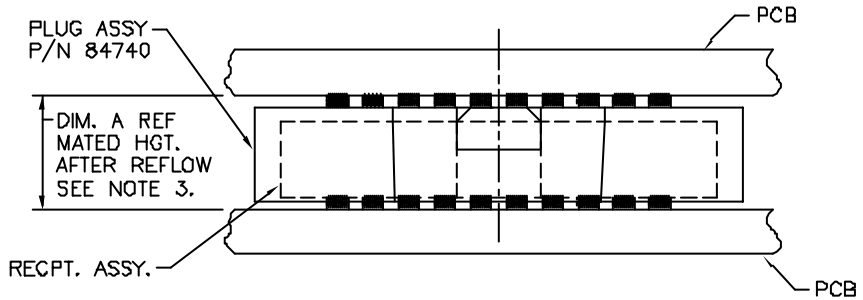
3

4

PRODUCT NUMBER	PICK-UP CAP	CONTACT PLATING	SOLDER BALL
84740-002	YES	15u" (.38um) Au OVER Ni	SnPb
84740-002LF			SnAgCu LEAD FREE (6)(7)
84740-102	YES	30u" (.76um) Au OVER Ni	SnPb
84740-102LF			SnAgCu LEAD FREE (6)(7)
84740-202	YES	SEE MATED HEIGHT TABLE (BELOW)	SnPb
84740-202LF			SnAgCu LEAD FREE (6)(7)

NOTES:

- ①. **MAT'L:**  
HOUSING: LCP  
CONTACT: COPPER ALLOY  
**PLATING:**  
CONTACT: (SEE TABLE ON SHEET3)  
SOLDER BALL: (SEE TABLE ON SHEET3)  
EUTECTIC SnPb OR LEAD FREE  
95.5Sn/4Ag/0.5Cu
- ②. SOLDER BALLS WILL NOT BE PERFECT SPHERICAL SHAPE DUE TO REFLOW ATTACHMENT.
- ③. MATED HEIGHT EFFECTED BY CUSTOMER'S PCB PAD SIZE, PLATING, SOLDER REFLOW PROFILE, & SOLDER PASTE.
- ④. PLATING FOR INDICATED -2XX SERIES PART NOS. MEETS THE REQUIREMENTS OF NORTEL NPS2529B-2 (CENTRAL OFFICE ENVIRONMENT, 25 YEAR LIFE EXPECTANCY).
- ⑤. PLATING FOR INDICATED -2XX SERIES PART NOS. IS Au OVER Ni WITH SPECIAL CONTACT GEOMETRY TO MEET REQUIREMENTS OF TELCORDIA GR-1217-CORE: CENTRAL OFFICE ENVIRONMENT.
- ⑥. FOR PROPER APPLICATION FOLLOW FCI APPLICATION SPECIFICATION GS-20-033 LEAD FREE SOLDER BALLS WILL NOT SOLDER PROPERLY IN A LEADED SOLDER PROCESS DUE TO A HIGHER REFLOW TEMPERATURE. LEAD FREE PRODUCT IS THEREFORE NOT BACKWARDS COMPATIBLE WITH LEADED OR SOME SOLDERING APPLICATIONS. REFERENCE FCI APPLICATION SPECIFICATION
- ⑦. THIS PRODUCT MEETS EUROPEAN UNION DIRECTIVES AND OTHER COUNTRY REGULATIONS AS DESCRIBED IN GS-22-008 PRODUCT MEETING THIS DIRECTIVE IS IDENTIFIED IN THE LOT CODE NUMBER MARKED ON EACH PART BY HAVING AN "X" IN THE SEVENTH CHARACTER POSITION



DIM. A	RECPT. ASSY. P/N	-2XX PLATING
4.0	74221	SEE NOTE 4
6.0	74388	SEE NOTE 5
8.0	74390	SEE NOTE 5

MATED HEIGHT AFTER REFLOW IS BASED ON  $\phi$  .64mm PAD (METAL-DEFINED) AND .13mm SOLDER PASTE STENCIL THICKNESS. SEE NOTE 3.

END VIEW - MATED CONNECTORS SCALE NONE

mat'l. code SEE NOTE 1				tolerances unless otherwise specified		CUSTOMER COPY		 www.fciconnect.com	
ltr	ecn no	dr	date	linear	.X ±.3	projection		title	
H					.XX ±.13			0mm PLUG ASSY. 10x40= 400 POS.	
					.XXX ±.051			product family	code
				angles	$\sigma \pm 2^\circ$	mm		size	dwg no
				dr	D.WAUGHEN 9.18.98	scale	2:1	A4	84740
				engr	M.HAHN 9.18.98				213
				chr	M.HAHN 9.18.98				sheet
				appd	M.HAHN 9.18.98				3 of 3
sheet index	revision sheet								

1 | 2

3

4

A(CA)

PDM: Rev:H

STATUS: Released

Printed: Nov 19, 2004

cage code  
22526