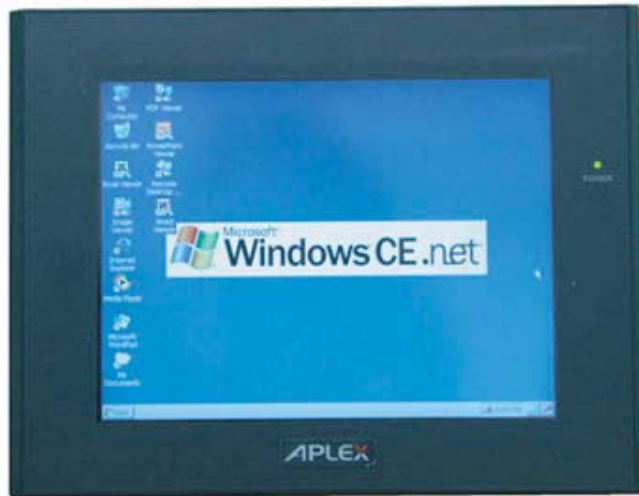


HMI Controller

8" Industrial Fanless Touch Panel Computer

AHM-6081

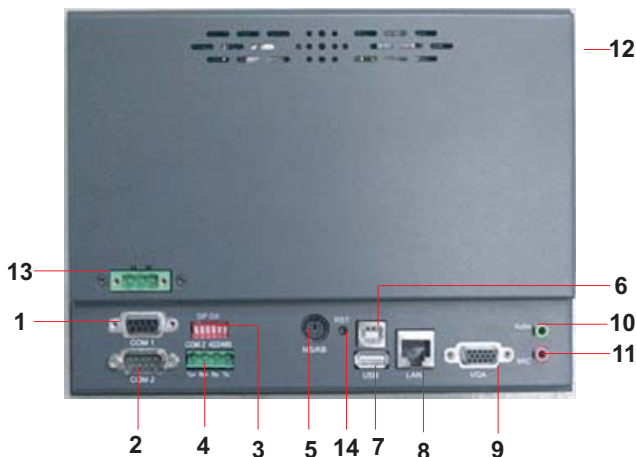


DESCRIPTION

The AHM-6081 comes with the most reliable and stable design as it includes a fanless and low-power consumption CPU for embedded solution. Thus, it is suitable for such applications as transportation, etc. as it can withstand vibration. In addition, it is bundled with Windows CE.NET, which forms a bridge that lets the AHM-6081 be an open HMI solution for system integration. Several interfaces, such as USB, RS-232/422/485, Ethernet, etc., are also available.

FEATURES

- Fanless and low-power consumption Intel Xscale PXA255 CPU
- 8" SVGA color TFT LCD
- Windows CE.net(ver.4.2) 32Mbyte flash memory onboard
- Slim and compact size design
- Fanless and CompactFlash Type I/II card
- NEMA 4/IP65 compliant front panel
- USB 1.1 host and 1.1 client supported
- Sealed resistive touch screen
- The OS supports multi-language



- 1 COM1 (RS-232/422/485) DB9 female connector
- 2 COM2 (RS-232) DB9 male connector
- 3 DIP-SW
- 4 COM2 (RS-422/485) 4P terminal
- 5 PS/2 port for keyboard or mouse
- 6 USB client 1.1 for ActiveSync
- 7 USB host 1.1
- 8 Ethernet port (RJ-45) (10/100 Base-T)
- 9 VGA output interface
- 10 One Mic in
- 11 One Speaker out
- 12 CompactFlash slot
- 13 DC 24V power input, 0.8A (maximum)
- 14 Software reset button

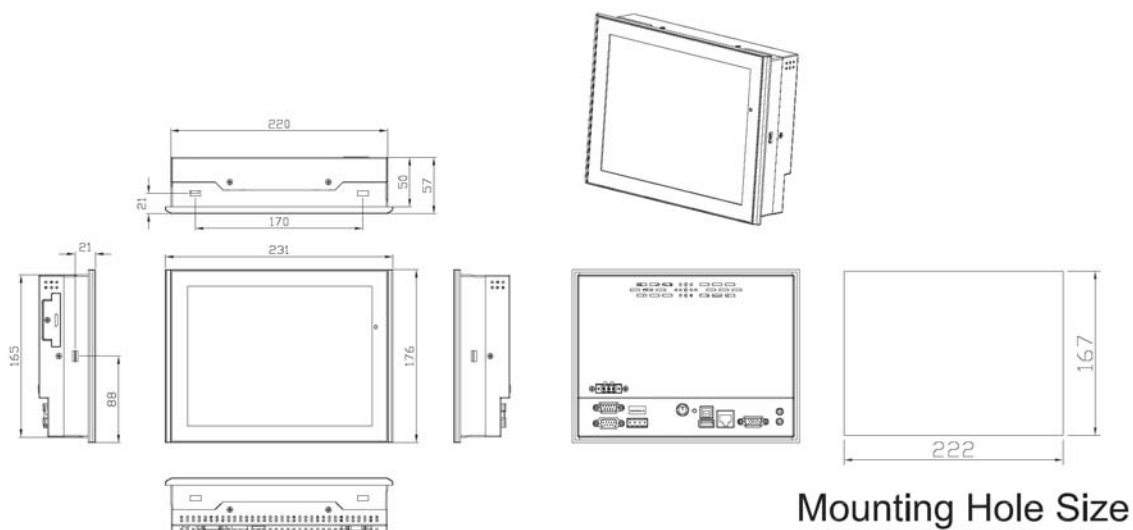
* The interpretation of the numerals is found on the right side of this page.

HMI Controller

8" Industrial Fanless Touch Panel Computer

AHM-6081

Dimensions



Display Specifications

Display	8" TFT LCD
Luminance	400 cd/m ²
Viewing Angle	130 degrees (R/L)
Resolution	800x600
Backlight	CCFL x 1

General Specifications

Construction	Plastic molding housing
Front Panel Color	Black
CPU	Intel Xscale PXA255, 400MHz
Touch Screen	4-wire analog resistive type
Power Input	0.8A at 12/24V DC
I/O Connectors	COM1 (RS-232/422/485) COM2 (RS-232) PS/2 port for keyboard or mouse USB Client 1.1 and Host 1.1 Ethernet port External VGA port Speaker out x 1/Mic-in x 1 DC 24V power input CF slot
Memory Bank	128MB DRAM 1MB SRAM with battery backup 32MB Flash for operating system CF slot for application software
Dimensions	231(W) x 50(D) x 176mm(H)
Weight	1.4kg/3.09 lbs

Environment Specifications

Operating Temperature	0~50 degrees C
Storage Temperature	-20~60 degrees C
Relative Humidity	10%~90% @ 50 degrees C, non-condensing
Vibration	5~17, 0.1" double amplitude displacement, 17~640Hz, 1.5G acceleration peak to peak
Shock	10 to 25Hz (X,Y,Z direction) 2G, 30 minutes
Ratings	NEMA 4/IP65 compliant front panel
Certifications	CE and FCC Class A

Ordering Information

AHM-6081 8" RISC-based Human Machine Interface w/resistive touch screen