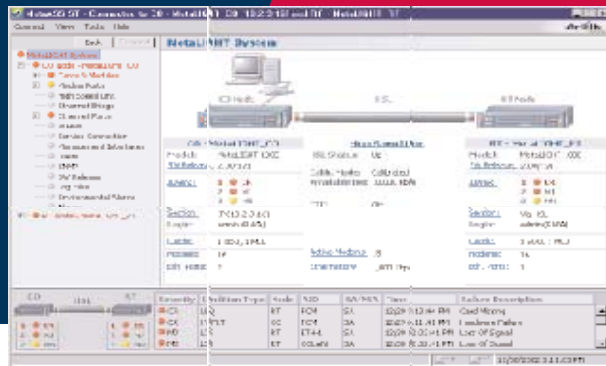


# MetaASSIST™

*Profit from Copper™*



Actelis Networks' MetaASSIST management system is a sophisticated Java-based software application that provides seamless integration and management of the MetaLIGHT® product family in carrier environments. MetaASSIST enables simple and user-friendly operations for complete administration, maintenance and provisioning (OAM&P) of Actelis Networks' MetaLIGHT products.

MetaASSIST provides an intuitive graphical user interface (GUI) for conveniently managing both MetaLIGHT systems which form the link, in addition to the built-in command line interface (TL1). The GUI makes installation and management of the MetaLIGHT systems straightforward for all users. MetaASSIST also includes several step-by-step procedures that guide the user in performing multi-task operations during the installation and start-up of MetaLIGHT systems.

MetaASSIST supports secure:

- Configuration
- Fault monitoring
- Performance monitoring

## Management Interfaces and Protocols

MetaASSIST communicates with the MetaLIGHT systems through the following communications interfaces:

- **Serial RS232** - communications rate and protocol as supported by this interface
- **IP** - connection through the Ethernet interfaces, either locally or remotely over the IP network

MetaASSIST allows users to communicate locally via the Craft port or remotely via a TCP/IP connection on any of the out-of-band or in-band interfaces. Using an RS232 or IP interface, the MetaASSIST can manage a pair of MetaLIGHT nodes.

The management channel to the remote MetaLIGHT system is carried in-band over multiple copper pairs which form the High Speed Link™ (HSL™).

## Features

### Top-Level Information Displayed

MetaASSIST graphically displays the complete MetaLIGHT system along with status information for each CO, HSL and RT element. Both CO and RT nodes can be simultaneously configured and managed. Links to individual views of each component of the system gives the user quick and easy access to detailed information.

### User Friendliness

MetaASSIST is easy to operate. Actions and operations are intuitive and can be activated easily from the various management views provided by the program. On-Line Help significantly reduces the training time needed for a new operator to become familiar with MetaASSIST and the result is quicker and simpler turn-up of a MetaLIGHT system saving field engineering costs.

### Reduces Downtime

MetaASSIST reduces system downtime by enabling effective management based on a clear and immediate view of the whole link and its condition.

### Flexible Software and Architecture

MetaASSIST has been designed with a software architecture that allows it to be easily updated to accommodate new services and command languages.

### On-Line Help

MetaASSIST On-Line Help contains clear explanations of the various functions available to manage, configure and monitor MetaLIGHT systems. For example, users can use the help feature to get started with MetaASSIST, to perform initial setup procedures, software update procedures, to configure various system elements and other tasks.

## Highlights

- MetaLIGHT System Management
- Secure Configuration
- Fault Management
- Performance Management
- Top-Level Information Graphically Displayed
- Simple to Install and Use
- Minimizes Downtime
- Flexible Software and Architecture
- Java-Based
- On-Line Help Features

## Platform Features

### Fault

The MetaASSIST fault management system allows easy access to information on MetaLIGHT faults. Fault management features include:

- Real-time visual alarm display
- Color-coded alarm severity levels
- User-defined alarm severity levels
- Alarm status with periodic polling
- Environmental alarms management
- History log of active and cleared alarms
- Autonomous reports selective masking

### Configuration

The MetaASSIST configuration management system offers a comprehensive view of the MetaLIGHT configuration and resource availability including system (node, redundancy), equipment (shelf, cards and modules), facilities (service ports, modems, external clocks), services (Ethernet, TDM service connections, bridges, VLANs, HSL), management interfaces, SNMP parameters, user-logs and software administration. Configuration features include:

- Hierarchical presentation of MetaLIGHT systems
- Auto detection and real-time display of configuration changes
- Tools to ease setup and software upgrade procedures
- Remote software download via FTP, TFTP or HTTP
- Command line interfaces
- Configuration back-up and restore

### Performance

The MetaASSIST performance management system offers network managers the ability to monitor the MetaLIGHT performance over time including:

- Retrieval and display of standard traffic parameters for DS3 service; DS1 service; and HSL over current, 15-minute and previous-day intervals
- Standard Ethernet statistics
- Copper pairs qualification data

### Security

The MetaASSIST Security management system includes the following features:

- Identification - user name
- Authentication - password check
- System Access Control - login/logout/automatic logout after a period of inactivity
- Resource Access Control - Three levels of user access privileges (Read, Write and Administrator)
- Security Administration - management of users

### TL1 View and Log

MetaASSIST allows a user to manually enter individual TL1 commands and view the responses.

Also, MetaASSIST log files collect autonomous messages transmitted between MetaLIGHT systems and MetaASSIST. Logs can assist the user in locating possible causes of faults in the MetaLIGHT system.

### Specifications

Hardware Platform (Minimum Requirements)

- CPU: Personal Computer (desktop or notebook) with Pentium processor 133MHz or higher
- Memory: Recommended 64MB, minimum 32MB RAM
- Disk: Recommended 64MB, minimum 40MB
- Screen: Supported Screen Resolutions: 800x600, 1024x768 and 1280x1024

### Operating System

- Windows 95/98/2000/Windows NT version 4.0 and higher

### Interfaces

- Out-of-band management - Via craft terminal, modem or Ethernet management port
- In-band management - Via Ethernet service port

### Capacity

- System Administrator can define up to 20 users per MetaLIGHT node