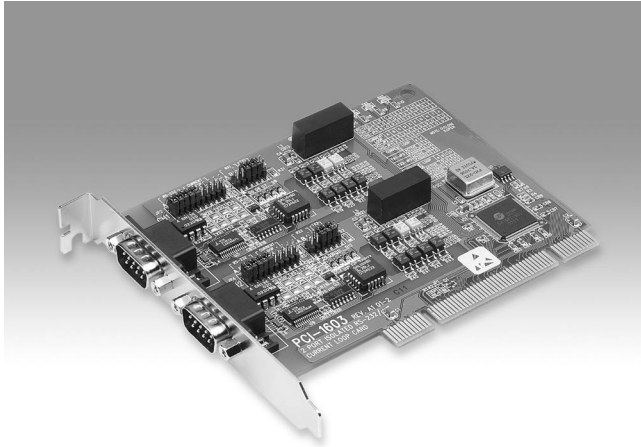


PCI-1603

2-port Isolated RS-232/Current-loop PCI Communication Card



Features

- Two independent RS-232 or Current-loop serial ports
- Each port can individually configured to RS-232 or current-loop
- 16PCI952 FIFO UART (128-byte FIFO)
- PCI bus specification 2.2 compliant
- Speeds:
RS-232: 50 ~ 230.4 Kbps
Current-loop: 57.6 Kbps
- I/O address automatically assigned by PCI plug-and-play
- OS supported: Windows 95/98/NT/2000/XP, Linux
- Interrupt status register for increased performance
- Powerful and easy-to use utility: ICOM Tools

Introduction

The PCI-1603 offers a versatile range of high speed interfacing options. You can switch its ports between the popular RS-232 or noise-resistant current-loop. The card utilizes 16PCI952 UARTs with 128-byte FIFO buffer for faster and more reliable communication, especially under multi-tasking environments such as Windows.

The PCI-1603 provides two isolated RS-232 or current-loop serial ports. You can configure each port individually to RS-232 or current-loop using on-board jumpers.

The card utilizes 16PCI952 UART that buffers data into packets before sending it to the bus. This drastically reduces CPU load and avoids data loss when the system is busy and cannot process an interrupt quickly. These FIFO buffers make the PCI-1603 especially suitable for high speed serial I/O under Windows.

Onboard optical isolators protect your PC and equipment against damage from ground loops, increasing system reliability in harsh

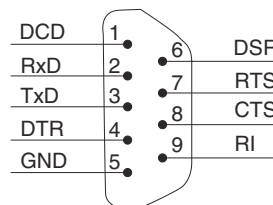
Specifications

- Bus Interface** PCI bus spec. 2.2 compliant
- PCI Interface** PCI Universal card
- All ports use the same IRQ assigned by PCI plug-and-play**
- Data Bits** 5, 6, 7, 8
- Stop Bits** 1, 1.5, 2
- Parity** None, even, odd
- Communication Controller** 16PCI952
- Speed** RS-232: 50 bps ~ 230.4 Kbps
Current Loop: 50 bps ~ 57.6 Kbps
- Data Signals** RS-232: TxD, RxD, RTS, CTS, DTR, DSR, DCD, RI
Current Loop: Tx+, Tx-, Rx+, Rx-
- Power Requirement** +5 V (250 ~ 300 mA)
- Isolation Protection** 3,000 V_{DC} for RS-232 and current-loop
- Dimensions** 123 x 92 mm
- Operating Temperature** 0 ~ 65° C (refer to IEC 68-2-1, 2) (32 ~ 149° F)
- Operating Humidity** 5 ~ 95% Relative Humidity, non-condensing (refer to IEC 68-2-3)
- Storage Temperature** -25 ~ 85° C (-13 ~ 185° F)

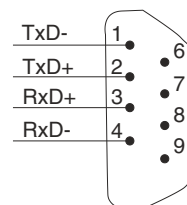
Current-loop Interface

- Signal Driver/receiver** 6N136
- Signals** TxD+, TxD-, RxD+, RxD-
- Current Value** 20 mA (Standard)
- Mode** Asynchronous, full duplex
- Baud-rate** 50 ~ 57600 bps
- Transmission Distance** 1000 m

Pin Assignments



RS-232



Current-loop

Ordering Information

- PCI-1603** 2-port Isolated RS-232/current-loop PCI Comm. Card

1
IPPC & AWS

2
TPC

3
FPM

4
ATM

5
DA&C

6
cPCI

7
ADAM-3000

8
eConnectivity

9
ICOM

10
Software

11
UNO-2000/3000

12
VBOX

13
ADAM-4000

14
ADAM-5000

15
ADAM-6000

16
ADAM-8000