



BusTools/ARINC

Features

- Real-time display of individual channel labels
- Log 100% of bus traffic to disk and/or memory
- Integrated software/hardware solution
- Flexible real-time displays
- User-defined custom labels, data fields and scaling
- Discrete I/O control
- Multiple boards supported
- Advanced engineering unit conversion with context-sensitive translation
- Control, log, display multiple channels simultaneously

Powerful Hardware

- Available for:
 - PCI (CEI-520/520A//530/830-X/R830RX-X)
 - CompactPCI (CEI-620/830-3/R830RX-3)
 - PCMCIA (CEI-715)
 - ExpressCard (RAR-EC)
 - PC/104 (CEI-420/420A)
 - PC/104 Plus (CEI-430)
 - PC/AT (CEI-220)
 - PA-100 platforms
- Control up to 32 simultaneous channels per board
- Windows® XP, 2000, NT supported

Analysis, Test and Simulation Software

BusTools/ARINC is GE Intelligent Platforms' advanced, easy-to-use application solution for ARINC 429, 561 6-wire, 573, 717 and CSDB databus test and simulation. By harnessing the power of GE Intelligent Platforms' family of intelligent interfaces for PC platforms, BusTools/ARINC provides exceptional flexibility for the control, generation, display, recording and playback of protocol data. From an intuitive GUI interface, quickly configure GE Intelligent Platforms PCI, CompactPCI, PCMCIA, PC/AT and PC/104 hardware. Create and transmit messages, display real-time data, chart variables, log all traffic to disk and replay logged data.

GE Intelligent Platforms' advanced engineering unit conversion system streamlines data entry and simplifies traffic analysis. Standard ARINC 429-16 label conversions are provided, and you can easily create/import/export custom equipment ID/label databases. Use custom labels with one or more BCD, BNR, discrete or bit-encoded fields. New context-sensitive translation provides even more flexibility when these standard and customized data field names, units and conversion factors are used for analysis and data entry.



BusTools/ARINC

BusTools/ARINC Features

Meaningful Real-time Data Displays

- Engineering unit, use-defined, hex or binary displays
- User-formatted charts – scrolling or historical
- View data by individual channel or merged together
- Custom labels with discrete descriptors and split fields
- Easy-to-use label and/or SDI filtering
- Multiple views – channel, label, value, units, rate, SSM, SDI
- Automated dropped label and data limit checking

Flexible, User-defined Fields

- Display meaningful data with advanced engineering unit conversion
- Create custom Equipment ID/label databases
- Divide data words into BCD, BNR, discrete and user-bit-encoded fields
- Use custom databases for all display and entry
- Split data words can utilize multiple scale factors and Context-Sensitive Translation

Data Logging (Analysis)

- Log all received (filtered) data to disk and/or memory
- Display in engineering units, discrete descriptors and bitencoded values
- Merged playback display of all channels
- Replay logged data over databuses (editor available)

Simulation/Control

- Icon-driven GUI interface controls Rx and Tx
- Enter data in same engineering units, hex or binary as displayed
- Create/edit individually scheduled messages while receiving and transmitting
- Save and restore test configurations with user notes
- Control/monitor I/O discretes



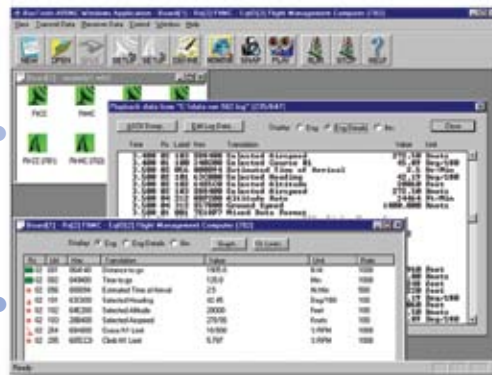
Filter by Label, SDI and Channel



Real-time and Historical Charting

Topology Window

Real-time Label Displays



Display logged data with custom labels, engineering units, discrete descriptors and user bit-encoding.

Ordering Information

BT-ARINC

BusTools/ARINC GUI software for Bus Analysis, Simulation and Data Logging. Windows XP/2000/NT.

About GE Intelligent Platforms

GE Intelligent Platforms, a General Electric Company (NYSE: GE), is an experienced high-performance technology company and a global provider of hardware, software, services, and expertise in automation and embedded computing. We offer a unique foundation of agile, advanced and ultra-reliable technology that provides customers a sustainable advantage in the industries they serve, including energy, water, consumer packaged goods, government and defense, and telecommunications. GE Intelligent Platforms is a worldwide company headquartered in Charlottesville, VA and is part of GE Home and Business Solutions. For more information, visit www.ge-ip.com.

GE Intelligent Platforms Contact Information

Americas: 1 800 433 2682 or 1 434 978 5100

Global regional phone numbers are listed by location on our web site at www.ge-ip.com/contact

www.ge-ip.com

