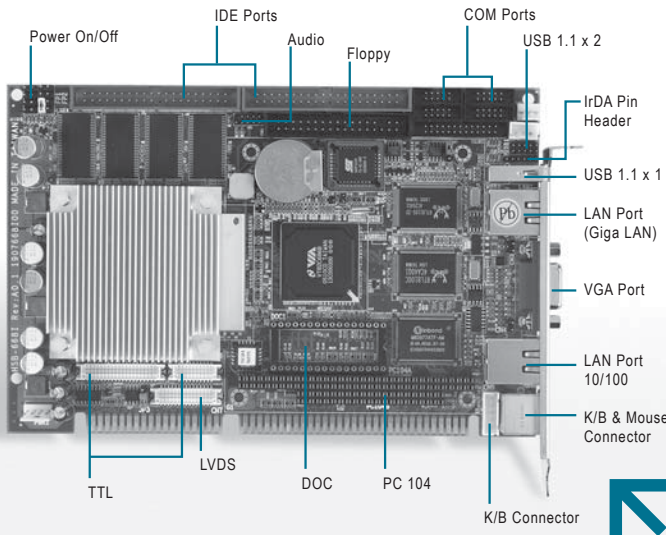


## Onboard VIA Mark CoreFusion 533MHz Processor



### Features

- Onboard VIA CoreFusion 533MHz Processor, 128MB SDRAM
- One SODIMM SDRAM, Memory Up To 512MB
- Integrated ProSavage4 Graphic, 2D/3D VGA Support
- 2 Channel 36-bit LVDS LCD Support
- 10/100Mb Base-TX Ethernet x 2 (10/100 & GbE x 1 Optional)
- Integrated AC97 Codec Audio (Daughter Board Optional)
- USB 1.1 x 3/ RS-232 x 3, RS-232/422/485 x 1/ Parallel x 1/ IrDA Port x 1
- DOC2000 PC-104 Interface Socket
- Ultra ATA100 Channel x 2
- Watchdog Function 1 ~ 255 Sec.
- ISA High-driver Support



### Specifications

System	
Form Factor	ISA Half-size SBC
Processor	Onboard VIA Mark CoreFusion 533MHz CPU
System Memory	144-pin 3.3V SODIMM Socket x 1, up to 512MB onboard 128MB memory, supports PC 133 types
Chipset	Mark + VT82C686B
Ethernet	10/100Mb or 10/100/1000Mb LAN optional, RJ-45 x 2, Realtek 8100C/8110S controller
BIOS	Award Plug & Play ISA BIOS – 2Mb ROM
IDE Interface	ATA-100 (Support four ATAPI devices) x 2
SSD	DOC 2000 support
Expansion Interface	ISA interface/ PC-104
Watchdog Timer	1~255 Sec. can be set with software
RTC	Internal RTC
Battery	Lithium battery
Power Requirement	+5V only, Mini 4pin power connector
Operating Temperature	32°F ~ 140°F (0°C ~ 60°C)
Board Size	7.3" (L) x 4.8" (W) (185 mm x 122 mm)
Gross Weight	0.7 lb (0.3 kg)
MTBF (Hours)	82,470
Power Consumption (Typical)	14W, Onboard VIA Mark 533 MHz
Display	
	Supports CRT and LCD simultaneous display
VGA Controller	Integrated on Mark
Memory	32MB frame buffer share system
Resolutions	Up to 1600x1200@32bpp colors for CRT Up to 1280x1024@24bpp colors for LCD
LCD Interface	Up to 36-bit LVDS/ TTL LCD support
I/O	
	I/O Chipset: VT686B + Winbond 83977ATF
Serial Port	COM port x 4: (Internal Pin Header, External D-sub x 2) COM 1, 3, 4: RS-232 COM 2: RS-232/422/485 (Pin 9 support +5V by Jumper)
Parallel Port	Parallel Port supports SPP/ EPP/ ECP mode x 1
Universal Serial Bus	USB 1.1 port x 3 5 x 2 pin header x 1 Type A connector x 1
Floppy Drive Interface	Standard Floppy Disk Drive x 1
Keyboard and Mouse	Mini-DIN PS/2 K/B and Mouse connector x 1 Internal keyboard pin header x 1
IR Interface	Supports IrDA and CIR header x 1
Audio (Daughter Board)	AC97 Codec, MIC-in/ Line-in/ Line-out/ CD-in

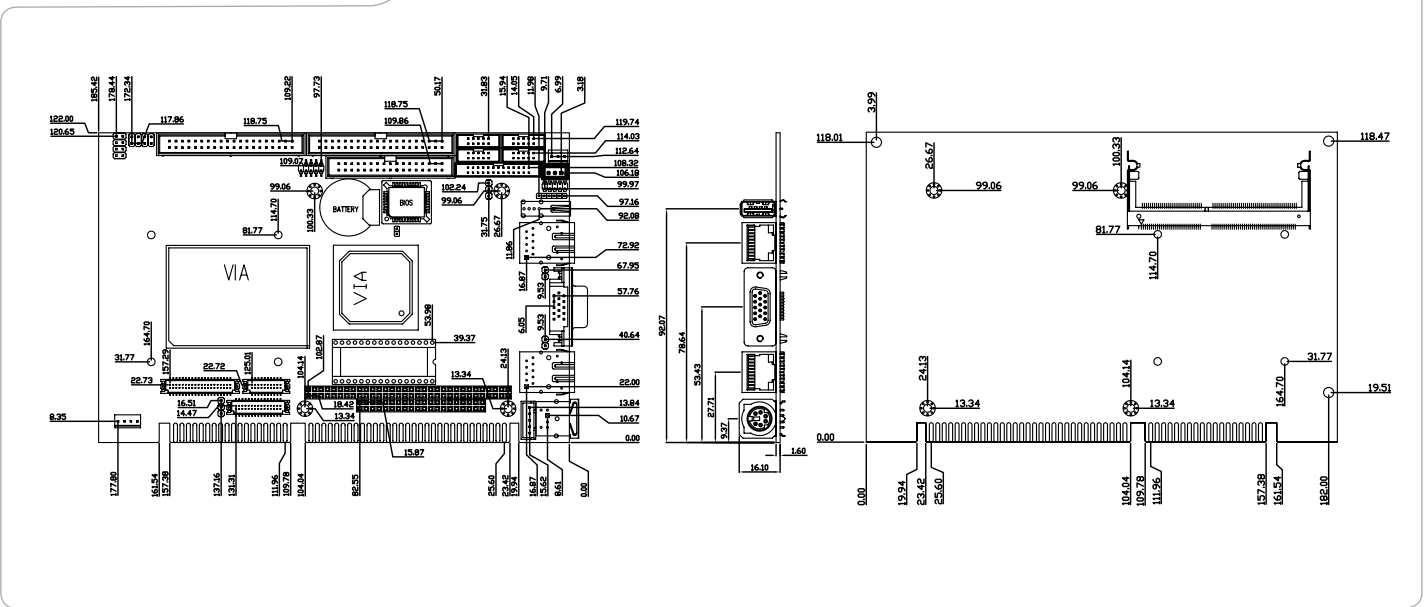
### Packing List

- 1701340704  
Floppy Cable
- 1701400453  
ATA-100 Cable
- 1709100201  
USB Cable
- 1700060192  
Keyboard Cable
- 1701010305  
Serial + Parallel Cable
- 1703030501  
ATX Cable
- 1701260307  
2 Serial Cables
- 170110030A  
Serial Cable
- Quick Installation Guide
- Utility CD
- HSB-668I

### Ordering Information

- **TF-HSB-668I-A10-VE**  
Half-size ISA SBC, VIA Mark 533M CPU, 128MB SDRAM, VGA, 1 LAN, 3 USB, LVDS, DOC2000, AC97, Rev. A1.0
- **TF-HSB-668I-A10-VG**  
Half-size ISA SBC, VIA Mark 533M CPU, 128MB SDRAM, VGA, Gbe LAN, 3 USB, DOC2000, AC97, Rev. A1.0
- **TF-HSB-668I-A10-E2**  
Half-size ISA SBC, VIA Mark 533M CPU, 128MB SDRAM, VGA, 2 LANs, 3 USB, LVDS, DOC3200, Rev. A1.0
- **TF-HSB-668I-A10-EG**  
Half-size ISA SBC, VIA Mark 533M CPU, 128MB SDRAM, VGA, 1 10/100 LAN, 1 Gbe LAN, 3 USB, LVDS, DOC2000, Rev. A1.0
- **TF-HSB-668I-A10-V**  
Half-size ISA SBC, VIA Mark 533M CPU, 128MB SDRAM, VGA, 3 USB, LVDS, DOC2000, Rev. A1.0

## Dimension Unit: mm



## Passive Backplane Options

P/N	Description	Master Interface	Slots (PCI/ISA/PICMG)	Power Connector, ATX Extend Function
TF-BP-204SI-A13	Wallmount, ISA 4-slot Backplane, 4 ISA Single Segment, AT, Rev.A1.3	ISA	(0/4/0)	AT
TF-BP-206SI-A11	Wallmount, ISA 6-slot Backplane, 6 ISA Single Segment, AT/ATX, Rev.A1.1	ISA	(0/6/0)	AT/ATX
BP-208SI-A00	Wallmount, ISA 8-slot Backplane, 8 ISA Single Segment, AT, Rev.A0.0	ISA	(0/8/0)	AT
BP-214SI-V61	Wallmount, ISA 14-slot Backplane, 14 ISA Single Segment, AT, Rev.A0.0	ISA	(0/14/0)	AT