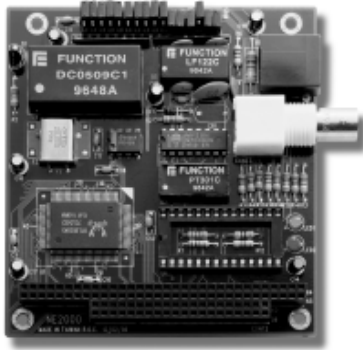


Em104-LAN10R

NE2000 LAN Module



Features

- Chipset RTL 8019AS
- Full Duplex transfer mode
- NE2000 compatible with 16 KB RAM

Em104-LAN10R is a high performance, NE2000 compatible, Ethernet adapter. Em104-LAN10R connects to twisted pair (10BASE-T) and coax (10BASE-2) media. It includes a 16 KB RAM buffer for fast and reliable network transmission

Chipset Realtek 8019AS single chip
Full-duplex transfer mode, doubles effective bandwidth

NE2000 compatible with built in 16 KB RAM buffer

Jumper select, Jumperless or Plug&Play mode

Media

BNC (10BASE-2) or RJ-45 (10BASE-T), auto

Throughput

10 Mbps

IRQ

2 (9), 3, 4, 5, 10, 11, 12 or 15

I/O address

200h, 220h, 240h, 260h, 280h, 2A0h, 2C0h, 2E0h, 300h, 320h, 340h, 360h, 380h, 3A0h, 3C0h, 3E0h

Boot ROM address

C800, CC00, D000, D800, DC00, 8/16-bit data bus autosensing, Built-in boot ROM function

Power Consumption

single 5V @ 120 mA

Operating temperature

0 ~ +55°C

Ordering Information

Em104-LAN10R

PC/104 NE2000 LAN Module

Em104-Modem/56K

PC/104 Modem Module



Features

- Data modem throughput up to 115.2Kbps
- Conexant RC56D Chipsets
- Error correction & data compression

Specifications

Chipset: Conexant RC560

ISA Bus Interface

Data modem throughput up to 115.2Kbps

V.90, K56Flex, V.34, V.32bis, V.32, V.23, V.22bis, V.22, Bell 212A/Bell 103

Fax modem send and receive rates up to 14400bps

Error Correction & Data Compression

MNP2-4(ALT), V42(LAPM)

Voice/Audio mode

2M Flash ROM

FDSP (Full-Duplex speakerphone)

Hardware & Software flow control

Programmable volume control

Stores 2 configuration profiles

Stores up to 4 telephone numbers

2W Leased line function

V 80 Video phone

Ordering Information

Em104-Modem/56K

PC/104 Modem Module