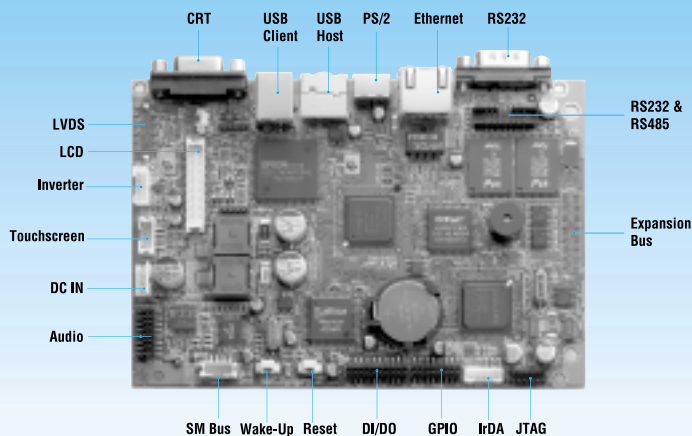


PCM-7130 / 7131

3.5" Ready-to-Run SBC with Intel® StrongARM CPU, 3 COMs, Ethernet VGA/LCD and Touchscreen



Features

- Compact size: 145 x 102 mm
- Low power consumption and fanless
- 32/64 MB DRAM and 16/32 MB flash memory on board
- Windows® CE on board (on the flash memory)
- Supports LCD, touchscreen, audio, IrDA and Ethernet
- 100-pin external bus for user module

Display



Display	PCM-7130-1200CE(CE Standard Version)	PCM-7130-1100LX(LX Standard Version)	PCM-7131-1100CE(CE Compact Version)
LCD TTL Interface	18-bit active color LCD/ 16-bit passive color LCD	18-bit active color LCD/ 16-bit passive color LCD	18-bit active color LCD
LCD LVDS Interface	18-bit LVDS interface	18-bit LVDS interface	X
TouchScreen Interface	4-wire resistive touchscreen interface	4-wire resistive touchscreen interface	4-wire resistive touchscreen interface
Resolution	Up to 800 x 600 @ 16 bpp	Up to 800 x 600 @ 16 bpp	Up to 800 x 600 @ 16 bpp

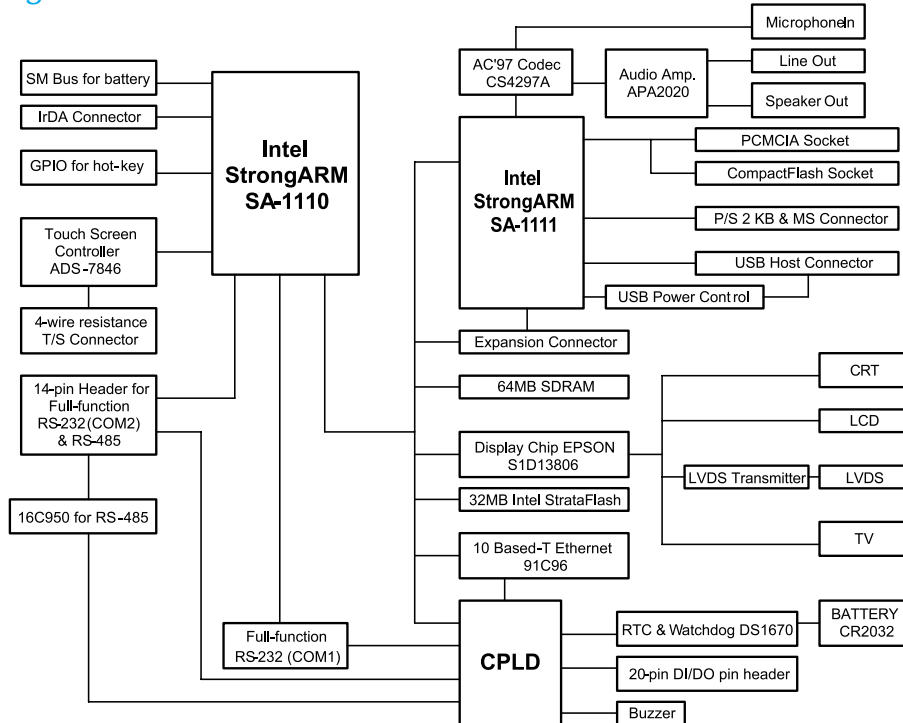
System

System	PCM-7130-1200CE(CE Standard Version)	PCM-7130-1100LX(LX Standard Version)	PCM-7131-1100CE(CE Compact Version)
CPU	SA-1110	SA-1110	SA-1110
Companion Chip	SA-1111	SA-1111	SA-1111
SDRAM (MB)	64	32	32
Flash (MB)	32	16	16
Audio	AC'97 audio interface	AC'97 audio interface	X
Buzzer	Buzzer for alarm	Buzzer for alarm	Buzzer for alarm
SM Bus Interface	SM Bus Interface	SM Bus Interface	SM Bus Interface
Resume Interface	For suspend function	For suspend function	For suspend function
Operating System			
Windows® CE.NET	Windows® CE.NET 4.1 or above	X	Windows® CE.NET 4.1 compact version
Embedded Linux	X	Embedded Linux kernel V.2.4.18 or above	X

I/O

I/O Port	PCM-7130-1200CE(CE Standard Version)	PCM-7130-1100LX(LX Standard Version)	PCM-7131-1100CE(CE Compact Version)
Serial Port	Two full-function RS-232 & One RS-485	Two full-function RS-232 & One RS-485	Two full-function RS-232 & One RS-485
IrDA Interface	5-pin connector for IrDA	5-pin connector for IrDA	5-pin connector for IrDA
PCMCIA Slot	One type II PCMCIA slot	One type II PCMCIA slot	One type II PCMCIA slot
CompactFlash Slot	One type II CF slot	One type II CF slot	One type II CF slot
USB Port	One Host USB port/ One Client USB port	One Host USB port/ One Client USB port	One Host USB port/ One Client USB port
DI/DO	8 Digital Inputs/ 8 Digital Outputs	8 Digital Inputs/ 8 Digital Outputs	8 Digital Inputs/ 8 Digital Outputs
GPIOs for Hotkey	8 GPIOs for Hotkey	8 GPIOs for Hotkey	8 GPIOs for Hotkey
CRT	DB15 CRT connector	DB15 CRT connector	DB15 CRT connector
TV-out Interface	Support both NTSC and PAL signals	Support both NTSC and PAL signals	Support both NTSC and PAL signals
Expansion Slot	100-pin expansion bus	100-pin expansion bus	100-pin expansion bus

Board Diagram



Ethernet

Chipset	SMSC91C96
Ethernet Interface	10 Base-T
Connection	RJ45

Mechanical and Environmental

Dimensions(L x W)	145 x 102 mm (5.71" x 4")
Power Consumption	Normal:12V@ 220mA; suspend:12V@ 20mA
Power Input	7-28 VDC
Gross Weight	0.2 kg (0.4 lb.)
Operating Temperature	0 - 75° C (32 - 167° F) fanless operation
Operating Humidity	0 - 90% relative humidity, non-condensing

Packing List

• Support CD	(p/n: 2062000051)
• Windows® CE end user license agreement	(p/n: 2006000012)
• USB client ActiveSync cable	(p/n: 1700041800)
• Y-shaped adapter for PS/2 mouse and keyboard	(p/n: 1700060202)
• Audio cable	(p/n: 1700160163)
• RS-232 and RS-485 combo cable	(p/n: 1701140201)
• Linux support CD (for Linux version)	(p/n: 2062000061)
• JTAG cable (for Linux version)	(p/n: 1703251000)
• Null modem cable (for Linux version)	(p/n: 1700091002)

Ordering Information

For PCM-7130 Model	
PCM-7130-1200CE	3.5" Intel® StrongARM 206 Mhz SBC, 32MB Flash/64MB SDRAM, Windows® CE. NET English on board
PCM-7130-1100LX	3.5" Intel® StrongARM 206 Mhz SBC, 32MB Flash/64MB SDRAM, Linux English on board.
For PCM-7131 Model	
PCM-7131-1100CE	The same as PCM-7130-1200CE without Audio, LVDS and passive LCD supporting but with 32 MB SDRAM, 16 MB flash memory and a compact Windows® CE.NET English on board