

AFO LUX *Panel PC Series*

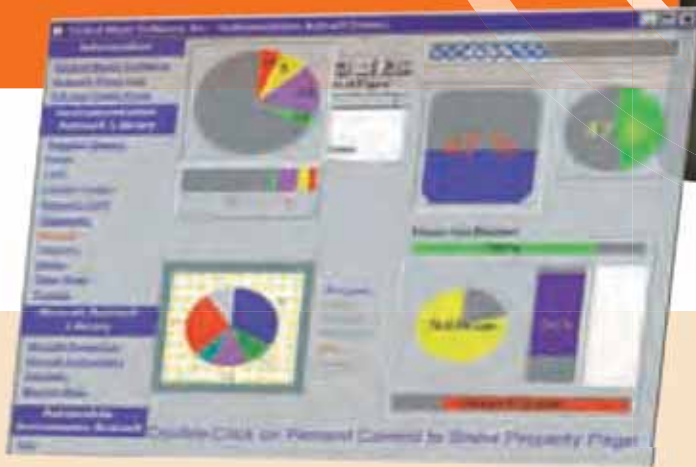
7"-19" All-in-one Panel PC



For POS



For Home Automation



For Industrial Automation



For Car PC

Maximize Your Business Potential

The streamline AFOLUX series all-in-one panel PC offers installation versatility with its wide ranging mounting options that help maximize your business potential



AFOLUX AMD Geode™ LX 800 Series



AFL-07A-LX-R11
Selectable AT/ATX Power Mode

ab CHF 862,-

7"

**7" embedded fanless panel PC
AMD Geode™ LX 800 CPU**

- Resolution: 800x480
- Brightness (cd/m²): 350
- Touch screen
- Integrated audio speakers
- 512 MB memory preinstalled
- Complete I/O support:
 - 1 x RS-232 COM port
 - 1 x RS-232/422/485 COM port
 - 2 x USB 2.0 ports
 - 2 x LAN ports
- 802.11b/g wireless antenna inside
- Preinstalled Bluetooth module
- The best choice for Thin Client, Windows® CE 5.0 and Windows® XP embedded

Vehicle Interior Device

- Car PC
- Transportation logistics PC



AFL-08AH-LX-R11
Selectable AT/ATX Power Mode

ab CHF 1046,-

8.4"



**8.4" embedded fanless panel PC
AMD Geode™ LX 800 CPU**

- Resolution: 800x600
- Brightness (cd/m²): 220/450
- Touch screen
- Integrated audio speakers
- 512 MB memory preinstalled
- Complete I/O support:
 - 1 x RS-232 COM port
 - 1 x RS-232/422/485 COM port
 - 2 x USB 2.0 ports
 - 2 x LAN ports
- 802.11b/g wireless antenna inside
- Preinstalled Bluetooth module
- The best choice for Thin Client, Windows® CE 5.0 and Windows® XP embedded

Industrial Automation

- Manufacturing work flow
- Factory automation
- Environmental monitoring



AFL-10A-LX
Selectable AT/ATX Power Mode

ab CHF 1085,-

10.4"

**10.4" embedded fanless panel PC
AMD Geode™ LX 800 CPU**

- Resolution: 800x600
- Brightness (cd/m²): 400
- Touch screen
- Integrated audio speakers
- 512 MB memory preinstalled
- Complete I/O support:
 - 1 x RS-232 COM port
 - 1 x RS-232/422/485 COM port
 - 2 x USB 2.0 ports
 - 2 x LAN ports
- 802.11b/g wireless antenna inside
- Preinstalled Bluetooth module
- The best choice for Thin Client, Windows® CE 5.0 and Windows® XP embedded

POS Applications

- Mobile inventory checking
- Cashier platform



AFL-12A-LX-R11
Selectable AT/ATX Power Mode

ab CHF 1125,-

12.1"

**12.1" embedded fanless panel PC
AMD Geode™ LX 800 CPU**

- Resolution: 1024x768
- Brightness (cd/m²): 450
- Touch screen
- Integrated audio speakers
- 512 MB memory preinstalled
- Complete I/O support:
 - 1 x RS-232 COM port
 - 1 x RS-232/422/485 COM port
 - 2 x USB 2.0 ports
 - 2 x LAN ports
- 802.11b/g wireless antenna inside
- Preinstalled Bluetooth module
- The best choice for Thin Client, Windows® CE 5.0 and Windows® XP embedded



AFOLUX VIA C7® and Eden™ Series



AFL-15A-CX
Selectable AT/ATX Power Mode

ab CHF 1418,-

15"

15" embedded panel PC
VIA C7® (1.5GHz) CPU with fan or fanless VIA Eden™ (500MHz) CPU

- Resolution: 1024x768
- Brightness (cd/m²): 350
- Touch screen
- Integrated audio speakers
- 512 MB memory preinstalled
- Complete I/O support:
 - 1 x RS-232 COM port
 - 1 x RS-232/422/485 COM port
 - 4 x USB 2.0 ports
 - 2 x LAN ports
- 802.11b/g wireless antenna inside
- Preinstalled Bluetooth module
- The best choice for Thin Client, Windows® CE 5.0 and Windows® XP embedded



AFL-17A-CX
Selectable AT/ATX Power Mode

ab CHF 1499,-

17"

17" embedded panel PC
VIA C7® (1.5GHz) CPU with fan or fanless VIA Eden™ (500MHz) CPU

- Resolution: 1280x1024
- Brightness (cd/m²): 300
- Touch screen
- Integrated audio speakers
- 512 MB memory preinstalled
- Complete I/O support:
 - 1 x RS-232 COM port
 - 1 x RS-232/422/485 COM port
 - 4 x USB 2.0 ports
 - 2 x LAN ports
- 802.11b/g wireless antenna inside
- Preinstalled Bluetooth module
- The best choice for Thin Client, Windows® CE 5.0 and Windows® XP embedded



AFL-19A-CX
Selectable AT/ATX Power Mode

ab CHF 1598,-

19"

19" embedded panel PC
VIA C7® (1.5GHz) CPU with fan or fanless VIA Eden™ (500MHz) CPU

- Resolution: 1280x1024
- Brightness (cd/m²): 300
- Touch screen
- Integrated audio speakers
- 512 MB memory preinstalled
- Complete I/O support:
 - 1 x RS-232 COM port
 - 1 x RS-232/422/485 COM port
 - 4 x USB 2.0 ports
 - 2 x LAN ports
- 802.11b/g wireless antenna inside
- Preinstalled Bluetooth module
- The best choice for Thin Client, Windows® CE 5.0 and Windows® XP embedded

General Computing

- PC based testing center
- Distance learning



Home and Building Automation

- Digital surveillance system
- Home IA control terminal



Self-service Kiosk

- Self registration terminal
- Interactive photo kiosk
- Ticket vending machine
- Price-check machine



Multimedia Applications

- Gaming device
- Advertising terminal
- Real-time news broadcast



Always Connected

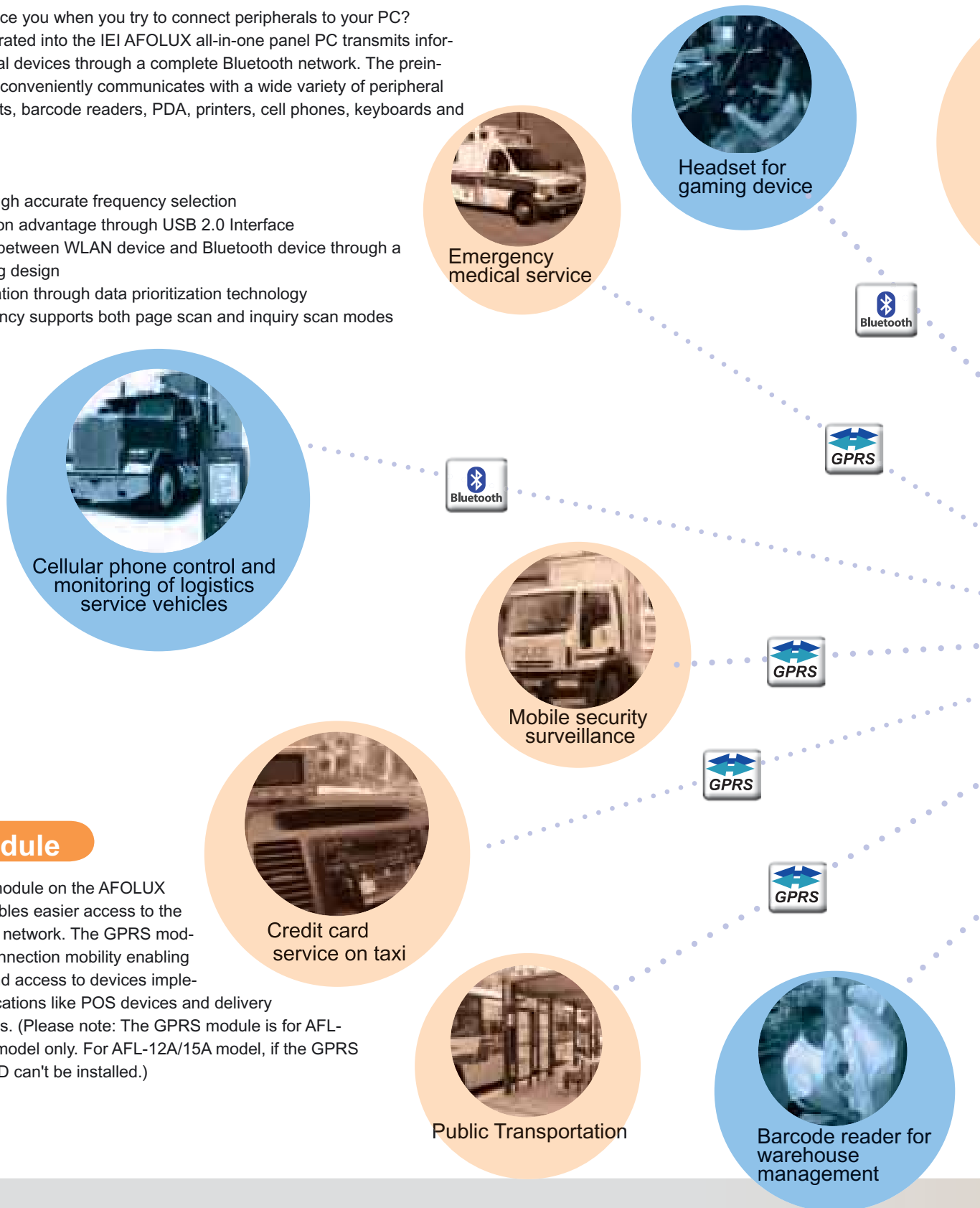
The Value-Added Network Connection



IEI Bluetooth Module

Do wires still inconvenience you when you try to connect peripherals to your PC? A Bluetooth module integrated into the IEI AFOLUX all-in-one panel PC transmits information between peripheral devices through a complete Bluetooth network. The pre-installed Bluetooth module conveniently communicates with a wide variety of peripheral devices including headsets, barcode readers, PDA, printers, cell phones, keyboards and mice.

- Better link quality through accurate frequency selection
- High speed transmission advantage through USB 2.0 Interface
- Direct communication between WLAN device and Bluetooth device through a collaborative coexisting design
- Performance maximization through data prioritization technology
- High connection efficiency supports both page scan and inquiry scan modes



IEI GPRS Module

An optional IEI GPRS module on the AFOLUX all-in-one panel PC enables easier access to the Internet through a GSM network. The GPRS module provides Internet connection mobility enabling centralized control of and access to devices implemented in remote applications like POS devices and delivery service checking devices. (Please note: The GPRS module is for AFL-10A/12A/15A/17A/19A model only. For AFL-12A/15A model, if the GPRS module is used, the HDD can't be installed.)

IEI's Wireless Network Advantage

Wireless Anywhere

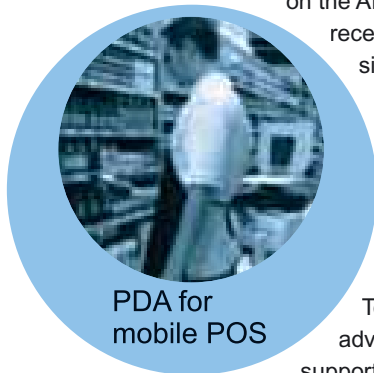
If you are still looking for stable wireless LAN connectivity, the integrated PIFA antenna on the AFOLUX ensures an uninterrupted wireless connection. PIFA type antennas can receive high-quality, uniform signals in any location from all directions without any signal degradation or impedance and are the most efficient antennas on the market today. The inverted F-design generates an omni-directional signal field through an exceptionally uniform 3D signal sphere. PIFA enhances transmission and reception through a special cubic structure to ensure optimum wireless performance.

Dual LAN support

To provide you with an "Always connected" advantage, IEI has implemented dual LAN support along with PIFA wireless technology, reducing the hazard of network collisions and crashes or virus infection. With the AFOLUX series your network connection never fails.



Delivery item checking of logistic service



PDA for mobile POS



Best Reliability

Fanless system

The AMD Geode™ LX 800 and VIA Eden™ processors generate less heat. AFOLUX models with these processors are, while maintaining above-average performance, fanless. Fanless PCs have less down time and extended operational lives as they are not exposed to overheating problems caused by fan failures.

Rugged design

The AFOLUX is directly mounted internally to a metal main frame rather than a fragile plastic cover. In addition, the AFOLUX case is made from ABS/PC (Acrylonitrile Butadiene Styrene/Polycarbonate Alloy), which improves the stiffness over conventional material and makes the system more solid and durable.



Water proof device

PIFA antenna inside



Anti-vibration protection

The AFOLUX panel PC are equipped with a drive kit to increase the resistance of the hard drive to side shocks and vibrations. The drive kit extends the drive life cycle in environments such as vehicles and marine applications.

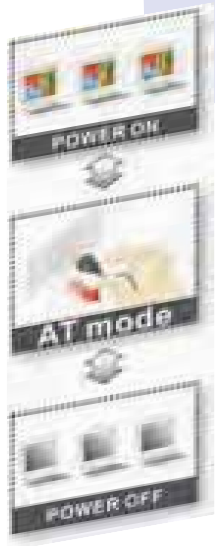
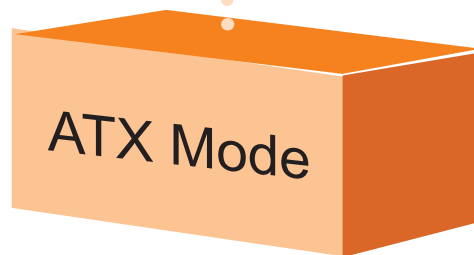
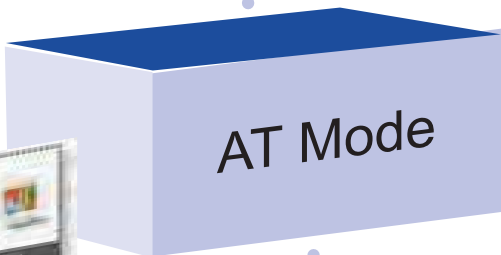
IP 64 dustproof and waterproof front panel

The AFOLUX front panel is IP 64 compliant. IP 64 compliance guarantees the front panel is dustproof and water-proof. The AFOLUX front panel can withstand any industrial environment where dust and drizzle is encountered.

Flexible Power Mode

AT/ATX Mode Selection

AT and ATX power modes can both be used on the AFOLUX all-in-one panel PC series. Power mode flexibility allows you to select the most suitable power mode for your unique application requirements.



- **Easy to turn on/ off with wall/ panel mounting**

When implemented in shop flow applications it is easier to control the power through the central plug rather than a power switch.

- **Automatic start when power connected**

When in the AT mode the power is controlled by the central power unit. In AT mode the AFOLUX panel PC automatically starts when the power is connected. This enables multiple panel PCs on a production line to be controlled from a single point.

- **Power management**

ATX mode has a power management function inside that turns the system to standby mode to save power when the panel PC is not used. Therefore, when being used in POS applications, real power savings can be achieved.

- **Remote control advantage**

The standby function on the ATX mode power supply allows the AFOLUX panel PC to be turned on/off remotely via network. Users can set up each panel PC to be turned on/off at different times. Remote power mode control is perfect for advertising applications. Broadcasting times for each AFOLUX can be set at a single terminal and controlled remotely.



IEI Quick Mounting Technology

IEI IQ mount design allows the AFOLUX series to be easily integrated into a diverse variety of applications. The arm design can be used for industrial controls, the panel mount for kiosk devices, the wall mount for e-home terminals and the stand design for thin client applications.



Industrial Grade Compliance

VESA Mounting Standards

The AFOLUX panel PC series has four mounting holes compliant with the VESA mounting standard (75mm x 75mm/100mm x 100mm) on the rear panel for stand mounting and other mounting methods.

Stands

- STAND-A08 supports up to 5.0Kg (for AFL-07A/08A series)
- STAND-A12 supports up to 5.0Kg (for AFL-10A/12A series)
- STAND-A19 supports up to 7.5Kg (for AFL-15A/17A/19A series)
- STAND-B19 supports up to 7.2Kg (for AFL-15A/17A/19A series)



Comfortable Stand



Panel Mount Kits

- AFLPK-07
- AFLPK-08
- AFLPK-10
- AFLPK-12



Wall Mount Kits

- AFLWK-07
- AFLWK-08
- AFLWK-10
- AFLWK-12
- AFLWK-15
- AFLWK-17
- AFLWK-19



Affordable Luxury Multimedia Applications

All AFOLUX panel PC models can help you maintain your competitive edge in digital advertising. Excellent multimedia features make the IEI AFOLUX all-in-one panel PC models the best advertising terminals and the slim all-in-one architecture minimizes the installation space required.

All-in-one Architecture-Space saving advantage

All the components for a fully functional PC including the CPU, memory modules and HDD are installed in the AFOLUX. This reduces the space required when installing the system making it suitable for implementation in areas where space is a premium.



Integrated internal speakers-Enhanced sound effects

Two integrated speakers on the AFOLUX all-in-one panel PC provide great sound quality and improved sound track effects. High-quality sound can be used to attract customers' attention in public areas.



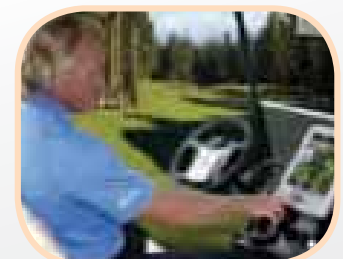
Installed HDD easily stores a large amount of data

A large amount of advertising material is easily stored on the user installed 2.5" HDD. Once installed the HDD can be configured to ensure advertising content is easily managed and selected to target specified customers at specified times during the day.



Preinstalled LAN and wireless antenna -Real-time information broadcasting

The preinstalled LAN and wireless antenna enables timely information delivery to the AFOLUX panel PC. First-hand information is critical for a broadcasting terminal. The optional GPRS module even allows the AFOLUX all-in-one panel PC to update real-time information more conveniently.



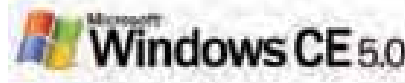
High resolution and high brightness LCD panel -Clearest advertisement image

The high brightness panel enables the AFOLUX all-in-one panel PC to be used in strong sunlight.

IEI's Turnkey Solution

Embedded OS Supports

IEI provides optional pre-installed Windows® XP Embedded or Windows® CE 5.0 turnkey solutions tailored for the AFOLUX series. These turnkey solutions have one Compact Flash memory card with either Windows® XP Embedded or Windows® CE 5.0 pre-installed, one Windows® XP Embedded or Windows® CE 5.0 license, and one CD that contains all related SDK (Software Development Kit) and user manuals.



AFLCF-07-LX-CE
AFLCF-08-LX-CE
AFLCF-10-LX-CE
AFLCF-12-LX-CE
AFLCF-15-CX-CE
AFLCF-17-CX-CE
AFLCF-19-CX-CE

128 MB



Include:

- Windows® CE 5.0 OS image with license
- Thin Client turnkey solutions
- SDK



AFLCF-07-LX-XPE
AFLCF-08-LX-XPE
AFLCF-10-LX-XPE
AFLCF-12-LX-XPE
AFLCF-15-CX-XPE
AFLCF-17-CX-XPE
AFLCF-19-CX-XPE

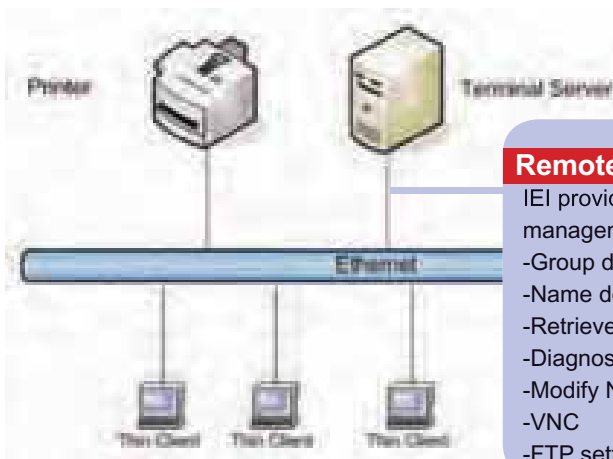
1 GB



Include:

- Windows® XPE OS image with license
- Thin Client turnkey solutions

Thin Client Technology



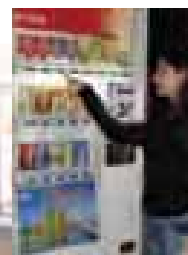
AFOLUX also provides built-in Thin Client Technology in embedded OS turnkey solutions. The thin client technology enables an AFOLUX to access Microsoft Windows-based applications and web-based applications. These applications actually live and run on Microsoft Terminal Service servers, so an AFOLUX can act as a thin client terminal and remotely execute legacy applications, Windows-based SCADA systems, and Windows applications such as word processors, spreadsheets, and database queries.

Advantages of Thin Client Technology

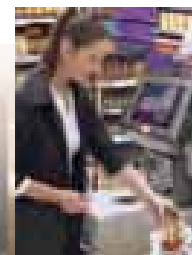
- Reduced hardware cost
- Reduced software cost
- Reduced maintenance cost
- Centrally controlled resources
- Security and protection
- Prevention from client crash

Applications of Thin Client-Server Architecture

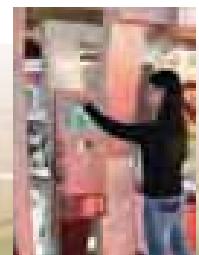
- KIOSK
- Thin Client POS
- Logistics
- Terminals for database system
- OA and IT



Retail Terminal



POS Terminal

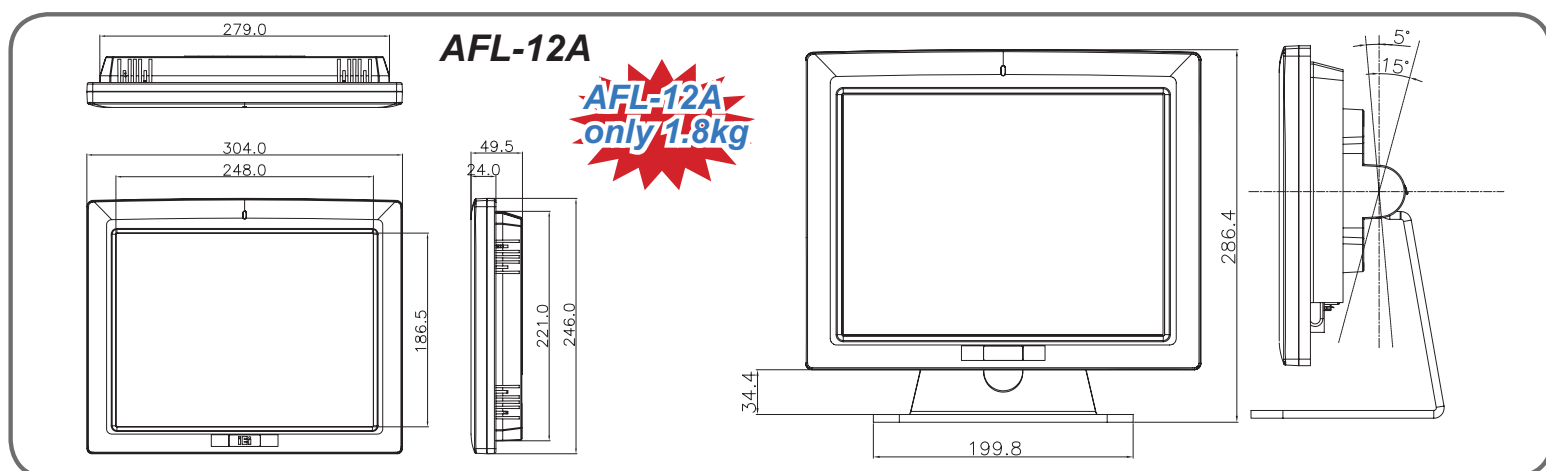
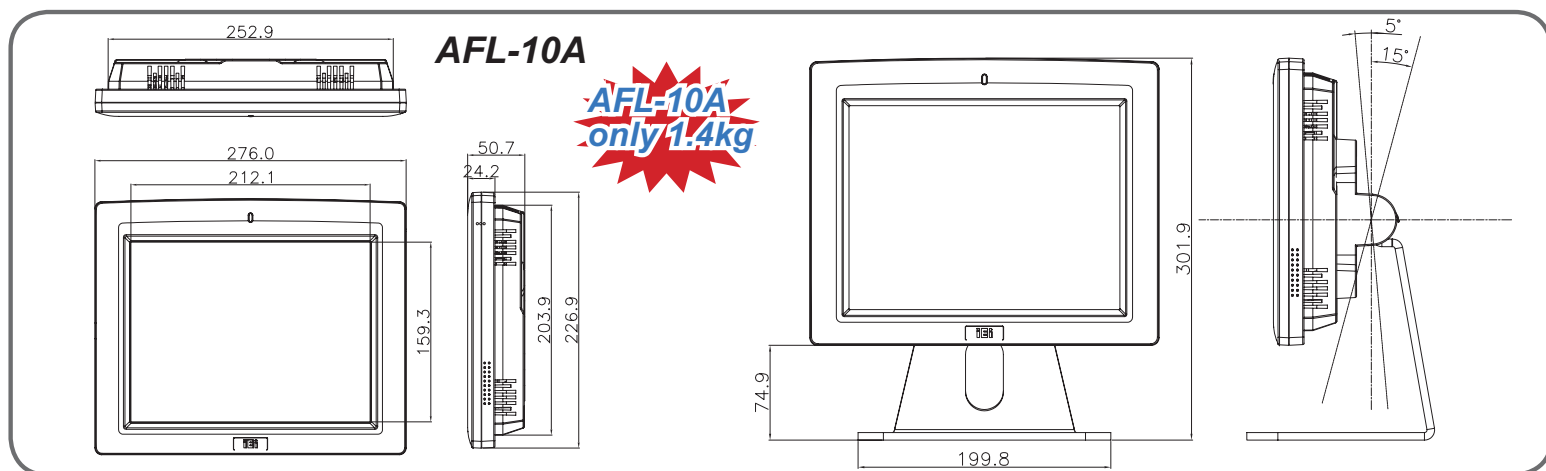
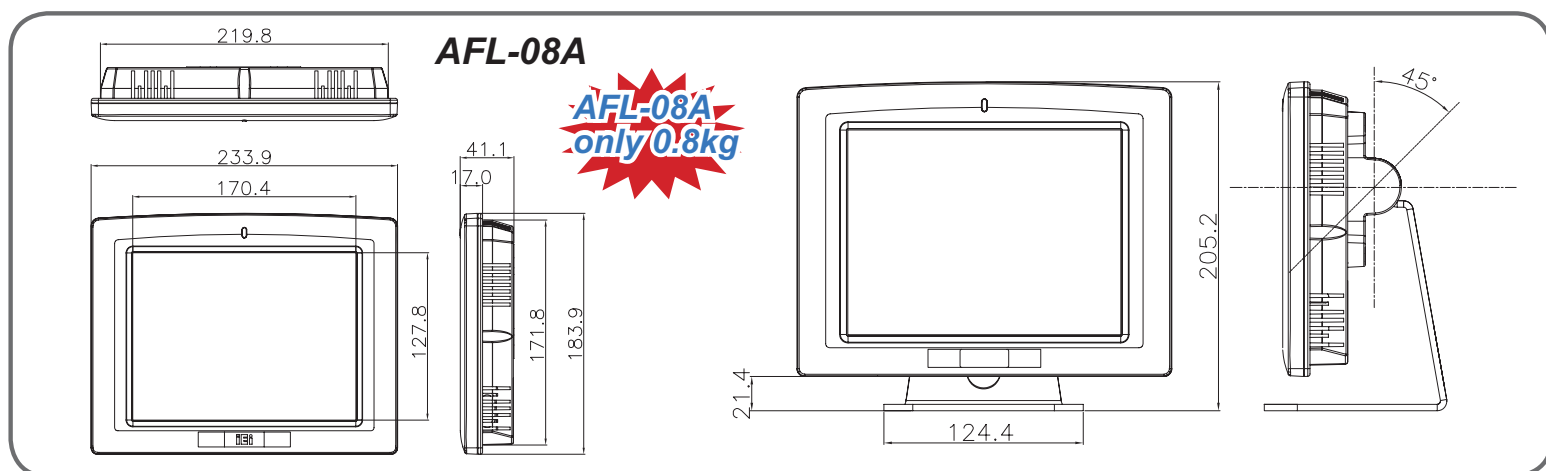
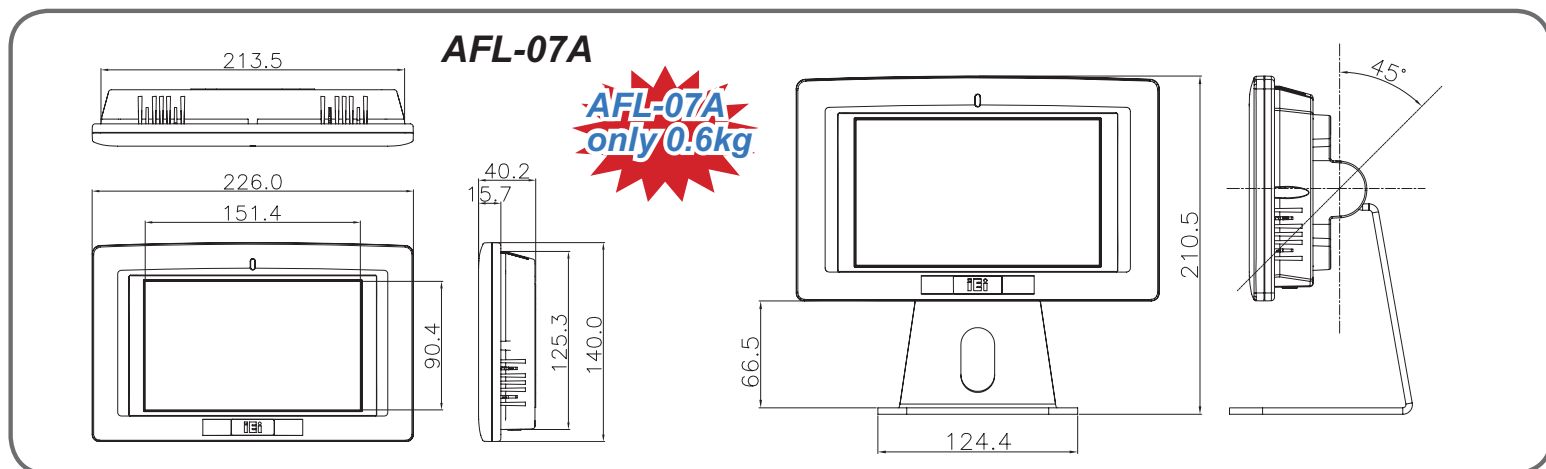


KIOSK

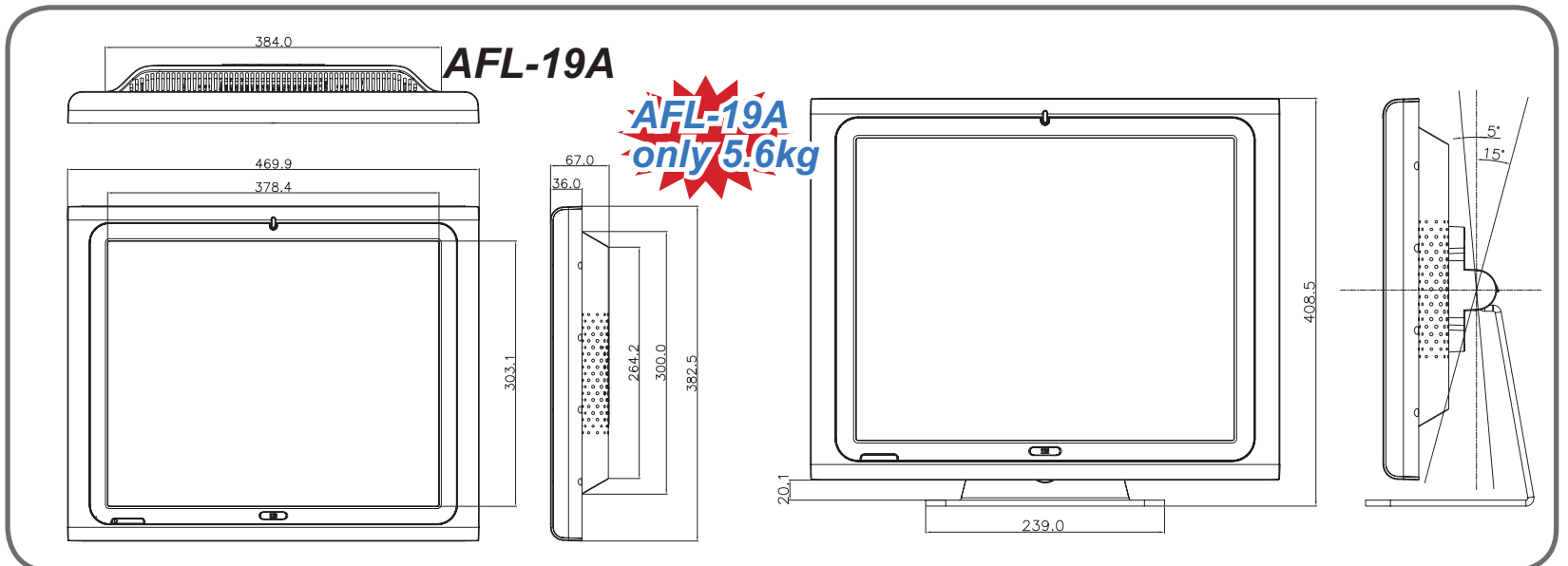
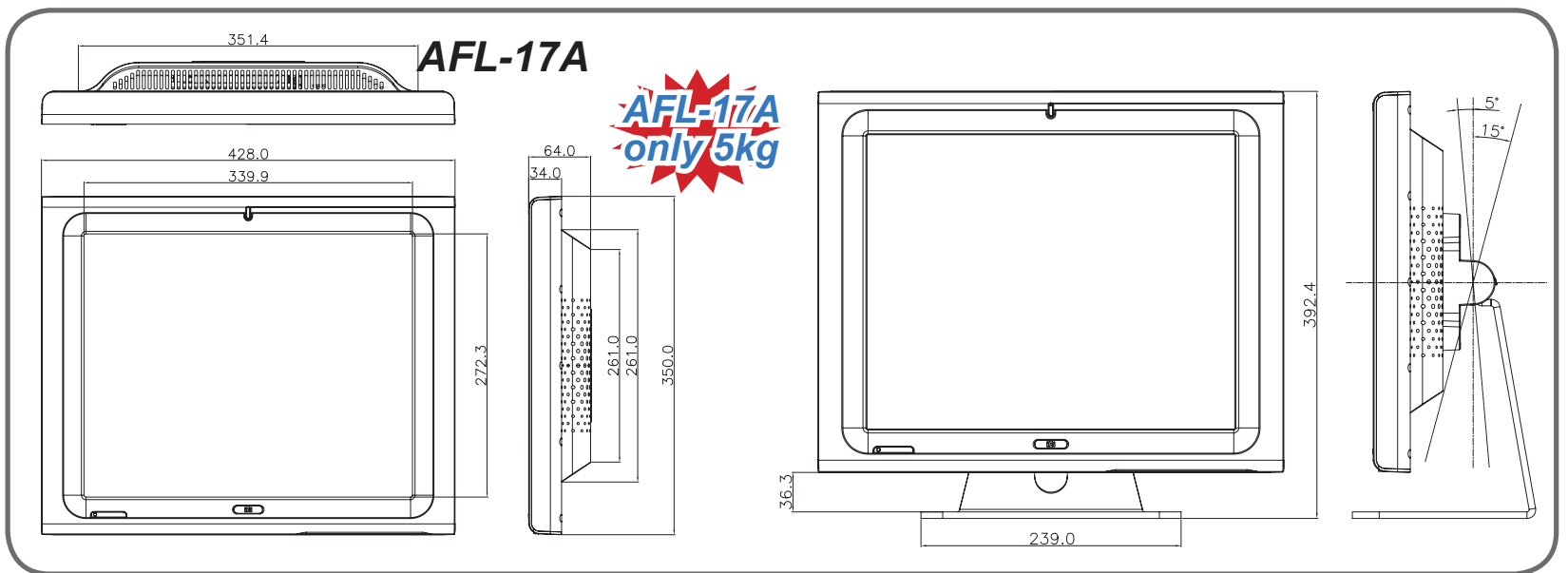
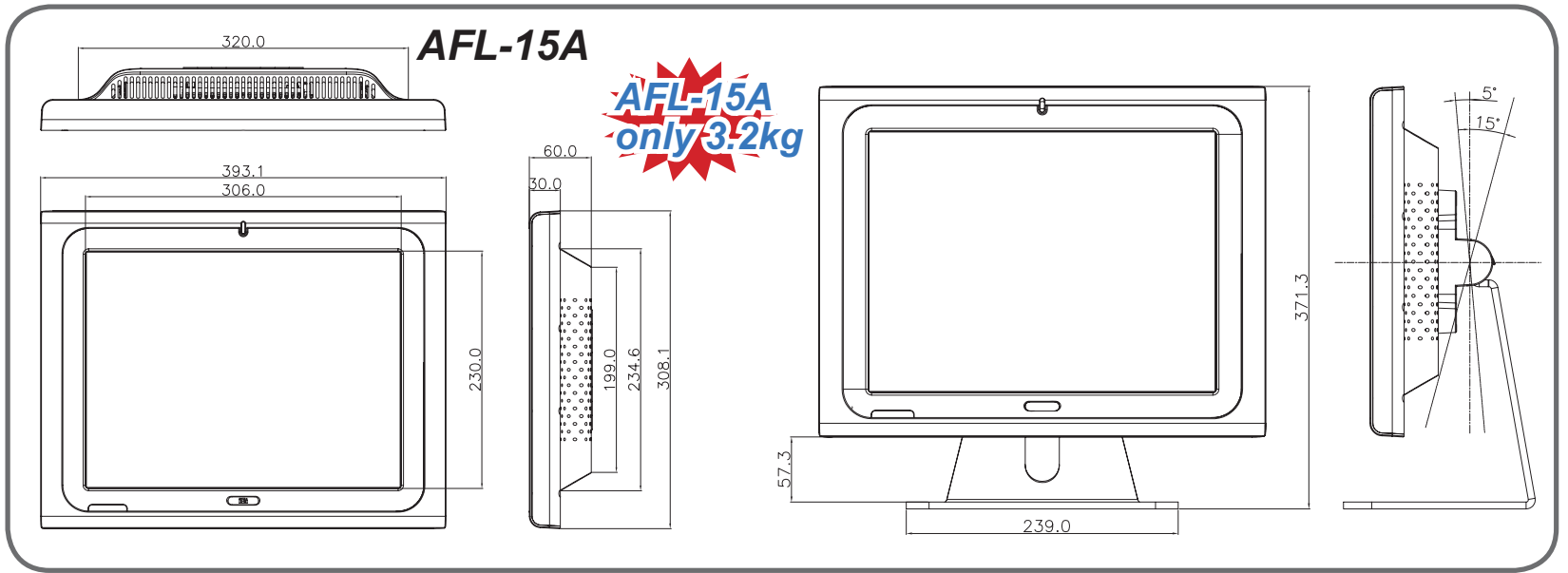


Shop Floor

Dimensions (Unit:mm)



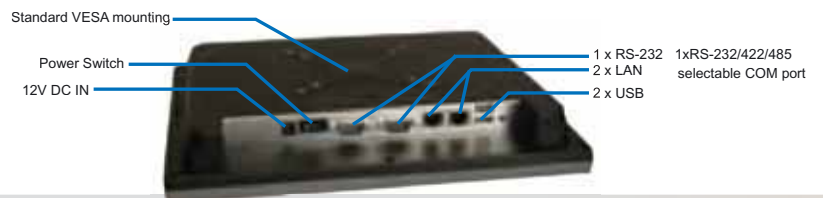
AFOLUX All-in-one Panel PC Family





| Model | AFL-07A-LX-R11 | AFL-08A-LX-R11/ AFL-08AH-LX-R11 | AFL-10A-LX | AFL-12A-LX-R11 |
|---|---|---|---|---|
| LCD Size | 7" | 8.4" | 10.4" | 12.1" |
| Max Resolution | 800 * 480 | 800 * 600 | 800 * 600 | 1024 * 768 |
| Brightness (cd/m ²) | 350 | 220/450 | 400 | 450 |
| Contrast Ratio | 400:1 | 500:1 | 500:1 | 700:1 |
| LCD Color | 262K | 262K | 262K | 262K |
| Pixel Pitch (mm) | 0.1905(H) x 0.1905(V) | 0.213(H) x 0.213(V) | 211.2(H) x 158.4(V) | 0.240(H) x 0.240(V) |
| Viewing Angle (H-V) | 140/110 | 130/110 120/100 | 120/100 | 160/160 |
| Backlight MTBF | 30000 | 20000 / 50000 | 50000 | 50000 |
| SBC Model | AFLMB-LX800 | AFLMB-LX800 | AFLMB-LX800 | AFLMB-LX800 |
| CPU | AMD Geode™ LX 800 (500MHz) | AMD Geode™ LX 800 (500MHz) | AMD Geode™ LX 800 (500MHz) | AMD Geode™ LX 800 (500MHz) |
| Chipset | AMD Geode™ LX 800 + AMD Geode™ CS5536 | AMD Geode™ LX 800 + AMD Geode™ CS5536 | AMD Geode™ LX 800 + AMD Geode™ CS5536 | AMD Geode™ LX 800 + AMD Geode™ CS5536 |
| RAM | Supports one 1GB (maximum) 333MHz or 400MHz DDR SO-DIMM | Supports one 1GB (maximum) 333MHz or 400MHz SO-DIMM | Supports one 1GB (maximum) 333MHz or 400MHz SO-DIMM | Supports one 1GB (maximum) 333MHz or 400MHz SO-DIMM |
| I/O Ports and Switches | 1 x RS-232 COM port 1 x RS-232/422/485 COM port 2 x RJ-45 for 10/100Mbps LAN 2 x USB 2.0 1 x Power Switch 1 x Reset Button | 1 x RS-232 COM port 1 x RS-232/422/485 COM port 2 x RJ-45 for 10/100Mbps LAN 2 x USB 2.0 1 x Power Switch 1 x Reset Button | 1 x RS-232 COM port 1 x RS-232/422/485 COM port 2 x RJ-45 for 10/100Mbps LAN 2 x USB 2.0 1 x Power Switch 1 x Reset Button | 1 x RS-232 COM port 1 x RS-232/422/485 COM port 2 x RJ-45 for 10/100Mbps LAN 2 x USB 2.0 1 x Power Switch 1 x Reset Button |
| SSD | CF Type II | CF Type II | CF Type II | CF Type II |
| Audio | AMP 1.5W + 1.5W | AMP 1.5W + 1.5W | AMP 1.5W + 1.5W | AMP 1.5W + 1.5W |
| Expansion | 1 x Mini PCI (Wireless LAN Module) 1 x Bluetooth Module (USB Interface, Bluetooth V2.0) | 1 x Mini PCI (Wireless LAN Module) 1 x Bluetooth Module (USB Interface, Bluetooth V2.0) | 1 x Mini PCI (Wireless LAN Module) 1 x Bluetooth Module (USB Interface, Bluetooth V2.0) | 1 x Mini PCI (Wireless LAN Module) 1 x Bluetooth Module (USB Interface, Bluetooth V2.0) |
| HDD Drive Bay | N/A | N/A | N/A | 1 x 2.5" IDE HDD bay or Optional GPRS Module |
| Optional GPRS Module (support GSM 850,EGSM 900,DCS 1800 & PCS 1900) | N/A | N/A | Yes | |
| Construction Material | ABS + PC Plastic front frame | ABS + PC Plastic front frame | ABS + PC Plastic front frame | ABS + PC Plastic front frame |
| LED Function | 1 x Power ON/OFF LED on front panel | 1 x Power ON/OFF LED on front panel | 1 x Power ON/OFF LED on front panel | 1 x Power ON/OFF LED on front panel |
| Mounting | Panel, Wall, Rack, Stand or Arm VESA 75mm x 75mm | Panel, Wall, Rack, Stand or Arm VESA 75mm x 75mm | Panel, Wall, Rack, Stand or Arm VESA 75mm x 75mm | Panel, Wall, Rack, Stand or Arm VESA 75mm x 75mm / 100 x 100mm |
| Front Panel Color | Gray 7539U | Gray 7539U | Gray 7539U | Gray 7539U |
| Dimension (WxHxD) (mm) | 226 x 140 x 41 | 234 x 184 x 42 | 276 x 227 x 50.7 | 304 x 246 x 50 |
| Operation Temperature (°C) | 0°C~50°C | 0°C~50°C | 0°C~50°C | 0°C~50°C |
| Storage Temperature (°C) | -20°C~60°C | -20°C~60°C | -20°C~60°C | -20°C~60°C |
| Net Weight | 0.6Kg | 0.8Kg | 1.4Kg | 1.8Kg |
| IP Level(front panel) | IP 64 | IP 64 | IP 64 | IP64 |
| Safety & EMI | Meet CE, EMC, FCC and CB | Meet CE, EMC, FCC and CB | Meet CE, EMC, FCC and CB | Meet CE, EMC, FCC and CB |
| Touch Screen | Resistive Type 4-Wire (touch controller IC is on board) | Resistive Type 4-Wire (touch controller IC is on board) | Resistive Type 5-Wire (touch controller IC is on board) | Resistive Type 5-Wire (touch controller IC is on board) |
| Power Adapter | P/N: 63000-FSP0361AD101C-RS Power: 36W Input: 90VAC~264VAC @ 50/60Hz Output:12VDC | P/N:63000-FSP0361AD101C-RS Power: 36W Input: 90VAC~264VAC @ 50/60Hz Output:12VDC | P/N:63000-FSP0361AD101C-RS Power: 36W Input: 90VAC~264VAC @ 50/60Hz Output:12VDC | P/N:63000-FSP0361AD101C-RS Power: 36W Input: 90VAC~264VAC @ 50/60Hz Output:12VDC |
| Power Requirement | 12VDC | 12VDC | 12VDC | 12VDC |
| Power Consumption | 20W | 20W | 25W | 29W |

Fully Integrated I/O (AFL-07A-LX-R11,AFL-08A-LX-R11, AFL-10A-LX,AFL-12A-LX-R11)





| Model | AFL-15A-CX | AFL-17A-CX | AFL-19A-CX |
|---|--|--|--|
| LCD Size | 15" | 17" | 19" |
| Max Resolution | 1024 x 768 | 1280 x 1024 | 1280 x 1024 |
| Brightness (cd/m ²) | 350 | 300 | 300 |
| Contrast Ratio | 400:1 | 800:1 | 800:1 |
| LCD Color | 262K | 16.7M | 16.7M |
| Pixel Pitch (mm) | 0.297(H) x 0.297(V) | 0.264(H) x 0.264(V) | 0.294(H) x 0.294(V) |
| Viewing Angle (H-V) | 120/100 | 160(H) / 160(V) | 160(H) / 160(V) |
| Backlight MTBF | 50000 | 50000 | 50000 |
| SBC Model | AFLMB-CX700 | AFLMB-CX700 | AFLMB-CX700 |
| CPU | VIA C7® (1.5GHz) with fan (noise: 35.1dB) Fanless VIA Eden™ (500MHz) | VIA C7® (1.5GHz) with fan (noise: 39dB) Fanless VIA Eden™ (500MHz) | VIA C7® (1.5GHz) with fan (noise: 39dB) Fanless VIA Eden™ (500MHz) |
| Chipset | CX700M | CX700M | CX700M |
| RAM | Supports one 200-pin 1GB (maximum) 400MHz or 533MHz DDR2 SO-DIMM | Supports one 200-pin 1GB (maximum) 400MHz or 533MHz DDR2 SO-DIMM | Supports one 200-pin 1GB (maximum) 400MHz or 533MHz DDR2 SO-DIMM |
| I/O Ports and Switches | 1 x RS-232 COM port 1 x RS-232/422/485 COM port 2 x RJ-45 for GbE 4 x USB 2.0 1 x Power Switch 1 x Reset Button | 1 x RS-232 COM port 1 x RS-232/422/485 COM port 2 x RJ-45 for GbE 4 x USB 2.0 1 x Power Switch 1 x Reset Button | 1 x RS-232 COM port 1 x RS-232/422/485 COM port 2 x RJ-45 for GbE 4 x USB 2.0 1 x Power Switch 1 x Reset Button |
| SSD | CF Type II | CF Type II | CF Type II |
| Audio | AMP 1.5W + 1.5W | AMP 1.5W + 1.5W | AMP 1.5W + 1.5W |
| Expansion | 1 x Mini PCI (Wireless LAN Module) 1 x Bluetooth Module (USB Interface, Bluetooth V2.0) | 1 x Mini PCI (Wireless LAN Module) 1 x Bluetooth Module (USB Interface, Bluetooth V2.0) | 1 x Mini PCI (Wireless LAN Module) 1 x Bluetooth Module (USB Interface, Bluetooth V2.0) |
| HDD Drive Bay | 1 x 2.5" IDE/SATA HDD bay or Optional GPRS Module | 1 x 2.5" IDE/SATA HDD bay | 1 x 2.5" IDE/SATA HDD bay |
| Optional GPRS Module (support GSM 850,EGSM 900,DCS 1800 & PCS 1900) | | Yes | Yes |
| Construction Material | ABS + PC Plastic front frame | ABS + PC Plastic front frame | ABS + PC Plastic front frame |
| LED Function | 1 x Power ON/OFF LED on front panel | 1 x Power ON/OFF LED on front panel | 1 x Power ON/OFF LED on front panel |
| Mounting | Wall, Stand or Arm VESA 100mm x 100mm | Wall, Stand or Arm VESA 100mm x 100mm | Wall, Stand or Arm VESA 100mm x 100mm |
| Front Panel Color | Silver | Silver | Silver |
| Dimension (WxHxD) (mm) | 394 x 309 x 61 | 428 x 350 x 65 | 470x 383 x 67 |
| Operation Temperature (°C) | 0°C~40°C | 0°C~40°C | 0°C~40°C |
| Storage Temperature (°C) | -20°C~60°C | -20°C~60°C | -20°C~60°C |
| Net Weight | 3.2kg | 5kg | 5.6kg |
| IP Level(front panel) | IP 64 | IP 64 | IP 64 |
| Safety & EMI | Meet CE, EMC, FCC and CB | Meet CE, EMC, FCC and CB | Meet CE, EMC, FCC and CB |
| Touch Screen | Resistive Type 5-Wire (touch controller IC is on board) | Resistive Type 5-Wire (touch controller IC is on board) | Resistive Type 5-Wire (touch controller IC is on board) |
| Power Adapter | P/N:63000-FSP0361AD101C-RS Power: 80W Input: 90VAC~264VAC @ 50/60Hz Output:12VDC | P/N:63000-FSP0361AD101C-RS Power: 80W Input: 90VAC~264VAC @ 50/60Hz Output:12VDC | P/N:63000-FSP0361AD101C-RS Power: 80W Input: 90VAC~264VAC @ 50/60Hz Output:12VDC |
| Power Requirement | 12VDC | 12VDC | 12VDC |
| Power Consumption | 41W | 61W | 64W |

Fully Integrated I/O (AFL-15A-CX, AFL-17A-CX, AFL-19A-CX)



Optional Internal GPRS Spec (P/N: GPRS01)

| | |
|-----------------------------|--|
| EDGE/GPRS/GSM Air interface | Quad-band operation GSM850, EGSM 900, DCS 1800, PCS 1900 GSM Power Class 4 (2W) for 850/900 bands, GSM Power Class 1 (1W) for 1800/1900 bands EDGE class E2 (+27dBm in 850/900 bands, +26dBm in 1800/1900 bands) GSM/GPRS Rel '97; PCS1900 Rel '98; EGPRS Rel '99 compliant |
| EGPRS/GPRS (PS) feature set | GPRS Class 10, coding schemes 1-4 EDGE Class 10, Multi-slot classes 1-9 GPRS/EGPRS class B type 1 MT Link Adaptation Incremental redundancy (IR) |
| Operating System Supported | Windows 2000/XP Home/XP Pro |
| USB Interface | USB2.0 +5V DC |
| SIM Card Interface | 3.0V interface |
| Temperature | -30°C to +65°C |
| Humidity | up to 95% non-condensing |
| Dimensions | 109.3 x 42.7 x 17.7mm |

Built-in Bluetooth Spec (USB 2.0 interface) (P/N:BT01)

| | |
|----------------------------|--|
| Standard | Bluetooth V2.0 |
| Frequency Band | 2.402GHz ~ 2.480GHz unlicensed ISM band |
| Modulation Method | GFSK for 1Mbps; $\pi/4$ -DQPSK for 2Mbps; 8-DPSK for 3Mbps |
| Spread Spectrum | FHSS (Frequency Hopping Spread Spectrum) |
| RF Output Power | Class 2 (under 4 dBm) |
| Antenna terminal | 50 Ohms |
| DC power | DC 3.3 V or DC 5V |
| I/O interface | USB v2.0 compliant interface |
| Two GPIO interface | LED link indicator interface |
| Dimension | 35 x 11 mm |
| Operating system supported | Windows XP, 2000, 98SE, Me |

Options

| | AFL-07A-LX-R11 | AFL-08A-LX-R11 | AFL-10A-LX | AFL-12A-LX-R11 | AFL-15A-CX | AFL-17A-CX | AFL-19A-CX |
|--------------------|------------------|------------------|------------------|------------------|------------------------|------------------------|------------------------|
| Panel mounting kit | AFLPK-07 | AFLPK-08 | AFLPK-10 | AFLPK-12 | - | - | - |
| Wall mounting kit | AFLWK-07 | AFLWK-08 | AFLWK-10 | AFLWK-12 | AFLWK-15 | AFLWK-17 | AFLWK-19 |
| Rack mounting kit | AFLRK-07 | AFLRK-08 | AFLRK-10 | AFLRK-12 | - | - | - |
| Stand | STAND-A08 | STAND-A08 | STAND-A12 | STAND-A12 | STAND-A19 STAND-B19 | STAND-A19 STAND-B19 | STAND-A19 STAND-B19 |
| OS: WIN CE 5.0 | *AFLCF-07-LX-CE | *AFLCF-08-LX-CE | *AFLCF-10-LX-CE | *AFLCF-12-LX-CE | *AFLCF-15-CX-CE | *AFLCF-17-CX-CE | *AFLCF-19-CX-CE |
| OS: WIN XPE | *AFLCF-07-LX-XPE | *AFLCF-08-LX-XPE | *AFLCF-10-LX-XPE | *AFLCF-12-LX-XPE | *AFLCF-15-CX-XPE | *AFLCF-17-CX-XPE | *AFLCF-19-CX-XPE |

* Note: Include-CF card, OS image with WINCE or XPE license and IEI Thin Client software package

* CF card capacity with CE 5.0:128MB, with XPE:1GB

Packing List

| | |
|---------------------|--|
| 1xPower Cable | 1xHDD Cable(12.1",15",17",19" model only) |
| 1xUser Manual-CDROM | 1xSATA HDD Cable(for 15",17",19"model only) |
| 1xScrew Kit | 1xeSATA Cable(for 15",17",19"model only) |
| 1xTouch Pen | 1x36W Power Adapter(for 7",8.4",10",12.1"model only) |
| | 1x80W Power Adapter(for 15",17",19"model only) |



Ordering Information

** : (GPRS01) for optional GPRS module. GPRS module for AFL-10A/12A/15A/17A/19A model only

Note: For AFL-12A/15A model, if the GPRS module is used, the HDD can't be implemented.

AFL-07A

- AFL-07A-LX/WT-R/256MB-R11: 7", 350cd/m² fanless panel PC with AMD Geode™ LX 800 CPU, 256MB DDR RAM, 802.11b/g wireless module, Bluetooth module and touch screen, RoHS
- AFL-07A-LX/WT-R/512MB-R11: 7", 350cd/m² fanless panel PC with AMD Geode™ LX 800 CPU, 512MB DDR RAM, 802.11b/g wireless module, Bluetooth module and touch screen, RoHS

AFL-08A



- AFL-08AH-LX/WT-R/256MB-R11: 8.4", 450cd/m² fanless panel PC with AMD Geode™ LX 800 CPU, 256MB DDR RAM, 802.11b/g wireless module, Bluetooth module and touch screen, RoHS
- AFL-08AH-LX/WT-R/512MB-R11: 8.4", 450cd/m² fanless panel PC with AMD Geode™ LX 800 CPU, 512MB DDR RAM, 802.11b/g wireless module, Bluetooth module and touch screen, RoHS
- AFL-08A-LX/WT-R/256MB-R11: 8.4", 220cd/m² fanless panel PC with AMD Geode™ LX 800 CPU, 256MB DDR RAM, 802.11b/g wireless module, Bluetooth module and touch screen, RoHS
- AFL-08A-LX/WT-R/512MB-R11: 8.4", 220cd/m² fanless panel PC with AMD Geode™ LX 800 CPU, 512MB DDR RAM, 802.11b/g wireless module, Bluetooth module and touch screen, RoHS

AFL-10A

- AFL-10A-LX/WT-R/256MB/**(GPRS01): 10.4", 400cd/m² fanless panel PC with AMD Geode™ LX 800 CPU, 256MB DDR RAM, 802.11b/g wireless module, Bluetooth module and touch screen, RoHS
- AFL-10A-LX/WT-R/512MB/**(GPRS01): 10.4", 400cd/m² fanless panel PC with AMD Geode™ LX 800 CPU, 512MB DDR RAM, 802.11b/g wireless module, Bluetooth module and touch screen, RoHS

AFL-12A

- AFL-12A-LX/WT-R/256MB-R11/**(GPRS01): 12.1", 450cd/m² fanless panel PC with AMD Geode™ LX 800 CPU, 256MB DDR RAM, 802.11b/g wireless module, Bluetooth module and touch screen, RoHS
- AFL-12A-LX/WT-R/512MB-R11/**(GPRS01): 12.1", 450cd/m² fanless panel PC with AMD Geode™ LX 800 CPU, 512MB DDR RAM, 802.11b/g wireless module, Bluetooth module and touch screen, RoHS

AFL-15A

- AFL-15A-CX-15GZ/WT-R/512MB/**(GPRS01): 15", 350cd/m² panel PC with VIA C7® CPU, 512MB DDR2 RAM, 802/11b/g wireless module, Bluetooth module and touch screen, RoHS
- AFL-15A-CX-05GZ/WT-R/512MB/**(GPRS01): 15", 350cd/m² fanless panel PC with VIA Eden™ CPU, 512MB DDR2 RAM, 802.11b/g wireless module, Bluetooth module and touch screen, RoHS

AFL-17A

- AFL-17A-CX-15GZ/WT-R/512MB/**(GPRS01): 17", 300cd/m² panel PC with VIA C7® CPU, 512MB DDR2 RAM, 802.11b/g wireless module, Bluetooth module and touch screen, RoHS
- AFL-17A-CX-05GZ/WT-R/512MB/**(GPRS01): 17", 300cd/m² fanless panel PC with VIA Eden™ CPU, 512MB DDR2 RAM, 802.11b/g wireless module, Bluetooth module and touch screen, RoHS

AFL-19A

- AFL-19A-CX-15GZ/WT-R/512MB/**(GPRS01): 19", 300cd/m² panel PC with VIA C7® CPU, 512MB DDR2 RAM, 802.11b/g wireless module, Bluetooth module and touch screen, RoHS
- AFL-19A-CX-05GZ/WT-R/512MB/**(GPRS01): 19", 300cd/m² fanless panel PC with VIA Eden™ CPU, 512MB DDR2 RAM, 802.11b/g wireless module, Bluetooth module and touch screen, RoHS

Maximize Your Business Potential



The streamline AFOLUX series all-in-one panel PC offers installation versatility with its wide ranging mounting options that help maximize your business potential



AFOLUX

7"-19" All-in-one Panel PC

Spectra Computersysteme GmbH
Humboldtstraße 36
D-70771 Leinfelden-Echterdingen

Telefon +49 (0) 7 11 - 9 02 97 - 0
Telefax +49 (0) 7 11 - 9 02 97 - 90
E-Mail spectra@spectra.de
Internet www.spectra.de

Spectra (Schweiz) AG
Gewerbestr. 12a
CH-8132 Egg/ZH

Telefon +41 (0) 43 - 277 10 50
Telefax +41 (0) 43 - 277 10 51
E-Mail info@spectra.ch
Internet www.spectra.ch

Spectra Automatisierungstechnik GmbH
Sipbachzell 146
A-4621 Sipbachzell

Telefon +43 (0) 72 40 - 201 90
Telefax +43 (0) 72 40 - 201 90 60
E-Mail info@spectra-austria.at
Internet www.spectra-austria.at