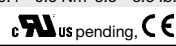


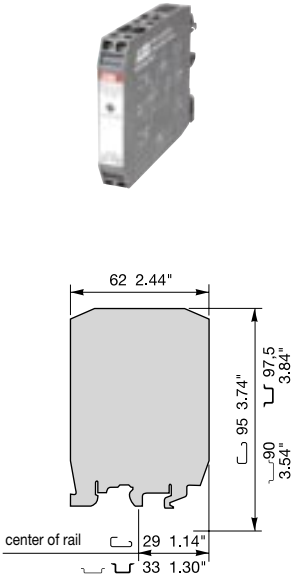
Relay Interfaces

Relay modules R900  DIN 1-3

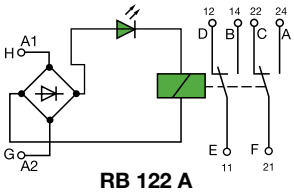
RB 122... - instant relay blocks - 11.5 mm .453" or 15 mm .591" spacing

Characteristics

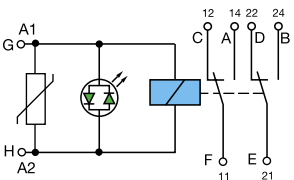
Relay characteristics	RB 122 A		RB 122	RB 122 B	
COIL					
Rated voltage +15%, -10% on DC ±15% on AC	24 V AC	24 V DC	24 V DC	110 V AC/50Hz	115 V AC/60Hz
Frequency	50 / 60 Hz				
Power	0.4 VA	0.35 W	0.48 W	3.6 VA	4 VA
Rated current	16.8 mA	14.4 mA	20 mA	33 mA	35 mA
Drop-out voltage at 20°C	9.2 V	6.5 V	2.4 V DC	11 V AC	11.5 V AC
Permissible leakage current	2 mA max.		1.5 mA	2 mA	2.6 mA
CONTACT					
Type	1 DPDT				
Voltage switching range min./max.	10 ⁻⁵ V / 250 V AC		12 V / 250 V		
Current switching range min./max.	10 ⁻⁵ A / 3 A		100 mA / 7 A	100 mA / 7 A	100 mA / 7 A
Load switching range			1.2 VA / 1750 VA	1.2 VA / 1750 VA	1.2 VA / 1750 VA
AC1 min. / max.	10 ⁻¹⁰ VA / 250 VA		1.2 W / see curve hereunder		
DC1 min. / max.	10 ⁻¹⁰ W / 90 W				
Number of on-load operations	1.8 x 10 ⁶ (2 A / 60 W)				
Number of off-load operations	10 ⁶		30 x 10 ⁶		
Operating speed F	6 ms		8 ms		6 ms
O	11 ms		15 ms		12 ms
Bounce	1 ms		2 ms		
Insulation coil / contact	1500 V RMS		2500 V RMS		
Resistance to shock coil / contact			4000 V RMS		
Insulation contact / contact			1000 V RMS		
Ambient temperature storage			-40°C to +80°C		
operating			see derating curves		
Other characteristics					
Body material	grey <input type="checkbox"/>		UL 94 V0		
Wire	Solid wire		0.5 - 4 mm ² / 20 - 12 AWG		
size	Stranded wire		0.5 - 2.5 mm ² / 20 - 12 AWG		
Rated wire size			2.5 mm ² / 12 AWG		
Wire stripping length			7 mm .276"		
Recommended screwdriver			3.5 mm .137"		
Protection			IP20 NEMA1		
Recommended torque			0.4 - 0.6 Nm 3.5 - 5.3 lb.in		
Approvals					
Reference standards	CEI 947-7-1 / CEI 947-1 / CEI 1131-2 (in relevant parts) / CEI 60664-1 / CEM : IRC 1000-4-2, 3, 4, 5, 6.				



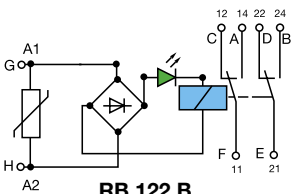
Relay blocks R900



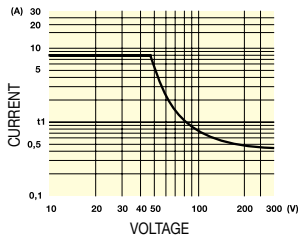
RB 122 A



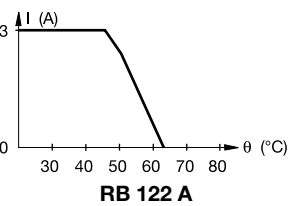
RB 122



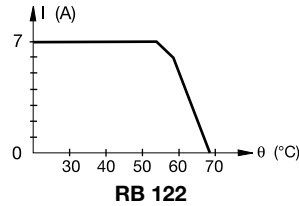
RB 122 B



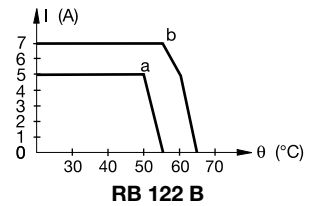
Derating curves



RB 122 A



RB 122



RB 122 B

a : 110 V AC/50 Hz block
b : 115 V AC/60 Hz block

Order codes

Description	Type	Order P/N	Packaging	Weight kg
Relay block 24 V AC/ DC 11.5 mm spacing	RB 122A-24VAC/DC	1SNA 630 011 R2100	1	0.05
Relay block 24 VDC 15 mm spacing	RB 122-24VDC	1SNA 630 019 R0100	1	0.05
Relay block 110 V AC/50 Hz 15 mm spacing	RB 122B-110VAC/50Hz	1SNA 630 021 R2300	1	0.06
Relay block 115 V AC/60 Hz 15 mm spacing	RB 122B-115VAC/60Hz	1SNA 630 022 R2400	1	0.06

Accessories

High end section	BADH	1SNA 116 900 R2700	50
	BAMH	1SNA 114 836 R0000	50
	BAMH V0	1SNA 194 836 R0100	50
	Lengthwise marker	RLV	1SNA 103 849 R0300
Marking method	RC55	see marking	

