

# PR-1500A

5-slot Half-size Industrial PC Chassis



150/200 AT/ATX power supply



Two USB ports

## Specifications

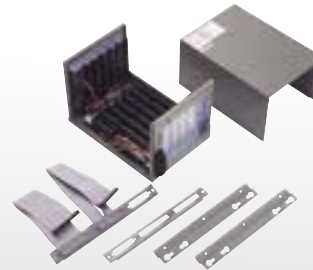
- ◆ Desk Top or Wall mount
- ◆ Drive Bays: 1 x 3.5" FDD, 1 x 3.5" HDD (Internal), 1 x slim type CD-ROM
- ◆ One 8cm fan with filter
- ◆ Support Backplane: BP-5S, IP-5S, IP-5S2 (AT power supply) IP-5SA, IP-5SA2 (ATX power supply)
- ◆ Standard Power Supply:  
ACE-816A 150W ATX PSU  
ACE-916A 150W ATX PSU  
UPF200-AA 200W ATX PSU for P4 system
- ◆ Optional Power Supply:  
ACE-916AP 150W AT PSU with PFC function  
ACE-816AP 150W ATX PSU with PFC function  
ACE-830VU1/CU1/TU1 12V/24V/48V DC Input ATX PSU
- ◆ Colors: White (PANTONE 413C)
- ◆ Vibration: 5-17Hz, 0.1" double amplitude displacement  
17-640Hz, 1.5G acceleration peak to peak
- ◆ Shock: 10G acceleration peak to peak (11ms)
- ◆ Dimensions: 286(W) x 132(H) x 254(D)mm
- ◆ Net/GW (kg): 5/7

## Ordering Information

- **PR-1500AW:** ACE-916A or ACE-816A or UPF200-AA

# PAC-52

6-slot Half-size Industrial PC Chassis



## Specifications

- ◆ Supports backplane: IP-6S, BP-6S
- ◆ Supports max. card length: 190mm
- ◆ Five DC input terminal block for power supply connection
- ◆ Convenient FDD, HDD & parallel port cables for external connection
- ◆ Vibration: 5-17Hz, 0.1" double amplitude displacement  
17-640Hz, 1.5G acceleration peak to peak
- ◆ Shock: 10G acceleration peak to peak (11ms)
- ◆ Color: Industrial Green (PANTONE 417C)
- ◆ Dimensions: 152(W) x 146.7(H) x 218(D)mm; (6" x 5.7" x 8.6")
- ◆ Net/GW (kg): 2/3

## Ordering Information

- **PAC-52G/** **B**: 6-slot compact chassis with B backplane
- B** Backplane  
(Please select specified backplane for each PAC-52 chassis)

# PAC-600

6-slot Half-size Industrial PC Chassis



Equipped with wall-mount kit

Two USB port

## Specifications

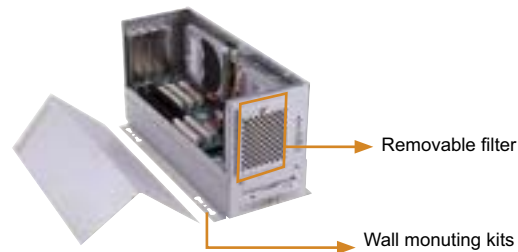
- ◆ Front Panel with door to protect the system safety
- ◆ Desk top or wall mount application
- ◆ Drive Bays: 1x3.5 FDD, 1x3.5 internal HDD drive bay
- ◆ Cooling Fan: One 8cm cooling fan with removable filter
- ◆ Dust prevent cover for Floppy drive and USB port, power switch
- ◆ Removable fan filter on the front side
- ◆ Optional BP-6S, IP-6S, Backplane for AT PSU
- ◆ Optional IP-6SA Backplane for ATX PSU
- ◆ Standard Power Supply: ACE-832A 300W ATX Power Supply
- ◆ Optional Power Supply: PS/2 Size AT/ATX Power Supply
- ◆ Vibration: 5-17Hz, 0.1 double amplitude displacement  
17-640 Hz, 1.5G acceleration part to part
- ◆ Shock: 10G acceleration part to part (11ms)
- ◆ Color: Dark Blue (PANTONE 433C)
- ◆ Dimension: 260mm(W) x 170mm(H) x 300mm(D)
- ◆ Net/GW: 6/8(kg)

## Ordering Information

- **PAC-600/ACE-925A**  
6-Slot Half-size Industrial Chassis with ACE-925A Power Supply
- **PAC-600/ACE-832A**  
6-Slot Half-size Industrial Chassis with ACE-832A Power Supply

# PAC-42F

4-slot Full-size Industrial PC Chassis



Removable filter

Wall mounting kits

## Specifications

- ◆ Drive Bays: 1 x 3.5" FDD, 2 x 3.5" HDD
- ◆ One 8cm cooling fan with removable filter
- ◆ Designed with fan fault detecting system
- ◆ Supports backplane: BP-4S, IP-4S, PCI-4S, IP-4S2, IP-4S3
- ◆ Supports power supply : ACE-890 Series power supply
- ◆ Vibration: 5-17Hz, 0.1" double amplitude displacement  
17-640Hz, 1.5G acceleration peak to peak
- ◆ Shock: 10G acceleration peak to peak (11ms)
- ◆ Color: White (PANTONE 413C)
- ◆ Dimensions: 140(W) x 200(H) x 396(D)mm; (5.5" x 7.9" x 15.6")
- ◆ Net/GW: 5/7 (kg)

## Ordering Information

- **PAC-42FW/ACE-890A**  
4-slot compact chassis with ACE-890A power supply

Single Board Computer

LCD Product Series

Chassis

RACK-mount

Compact

Embedded

Barebone System

Power supply

Accessory