

# PRISM 3030/3060

---

## HIGHLIGHTS

---

T1 Multiplexing solution, comprehensive and compact

Integral T1 CSU

Enhanced voice capabilities

Unparalleled diagnostic and testing capabilities

Embedded SNMP Agent

User-friendly management

---

## APPLICATION CARDS

---

### FXA Analog Voice

Caller ID, DID, DNIS, ANI, UVG, CLASS  
Onboard ring generator

### Dual High-Speed Data

Dual combinations of V.35, RS-232 or EIA-530  
Synchronous Nx56/64 kbps

### 4-Wire E&M Voice

Type I, II, III, IV and V  
6 Ports per card

### Dual DSX Interface

Provides drop/insert capability  
Direct connection to PBX

### FXO Analog Voice

DID, DNIS, ANI, UVG, CLASS  
Onboard -48V phone power  
6 Ports per card

### SNMP LAN Management Interface

Ethernet interface to LAN/WAN  
Embedded SNMP  
Optional DSX-1 interface

Verilink's PRISM 3030 and 3060 Integrated Access Multiplexers reduce communication costs by combining voice and data over a single T1 facility. These slim devices are customized with plug-in cards to meet today's demanding networking needs. This modularity allows easy future expansion as the network grows.

Advanced telephony technologies are supported by the 3030/3060. Verilink's voice cards act as an enhanced channel bank to support signaling features such as DNIS and Caller ID. These value-added services can be implemented in 911 dispatching, operator services, and other database applications to create "intelligent" telephone networks.

Unmatched features are incorporated into the 3030/3060, saving network managers time and effort in problem detection, resolution and analysis. The integral T1 CSU allows users to view 30 days of collected performance data. Normally found only in expensive testing equipment, the 3030/3060 integrates pattern



testing and loopback modes to monitor line conditions of the network and connected devices.

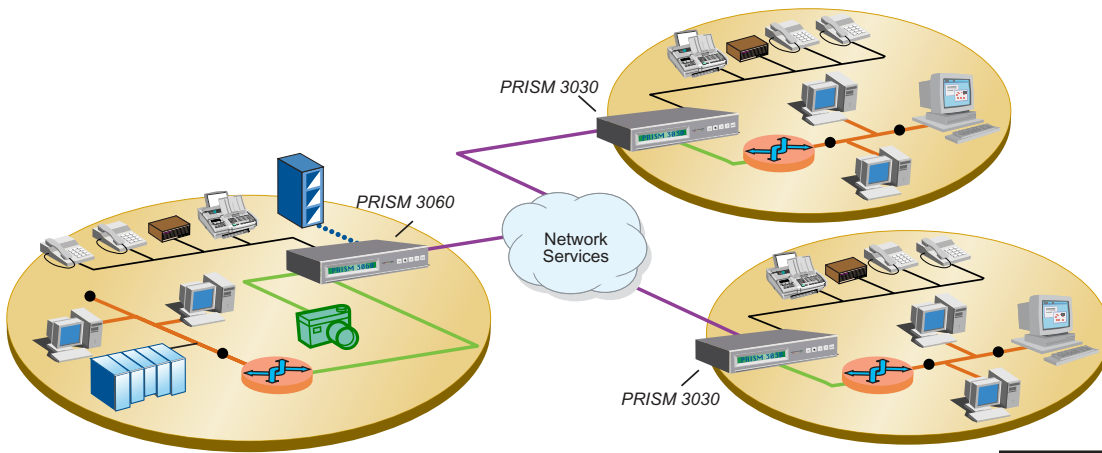
The PRISM 3030/3060 supports several methods of network management, all simple enough to avoid adding dedicated support personnel:

- Ethernet interface card with embedded SNMP/Telnet (VT100)
- LCD Menu and Keypad
- Local VT100 via supervisory port
- Remote configuration via FDL, dial-up modem or in-bank link
- Verilink 8100A Site Manager

Backed with a 5-year guarantee, the PRISM 3030/3060 allows organizations to capitalize on the efficiencies of integrating voice, data and image applications over T1 facilities.

Go to [www.verilink.com](http://www.verilink.com) or  
call 866.665.1515 for more information





Legend

- |                  |         |        |      |     |
|------------------|---------|--------|------|-----|
| Network Services | Phone   | Video  | SNMP | DSX |
| Router           | CAD/CAM | Server | T1   | FSX |
| FAX              | Modem   | PBX    | V.35 |     |

**SPECIFICATIONS**

**PART NUMBER AND DESCRIPTION**

- F-3030-001- - 1211: PRISM 3030 T1 Multiplexer 110 VAC power, 423 station clock
- F-3060-001A- - 1211: PRISM 3060 T1 Multiplexer 110 VAC power, 423 station clock
- F-3011-100- - 1120: SNMP LAN Management plug-in card with Ethernet
- F-3011-100- - 1130: SNMP LAN Management plug-in card with Ethernet and DSX-1
- F-3010-100- - 111: V.35/V.35 Dual high-speed data plug-in card
- F-3010-100- - 112: V.35/EIA-530 Dual high-speed data plug-in card
- F-3010-100- - 113: EIA-530/EIA-530 Dual high-speed data plug-in card
- F-3010-100- - 114: EIA-530/RS-232 High and low speed data plug-in card
- F-3010-100- - 115: V.35/RS-232 High and low speed data plug-in card
- F-3010-100- - 116: RS-232/RS-232 Low speed data plug-in card
- F-3010-300- - 1111: DSX-1/DSX-1 Data plug-in card
- F-3011-100- - 1110: Single DSX-1 Data plug-in card
- F-3010-200A- - 111: FXS Analog plug-in card
- F-3010-200- - 112: 4-Wire E&M Analog plug-in card, Supports Type I, II, III, TO signalling
- F-3010-200A- - 113: FXO Analog plug-in card
- F-3010-200- - 114: 4-Wire E&M Analog plug-in card, Supports Type I, II, III, IV, V, TO signalling

**NETWORK INTERFACE**

Line Rate: 1.544 Mbps (± 50 ppm)  
 Line Framing: D4 or ESF  
 Line Code: AMI or B8ZS  
 Input Signal: 0 to -27 dB (ALBO)  
 Connection: RJ-48C jack, 100 ohms ± 5%  
 Output Signal: 3.0 V Protection, base-peck into 100 ohms with protection  
 Line Build Out: 0, -7.5, -15, -22.5 dB Attenuation  
 Transient Voltage: 1000 V Protection, fused input/output  
 Jitter Control: per TR 62411 and T1.403  
 Timing Source: Internal, recovered line clock, external DTE, station clock  
 Ones Density: B8ZS, Nx56 Bit stuffing, alternate fill; complies with TR 62411

**ALARMS**

Activation: Programmable thresholds  
 Connection: Call out on alarm (COA), NO/NC dry contacts, 8100A Site Manager, trap messages  
 Contact Ratings: 0.6 A at 125 VAC, 2.0 A at 30 VDC

**INDUSTRY LISTINGS**

FCC Compliance: Part 15 Subpart B, Class A, Part 68  
 US Safety: UL 1459 2nd Edition  
 Canadian Safety: CSA C22.2 No. 225-M90  
 Industry Canada: CS-03

**DIAGNOSTICS**

Performance: Monitoring per TR 54016 and T1.403  
 Network Loops: Line or Payload  
 Fractional Loops: Responds to in-band V.54 loop code  
 DTE Port Loops: Loop toward network or DTE  
 BERT: Multiple test patterns toward network or DTE

**TIMING**

Network 1, Network 2, Internal, Serial 1, Serial 2

**POWER REQUIREMENTS**

110 VAC: 0.5 A, 28 W, 95 BTU maximum  
 220 VAC: 0.25 A, 28 W, 95 BTU maximum  
 48 VDC: 0.583 A, 28 W, 95 BTU maximum

**MECHANICAL**

Mounting: Desktop, horizontal rack, or wall mount  
 Dimensions: 3030 - 17.5 in. W, 1.75 in. H, 12.5 in. D (1 RU); 3060 - 17.5 in. W, 3.5 in. H, 12.5 in. D (2 RU)  
 Weight: 3030 - 8 lb; 3060 - 11 lb

**ENVIRONMENTAL**

Operating Temperature: 0 to 50 °C (32 to 122 °F)  
 Storage Temperature: -20 to 85 °C (-4 to 185 °F)  
 Humidity: 95% maximum, non-condensing

**COMPATIBILITY**

- TR 62411
- TR 41458
- TR 54016
- TR 54019A
- T1.403

**WARRANTY AND SUPPORT**

Five-year warranty



I.S. EN ISO 9001:2000 DS-44-00071 (Rev. 1 3.02)

©2002 Verilink Corporation. Verilink, the Verilink logo, and WANsuite are registered trademarks of Verilink Corporation. Other brands or products mentioned may be trademarks or registered trademarks of their respective owners.  
 This document does not create any express or implied warranty about Verilink or about its products or services. Verilink's sole warranty is contained in its product warranty. The end-user documentation shipped with Verilink products constitutes the sole specifications referred to in the product warranty. Verilink has made reasonable efforts to verify that the information contained herein is accurate, but Verilink assumes no responsibility for its use or any infringement of patents or other rights of third parties that may result. The customer is solely responsible for verifying the suitability of Verilink's products for its use. Specifications are subject to change without notice.

