

MODEL NO:



CUI INC

PAGE NO: 1 of 4

PART NO: **DMS033200-P5-ET**

UNIT: mm

DATE: **02/04/02**

All information contained herein applies only to the above listed part number. Other versions of this part number with electrical or mechanical variations are available. Contact CUI Inc. for further assistance. 9615 SW Allen Blvd., Ste. 103, Beaverton OR 97005
800-275-4899 • 503-643-4899 • Fax: 503-643-6129 • www.cui.com

Model No.: DMS033200-P5-ET
Description: Wall-Mount Switching Adapter +3.3V/2.0A
Issued Date: October 31, 2001
Revision No.: Original

Table of Contents

- 1.0 Input Requirements
- 2.0 Output Requirements
- 3.0 Efficiency
- 4.0 Protection Requirements
- 5.0 Environmental
- 6.0 EMI Requirements
- 7.0 Safety Requirements
- 8.0 Reliability
- 9.0 Dimensions



All information contained herein applies only to the above listed part number. Other versions of this part number with electrical or mechanical variations are available. Contact CUI Inc. for further assistance. 9615 SW Allen Blvd., Ste. 103, Beaverton OR 97005
800-275-4899 • 503-643-4899 • Fax: 503-643-6129 • www.cui.com

1.0 Input Requirements

- 1.1 AC Voltage:
90Vac to 265Vac input
- 1.2 Frequency:
47Hz to 63Hz
- 1.3 AC Current:
0.4A max.
- 1.4 Inrush Current:
40A max. at 132Vac, Full load, Cold start, 25°C.

2.0 Output Requirements

2.1 Output Regulation, Ripple and Noise, Current:

Output Voltage	Output Tolerance	Ripple & Noise	Load	
			Min	Max
+ 3.3Vdc	+3.14V~+3.46V	50mVp-p	0.0A	2.0A

Note: The peak to peak ripple and noise for each output is less than specification at rated load measuring is done by 20MHz bandwidth limited oscilloscope and terminated each output with 0.1uF and 10uF capacitors.

- 2.2 Overshoot:
Overshoot should not exceed 10% over nominal voltage.
- 2.3 Rise Time:
50mS max.
- 2.4 Hold-up Time:
10mS min. at 115Vac and full load

3.0 Efficiency

The unit should provide DC conversion efficiency typical 65% at full load, 115Vac input.

4.0 Protection Requirements

- 4.1 Over Voltage Protection:
7V max.



All information contained herein applies only to the above listed part number. Other versions of this part number with electrical or mechanical variations are available. Contact CUI Inc. for further assistance. 9615 SW Allen Blvd., Ste. 103, Beaverton OR 97005
800-275-4899 • 503-643-4899 • Fax: 503-643-6129 • www.cui.com

4.2 Short Circuit Protection:

The unit should be auto-recover in case any short-circuit should occur at any DC output.

5.0 Environmental

5.1 Operating:

Temperature: 0 to 40°C.

Relative Humidity: 20% to 80% RH.

5.2 Storage:

Temperature: -20 to 85°C.

Relative Humidity: 0% to 90% RH.

6.0 EMI Requirement

Meet FCC Part 15 Subpart J Class B.

Meet CNS 13438 Class B.

Meet CISPR Class B.

7.0 Safety Requirements

7.1 Safety Regulation:

The unit should be meet below standards.

UL 1950

CUL

TUV EN60950.

7.2 Dielectric Strength:

UL, CUL: Input and output: 1800Vac @ 3 Second.

TUV: Input and output: 3000Vac @ 3 Second.

8.0 Reliability

8.1 MTBF: 40000 Hours.

8.2 B-Test:

Vibration, Shock, Altitude, Static compression, Drop... etc. Please refer to B-test procedure.

9.0 Dimensions

See assembly drawing.

MODEL NO:

PART NO: DMS033200-P5-ET

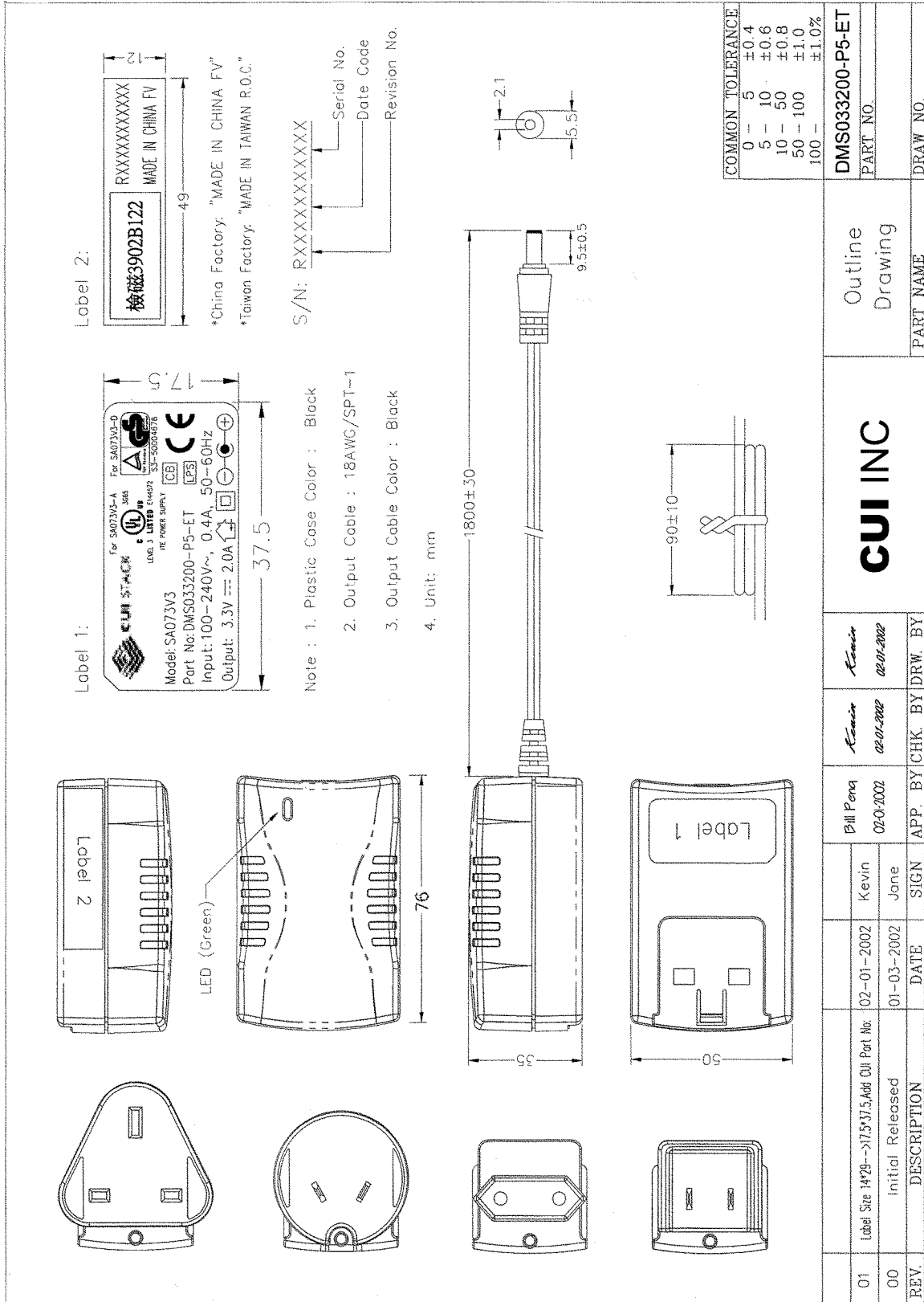


PAGE NO: 4 of 4

UNIT: mm

DATE: 02/04/02

All information contained herein applies only to the above listed part number. Other versions of this part number with electrical or mechanical variations are available. Contact CUI Inc. for further assistance. 9615 SW Allen Blvd., Ste. 103, Beaverton OR 97005
800-275-4899 • 503-643-4899 • Fax: 503-643-6129 • www.cui.com



01	Label Size 14*29-->17.5*37.5, Add CUI Part No:	02-01-2002	Kevin	Kevin	02-01-2002	Kevin	02-01-2002	Outline Drawing	DMS033200-P5-ET
00	Initial Released	01-03-2002	Jane	Jane	02-01-2002	Jane	02-01-2002		PART NO.
REV.	DESCRIPTION	DATE	SIGN	APP.	BY	CHK.	BY	PART NAME	DRAW NO.