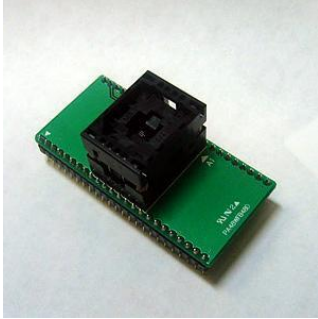


48 PIN BGA SOCKET ADAPTER

Model : PA48WFB48D1

This adapter connects the pins of a 48 ball BGA device to a 48 pin DIP equivalent.
It accepts a BGA device and plug into a DIP socket.



Order No.

► PA48WFB48D1

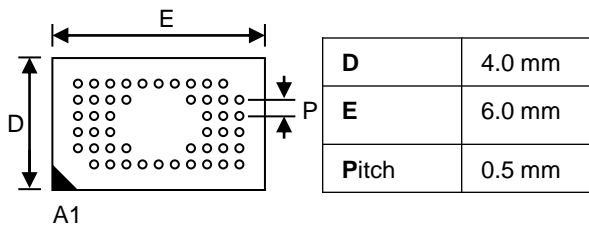
Socket manufacture (Texas Instruments), Socket type (Open)

The PA48WFB48 socket (6 X 5) adapter accepts a device family below :

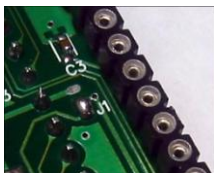
SST SST39WF800A

* Note : This adapter should be used for 1.8V device only (refer to the diagram in below for 3.0V setting)

The BGA socket accepts packages with the dimensions listed below :

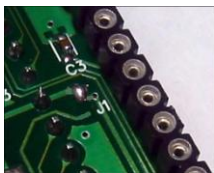


A1



Jumper Default : 1.8v

You can use the adapter without modification



Jumper setting for 3.0v

You must disconnect the current J1 and connect J1 as left picture.

The following chart shows all pin connections Between BGA socket and DIP plug.

BGA48	DIP48	DIP48	BGA48
L4	1	48	L3
L5	2	47	D2
K5	3	46	L1
K4	4	45	K1
K6	5	44	L2
J5	6	43	J1
J6	7	42	K2
J4	8	41	H1
H6	9	40	J2
H5	10	39	G1
G6	11	38	J3
H2	12	37	F1
F6	13	36	K3
E6	14	35	E1
D5	15	34	C3
C4	16	33	D1
D6	17	32	C2
C5	18	31	C1
C6	19	30	B3
B4	20	29	B1
B6	21	28	B2
B5	22	27	A2
A6	23	26	A3
A5	24	25	A4