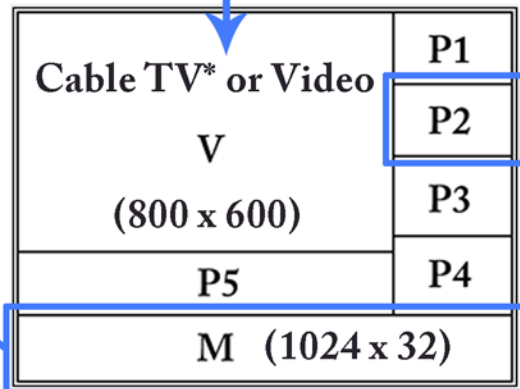


Ceres-86 Networked Digital Signage and much more.

Ceres-86 have the ability to change content via the internet. Subscription services are available for weathers, news, sports and much more.

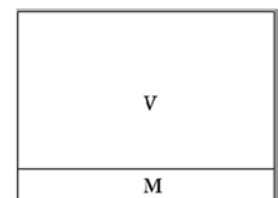
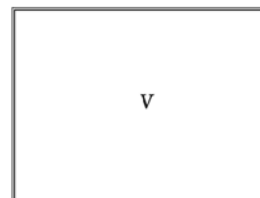


Streaming text can be updated every minute.



XML data can be updated every minute.

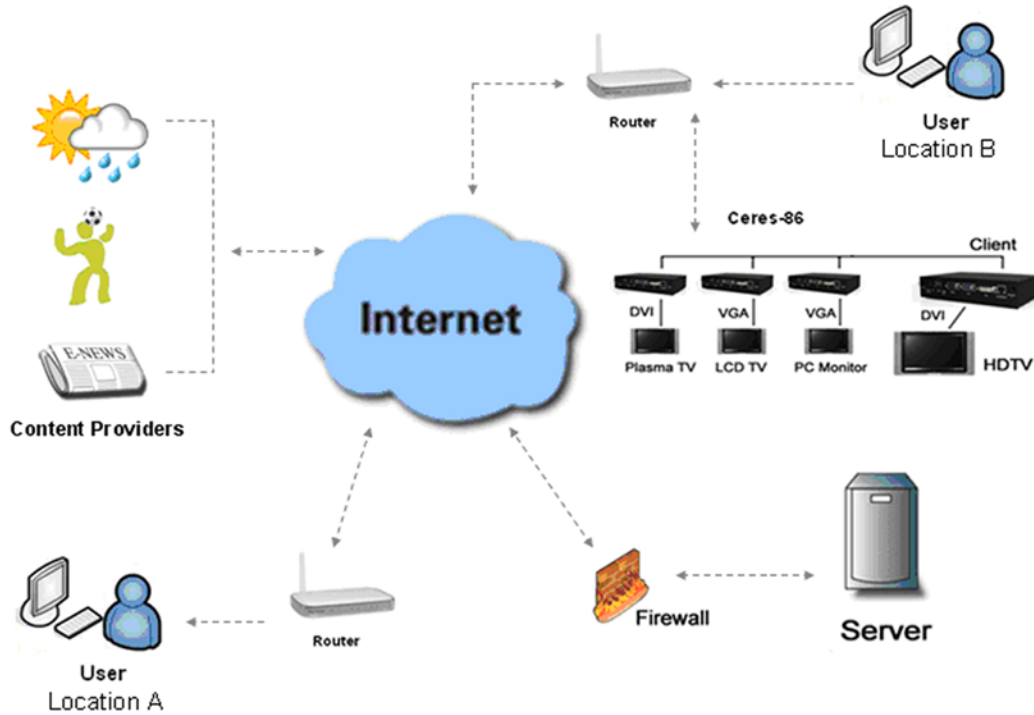
There are various templates available for choice.



* Cable TV function requires installation of TN01 : TV tuner card.

Turnkey Networked Digital Signage Solution

The CERES-86 doesn't require any special network setting, it only need a local router to provide DHCP for automatic connection to a server. All setting are preset at the factory and all that is needed is a broadband connection and A/C power. All the displayed media can be controlled or managed from one central location. The Server can accept Third Party input such as New, Weather or Sports the Content Server and upload it the appropriate display



Specifications

	Ceres-86	Ceres-86TV
LCD Size		TV Tuner
LCD Resolution		
Display Resolution		1080i
Support Media		CF/HDD
Support Playback		WMV*
Playback Mode		Server control
Timer Schedule		Server control
Network Interface		10/100 ethernet
Frame		Metal

*Ceres-86, 86TV, 200N Support

Video Decoding: MPEG-1, MPEG-2 MP @ (720p/1080i)
MPEG-4 ASP@L5(720p)
Windows Media Video(WMV9) Main Profile / Medium Level (720p)
Image: JPEG
BMP (4bpp, 7bpp or 24bpp)
Audio Decoding: Dolby Digital
MPEG-1 and MPEG-2 Layers I, II and III(MP3)
Windows Media Audio 9(WMA9)
Video Output: Stereo (L/R) audio output (Earphone)

