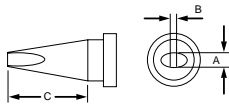
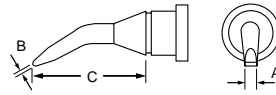


# LT Series Tips for WSP80 Soldering Pencil



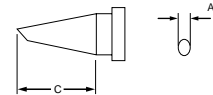
**Chisel**

Cat. No.	A		B		C	
	in.	mm	in.	mm	in.	mm
LTA	0.063	1.60	0.028	0.70	0.380	9.70
LTB	0.094	2.40	0.031	0.79	0.430	10.90
LTC	0.126	3.20	0.031	0.79	0.430	10.90
LTD	0.181	4.60	0.031	0.79	0.430	10.90
LTH	0.031	0.79	0.016	0.40	0.430	10.90
LTK	0.047	1.20	0.016	0.40	0.730	18.50
LTL	0.039	1.00	0.039	1.00	0.790	20.00
LTM	0.126	3.20	0.047	1.20	0.790	20.00



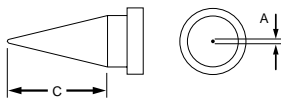
**Bent Chisel**

Cat. No.	A		B		C	
	in.	mm	in.	mm	in.	mm
LT4X	0.047	1.20	0.016	0.40	0.590	15.00
LTAX	0.063	1.60	0.032	0.80	0.500	12.70
LTHX	0.024	0.60	0.016	0.40	0.790	20.00



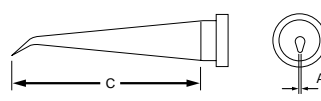
**Single Flat**

Cat. No.	A		B		C	
	in.	mm	in.	mm	in.	mm
LT4W	0.047	1.20	--	--	0.590	15.00
LTF	0.047	1.20	--	--	0.490	12.50



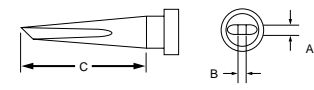
**Round**

Cat. No.	A		B		C	
	in.	mm	in.	mm	in.	mm
LT1	0.010	0.25	--	--	0.430	10.90
LT1L	0.008	0.20	--	--	0.980	25.00
LT1S	0.016	0.40	--	--	0.790	20.00
LTAS	0.63	1.60	--	--	0.380	9.70
LTCS	0.126	3.20	--	--	0.430	10.90
LTS	0.016	0.40	--	--	0.790	20.00



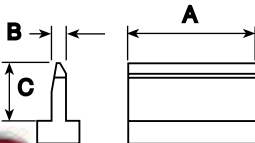
**Bent Round**

Cat. No.	A		B		C	
	in.	mm	in.	mm	in.	mm
LT1LX	0.008	0.20	--	--	0.980	25.00
LT1SLX	0.012	0.30	--	--	0.760	19.20
LT1X	0.010	0.25	--	--	0.370	9.40



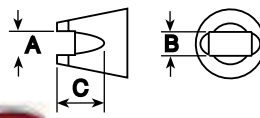
**Knife**

Cat. No.	A		B		C	
	in.	mm	in.	mm	in.	mm
LTKN	0.059	1.50	0.033	0.80	0.730	18.50



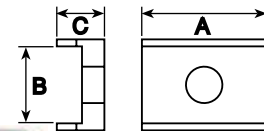
**SMT Blade**

Cat. No.	A		B		C	
	in.	mm	in.	mm	in.	mm
LTSMT01	0.410	10.41	0.022	0.56	0.280	7.11
LTSMT02	0.620	16.75	0.022	0.56	0.280	7.11
LTSMT03	0.820	20.83	0.022	0.56	0.280	7.11



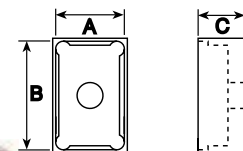
**SMT Slot**

Cat. No.	A		B		C	
	in.	mm	in.	mm	in.	mm
LTSMT04	0.070	1.78	0.195	4.95	0.070	1.78
LTSMT05	0.060	1.52	0.090	2.29	0.070	1.78
LTSMT06	0.100	2.54	0.068	1.73	0.055	1.40
LTSMT07	0.090	2.29	0.190	4.53	0.070	1.78



**SMT Tunnel**

Cat. No.	A		B		C	
	in.	mm	in.	mm	in.	mm
LTSMT08	0.180	4.57	0.200	5.08	0.090	2.29
LTSMT09	0.410	10.41	0.200	5.08	0.090	2.29
LTSMT10	0.450	11.49	0.270	6.86	0.090	2.29
LTSMT11	0.520	13.21	0.375	9.53	0.125	3.18
LTSMT12	0.620	15.75	0.375	9.53	0.125	3.18
LTSMT13	0.720	18.27	0.375	9.53	0.125	3.18
LTSMT14	0.740	18.80	0.365	9.02	0.125	3.18



**SMT Quad**

Cat. No.	A		B		C	
	in.	mm	in.	mm	in.	mm
LTSMT15	0.105	2.67	0.303	7.70	0.150	3.81
LTSMT16	0.410	10.41	0.410	10.41	0.150	3.81
LTSMT17	0.500	12.70	0.500	12.70	0.150	3.81
LTSMT18	0.540	13.72	0.340	8.60	0.150	3.81
LTSMT19	0.750	19.05	0.750	19.05	2.350	5.96
LTSMT20	0.915	23.24	0.680	17.27	0.150	3.81
LTSMT21	0.965	24.51	0.965	24.51	2.350	5.96
LTSMT22	1.155	29.59	1.165	29.59	2.350	5.96