

### TYPES K4A-U, KK4A-U

#### UNIVERSAL TERMINAL

(Four Conductor)  
For Aluminum and  
Copper Conductors

These dual-rated four conductor lugs are constructed from high strength aluminum alloy and electro tin-plated to provide low contact resistance.

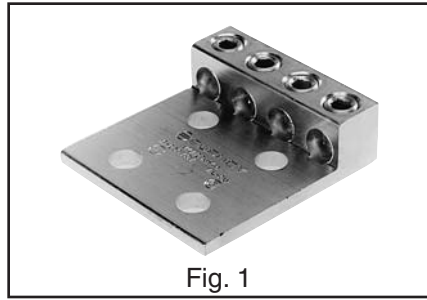


Fig. 1

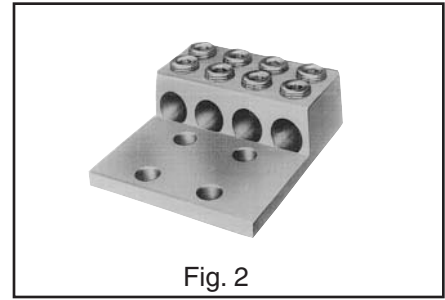
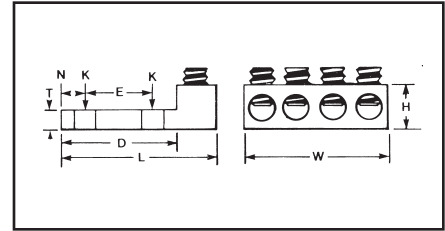


Fig. 2



CATALOG NUMBER*	FIG. NO.	WIRE RANGE ALUMINUM OR COPPER	STUD HOLE SIZE	DIMENSIONS							RECOMMENDED TIGHTENING ▲ TORQUE in-lb
				D	L	N	W	E	T	H	
K4A29U-4N	1	Four: 6 STR. - 250	1/2	3	4	.63	3.69	1.75	.31	1.19	275
K4A31U-4N	1	Four: 6 STR. - 350		3	4.31		5.04		.31	1.38	
KK4A36U-4N	2	Four: 2 STR. - 600		3.34	5.63		5		.44	1.69	375
KK4A40U-4N	2	Four: 300 - 800		3	6.19		6		.56	1.88	

\* "N" indicates NEMA standard stud holes.  
All 4N items ✓ See note page A-2

### TYPES K11A-U, K21A-U, K22A-U

#### UNIVERSAL TERMINAL

For Aluminum and  
Copper Conductors

Dual-rated panelboard lugs are constructed from high strength extruded aluminum alloy and electro tin-plated to provide low contact resistance.

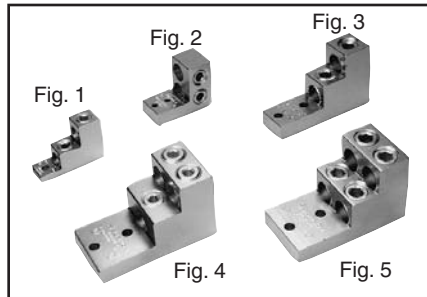


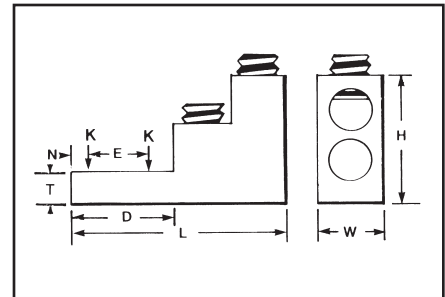
Fig. 1

Fig. 2

Fig. 3

Fig. 4

Fig. 5



CATALOG NUMBER*	FIG. NO.	WIRE RANGE ALUMINUM OR COPPER	STUD HOLE SIZE	DIMENSIONS							RECOMMENDED TIGHTENING ▲ TORQUE in-lb	
				D	L	N	W	E	T	H		
K11A30U*	1	Two: 6 STR. - 300	5/16	.94	3.00	.47	1.00	—	.31	2.00	275	
K11A34U-2	2	Two: 4/0 STR. - 500	1/4	2.31	4.91	.38	1.44	.69	.63	2.38	375	
K11A36U-2	3	Two: 2 STR. - 600	2.91									1.50
K21A36U-2	4	Three: 2 STR. - 600	2.50									
K22A36U-2	5	Four: 2 STR. - 600	2.50									
K11A39U-2	3	Two: 1/0 STR. - 750	1.69									
K22A39U-2	5	Four: 1/0 STR. - 750	3.06									

\* Not CSA Listed.

▲ Listed torque values are for maximum conductor sizes accommodated. Consult UL486 Tables 7-4, 7-5, 7-6 for smaller conductor sizes.