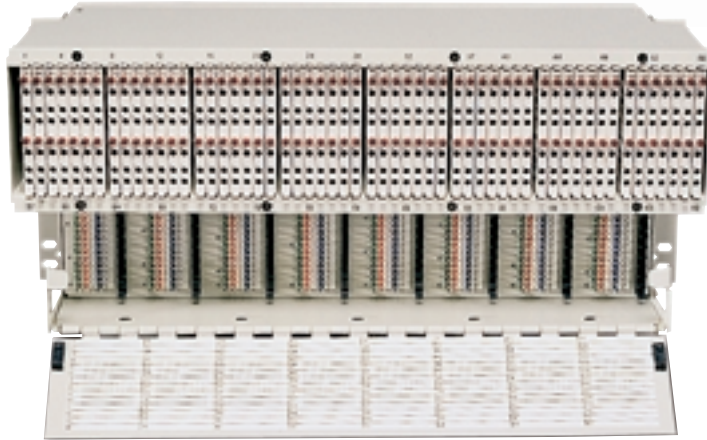


DSX-1

112 Termination Bantam Jack Panel



ADC's 112 Termination Bantam Jack Panel enables service providers to terminate up to 112 T1/E1 lines in an 8" high front cross-connect panel. Using industry standard jack spacing, this panel maximizes signal integrity, density, and reliability. Like other industry-leading DSX-1 products, the 112 termination bantam jack panel features flashing LEDs for easy identification of cross-connected circuits and provides a convenient jack access point for monitoring, testing, and patching—ensuring quick troubleshooting, service restoration, and circuit reconfiguration.

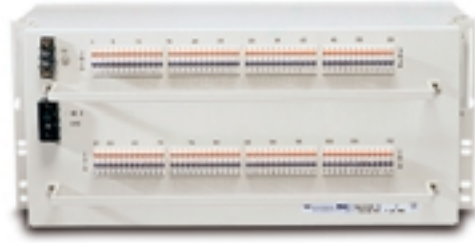
Features:

- Supports 112 terminations per panel, allowing lines to be conveniently configured in multiples of 28
- Flashing LEDs enable easy identification of cross-connected circuits
- Fully loaded chassis available for simplified ordering
- Backed by ADC quality and customer service support

112 Termination Bantam Jack Panel

Common Features

- 112 termination bantam jack panel
- Front wire-wrap cross-connections
- Two rear cable support bars
- 4" recess mounting
- Two 5" x 4" vertical jumper rings
- Red flashing LEDs



Rear View

Fully Loaded Chassis

Ordering Information

Jack Features	Designation	Rear In/Out Cabling	Dimensions (W x H x D)	Color	Catalog Number
Non-modular	1-112	Wire-wrap	19"/23" x 8.75" x 8" (48.26/58.42 x 22.22 x 20.32 cm)	Putty	D1M-5B1008
Non-modular	1-112	Wire-wrap	19"/23" x 8.75" x 8" (48.26/58.42 x 22.22 x 20.32 cm)	Black	D1M-5B1010
Non-modular	1-112	64 pin connectorized receptacle	19"/23" x 8.75" x 8" (48.26/58.42 x 22.22 x 20.32 cm)	Putty	D1M-5B1011
Modular	1-112	Wire-wrap	19" x 8.00" x 11.75" (48.26/58.42 x 20.32 x 29.85 cm)	Putty	D1M-1C0050*

* Panel includes 56 AUX-0X0171 dual circuit cards and has 5" recess mounting.



Web Site: www.adc.com

From North America, Call Toll Free: 1-800-366-3891 • Outside of North America: +1-952-938-8080 Fax: +1-952-946-3292

For a complete listing of ADC's global sales office locations, please refer to our web site.

ADC Telecommunications, Inc., P.O. Box 1101, Minneapolis, Minnesota USA 55440-1101

Specifications published here are current as of the date of publication of this document. Because we are continuously improving our products, ADC reserves the right to change specifications without prior notice. At any time, you may verify product specifications by contacting our headquarters office in Minneapolis. ADC Telecommunications, Inc. views its patent portfolio as an important corporate asset and vigorously enforces its patents. Products or features contained herein may be covered by one or more U.S. or foreign patents.

