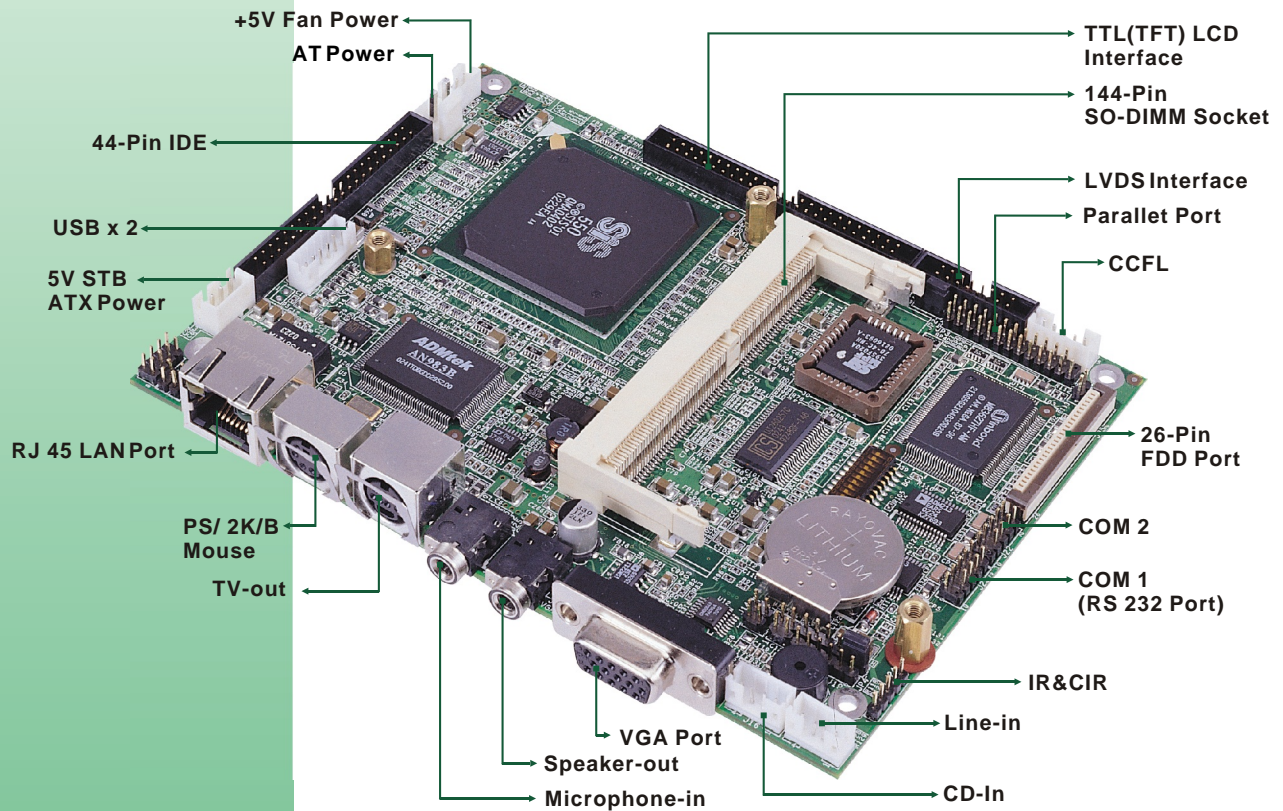
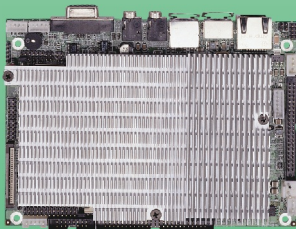


# EBC 350

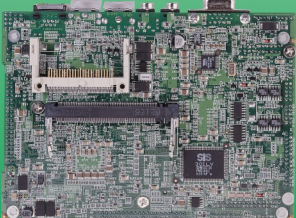
3.5" SoC(System on chip)Low Power x86/MMX Comptible Embedded Controller w/CPU/VGA/TV-out/LAN/Audio/MPEG 2



EBC 350 with Heatsink



Back-view



## Features

- ◆ Integrated x86/MMX compatible processor with fan-less features
- ◆ SiS55X SoC(System on chip) chipset
- ◆ Max. 512MB SDRAM memory in 1 SO-DIMM slot
- ◆ AGP 4X compatible, Direct DVD to TV playback (Optional), TTL TFT LCD interface
- ◆ Single ADMTek AN983B 10/100 Mbps fast Ethernet LAN port
- ◆ AC 97 ver.2.0 Audio
- ◆ TV-out and S-video port (Optional)



# EBC 350

## Specifications

### Form Factor

- 3.5" size drive foot-print
- PCI V2.2 compliant

### CPU

- Integrated x86/MMX compatible processor

### Memory

- Max. 512MB SDRAM memory, 144-pin SO-DIMM x1

### BIOS

- Award system BIOS
- APM (Advanced Power Management) support
- ACPI (Advanced Configuration & Power Interface) support
- Optional software shutdown and wake on LAN function (5Vsb power is required)
- 4M bits flash ROM

### Chipset

- On-board SiS55x SoC (System-on-Chip)

### On-board VGA

- AGP 4X compliant / fully DirectX 8 compliant
- Supports shared system memory up to 128 MB
- 128-bit 2D engine with a full instruction set
- 2 Independent Overlay Windows with blending/scaling functions
- Supports OSD/PIP/EPG and dual view functions
- Optional TV-out and LVDS LCD interface for EBC350A/EBC350LT only
  - Cooperate with "SiS301LV video bridge" to support NTSC/PAL video output, LVDSLCD
  - Supports two independent video Window with overlay function and scaling factors
  - RCA TV-out & S-video output
- Optional Advanced H/W MPEG II Hardware accelerator- for EBC350A only
  - SiS552 SoC supports this function
  - Optional DVD accelerator: MPEG-2 ISO/IEC 13818-2 MP@ML and MPEG-1 ISO/IEC 11172-2

### On-board LAN

- ADMTEK AN983B Ethernet LAN port x1
- Full duplex compliant with IEEE802.3X
- Boot from LAN function
- Wake-up from LAN

### On-board Audio

- Chipset and AC97 ver. 2.0 compliant interface, Multi-stream Direct Sound and Direct Sound 3D acceleration

### I/O Ports

- USB port x2
- Buzzer x1
- Audio Interface:
  - Internal - CD audio-in, Line-in,
  - External - Microphone-in, speaker-out (Amplifier 1.5W)
- RJ45 with LED connector x1
- Video: CRT DB15 x1
- TV-out port x1
- HDD: Ultra DMA 33/66/100 support; 44-pin connector x1
- Internal Compact Flash socket x1
- Serial port: SIO (compatible 16C550) x2, 10-pin header x2, support RS232/422/485
- Parallel port: PIO x1, 26-pin connector support EPP/ECP
- Slim FDD controller: 26-pin connector x1
- PS/2 keyboard/Mouse: 6-pin mini DIN connector
- Digital I/O: 8x TTL DIO
- I<sup>2</sup>C: 3-pin header x1 (one pin for GND)

- Reset SW: 2-pin header x1
- IDE active LED: 2-pin header x1
- ATX power SW: 2-pin header x1
- Power cable connected to panel (5V or 3V): 3-pin power header x1
- 2-pin IDE Active LED header x1

### System Monitor:

- Super I/O support system monitor
- 5 voltage (for +3.3V, +5V, +12V, Vcore and +2.5V)
- Monitor CPU temperature
- Driver support: Window<sup>®</sup> 95/98/2000, Windows<sup>®</sup> NT4.0/2000

### Real time clock

- On-chip RTC back-up battery x1
- External Li-Ion battery x1

### Watchdog Timer

- Watchdog timeout programmable from 1 to 255 second/minute

### Bus expansion

- Mini-PCI socket

### Dimensions

- 143mm(L) x 102mm(W)

### Power requirements

- AT mode:
  - 2-pin power input connector
  - Power cable: big 4P to 2P (5V, GND)

Pin define	Voltage	Power requirement
PIN 1	+5V	4A (typical)
PIN 2	GND	

ATX mode:

- 2-pin header for power switch button
- On-board 3-pin Jst connector to receive the 5Vsb, PS\_ON, GND
- Power cable: ATX power connector to 2P (5V, GND) + 3-pin (5Vsb, PS\_ON, GND)

Pin define	Voltage	Power requirement
PIN 1	+5V	4A (typical)
PIN 2	GND	---
3 PIN Jst	+5Vsb	1A (typical)

### Environments

- Operating temperature: 0°C to 60°C
- Storage temperature: -20°C to 80°C
- Relative humidity: 10% to 90% (Non-condensing)

### Certification

- CE
- FCC

## Order Information

### EBC 350

- 3.5" Low Power Embedded Board w/SiS Soc550/ TTL LCD / Audio/LAN x1

### EBC 350LT

- 3.5" Low Power Embedded Board w/SiS Soc550/ TTL LCD / LAN x1 / TV out / Audio / LVDS LCD / Dual Independent Display

### EBC 350A

- 3.5" Low Power Embedded Board w/SiS Soc552/ TTL LCD / LAN x1 / TV out / Audio / LVDSLCD / Dual Independent Display/ MPEG II Hardware Accelerator