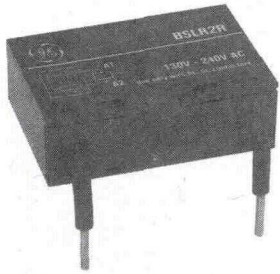




C-2000™ Contactors & Starters Accessories

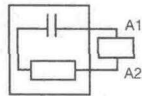


Surge Suppressor

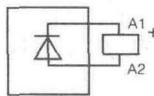
For suppression of disturbances in circuit voltage occurring upon opening of the contactor. Mounts directly on the top of the coil.

For Use With	Surge Suppressor Type	Voltage	Catalog No.	List Price, GO-10C2
5-25 Hp ac (CL00, CL01, CL02, CL25, CL04, CL45)	RC	24-48 Vac 50-127 Vac 130-240 Vac	BSLR2G BSLR2K BSLR2R	\$24.00 24.00 24.00
30-75 Hp ac (CL06, CL07 CL08, CL09, CL10)	RC	24-48 Vac 50-127 Vac 130-240 Vac	BSLR3G BSLR3K BSLR3R	24.00 24.00 24.00
5-25 Hp DC (All CL contactors)	Diode	12-600 VDC	BSLDZ	24.00
5-75 Hp AC/DC (All CL contactors)	Varistor	24-48 Vac, dc 50-127 Vac, dc 130-250 Vac, dc 380-500 Vac, dc	BSLV3G BSLV3K BSLV3R BSLV3U	24.00 24.00 24.00 32.00

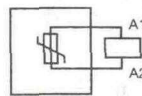
Note: Surge suppression is built into CK electronic coil module.



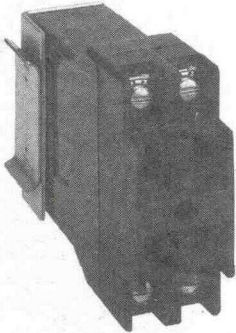
RC



Diode



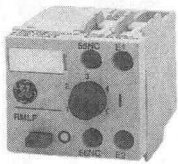
Varistor



Amplifier

Provides for low level signals to operate contactor while control coils operate at the line voltage. Two forms are available: a panel-mount form (for CK contactors) and a side-mount form (for CL contactors).

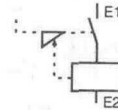
For Use With	Catalog No.	List Price, GO-10C2
CL Contactors	CLXA01	GO-10C2 \$73.00
CK Contactors	CR305X112P	GO-10G 54.00



Mechanical Latch Block

Mechanical latch block is used to convert a standard contactor into a latched contactor. Easy to mount, it clips onto front face of contactor. Contact Rating: A600, Q600.

For Use With	Voltage Application	Catalog No.	List Price, GO-10C2
All CL Contactors	50/60 Hz and DC	RMLF*	\$70.00



RMLF*

Suffix	D	G	J	N	U	Y
Release Voltage 50/60 Hz/dc	24-32	42-48	110-125	208-277	380-480	500-600

Note: Unlatching coil is rated for intermittent duty. The latch block features an integral coil contact to clear the circuit after unlatching.

References:

Instructions
GEH-5517 Amplifier CLXA01

Overload Relays pages 3-8, 3-9
Accessories pages 3-10 to 3-16
Enclosures pages 3-17 to 3-19
Technical Data pages 3-36 to 3-44