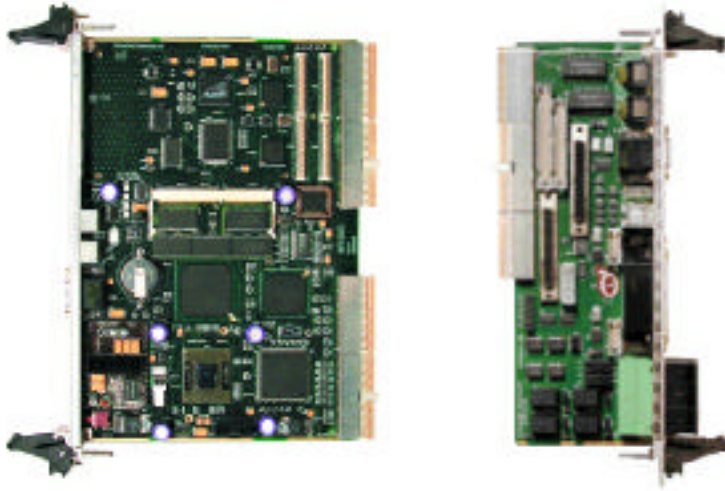


# CompactPCI Single Board Computer

# CPC8610



- Embedded Intel Pentium III BGA2 Processor up to 700 MHz
- Intel 440BX Chipset with 100MHz FSB
- 32-bit / 33MHz PCI Bus
- Up to 256 MB of SDRAM
- PCI Video
- Dual PCI 10/100 Base-TX Ethernet
- PCI Enhanced Ultra ATA IDE Controller
- 2 Floppy, 2 Serial, and 1 Parallel Port
- Rear USB Port
- System Monitor

## SPECIFICATIONS:

### PROCESSOR

INTEL Embedded Pentium III (BGA2) with support for 100MHz front side bus speeds.

### MEMORY

1 bank of 72 bit (144 pin) SODIMM, up to 128MB of SDRAM, with ECC Support

### CACHE

16KB L1, 128KB L2 integrated on-die

### PCI BUS SPEED

32 Bit / 33MHz PCI Bus Speed

### BIOS

DTI Enhanced PHOENIX BIOS, Plug-n-Play compliant

### PCI IDE

EIDE support, PIO modes 0 to 4, bootable CD-ROM using rear panel I/O CPI606

### PCI ETHERNET

Dual 10/100 Base-T auto-negotiating Intel 82559 Controllers

### PCI VIDEO

C&T 69000 with 2MB integrated video memory using rear panel I/O CPI606

### USB

UHCI compatible host controller port support for rear USB port using rear panel I/O CPI606.

### PMC SITE

Support for one PCI Mezzanine Site

### REAL TIME CLOCK

Includes 114 bytes CMOS RAM with long life battery

### MEMORY

The CPC8610 supports up to 128MB of system memory using one standard 144-pin PC-100 SDRAM SODIMM. The BIOS automatically sizes and configures the memory for optimal performance.

### CACHE

In addition to the 16KB of primary (L1) cache, a 128KB secondary (L2) on-die cache is integrated into the Embedded Pentium III (BGA2) processor

### COMPACT PCI BUS

The CPC8610 provides direct support for up to 7, expansion CompactPCI slots. Each of these slots provide support for PCI mastering devices.

### SYSTEM MONITOR

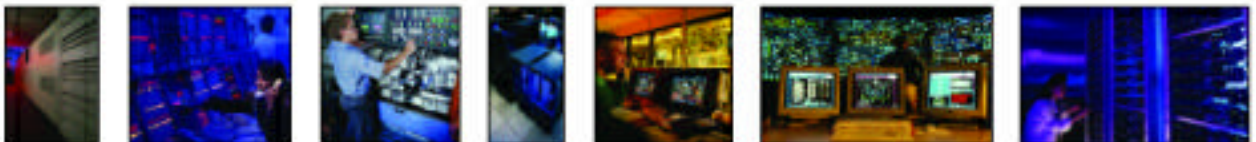
The CPC8610 includes LM87 hardware system monitor. This System Monitor monitors CPU temperatures and CPU fan speeds. The System Monitor also monitors all the system critical voltages

### I/O

All CPC8610 I/O connections are routed to the P4 and P5 connectors for connection to DTI's rearpanel I/O board, the CPI606.

### PHYSICAL

6U size board (160mm x 233.35mm), 4HP. Support for rear-panel I/O connections using DTI's CPI606 rear-panel I/O module.



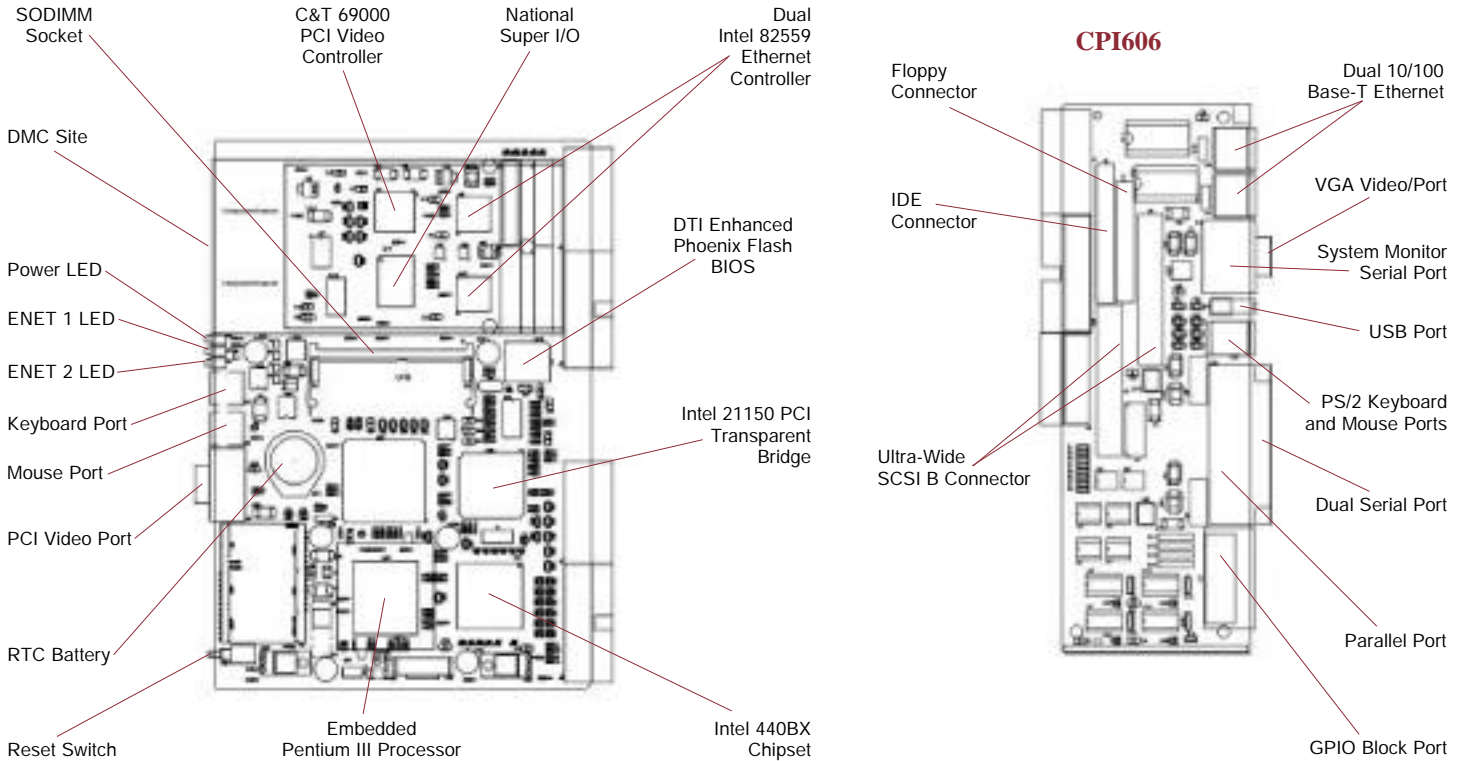
 **Diversified  
Technology**  
An Ergon Co.

[www.dtims.com](http://www.dtims.com)

1.800.443.2667

# CPC8610

# CompactPCI Single Board Computer



## CPC8610

The CPC8610 is a single board computer designed to fit into a single cPCI system slot. The CPC8610 features the latest Intel CPU, the Embedded Pentium III (BGA2), in a CompactPCI form factor. The CPC8610 is based on Intel's 440BX chipset. One standard 144-pin SODIMM socket is provided to support up to 128MB of system memory. DIMM sizes from 1MB x 72 to 32MB x 72 are supported, giving a memory range from 8MB to 128MB. SDRAM memory is supported. Single-bit error correction (ECC) is available using standard parity SODIMMs.

Dual Intel 82559 Ethernet controllers are integrated onboard. This PCI ethernet interface provides a fully auto-negotiating 10 Base-T / 100 Base-TX connection over standard UTP-5 data grade twisted-pair cable up to 100 meters in length. Support is provided for full duplex operation, allowing effective data rates to reach 20 Mbps and 200 Mbps, respectively.

The CPC8610 also features National LM87 for monitoring of system critical variables like voltage, temperature, and CPU fan operation.

A PCI EIDE controller on the CPC8610 gives excellent performance with all high speed IDE drives and also supports 32-bit access, LBA mode, and bootable CD-ROM's.

The CPC8610 incorporates a single PMC Site. The PMC Site is used for adding additional peripheral interfaces to the CPC8610. The PMC Site is connected to the host PCI Bus and operates at 32 Bit / 33 MHz. Standard ISA bus peripherals like a PS/2 keyboard/mouse controller, Real Time Clock, floppy controller, RS-232 serial ports, ECP/EPP parallel port and field upgradable Flash BIOS are also integrated onto the CPC8610.

The CPC8610 provides enhanced 3D graphics performance by utilizing a C&T 69000 video controller. The video controller

provides desktop graphics with full feature high end performance up to extended VGA mode.

The CPC8610 is designed for operation in CompactPCI passive backplane systems. For completely cableless chassis, all CPC8610 I/O connections are routed to the P4 and P5 connectors for connection to DTI's rear-panel I/O board, the CPI606. DTI offers several CompactPCI backplane choices. Call factory for details.



All products are shipped FOB factory (MS). Specifications subject to change without notice. Trademarks are the property of their respective owners. Copyright 2001 by Diversified Technology. All rights reserved.

**For more information or to order, please contact us.**



**www.dtims.com**

1.800.443.2667

476 Highland Colony Parkway • Ridgeland, MS 39157

