

Process Air Heaters

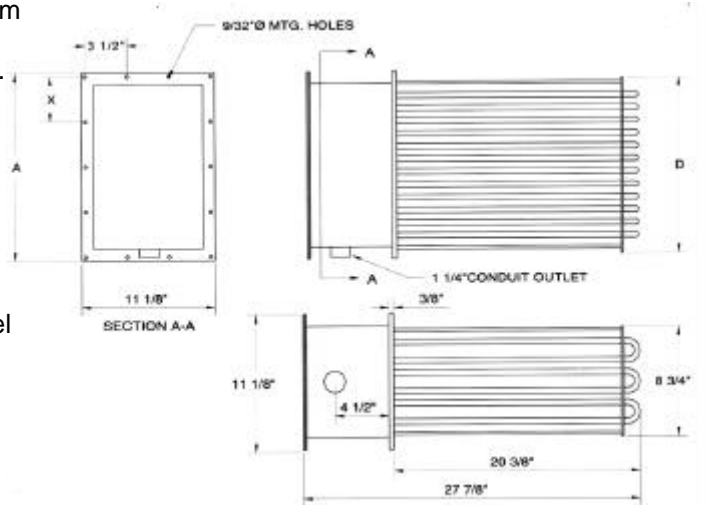
Type IDH - 20 Watts/sq.in.

APPLICATIONS

Type IDH process air heaters are for use where high temperature air is required. A minimum of 300 fpm must be maintained and the maximum outlet temperature should be limited to 800° F without reducing the watt-density of the heater.

STANDARD FEATURES

Incoloy sheathed tubular heaters rated 20 watts/sq. in., .475 inch diameter, stainless steel frame, potted terminals, and a moisture resistant terminal housing. One type K (ungrounded) thermocouple is integrally mounted into terminal enclosure and clamped to the sheath of one element. Thermocouple leads must be field connected to a "high limit control" which is not included in this heater but is available as a separate item.



Length: 20.375

Dimension T: 8.75

Gaumer Catalog Number	kW	Volts	Qty Circuits	Qty Heaters	(A) Flange Length	(D) Bundle Length	(X) Flange Holes C/L	Qty Holes	Weight (lbs.)
IDH-6-2	6	240	1	6	5-5/8	3-5/8	2-1/2	10	29
IDH-6	6	480	1	6	5-5/8	3-5/8	2-1/2	10	29
IDH-12-2	12	240	1	12	7-5/8	5-5/8	3-1/2	10	36
IDH-12	12	480	1	12	7-5/8	5-5/8	3-1/2	10	36
IDH-18-2	18	240	1	18	9-5/8	7-5/8	3	12	44
IDH-18	18	480	1	18	9-5/8	7-5/8	3	12	44
IDH-24-2	24	240	2	24	11-5/8	9-5/8	2-3/4	14	52
IDH-24	24	480	1	24	11-5/8	9-5/8	2-3/4	14	52
IDH-30-2	30	240	2	30	13-5/8	11-5/8	3-1/4	14	61
IDH-30	30	480	1	30	13-5/8	11-5/8	3-1/4	14	61
IDH-36-2	36	240	2	36	15-5/8	13-5/8	3-3/4	14	70
IDH-36	36	480	1	36	15-5/8	13-5/8	3-3/4	14	70
IDH-42-2	42	240	4	42	17-5/8	15-5/8	4-1/4	14	79
IDH-42	42	480	2	42	17-5/8	15-5/8	4-1/4	14	79

Process Air Heaters

Type IDH - 20 Watts/sq.in.

Length: 20.375

Dimension T: 8.75

Gaumer Catalog Number	kW	Volts	Qty Circuits	Qty Heaters	(A) Flange Length	(D) Bundle Length	(X) Flange Holes C/L	Qty Holes	Weight (lbs.)
IDH-48-2	48	240	4	48	19-5/8	17-5/8	4-3/4	14	88
IDH-48	48	480	2	48	19-5/8	17-5/8	4-3/4	14	88
IDH-54-2	54	240	4	54	21-5/8	19-5/8	5-1/4	14	97
IDH-54	54	480	2	54	21-5/8	19-5/8	5-1/4	14	97
IDH-60-2	60	240	4	60	23-5/8	21-5/8	5-3/4	14	106
IDH-60	60	480	2	60	23-5/8	21-5/8	5-3/4	14	106
IDH-72	72	480	2	72	25-5/8	23-5/8	5	16	130
IDH-84	84	480	4	84	27-5/8	25-5/8	4-1/2	18	140
IDH-96	96	480	4	96	29-5/8	27-5/8	4-13/16	18	155
IDH-108	108	480	4	108	31-5/8	29-5/8	5-3/16	18	170
IDH-120	120	480	4	120	33-5/8	31-5/8	5-1/2	18	190

Dimension T: 17.75

Gaumer Catalog Number	kW	Volts	Qty Circuits	Qty Heaters	(A) Flange Length	(D) Bundle Length	(X) Flange Holes C/L	Qty Holes	Weight (lbs.)
IDHD-72	72	480	2	72	15-5/8	13-5/8	3-3/4	16	130
IDHD-84	84	480	4	84	17-5/8	15-5/8	4-1/4	16	140
IDHD-96	96	480	4	96	19-5/8	17-5/8	4-3/4	16	155
IDHD-108	108	480	4	108	21-5/8	19-5/8	5-1/4	16	170
IDHD-120	120	480	4	120	23-5/8	21-5/8	5-3/4	16	190

Length: 38

Dimension T: 8.75

Gaumer Catalog Number	kW	Volts	Qty Circuits	Qty Heaters	(A) Flange Length	(D) Bundle Length	(X) Flange Holes C/L	Qty Holes	Weight (lbs.)
IDH-144	144	480	4	72	35-5/8	33-5/8	5	20	220
IDH-168	168	480	6	84	37-5/8	25-5/8	5-9/32	20	168
IDH-192	192	480	6	96	39-5/8	37-5/8	5-9/16	20	192
IDH-216	216	480	6	108	41-5/8	39-5/8	5-27/32	20	216
IDH-240	240	480	6	120	43-5/8	41-5/8	5-3/8	22	216

Dimension T: 17.75

Gaumer Catalog Number	kW	Volts	Qty Circuits	Qty Heaters	(A) Flange Length	(D) Bundle Length	(X) Flange Holes C/L	Qty Holes	Weight (lbs.)
IDHD-144	144	480	4	72	15-5/8	13-5/8	3-3/4	16	220
IDHD-168	168	480	6	84	17-5/8	15-5/8	4-1/4	16	240
IDHD-192	192	480	6	96	19-5/8	17-5/8	4-3/4	16	265
IDHD-216	216	480	6	108	21-5/8	19-5/8	5-1/4	16	290
IDHD-240	240	480	6	120	23-5/8	21-5/8	5-3/4	16	330
IDHD-288	288	480	8	144	27-5/8	25-5/8	4-1/2	20	360
IDHD-336	336	480	12	168	31-5/8	29-5/8	3-7/8	24	390
IDHD-384	384	480	12	192	35-5/8	33-5/8	4-3/8	24	420
IDHD-432	432	480	12	216	39-5/8	37-5/8	4-7/8	24	450
IDHD-480	480	480	12	240	43-5/8	41-5/8	5-3/8	24	480