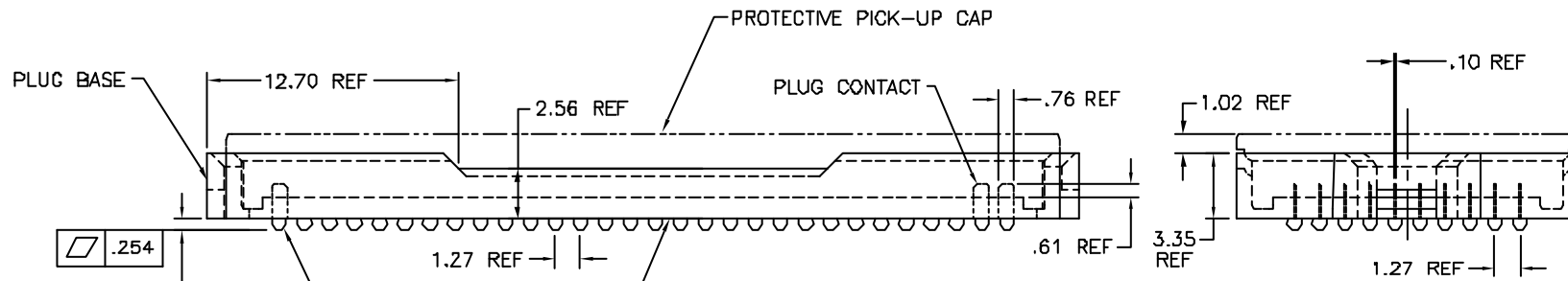
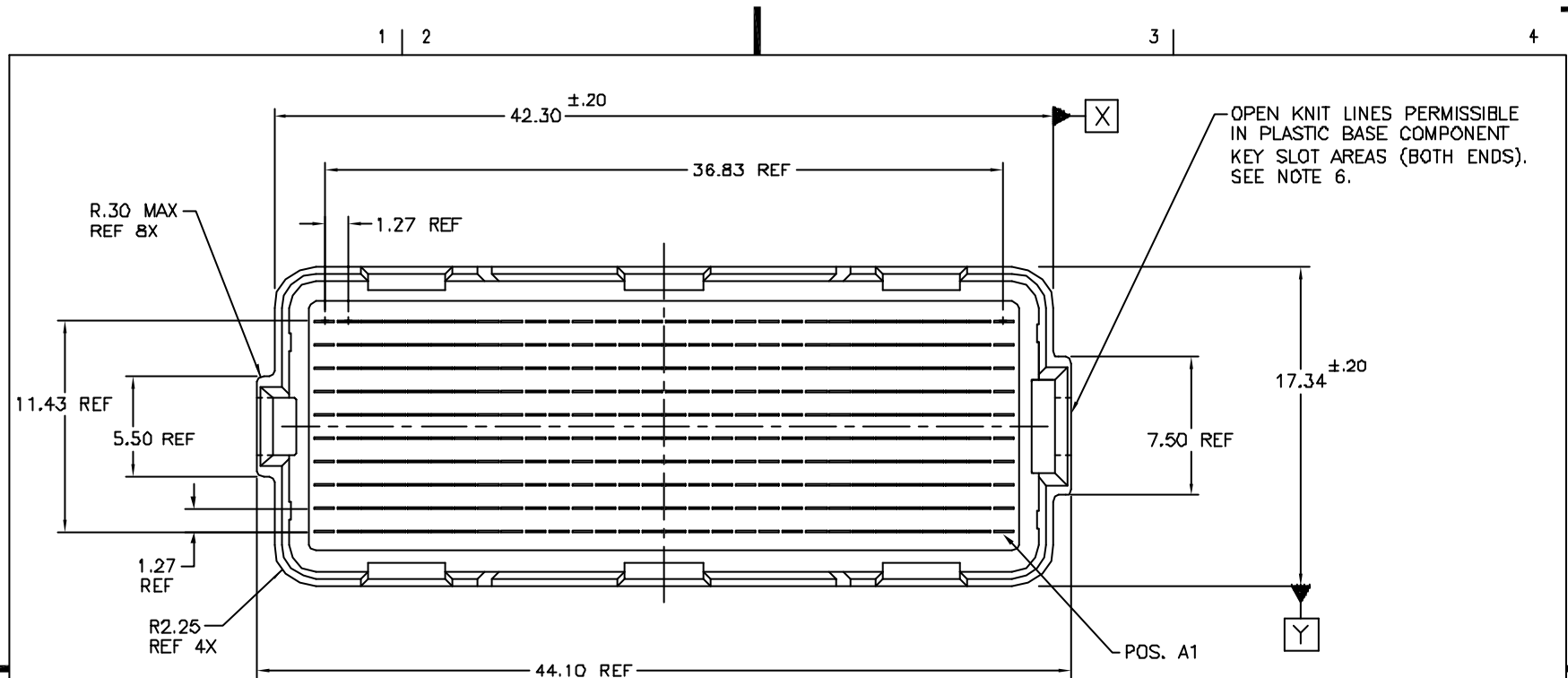


Tous droits strictement réservés. Reproduction ou communication à des tiers interdite sans quelque forme que ce soit sans autorisation écrite du propriétaire. Propriété de FCI. Droits de reproduction FCI.

All rights strictly reserved. Reproduction or issue to third parties in any form whatever is not permitted without written authority from the proprietor. Property of FCI. Copyright FCI.



CONTINUOUS OPEN KNIT LINE CRACKS (TRAVERSING THE ENTIRE BODY LENGTH OF THE CONNECTOR) WHICH CAUSE CRITICAL-TO-FUNCTION DIMENSIONAL CHANGES THAT AFFECT THE CONNECTORS MECHANICAL ALIGNMENT FEATURES ARE NOT PERMISSIBLE. SEE NOTE 6.

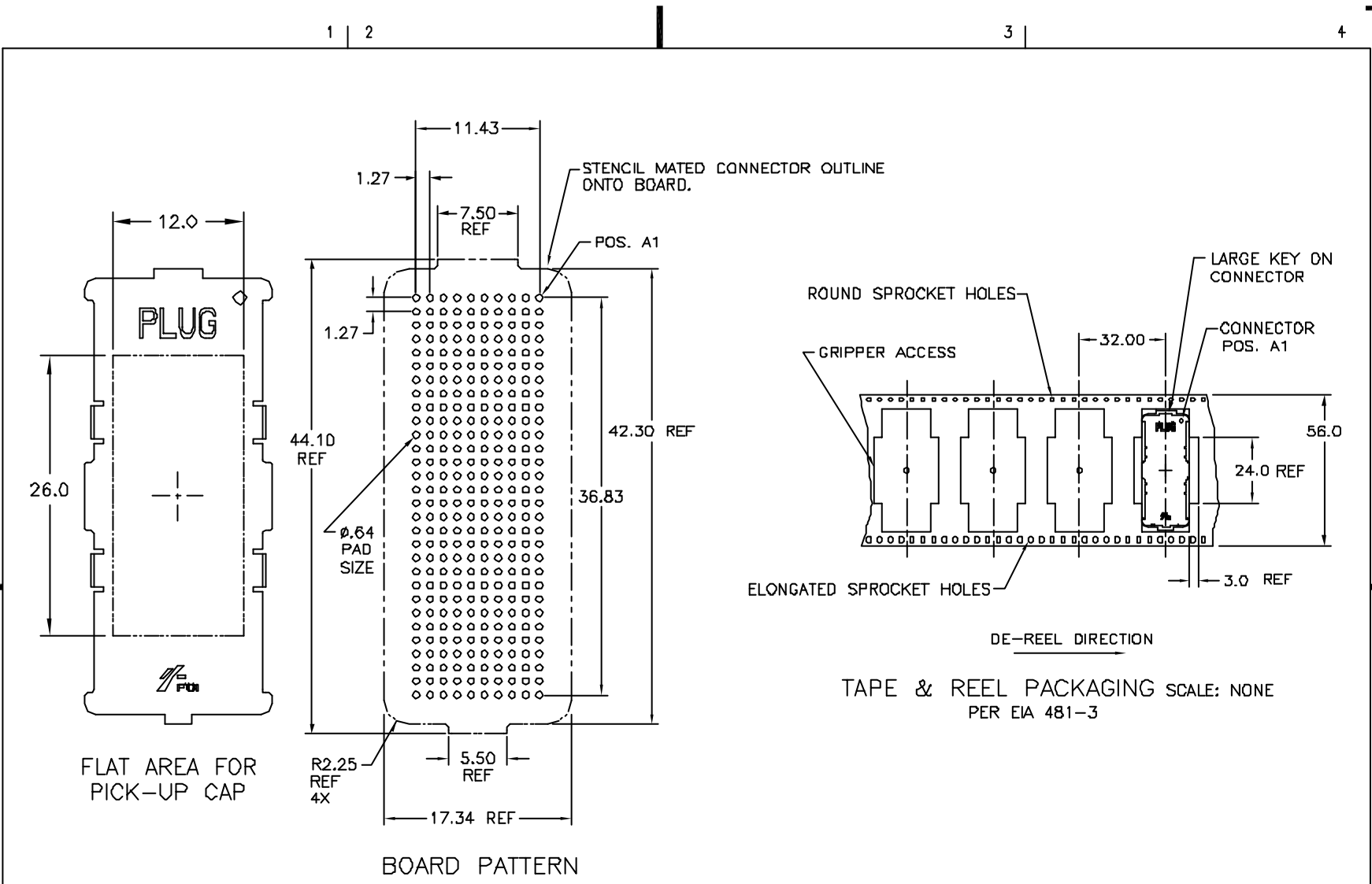
Ø.760 SOLDER BALLS
NOTE 2
⊕ Ø.30 X Y

mat'l. code	SEE NOTE 1.			tolerances unless otherwise specified		CUSTOMER COPY	FCI Electronics	
ltr	ech no	dr	date	linear	angles	projection	www.fciconnect.com	
C	V00125	DRW	2/28/00	.XX±.3	0° ±2'		title	
D	V01423	DRW	12/14/00	.XXX±.051			0mm PLUG ASSY	
E	V10232	DRW	8/14/01				10 X 30 = 300 POS.	
F	V20006	DRW	1/7/02				product family MEG-ARRAY	
G	V20092	DRW	4/9/02				code	
H	V03-0890	DAI	6/19/03				213	
J	V04-0940	VS	10/18/01			size		
sheet		revision	J	J	J	A4		84500
index		sheet	1	2	3	3:1		sheet 1 of 3

code code
22526

Tous droits strictement réservés. Reproduction ou communication à des tiers
interdit sans quelque forme que ce soit sans autorisation écrite du propriétaire.
Propriété de c. FCI. Droits de reproduction FCI.

All rights strictly reserved. Reproduction or issue to third parties in any
form whatever is not permitted without written authority from the proprietor.
Property of FCI. Copyright FCI.



FLAT AREA FOR PICK-UP CAP

BOARD PATTERN

TAPE & REEL PACKAGING SCALE: NONE
PER EIA 481-3

mat'l. code SEE NOTE 1.				tolerances unless otherwise specified		CUSTOMER COPY		Electronics www.fciconnect.com		
ltr	ech no	dr	date	linear	.XX±.13	projection	title			
J					.XXX±.051		10 X 30 = 300 POS.			
				angles	0° ±2'		product family	MEG-ARRAY	code	213
				dr	D.WAUGHEN 12.16.98	MM	size	dwg no	213	
				enfr	D.HARPER 12.16.98	scale	A4	84500	sheet	2 of 3
				chr	D.HARPER 12.16.98	2:1				
				appd	D.HARPER 12.16.98					
sheet index	revision sheet									

code code
22526

ACAD

Tous droits strictement réservés. Reproduction ou communication à des tiers interdite sans quelque forme que ce soit sans autorisation écrite du propriétaire. Propriété de c. FCI. Droits de reproduction FCI.

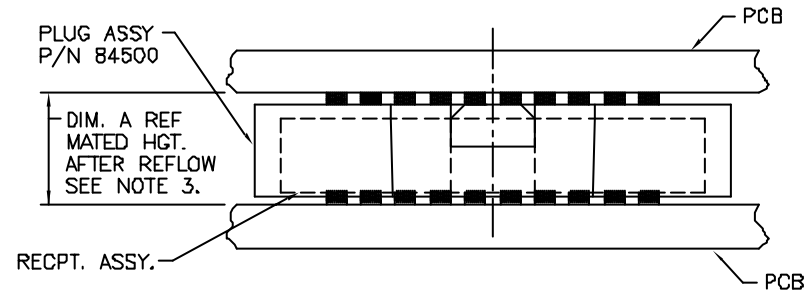
All rights strictly reserved. Reproduction or issue to third parties in any form whatever is not permitted without written authority from the proprietor. Property of FCI. Copyright FCI.

PRODUCT NUMBER	PICK-UP CAP	CONTACT PLATING	SOLDER BALL
84500-002	YES	15u" (.38um) Au OVER Ni	SnPb
84500-002LF			SnAgCu LEAD FREE (7)(8)
84500-102	YES	30u" (.76um) Au OVER Ni	SnPb
84500-102LF			SnAgCu LEAD FREE (7)(8)
84500-202	YES	SEE MATED HEIGHT TABLE (BELOW).	SnPb
84500-202LF			SnAgCu LEAD FREE (7)(8)

NOTES:

- MAT'L**
HOUSING: LCP
CONTACT: COPPER ALLOY

PLATING
CONTACT: (SEE TABLE ON SHEET3)
SOLDER BALL: (SEE TABLE ON SHEET3)
EUTECTIC SnPb OR LEAD FREE
95.5Sn/4Ag/0.5Cu
- SOLDER BALLS WILL NOT BE PERFECT SPHERICAL SHAPE DUE TO REFLOW ATTACHMENT.
- MATED HEIGHT EFFECTED BY CUSTOMER'S PCB PAD SIZE, PLATING, SOLDER REFLOW PROFILE, & SOLDER PASTE.
- PLATING FOR INDICATED -2XX SERIES PART NOS. MEETS THE REQUIREMENTS OF NORTEL NPS25298-2 (CENTRAL OFFICE ENVIRONMENT, 25 YEAR LIFE EXPECTANCY).
- PLATING FOR INDICATED -2XX SERIES PART NOS. IS Au OVER Ni WITH SPECIAL CONTACT GEOMETRY TO MEET REQUIREMENTS OF TELCORDIA GR-1217-CORE: CENTRAL OFFICE ENVIRONMENT.
- KNIT LINE:** SLIGHT VISIBLE MARKS (USUALLY A LINE) INDICATING THE DIRECTION AND MEETING POINT OF PLASTIC RESIN FLOW FRONTS TRAVELING AROUND ANY OBSTRUCTIONS TO THE RESIN FLOW VIA THE REQUIRED MOLD TOOLING.
- FOR PROPER APPLICATION FOLLOW FCI APPLICATION SPECIFICATION GS-20-033 LEAD FREE SOLDER BALLS WILL NOT SOLDER PROPERLY IN A LEADED SOLDER PROCESS DUE TO A HIGHER REFLOW TEMPERATURE. LEAD FREE PRODUCT IS THEREFORE NOT BACKWARDS COMPATIBLE WITH LEADED OR SOME SOLDERING APPLICATIONS. REFERENCE FCI APPLICATION SPECIFICATION
- THIS PRODUCT MEETS EUROPEAN UNION DIRECTIVES AND OTHER COUNTRY REGULATIONS AS DESCRIBED IN GS-22-008 PRODUCT MEETING THIS DIRECTIVE IS IDENTIFIED IN THE LOT CODE NUMBER MARKED ON EACH PART BY HAVING AN "X" IN THE SEVENTH CHARACTER POSITION



DIM. A	RECP.T. ASSY. P/N	-2XX PLATING
4.0	84501	SEE NOTE 4.
5.5	84502	*
8.0	84553	SEE NOTE 5.

* 84502 NOT AVAILABLE IN TELCORDIA/NORTEL VERSION.

MATED HEIGHT AFTER REFLOW IS BASED ON ϕ .64mm PAD (METAL-DEFINED) AND .13mm SOLDER PASTE STENCIL THICKNESS. SEE NOTE 3.

END VIEW - MATED CONNECTORS SCALE: NONE

mat'l. code SEE NOTE 1.				tolerances unless otherwise specified		CUSTOMER COPY		Electronics FCI www.fciconnect.com	
l/r	ecn no	dr	date	linear	.XX±.3	projection	title	10 X 30 = 300 POS.	
J				linear	.XX±.13			product family MEG-ARRAY	
				angles	.XXX±.051			size: dwg no	
				dr	0' ±2'	MM	84500		213
				enrg	D.WAUGHEN 12.16.98	scale	A4	sheet	
				chr	D.HARPER 12.16.98	2:1	3 of 3		
				appd	D.HARPER 12.16.98				
sheet	revision								
index	sheet								

code code
22526

ACAD

PDM: Rev:J

STATUS: Released

Printed: Nov 19, 2004