

d¹

design.

d²

develop.

d³

deploy.

Embedded Planet EP88xS



Features:

- **Processor:** MPC880 or MPC885 at up to 133MHz
- **RAM:** Up to 64MB of SDRAM
- **FLASH:** Up to 32MB of Flash
- **Ethernet:** 10/100 to RJ-45 or expansion bus
- **Serial Ports:** RS-232 port available on header and expansion bus
- **Expansion:** EBC bus brings out CPU signals for “drop-in” CPU module
- **I2C Devices:** Up to 8kB of EEPROM for configuration data
- **Power Supply:** Single 3.3V power supply connection
- **Form Factor:** Credit Card (3.55in x 2.67in)
- **Debug:** JTAG connector for software debug

Flexible Single Board Computer

The EP88xS uses Freescale PowerQUICC I MPC885 and MPC880 processors to create a compact and powerful credit card sized single board computer module. The small form factor and expansion bus capability make the EP88xS the ideal board for implementing a cost-efficient yet powerful embedded CPU module. You can take the CPU design out of your critical path and concentrate on your application specific hardware.

The MPC885 and MPC880 processors feature an integrated PowerPC core and Communications Processor Module (CPM) to provide a scalable computing solution for networked devices. The PowerPC core can run at speeds of 133MHz and provide general purpose control and computing functionality, while the dedicated CPM offloads communications functions such as fast Ethernet, HDLC, and ATM. In addition the MPC885 includes an integrated security engine to accelerate processing of encryption protocols such as AES, DES/3DES, and SHA/MD5/HMAC.

The processor expansion bus on the EP88xS brings all of the processor signals to standard connectors allowing you simple and full access to the power of the processor. Like all Embedded Planet products, the EP88xS can be custom configured to meet your requirements and is volume production ready.

design.

The next generation of connected devices.

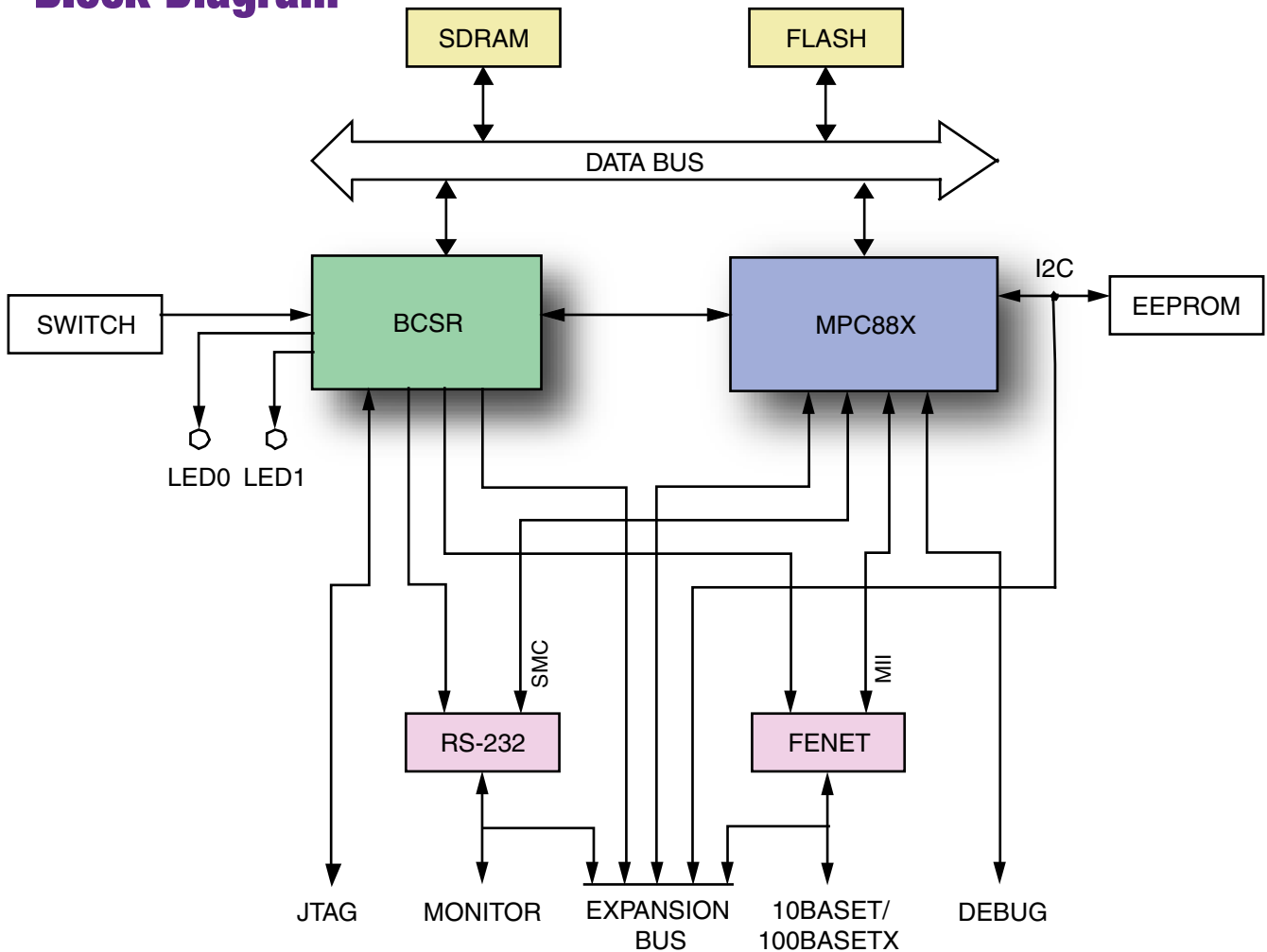
develop.

Your products based on our platform.

deploy.

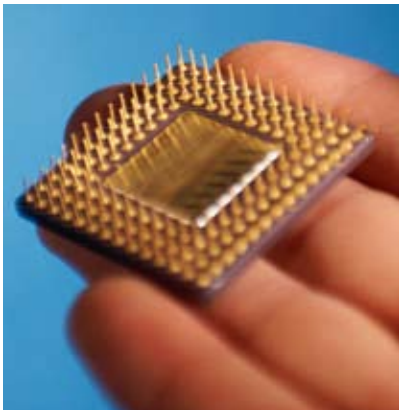
Your solution faster.

Block Diagram



T00257A

Let Us Do The Heavy Lifting



- Embedded Planet offers a complete set of software and hardware training and customization services to go along with our Off-the-Shelf solutions.
- Our training classes in Linux, VxWorks, and Eclipse can help your engineering team shrink their time-to-productivity and help ensure higher quality products.
- Our custom diagnostics tools, Eclipse applications, U-Boot porting, Linux, Green Hills INTEGRITY, and VxWorks BSPs and applications can extend your engineering team and shrink your time to market.
- Contact Embedded Planet to find out how our Professional Services Division can accelerate your project.

This material is the copyright of Embedded Planet 1997-2006. Embedded Planet is a registered Trademark. Other company and product names may be trademarks of their respective owners. Product specifications subject to change without notice.

Contact Embedded Planet sales:
www.embeddedplanet.com or
 email info@embeddedplanet.com
 phone (216) 245-4180