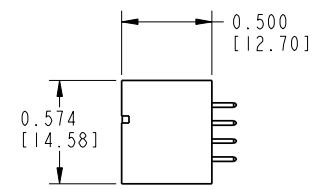
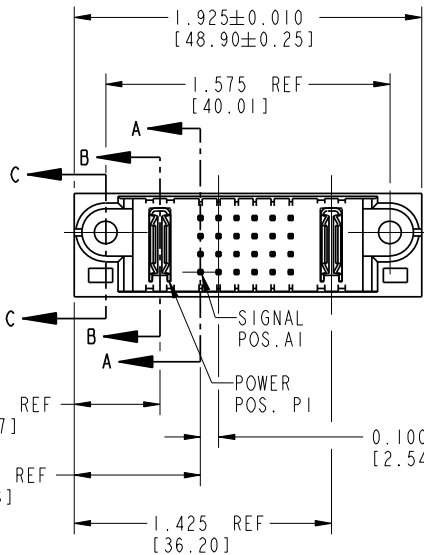
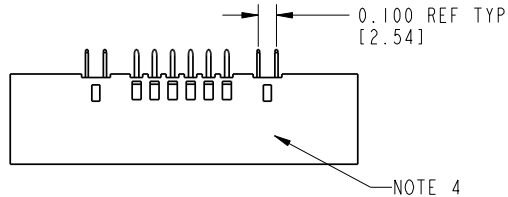


Tous droits strictement reserves. Reproduction ou communication a des tiers interdite sous quelque forme que ce soit sans autorisation écrite du propriétaire. Propriete de c FCI. Droits de reproduction FCI.

All rights strictly reserved. Reproduction or issue to third parties in any form without written authority from the proprietor. Property of FCI. Copyright FCI.



PRODUCT No. 51952-001-- NOTE: 3	ROWS D C B A	POWER	SIGNAL						POWER	
		E1	P1	1	2	3	4	5	6	P2



CODE	DIM "M" ±.010 [0.25]	CONTACT TYPE
E	0.270 [6.86]	SIGNAL
H	0.220 [5.59]	SIGNAL
PA	N/A [N/A]	POWER

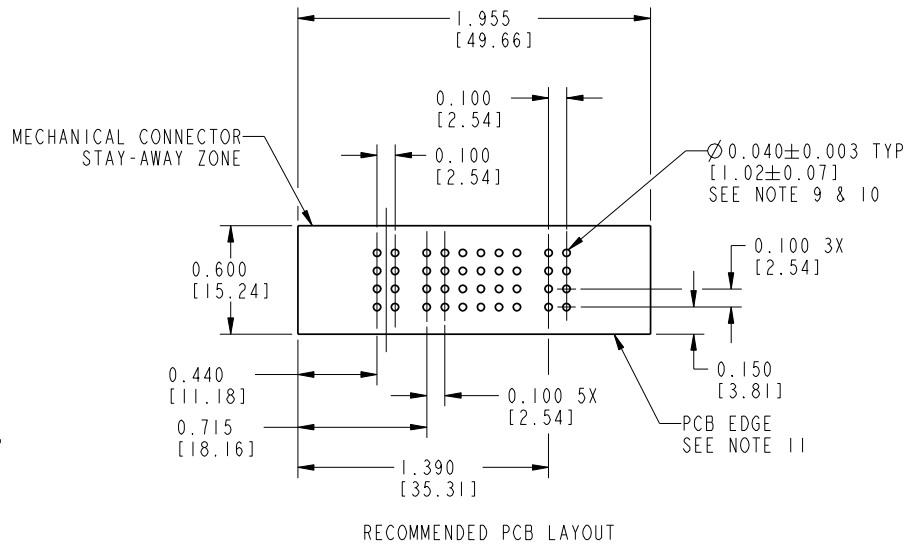
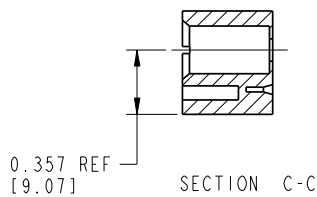
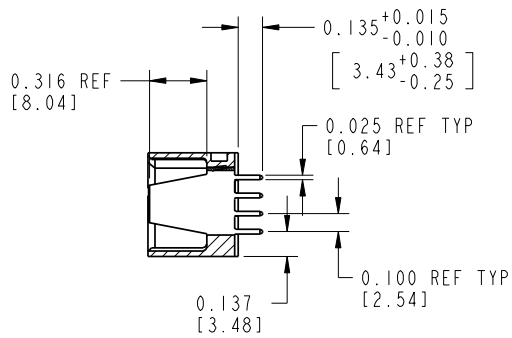
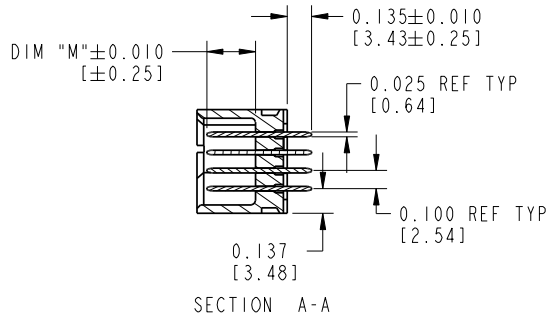
mat'l code		NOTE 1		tolerances unless otherwise specified		CUSTOMER	
lir	ecn no.	dr	date	linear	projection	COPY	
A	V12513	DA1	10/31/01	.XX±.01/0.X±0.3	INCH/MM	www.fciconnect.com	
B	V21104	TAB	10/01/02	.XXX±.005/0.XX±0.13		title IP + 24S + 1P	
C	V03-0093	DA1	05/09/03	.XXX±.002/0.XXX±0.051	scale	VERTICAL SOLDER HEADER	
D	DG05-0240	GuoJW	07/27/05	angles 0°±2°	1:1	product family	PwrBlade
E	DG05-0450	Ryan	11/9/05	dr	J. WITMER	9/19/01	code
				engr	J. ALLISON	9/19/01	213
				chr	J. ALLISON	9/19/01	sheet
				appd	J. ALLISON	9/19/01	1 of 3
sheet index	revision	E	E	E			
	sheet	1	2	3			

A FCI		www.fciconnect.com	
product family		PwrBlade	
size	dwg no	code	
A	51952-001	213	
		sheet	
		1 of 3	
cage code		22526	

Tous droits strictement réservés. Reproduction ou communication à des tiers interdite sans quelque forme que ce soit sans autorisation écrite du propriétaire. Propriété de c FCI. Droits de reproduction FCI.

All rights strictly reserved. Reproduction or issue to third parties in any form whatsoever is not permitted without written authority from the proprietor. Property of FCI. Copyright FCI.

PRODUCT NUMBER
51952-001__
NOTE: 3



mat'l code				SEE NOTE 1	tolerances unless otherwise specified		CUSTOMER		 www.fciconnect.com
lfr	ecn no.	dr	date	linear	.XX±.01/0.X±0.3	COPY		projection	
E					.XXX±.005/0.XX±0.13	INCH/MM		title	
				angles	.XXX±.002/0.XXX±0.051	scale		IP + 24S + 1P	
				dr	0° ± 2°	1:1		VERTICAL SOLDER HEADER	
				enrg	J. WITMER 9/19/01	product family		PwrBlade	
				chr	J. ALLISON 9/19/01	size		code	
				appd	J. ALLISON 9/19/01	A		213	
sheet index		revision sheet				dwg no		sheet	
						51952-001		2 of 3	

cage code 22526

Pro/E

Tous droits strictement reserves. Reproduction ou communication a des tiers interdite sous quelque forme que ce soit sans autorisation écrite du propriétaire. Propriete de c FCI. Droits de reproduction FCI.



All rights strictly reserved. Reproduction or issue to third parties in any form without is not permitted without written authority from the proprietor. Property of FCI. Copyright FCI.

1 | 2

3 |

4

PRODUCT NUMBER
51952-001__
NOTE: 3

NOTES:

1. DIMENSIONS AND TOLERANCES ARE IN ACCORDANCE WITH ASME Y14.5M, 1994 UNLESS OTHERWISE SPECIFIED.

CONNECTOR NOTES:

2. HOUSING MATERIAL: UL 94 V-0 GLASS FILLED HIGH TEMP THERMOPLASTIC
 POWER CONTACT MATERIAL: COPPER ALLOY
 SIGNAL CONTACT MATERIAL: COPPER ALLOY

3. PLATING:

51952-001: SIGNAL PIN: 30u"/0.76um Au OVER 50u"/1.27um Ni ON THE CONTACT AREA
 AND 100u"/2.54um SnPb OVER 50u"/1.27um Ni ON THE TERMINATION AREA
 POWER PIN: 30u"/0.76um Au OVER 50u"/1.27um Ni ON THE CONTACT AREA
 AND 100u"/2.54um SnPb OVER 50u"/1.27um Ni ON THE TERMINATION AREA

51952-001LF: SIGNAL PIN: 30u"/0.76um Au OVER 50u"/1.27um Ni ON THE CONTACT AREA
 AND 78u"/2.00um Sn OVER 50u"/1.27um Ni ON THE TERMINATION AREA
 POWER PIN: 30u"/0.76um Au OVER 50u"/1.27um Ni ON THE CONTACT AREA
 AND 78u"/2.00um Sn OVER 50u"/1.27um Ni ON THE TERMINATION AREA

PART NUMBER 51952-001LF MEETS EUROPEAN UNION DIRECTIVE AND OTHER COUNTRY REGULATIONS AS DESCRIBED IN GS-22-008.

THE HOUSING WILL WITHSTAND EXPOSURE TO 260° PEAK TEMPERATURE FOR 10 SECONDS IN A WAVE SOLDER APPLICATION WITH A CIRCUIT BOARD.

4. "MANUFACTURER'S" NAME, P/N, AND DATE CODE TO APPEAR ON THIS SURFACE

5. PRODUCT SPECIFICATION GS-12-149.
 APPLICATION SPECIFICATION BUS-20-067.

6. PACKAGED IN TRAYS.

PCB NOTES:

7. ALL DIMENSIONS ARE BASIC UNLESS OTHERWISE SPECIFIED.

8. ALL THROUGH HOLES ARE LOCATED WITH A TRUE POSITION OF 0.004 [0.10]

9. ALL HOLE DIAMETERS ARE FINISHED HOLE SIZE

10. $\varnothing 0.0453 \pm 0.0010$ [1.151 \pm 0.025] DRILLED HOLES PLATED WITH
 0.0003 [0.008] MIN SnPb OVER 0.001 [0.03]
 TO 0.003 [0.08] Cu PLATING TO ACHIEVE
 $\varnothing 0.040 \pm 0.003$ [1.02 \pm 0.07] HOLE.

11. CONNECTOR KEEP-OUT ZONE.

mat'l code		NOTE 1		tolerances unless otherwise specified		CUSTOMER		A FCI		www.fciconnect.com	
lfr	ecr no.	dr	date	linear	.XX±.01/0.X±0.3	COPY		projection	title IP + 24S + 1P VERTICAL SOLDER HEADER		
D				angles	.XXX±.005/0.XX±0.13						
				dr	.XXX±.0020/0.XXX±0.051						
				enr	0° ± 2°	INCH/MM		product family PwrBlade		code 213	
				chr	J. WITMER 9/19/01	scale 1:1		size A		sheet 3	
				appd	J. ALLISON 9/19/01			dwg no 51952-001			
sheet index		revision sheet									

A

A

B

B

1 | 2

Pro/E

3 |

cage code 22526

4