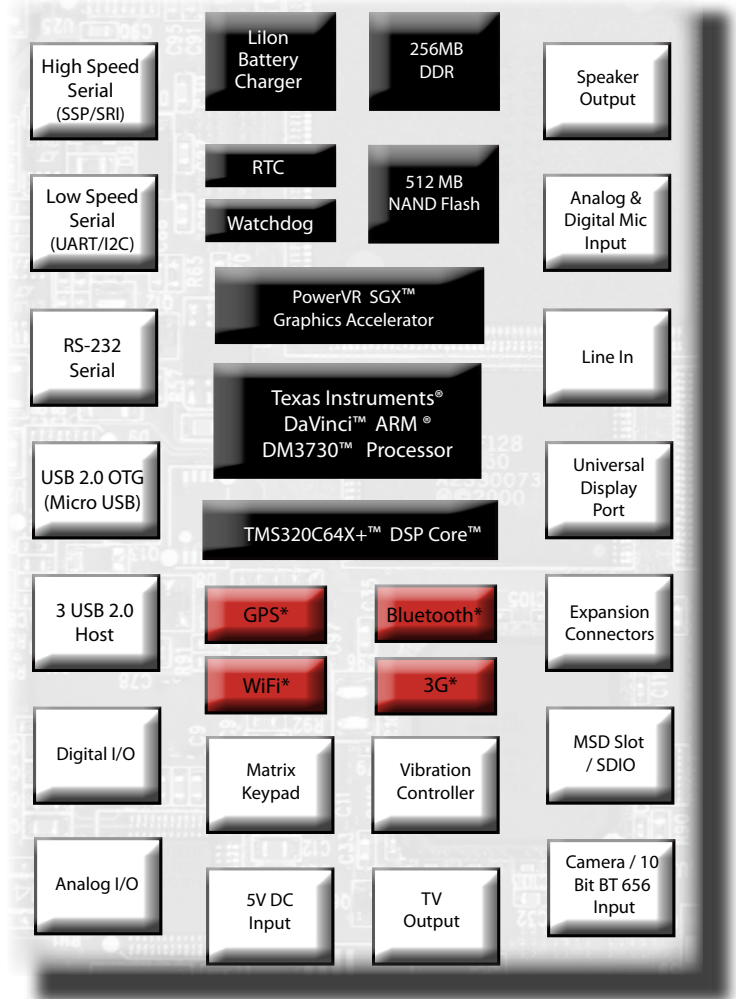
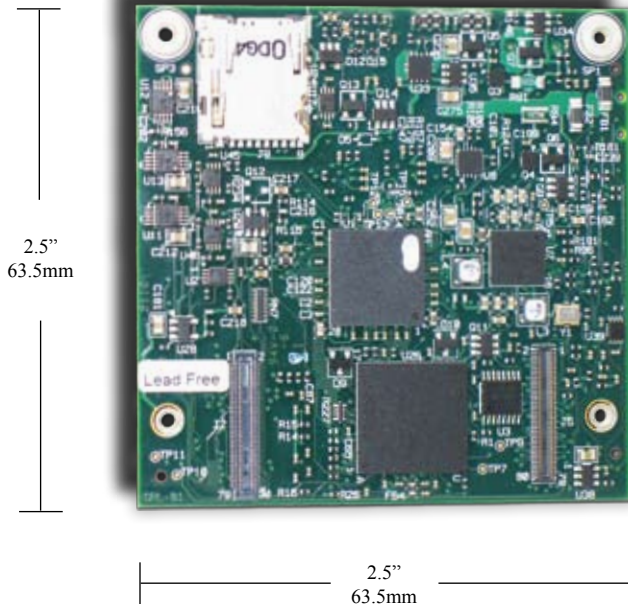


InHand Fury™: Compact Embedded System Based on Texas Instruments DaVinci™ DM3730 Processor

Based on the Texas Instruments DaVinci™ DM3730 processor, InHand's Fury™, part of the new Apeiron line, offers top-of-the-line performance to OEM developers of wireless and handheld devices. InHand's smallest standard products to date, the new line continues InHand's focus on small-size and low-power, while increasing performance speed and functionality without sacrificing size, quality or power. Fury's dual-core capabilities offers a wide range of on-board peripherals including: Micro USB, RS-232 serial port, 3 USB 2.0 Host, Lilon battery charger, 256MB DDR, 512MB NAND Flash, RTC, Watchdog, Universal Display Port, microSD slot/SDIO, and the option for GPS, Bluetooth, WiFi and 3G broadband. For 3-D multimedia acceleration, Fury includes a PowerVR SGX™ graphics accelerator and TI DSP for video and audio CODEC acceleration. Fury also includes expansion connectors for easy system expansion with InHand's off-the-shelf daughter card, Muse, or custom developed application specific expansion board.



*optional



Every InHand product is equipped with InHand's patented BatterySmart® technology. In addition to low-power design and component selection, BatterySmart extends the life of portable and mobile devices through intelligent use of the processor's Dynamic Voltage and Frequency Scaling (DVFS). All aspects of Fury's hardware and software work together to find the perfect balance between performance and battery life.

InHand Fury™ Specifications

CPU	Texas Instruments® DaVinci™ DM3730 dual-core processor, 1GHz ARM Cortex-A8 and 800MHz TMS320C64X+™ DSP processing power
Flash Memory	512MB NAND Flash
DDR	256MB DDR2
Plug-In Peripherals	μSD Slot / SDIO
Off-Board Peripherals	3 Port USB 2.0 Hub, 12V power input, Dual Cell Battery Charger
Serial Ports	1 RS-232 Serial Port on board, high speed SSP/SRI, low speed UART/I2C; RS-232 and RS-485 Serial Ports and UART (via expansion board)
USB	2 USB 2.0 Host ports, USB OTG (Micro USB); 2 USB 2.0 Host ports (via expansion board)
Wireless Peripherals	802.11 b/g WiFi, Bluetooth 2.0, 50 channel GPS and 3G (Q3 '11) modules option
Wired Peripherals	10/100 802.3 Ethernet with RJ-45 connector (via expansion board)
I/O Pins	Digital and Analog I/O pins
Audio	Stereo speaker output, headphone output, 1 analog and 1 digital microphone input, stereo line output, stereo line input
Video	Camera interface, NTSC output, NTSC input, component/RGB input (on expansion board)
Display Support	Up to SXGA+ (1400x1050) full-color, including touch screen and backlight
Multi-Media	PowerVR SGX™ graphics accelerator, H.264 720p30 encode/decode via DSP
RTC	Battery-backed real-time clock on board, with alarm wake-up functionality
Battery Support	LiIon Battery charger with single cell on board dual cell option (on expansion board)
Operating Systems	Windows® Embedded Compact 6.0, Linux, Android 2.2
Dimensions	63.5mm x 63.5 mm
Thickness	8.7mm
Power Consumption	1 - 1.25 Watt

Ordering Information

Part Number	Description
FUR-9SBC-01	Fury Standard Single Board Computer
FUR-DP-01	Fury Standard Development Platform

Call or email for pricing and availability. Refer to part numbers above.

Contact Information

sales@inhand.com
info@inhand.com

v: 240.558.2014

InHand Electronics, Inc.
30 W Gude Dr., Suite 550
Rockville, MD 20850

www.inhand.com

InHand Electronics, Inc. is a leading provider of low-power embedded systems to Original Equipment Manufacturers. Every InHand system includes BatterySmart, InHand's patented run-time power management suite for battery-operated handheld and wireless devices, such as UMPCs, PDAs, wearable computers, industrial computers and smart sensors. The company's products are used in a variety of industries, including military, healthcare, entertainment, and instrumentation. InHand's FireFly, Apeiron, Fingertip and BatterySmart products are built on industry-leading technologies, such as Intel's Atom and Texas Instruments DaVinci and Sitara and Marvell PXA processors, and Linux, Android, and Microsoft's Windows CE, Mobile and Windows Embedded operating systems. InHand is an ITAR registered company and its products are made in the USA. The company's headquarters are located along the I-270 Technology Corridor in Rockville, Maryland. For more information, visit www.inhand.com.

