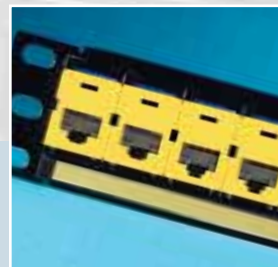


Copper Patch Panels

Ortronics/Legrand continues its leadership in patch panel design with the first ETL independently verified patch panel to meet the Category 6 component specification. Equally important, Ortronics panels excel in performance while supporting ease of use and preferred installation practices. So, whether it is 10 Gig, PoE, Category 6 or voice, 110 termination or 50-pin, high density, standard density, angled or hinged, Ortronics/Legrand has a quality panel to serve your application.

- Clarity⁶ & Clarity^{5E} Patch Panels19**
- Angled Clarity[®] Patch Panels20**
- Hinged Clarity Patch Panels20**
- Category 5e Patch Panels21**
- Additional Patch Panels21, 22**
- Clarity PoE Patch Panels23**
- Clarity^{10G} Patch Panel23**
- Patch Panel Kits24**
- Shielded Patch Panels24**

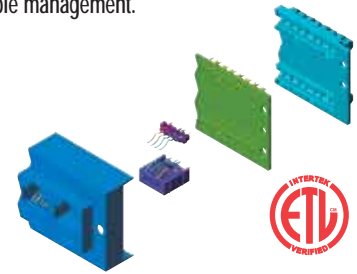


Clarity® Patch Panels



Clarity Patch Panels combine the Ortronics/Legrand commitment to ease and reliability with the ETL verified TIA-568-B Category 6 or enhanced Category 5e performance of center tuned connector technology. These 110 termination 19" panels are available in six port module groupings, in 12, 24, 48, and 96 port sizes. Panels provide extensive designation abilities, icon compatibility and rear cable management.

- ETL verified to TIA component specifications ensures component performance
- Center tuned to Clarity patch cords—more transparent mated union
- Universal wired 110 termination supports T568A and B installations
- New IDC housing handles both larger Category 6 and Category 5e conductors
- Supplied rear cable management supports good cabling practices
- High density design maximizes rack utilization



Clarity⁶ and Clarity^{5E} Modular to 110 Patch Panels



OR-PHD66U24



OR-PHD5E6U24 back



OR-PSD66U24



OR-PHD68U24



OR-PHD5E8U24 back

Clarity High Density with Six Port Modules

CLARITY ⁶ CATEGORY 6 PART NO.	CLARITY ^{5E} ENHANCED CATEGORY 5E PART NO.	NO. OF PORTS	T568 WIRING	HEIGHT	RACK UNITS
OR-PHD66U24	OR-PHD5E6U24	24	Universal A/B	1.75"	1
OR-PHD66U48	OR-PHD5E6U48	48	Universal A/B	3.5"	2
OR-PHD66U96	OR-PHD5E6U96	96	Universal A/B	7"	4

Clarity Standard Density with Six Port Modules

CLARITY ⁶ CATEGORY 6 PART NO.	CLARITY ^{5E} ENHANCED CATEGORY 5E PART NO.	NO. OF PORTS	T568 WIRING	HEIGHT	RACK UNITS
OR-PSD66U12	OR-PSD5E6U12	12	Universal A/B	1.75"	1
OR-PSD66U24	OR-PSD5E6U24	24	Universal A/B	3.5"	2
OR-PSD66U48	OR-PSD5E6U48	48	Universal A/B	5.25"	3
OR-PSD66U96	OR-PSD5E6U96	96	Universal A/B	10.5"	6

Clarity High Density with Eight Port Modules

CLARITY ⁶ CATEGORY 6 PART NO.	CLARITY ^{5E} ENHANCED CATEGORY 5E PART NO.	NO. OF PORTS	T568 WIRING	HEIGHT	RACK UNITS
OR-PHD68U24	OR-PHD5E8U24	24	Universal A/B	1.75"	1
OR-PHD68U48	OR-PHD5E8U48	48	Universal A/B	3.5"	2
OR-PHD68U96	OR-PHD5E8U96	96	Universal A/B	7"	4

Clarity⁶ and Clarity^{5E} Modular to 110 Mini Patch Panels



OR-PMP612H

OR-PMP61289

CLARITY ⁶ CATEGORY 6 PART NO.	CLARITY ^{5E} CATEGORY 5E PART NO.	NO. OF PORTS	T568 WIRING	MOUNTING
OR-PMP612H	OR-PMP5E12H	12	Universal A/B	Hinged
OR-PMP61289	OR-PMP5E1289	12	Universal A/B	89D



Angled Clarity® Patch Panels



Angled Clarity panels utilize a unique recessed angle design to help direct cords with greater ease to vertical rack or cabinet management within a lower profile. This design provides an improved alternative for applications that don't offer rack space for horizontal management. Rugged rear cable management is supplied to support best cabling practices.

- Lower mounted profile directs cords more easily to vertical management
- Deeper rear cable support bar addresses larger Category 6 cable designs
- ETL verified category performance
- Compatibility with standard 110 tool termination practices
- Time saving termination with easy lace multi-port adapters
- Rugged construction
- Label fields and icon compatibility
- Work especially well with the increased depth and enhancements of Mighty Mo® 6 cable management racks



Angled Clarity⁶ and Clarity^{5E} Modular to 110 Patch Panels



OR-PHA66U48 front



OR-PHA66U48 back

Angled Clarity with Six Port Modules

CLARITY ⁶ CATEGORY 6 PART NO.	CLARITY ^{5E} ENHANCED CATEGORY 5E PART NO.	NO. OF PORTS	T568 WIRING	HEIGHT	RACK UNITS
OR-PHA66U24	OR-PHA5E6U24	24	Universal A/B	1.75"	1
OR-PHA66U48	OR-PHA5E6U48	48	Universal A/B	3.5"	2

Hinged Clarity Patch Panels

Clarity⁶ and Clarity^{5E} Patch Panels with Hinged Cable Management

Hinged Clarity panels include cable management panels to assist in applications with limited rear access. Panels can be terminated in the hinged-down position while resting on management rings. Panels can also be mounted back-to-back on our 16.5" deep Mighty Mo racks.



OR-PHD66U24HM

Clarity High Density with Six Port Modules

CLARITY ⁶ CATEGORY 6 PART NO.	CLARITY ^{5E} ENHANCED CATEGORY 5E PART NO.	NO. OF PORTS	T568 WIRING	HEIGHT	RACK UNITS
OR-PHD66U24HM	OR-PHD5E6U24HM	24	Universal A/B	3.5"	2
OR-PHD66U48HM	OR-PHD5E6U48HM	48	Universal A/B	7"	4



OR-PHD5E6U48HM

Clarity Standard Density with Six Port Modules

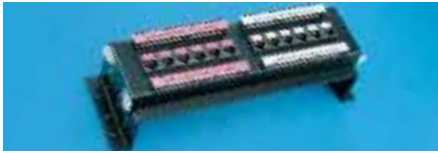
CLARITY ⁶ CATEGORY 6 PART NO.	CLARITY ^{5E} ENHANCED CATEGORY 5E PART NO.	NO. OF PORTS	T568 WIRING	HEIGHT	RACK UNITS
OR-PSD66U24HM	OR-PSD5E6U24HM	24	Universal A/B	7"	4
OR-PSD66U48HM	OR-PSD5E6U48HM	48	Universal A/B	8.75"	5

Note: 24 port high density panels have 1.75" cable management panels with 1.7" x 3.5" rings. All other hinged panels have 3.5" cable management panels with 3" x 4" rings.



Category 5e Front-Terminated Patch Panels

Category 5e Cross Connect Jack Panel Blocks with Front 110-Termination



OR-851044559

12 Port Front Termination Blocks

PART NO.	NO. OF PORTS	JACK WIRING	HEIGHT	WIDTH
OR-851044559	12	T568B	3.56"	10.69"
OR-851044560	12	T568A	3.56"	10.69"



Shown with optional cable management troughs

36 Port Front Termination Blocks

PART NO.	NO. OF PORTS	JACK WIRING	HEIGHT	WIDTH
OR-851044561	36	T568B	10.69"	10.69"
OR-851044562	36	T568A	10.69"	10.69"

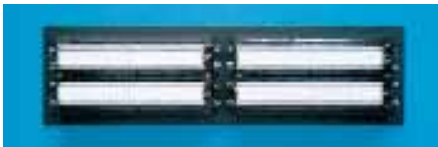


Patch Panels

Modular Quadframe 19" 110 Patch Panels



OR-809004910 front



OR-809004910 back

Ortronics Modular Quadframe 19" Patch Panels provide 110-termination wired to two-, four-, six-, or eight-contact jacks. These panels are commonly used to support voice, alarm, and low speed data applications. Available jack wiring: RJ11, RJ14, RJ25 or T568B.

PART NO.	NO. OF PORTS	JACK WIRING	HEIGHT	RACK UNITS
OR-809004901	24	6-position RJ11, pins 3 and 4	3.5"	2
OR-809004902	24	6-position RJ14, pins 2-5	3.5"	2
OR-809004903	24	6-position RJ25, pins 1-6	3.5"	2
OR-809004904	24	8-position T568B, pins 1-8	3.5"	2
OR-809004909	48	6-position RJ11, pins 3 and 4	5.25"	3
OR-809004910	48	6-position RJ14, pins 2-5	5.25"	3
OR-809004911	48	6-position RJ25, pins 1-6	5.25"	3
OR-809004912	48	8-position T568B, pins 1-8	5.25"	3

10/100 Base-T Fast Ethernet Patch Panels



OR-838045326 front



OR-838045326 back

Ortronics 10/100Base-T Panels provide a 50-pin connector interface between 25-pair cables and Fast Ethernet hubs. Twelve jacks are wired via a printed circuit board from each industry standard RJ21 50-pin female connector. Panels provide front and rear label fields. Use with 845 cable assemblies.

PART NO.	NO. OF PORTS	WIRING	HEIGHT	RACK UNITS
OR-838045326	48	8-position 1, 2, 3, 6	3.5"	2

Patch Panels

Category 5e Telco Panel



OR-PHD5E2124

Ortronics Category 5e 25-pair panels provide a 50-pin connector interface (standard RJ21 wiring) between Category 5e 25-pair cable Gigabit Ethernet hubs requiring full 4-pair cabling. Panels provide front and rear label fields. Use with 845E cable assemblies.

PART NO.	NO. OF PORTS	WIRING	HEIGHT	RACK UNITS
OR-PHD5E2124	24	T568B	1.75"	1
OR-PHD5E2148	48	T568B	3.5"	2

Modular Quadframe 19" Telco Patch Panels



OR-808004920

Ortronics Modular Quadframe 19" Telco Panels provide RJ21 50-pin connectors wired to two-, four-, six-, or eight-contact jacks. These panels are commonly used to support voice, alarm, and low speed data applications. Available jack wiring: RJ11, RJ14, RJ25, 8-position.



PART NO./ MALE TELCO	PART NO./ FEMALE TELCO	NO. OF PORTS	50-PIN TELCO QUANTITY	JACK WIRING	HEIGHT	RACK UNITS
OR-808004920	OR-808004921	24	1	6-position RJ11, pins 3 and 4	3.5"	2
OR-808004940	OR-808004941	48	2	6-position RJ11, pins 3 and 4	5.25"	3
OR-808004942	OR-808004943	48	4	6-position RJ14, pins 2-5	5.25"	3
OR-808044253	OR-808004723	48	2	8-position, pins 4 and 5	5.25"	3

19" Wide High Density Modular Telco Patch Panels



OR-808004345

Ortronics 19" wide High Density Modular Telco Panels provide RJ21 50-pin connectors wired to two-, four-, six-, or eight-contact 8-position jacks. These panels are commonly used to support voice, alarm, and low speed data applications.

PART NO./ MALE TELCO	PART NO./ FEMALE TELCO	NO. OF PORTS	50-PIN TELCO QUANTITY	MODULAR JACK WIRING	HEIGHT	RACK UNITS
OR-808004388	OR-808004389	24	1	8-position, pins 4 and 5	1.75"	1
OR-808004331	OR-808004337	24	2	8-position, pins 3-6	1.75"	1
OR-808004333	OR-808004339	24	4	8-position, pins 1-8*	1.75"	1
OR-808004042	OR-808004041	48	2	8-position, pins 4 and 5	3.5"	2
OR-808004343	OR-808004349	48	4	8-position, pins 3-6	3.5"	2
OR-808004345	OR-808004351	48	8	8-position, pins 1-8*	3.5"	2
OR-808004356	OR-808004373	96	4	8-position, pins 4 and 5	7"	4

Note: *T568B wired 8-position jacks

new Clarity® PoE Patch Panel

Perfect for VoIP, wireless access points like the Ortronics Wi-Jack™, security cameras and more, Ortronics Clarity PoE Patch Panel eliminates the need for a separate power supply and is the most cost effective way to deploy power where it is not easily accessible. It is available as a single unit or can be purchased in stages to delay the cost of the power until you're ready. And, the panel is designed to allow easy access to cable terminations even when active.



- Compliant with IEEE 802.3af power specifications
- LED indicators on front of panel easily identify the real time powering status of each port
- Serial port provides installer detailed information and control of each port
- Order as a single unit that includes 16 port panel, PoE controller and power supply or as separate components for a staged deployment
- Clarity PoE panels only occupy 1 rack space
- 260 watt power supply supports IEEE 802.3af maximum of 15.4 watts per channel measured at the IDC
- Utilizes standard 110 termination
- Meets TIA/EIA-568-B.2 Category 5e component specifications
- Center tuned Clarity technology for elevated performance
- More transparent signal path when used with Clarity cords
- Supplied label fields and icon compatible

PART NUMBER	DESCRIPTION	RACK UNITS	MOD/110 WIRING
OR-PP5ECMS16	Clarity ^{5E} 16 port PoE powered panel, 260 watt, 1.75" x 19" x 10.5"	1	T568A/B
OR-PP5EUPF16	Clarity ^{5E} 16 port PoE panel, without power or controller, 1.75" x 19"	1	T568A/B
OR-PPS2601U	Power supply, 260 watt, with output cable, for use with OR-PP5EUPF16		
OR-CMS161U	Control module for 16 port PoE, for use with OR-PP5EUPF16		

new Clarity^{10G} TracJack® Patch Panel



Ortronics Clarity^{10G} individual jack panel holds 24 Clarity^{10G} TracJacks to provide a horizontal cross connect solution for 10 Gigabit Ethernet networks. When loaded with Clarity^{10G} TracJacks, this panel complements the tactical isolation techniques of the jacks to significantly reduce alien crosstalk. Clarity^{10G} TracJacks are ordered separately.

PART NO.	DESCRIPTION	SIZE	RACK UNITS
OR-PHDTJA24	24-port TracJack® panel with tactical isolation for 10G	1.75" x 19"	1

Patch Panel Kits

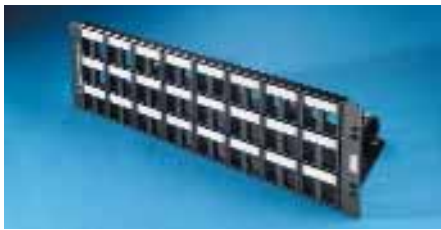
Ortronics 19" wide Panel Kits provide the ability to field configure your own patch panels. Kits are available to support front-loading TracJack® or Series II® modules, providing panel options to support a wide range of applications. TracJacks are ordered separately.



OR-PHDTJU24



OR-40104552



OR-401045292



OR-401045284

High Density TracJack Patch Panel Kits (TracJacks not included, see pg. 7)

PART NO.	NO. OF TRACJACKS	DESCRIPTION	HEIGHT	DEPTH	RACK UNITS
OR-PHDTJU24	24	Panel kit for TracJacks	1.75"	.95"	1

Extra Density TracJack Patch Panel Kits (TracJacks not included, see pg. 7)

PART NO.	NO. OF TRACJACKS	DESCRIPTION	HEIGHT	DEPTH	RACK UNITS
OR-401045548	30	Panel kit with shelf	1.75"	5.5"	1
OR-401045552	30	Panel kit without shelf	1.75"		1

Standard Density TracJack Patch Panel Kits (TracJacks not included, see pg. 7)

PART NO.	NO. OF TRACJACKS	DESCRIPTION	HEIGHT	DEPTH	RACK UNITS
OR-401045289	16	Panel kit with shelf	1.75"	4"	1
OR-401045290	24	Panel kit with shelf	3.5"	5"	2
OR-401045291	32	Panel kit with shelf	3.5"	5"	2
OR-401045292	48	Panel kit with shelf	5.25"	6"	3

Standard Density Series II Patch Panel Kits (Series II modules not included, see pg. 12, 13)

PART NO.	NO. OF 1U SERIES II MODULES	DESCRIPTION	HEIGHT	DEPTH	RACK UNITS
OR-401045283	8	Panel kit with shelf	1.75"	4"	1
OR-401045284	12	Panel kit with shelf	3.5"	5"	2
OR-401045285	16	Panel kit with shelf	3.5"	5"	2
OR-401045286	24	Panel kit with shelf	5.25"	6"	3

Shielded Patch Panels

Shielded TracJack Patch Panel Kit



OR-PHDTJS24 back



Ortronics new 19" Panel Kits for shielded TracJacks provides a high density cross connect for 100 Ohm shielded cabling systems. Kits provide a rugged design to support front loading of shielded TracJack modules combined with low impedance grounding methods and rear cable management. Shielded Clarity⁶ and Clarity^{5E} TracJacks are ordered separately.

Shielded TracJack Patch Panel Kits (TracJacks not included, see pg. 7)

PART NO.	NO. OF TRACJACKS	DESCRIPTION	HEIGHT	DEPTH	RACK UNITS
OR-PHDTJS24	24	Panel kit for shielded Clarity TracJacks	1.75"	4.13"	1

Category 5e Shielded Modular to 110 Patch Panels



Shielded Category 5e Modular to 110 Patch Panels are fully encased to protect connections from EMI and RFI and have a removable cover for easy access to terminations.

PART NO.	NO. OF PORTS	T568 WIRING	HEIGHT	RACK UNITS
OR-867045187	24	Universal A/B	1.75"	1

Note: For fiber patching solutions, see pages 69-72.

