

FWA-3680

Rackmount Internet Security Platform with 4 Front LAN Ports and Dual PCI Expansion Slots



NEW

Features

- 1U rackmount security appliance platform
- Socket 370 Intel®Pentium®III/Celeron®up to 1.26 GHz
- Dual 32-bit/33 MHz PCI expansion slots
- Four 10/100 Fast Ethernet ports
- Console port for local setting
- Hard drive mounting bracket for 3.5" drive

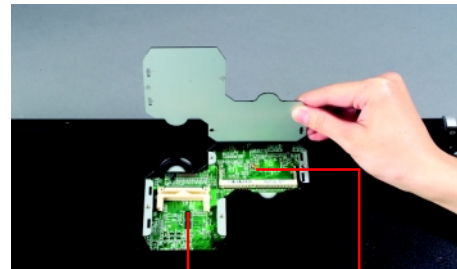
Introduction

Conceived as a powerful rackmount Internet security platform, the FWA-3680 is specifically designed for Internet secure connectivity. Designed with the Intel Pentium III/Celeron processor, it provides high performance and meets the requirements of Internet security appliances. The system supports CompactFlash for use in installing OS and Internet security applications. This avoids service disruption caused by hard disk mechanical/magnetic failures. In addition, the FWA-3680 can support system memory up to 512 MB SDRAM. Both CompactFlash and SDRAM can be accessed and

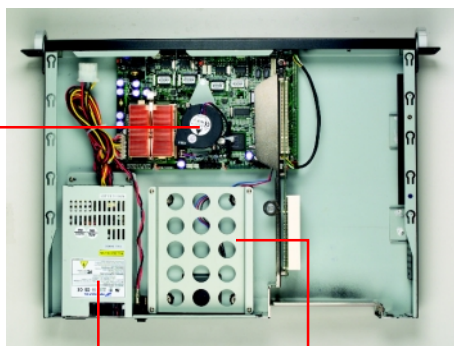
replaced for software upgrades through an easily removable cover. Designed with the Plug-and-Serve concept in mind, the FWA-3680 offers four 10/100 Mbps auto-sensing Fast Ethernet ports in the front panel. There are two LED Indicators which monitor Power and HDD activities. For easy access, the front panel has a 9-pin, RS-232 serial port for local system management, maintenance and diagnostics. The FWA-3680 has a place reserved for an optional 3.5" IDE HDD and dual PCI expansion slots. It is FCC and CE compliant.



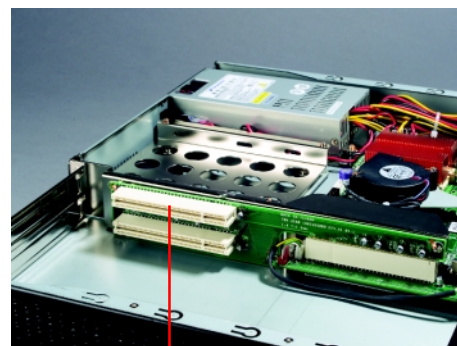
RS-232 console port Four LAN ports



CompactFlash socket SDRAM socket



Blower Power supply 3.5" IDE HDD space



Dual 32-bit/33 MHz PCI expansion slots

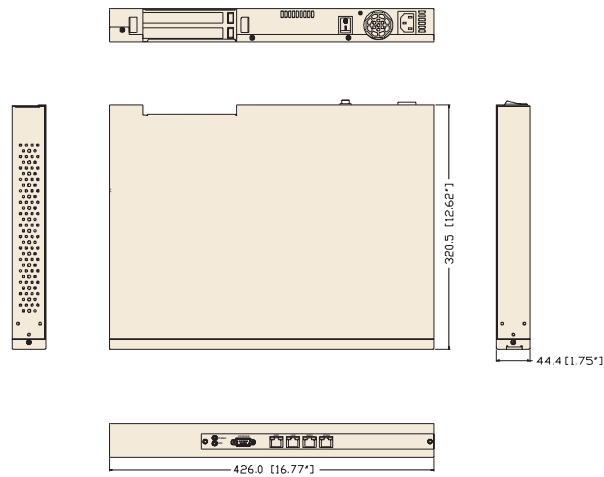
CE FCC

ADVANTECH

• All brand names and registered trademarks are the property of their respective owner
• All specifications are subject to change without notice

Date of Publication: 2003-07-14

Dimension Diagram



Unit: mm (inch)

Specifications

Processor System	CPU	Intel Pentium III	Intel Celeron
	Max. Speed	1.26 GHz	1.2 GHz
	L2 Cache	512/256 KB	256/128 KB
	Chipset	Intel 815E	
	BIOS	Award 4 Mb Flash	
Bus	PCI	32-bit/33 MHz	
	PCI Expansion	32-bit/33 MHz x2	
Memory	Technology	PC-133 SDRAM	
	Max. Capacity	512 MB	
	Socket	144-pin SO-DIMM	
Ethernet	Interface	10/100Base-TX	
	Controller	Intel 82559ER x3, ICH2 x1	
	Connector	RJ-45 x4	
Drive Bay	3.5" HDD	1 (optional)	
Cooling	Blower	1 (3 CFM), 1 (4 CFM)	
Management	Console	RS-232 x1	
Miscellaneous	Control	Power switch	
	Indicators	2 LED indicators for Power/HDD	
	CompactFlash Socket	1	
Power Requirement	Input	AT PS, AC 90 ~ 264 V @ 47 ~ 63 Hz, full range	
	Output	180 W	
Environment	Temperature	Operating 0 ~ 40 °C (32 ~ 104 °F)	Non-Operating -20 ~ 75 °C (-4 ~ 167 °F)
	Humidity	5 ~ 85 % @ 40 °C (104 °F)	5 ~ 95 %
	Dimensions (W x H x D)	426 x 44.4 x 320.5 mm (16.8" x 1.75" x 12.6")	
Physical	Weight	4.5 Kg (9.9 lb)	

Ordering Information

Part Number	Processor	LAN	Power Supply	PCI Slot	CompactFlash	SDRAM	HDD Drive
FWA-3680	--	4	180 W	2	--	--	--

Packing List

Part Number	Descriptions
170144030A	IDE flat cable 40P
1701100306	Console cable
1961600000	CPU cooler

Accessory Options (for system developers)

Part Number	Descriptions
1703080101	Power cable wire 7P/Big 4P*2 10 cm
1703100260	USB cable
1700260250	Paralle cable: ASS'Y LPT port 25 cm 25P to 26P 2.0 mm
1700100250	Secondary cable: ASS'Y COM port 25 cm D-SUB 9P to 10P 2.0 mm
1700060200	Keyboard/PS2 mouse cable: 6P 20 cm 5P circular DIN & 6P circular DIN
1701160101	VGA cable: ASS'Y VGA 10 cm D-SUB 15P to 16P 2.0 mm
1701440350	Flat cable 44P 35 cm Gray IDC44P/IDC44P/IDC44P
1701440500	Flat cable 40P 50 cm Gray IDC40P/IDC40P/HOUSING44P
1700081401	Cable Ethernet cross over 8P to 8P 140 cm

CompactPCI Enclosures **1**

CompactPCI Boards **2**

CompactPCI Peripherals **3**

Blade Servers **4**

Network Appliances **5**

e-Server Systems **6**

Storage Subsystems **7**

Industrial Computer Chassis **8**

Full-sized CPU Cards **9**

Passive Backplanes **10**

Industrial Computer Peripherals **11**