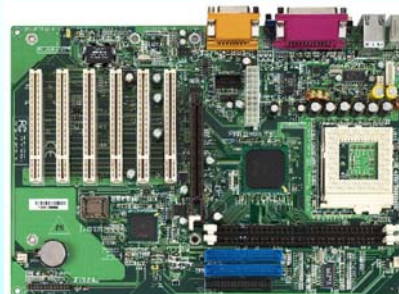


# IP-3ETI33

## Socket 370 ATX Board for Pentium® !!! / Celeron™ / VIA® C3 Processor with VGA / LAN / Audio

### Key-point:

- > Socket 370 for Intel® Pentium® !!! / Celeron™ / VIA® C3 processor, up to 1.4GHz
- > Intel® 815E chipsets, 100 / 133 MHz FSB
- > Chipset integrated VGA function
- > Support 10 / 100 Base-TX Ethernet
- > AC97 Audio Codec, 4 x USB 1.1 ports, 2 x COM ports
- > 1 x AGP / 6 x PCI slots
- > WatchDog timer & Hardware monitoring function



### Specifications:

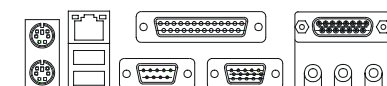
- ⊙ **Processor:**
  - \* Support socket 370 Intel® Pentium® !!! / Celeron™ / VIA® C3 processor
  - \* Up to 1.4GHz
- ⊙ **Core Logic:**
  - \* Intel® 815E + ICH2 chipsets
- ⊙ **BIOS:**
  - \* Award BIOS
- ⊙ **Front Side Bus Speed:**
  - \* 100 / 133 MHz
- ⊙ **Memory:**
  - \* Two 168-pins DIMM, support 512MB SDRAM (max.)
- ⊙ **Onboard VGA Controller:**
  - \* Intel® 815E chipset integrated VGA function
  - \* 15-pins D-Sub VGA connector
- ⊙ **LAN Controller:**
  - \* Intel® 82562ET LAN controller, for 10 / 100 Base-TX Ethernet
- ⊙ **Onboard IDE:**
  - \* Two EIDE channels for PIO mode, DMA mode
  - \* Support four ATA-100 / 66 / 33 IDE devices
- ⊙ **Multi I/O:**
  - Onboard Winbond® W83627HF chip, support:
    - \* 1 x IrDA by 5-pins pin-header
    - \* 1 x Floppy port by pin-header
    - \* 1 x SPP / EPP / ECP parallel port
    - \* 2 x COM ports for RS-232
- ⊙ **Keyboard / Mouse Connector:**
  - \* Staked connector for PS/2 type keyboard / mouse
  - \* 1 x 6-pins connector for external keyboard / mouse
- ⊙ **Audio:**
  - \* AC97 Audio Codec
- ⊙ **USB:**
  - \* Support 4 x USB 1.1 ports, two USB ports on rear panel
  - \* 2 x USB ports by pin-header, optional USB cable with bracket
- ⊙ **WatchDog Timer:**
  - \* 256 Levels software programmable
- ⊙ **Hardware Monitoring:**
  - \* Winbond® W83627HF chip, monitoring for CPU and system temperature, voltage and fan speed
- ⊙ **Extension slot:**
  - \* 1 x AGP4X slot
  - \* 6 x PCI slots
- ⊙ **Environments:**
  - \* Operation temperature: 0°C to 60°C (32° F to 140° F)
  - \* Storage temperature: -20°C to 80°C (-68° F to 176° F)
  - \* Relative humidity: 10% to 90% (Non-Condensing)
- ⊙ **Certification:**
  - \* CE, FCC pre-scan approval
- ⊙ **Form Factor:**
  - \* ATX form factor 12" x 8.3" (305mm x 210mm)

\*Specification is subject to change without prior notice

### Ordering Information:

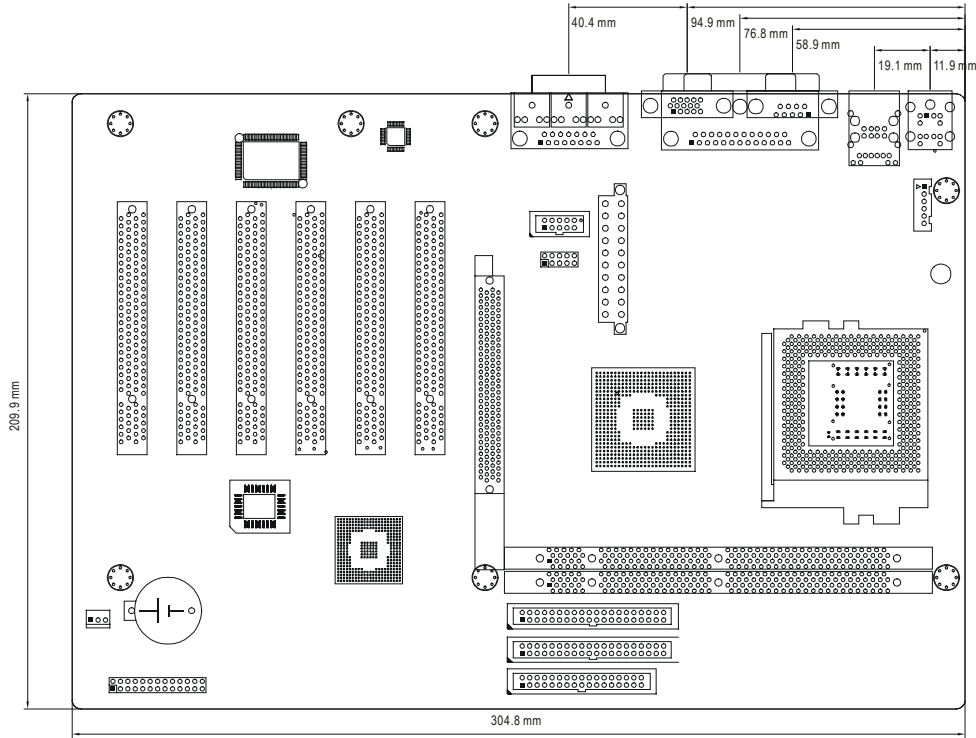
Model No.	Position	Support LCD	Support VGA	Support LAN	Support Audio	Support AGP/PCI /ISA
M815A	Standard Product	---	---	---	Yes	1 / 2 / 4
IP-3ETI23	Standard Product	---	Yes	Yes	Yes	1 / 4 / 3
IP-3ETI33	Standard Product	---	Yes	Yes	Yes	1 / 6 / 0

### I/O Shield Layout



# IP-3ETI33

**Mechanical Drawing:**



**Block Diagram:**

