

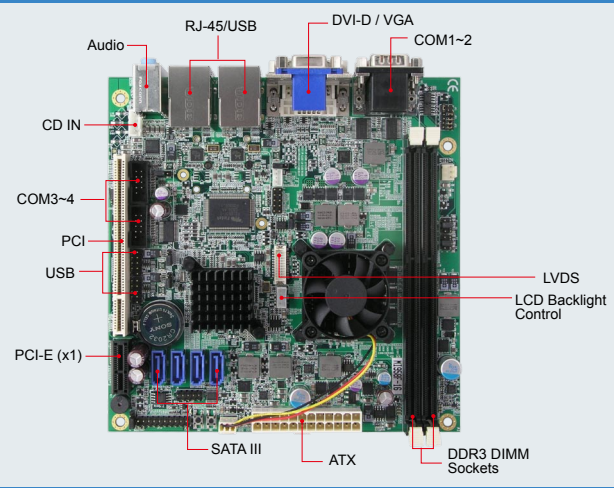
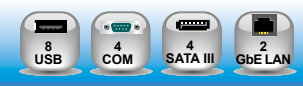


Motherboards

AMD G-Series-Based

AMD G-Series APU Mini-ITX Motherboard w/ AMD A55E chipset

MI958 NEW



Features

- Supports AMD G-Series T56N / T48N / T40N processors, up to 1.6GHz
- 2x DDRIII DIMM, Max. 8GB
- 2x PCI-E Gigabit LAN
- Supports dual display
- Watchdog timer, HD Audio
- 4x SATA III, 8x USB 2.0, 4x COM
- 1x PCI, 1x PCI-E(x1), 1x Mini PCI-E(x1)

System

CPU	AMD G-series Dual-Core APU onboard, up to 1.65GHz
System Memory	DDR3 DIMM x 2, Max. 8GB
System Chipset	AMD A55E FCH
BIOS	AMI
Watchdog Timer	256 levels
SSD	N/A
H/W Monitor	Yes
Expansion Slots	1x PCI, 1x PCI-E(x1), 1x Mini PCI-E(x1)

Mechanical and Environmental

Dimensions	170mm x 170mm (6.7" x 6.7")
Max. Power Requirement	TBC
Operating Temperature	0°C~60°C (32°F~140°F)
Storage Temperature	-20°C~80°C (-4°F~176°F)
Relative Humidity	10%~90% (non-condensing)

Graphics

VGA Controller	AMD G-Series APU built-in Radeon™ HD6320 (G-T56N) / Radeon™ HD6310 (G-T48N) / Radeon™ HD6290 (G-T40N)
VGA Memory	Shared memory Max. 256MB
Display Interface	Onboard CRT, DVI-D & 18-bit single channel LVDS

Ethernet

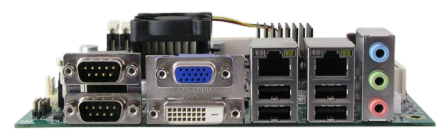
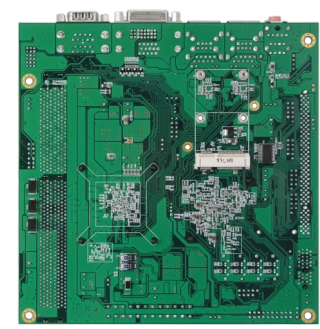
Controller	2x Realtek 8111E Gigabit LAN
Connector	Dual RJ-45 on board

Multi I/O

Chipset	Fintek F81865-I 3x RS232, 1x RS232/422/485, 4 x SATA III
USB	4 ports onboard Pin header for 4 ports (USB 2.0)
Audio	Built-in HD audio + AC97 codec (ALC269) for 2.1 CH
Others	Digital I/O (4-in/4-out)

Ordering Information

MI958F-16	AMD G-T56N (1.65GHz) + A55E Mini-ITX motherboard with VGA, DVI, LVDS and Dual Gigabit LAN
MI958F-14 (by request w/ MOQ)	AMD G-T48N (1.4GHz) + A55E Mini-ITX motherboard with VGA, DVI, LVDS and Dual Gigabit LAN
MI958F-10 (by request w/ MOQ)	AMD G-T40N (1.0GHz) + A55E Mini-ITX motherboard with VGA, DVI, LVDS and Dual Gigabit LAN



Remarks:
 1. For optional daughter boards and riser cards, please refer to page 19-20.
 2. Specifications are subject to change without prior notice.

- 1 Motherboards
- 2 Disk-Size SBcs
- 3 CPU Modules
- 4 PC/I/O Plus
- 5 CPU Card
- 6 Embedded Systems
- 7 Network Security Appliance