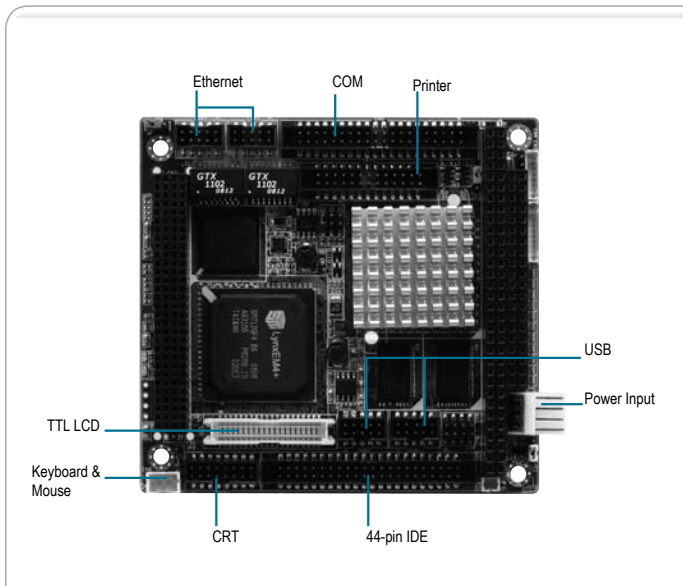


■ PC/104 CPU Module With DM&P® Vortex86SX® SoC Processor



Features

- Onboard DM&P® Vortex86SX® SoC Processor
- DM&P® Vortex86SX® SoC
- Onboard DDRII Memory 256 MB
- 10/100Base-TX Ethernet x 2
- CRT & Up To 24-bit TTL LCD
- EIDE x 1, CompactFlash™ x 1
- USB2.0 x 4, COM x 4
- PC/104+ Expansion
- +5V Only Operation, AT Power Type



Specifications

System	
Form Factor	PC/104
Processor	Onboard DM&P® Vortex86SX® SoC (300 MHz) Processor
System Memory	Onboard DDRII Memory – 256 MB
Chipset	DM&P® Vortex86SX® SoC
I/O Chipset	DM&P® Vortex86SX® SoC
Ethernet	Intel® 82551ER, 10/100Base-TX, RJ-45 x 2
BIOS	AMI - 256 KB ROM
Watchdog Timer	Generates a time-out system reset
H/W Status Monitoring	Supports power supply voltages and temperature monitoring
Expansion Interface	PC/104+
Battery	Lithium battery
Power Requirement	+5V/ AT
Power Consumption (Typical)	Vortex86SX® 256 MB 1.82A@+5V
Board Size	3.55" (L) x 3.77" (W) (90mm x 96mm)
Gross Weight	0.33 lb (0.15 Kg)
Operating Temperature	32°F ~ 140°F (0°C ~ 60°C)
Storage Temperature	-40°F ~ 176°F (-40°C ~ 80°C)
Operating Humidity	0% ~ 90% relative humidity, non-condensing
MTBF (Hours)	129,000
Display	Supports CRT/LCD simultaneous/ dual view display
Chipset	SMI712GF4
Resolution	Up to 1280x 1024 @ 85Hz colors for CRT Up to 1024 x 768 @ 24bpp colors for LCD
LCD Interface	Up to 24-bit TTL
I/O	
Storage	EIDE x 1 (UDMA-100 for two devices), CompactFlash™ x 1
Serial Port	RS-232 x 3, RS-232/422/485 x 1
USB	USB2.0 x 4
PS/2 Port	Keyboard+Mouse x 1

Packing List

- Cable Kit
- Quick Installation Guide
- Utility CD
- PFM-535S w/Heatsink

Ordering Information

• TF-PFM-535S-A10

PC/104 Board, DM&P® Vortex86SX® 300 MHz, LCD, DDR II 256 MB, 2 LAN, 4 COM, CompactFlash™, PC/104+, AT, Rev. A1.0

Optional Accessories

• TF-PFM-P13DW2-A10

PC/104 Board Power Supply Module with +5V & +12V Output PC/104 Rev A1.0 WiTAS II

• 170204010E

Power Cable

• 1701400205

COM Cable

• 1709100201

USB Cable

• 1701260201

Print Cable

• 1700100201

LAN Cable

• 1701080150

8-pin Front Panel

• 1701010150

10-pin Front Panel