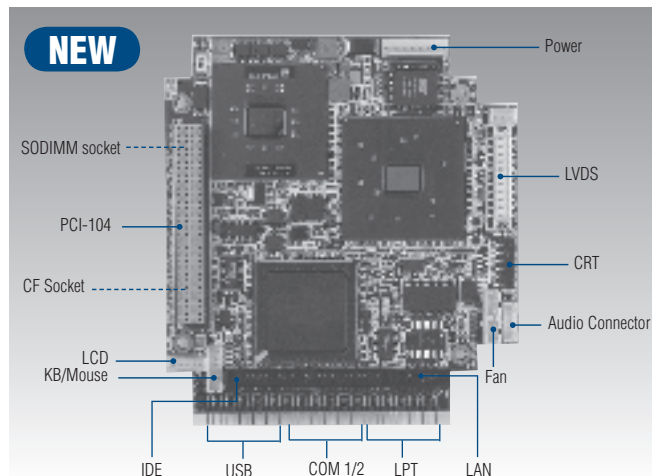


# PCM-3380

Intel® Pentium® M  
PCI-104 CPU Module



## Specifications

### General

- **CPU** Embedded Intel Pentium-M Processor 1.1 GHz, 1.4 GHz, 1.6 GHz and Celeron-M 600 MHz
- **2nd Cache Memory** 1 MB on the Pentium-M (Banias) processor. 512 KB on Celeron-M
- **System Chipset** Intel 855GME ICH4 Chipset 400MHz FSB
- **BIOS** Award 512 KB Flash BIOS
- **System Memory** 200 pin SODIMM sockets, support 128 MB to 1GB, accepts 128/256/512/1000 MB, DDR200/266/333 DRAM
- **Power Management** Supports Advanced Power Management /ACPI, Intel Speedstep
- **SSD** Supports CompactFlash Card Type I, Type II (option for Micro Drive)
- **Watch Dog Timer** 1~255 sec/min, 255-level –interval Watchdog timer, setup by software, selection, generates system reset
- **Expansion Interface** 120-pin PCI PC/104-Plus module connector

### I/O

- **I/O Interface** 1 x EIDE, 1 x LPT, 2 x RS232, 1 x K/B, 1 x Mouse
- **USB** 6 x USB 2.0, EHCI/UHCI specification compliant
- **Audio** ICH4 chip. AC'97 2.0 compliant. Supports Line-in, Line-out, Mic-in
- **I/O Expansion** Support for +5 V FAN, speed detect connector, Heat, Fan speed

### Ethernet

- **Chipset** Intel 82562EM, PCI Ethernet controller, IEEE 802.3u protocol compatible
- **Speed** 10/100Base-T
- **Interface** RJ-45

### Display

- **Chipset** Intel 855 GME  
Supports CRT Display  
Supports 2CH 36-bit LVDS LCD display  
Optimized Shared Memory Architecture, support 64MB/32MB frame buffer using system memory

## Features

- Embedded Intel® Pentium® M Processor 1.1 GHz, 1.4 GHz and 1.6 GHz (optional), Celeron® M 600 MHz
- Chipset: Intel® 855GME (Montara-GM+) GMCH/ICH4 Chipset 400 MHz FSB
- VGA/LCD controller with optimized Shared Memory Architecture (SMA)
- Supports dual display
- +5 V and +12 V power supply required
- 10/100Mbps PCI Ethernet interface, supports wake-on-LAN
- COM2 (5 V) supports power line connected on pin 9
- PCI-104 expansion connector
- Support for CompactFlash® Card (CFC) Type I Socket
- Supports 6 USB 2.0
- SODIMM socket support up to 1GB DDR SDRAM
- Supports audio function compliant with AC'97 2.0

## Mechanical and Environmental

- **Dimension (L x W)** 108 mm x 115 mm
- **Weight** 0.279 kg (with heat sink)
- **Operating Temperature** 0 – 60° C
- **Operating Humidity** 0% – 90% relative humidity, non-condensing

## Power

- **Power Supply Voltage** +5V±5 %, +12V±5 %
- **Power Consumption** Typical: +5 V @ 1.80 A (w/Celeron-M 600 MHz), +5 V @ 2.30 A (w/Pentium-M 1.1 GHz)  
+5 V @ 1.74 A (w/Pentium-M 1.1 GHz, SpeedStep function)  
Max. : +5 V @ 2.16 A (w/Celeron-M 600 MHz), +5 V @ 3.68 A (w/Pentium-M 1.1 GHz)  
+12 V @ 0.5 MA

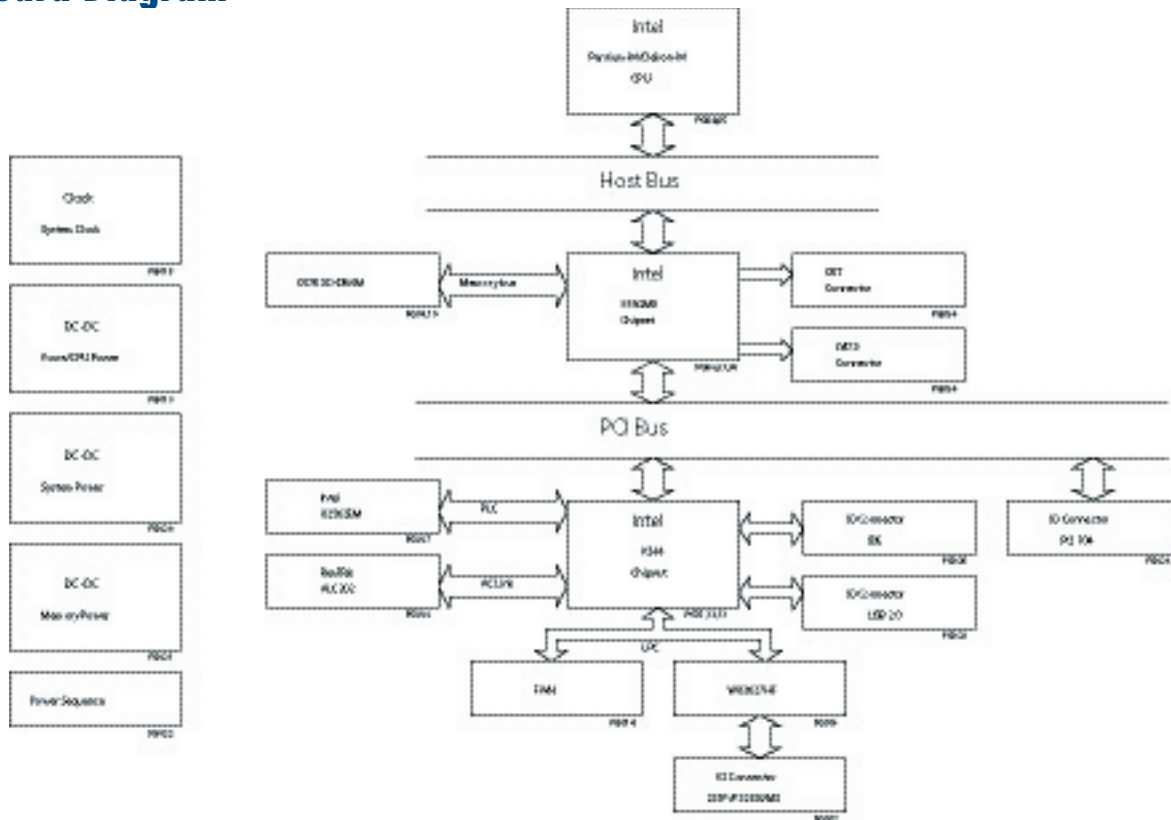
## Packing List

- 1 x PCM-3380 SBC
- 1 x BATTERY 3V/210 mAh cable CR2032WK with Wire ASS'Y (p/n:1750129010)
- 1 x Y-Cable external cable (p/n:1703060053)
- 1 x IDE cable (p/n:1701440350)
- 1 x Wire ATX power (p/n:1703200380)
- 1 x Ethernet RJ-45 Conn.conversion cable (p/n:1701100202)
- 1 x KB / MOUSE Y-cable (p/n:1700060202)
- 1 x COM port cable (p/n:1701200220)
- 1 x USB Cable (p/n:1700000897)
- 1 x VGA cable (p/n:1700000898)
- 1 x LPT port cable (p/n:1700000916)
- 1 x 44pin to 40pin IDE cable (p/n:1701440504)
- 1 x Audio cable (Line-in, Mic-in) (p/n:1700000918)

## Optional Accessories

- 1 x FDD cable (p/n:1700001531)

### Board Diagram



### Ordering Information

| Part No.        | CPU               | L2 Cache | Chipset | CRT | LVDS  | 10/100 | USB2 | RS-232 | LPT | CF | KB/MS | PCI-104 Connector | PC/104 Connector | Thermal Solution | Operation Temp. |
|-----------------|-------------------|----------|---------|-----|-------|--------|------|--------|-----|----|-------|-------------------|------------------|------------------|-----------------|
| PCM-3380F-S4A1  | LV Pentium M 1.4G | 2MB      | 855GME  | V   | 36bit | 1      | 6    | 2      | V   | V  | V     | V                 | X                | Passive          | 0-60 C          |
| PCM-3380F-S1A1  | Pentium M 1.6G    | 1MB      | 855GME  | V   | 36bit | 1      | 6    | 2      | V   | V  | V     | V                 | X                | Active           | 0-60 C          |
| PCM-3380F-S0A1  | LV Pentium M 1.1G | 1MB      | 855GME  | V   | 36bit | 1      | 6    | 2      | V   | V  | V     | V                 | X                | Passive          | 0-60 C          |
| PCM-3380F-M0A1  | ULV Celeron M 600 | 512KB    | 855GME  | V   | 36bit | 1      | 6    | 2      | V   | V  | V     | V                 | X                | Passive          | 0-60 C          |
| PCM-3380Z-S0A1  | LV Pentium M 1.1G | 1MB      | 855GME  | V   | 36bit | 1      | 6    | 2      | V   | V  | V     | V                 | X                | Passive          | -20-80 C        |
| PCM-3380Z-M0A1  | ULV Celeron M 600 | 512KB    | 855GME  | V   | 36bit | 1      | 6    | 2      | V   | V  | V     | V                 | X                | Passive          | -20-80 C        |
| PCM-3380Z1-M0A1 | ULV Celeron M 600 | 512KB    | 855GME  | V   | 36bit | 1      | 6    | 2      | V   | V  | V     | V                 | X                | Passive          | -30-70 C        |