



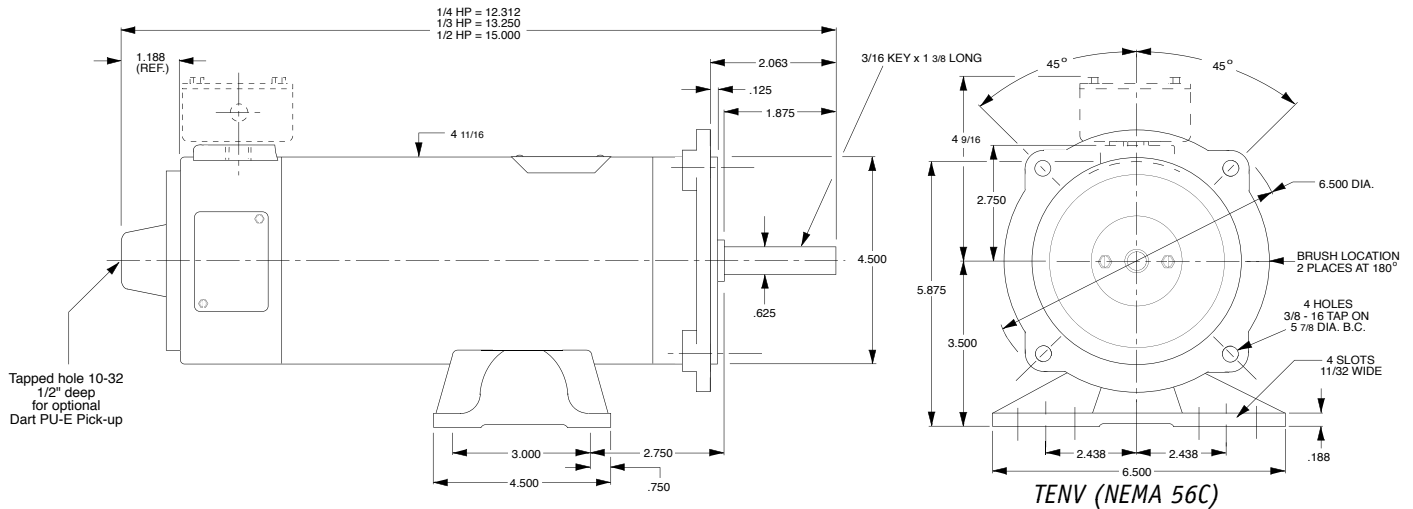
Standard DC Motors

The advantages of DC adjustable speed drives with PM motors for low horsepower applications are: higher starting torque, wider usable speed and torque range, simpler dynamic braking, lower system cost, faster response, smaller size, more efficient and reliable.

Standard features include: permanent magnetic field (1/4 horsepower to 2 horsepower), NEMA56 C-face and bolt-on mounting, 1750 RPM base speed, U.L., C.S.A. and C.E. mark listed, provisions for mounting Dart's PU-E pick-up, available from stock.

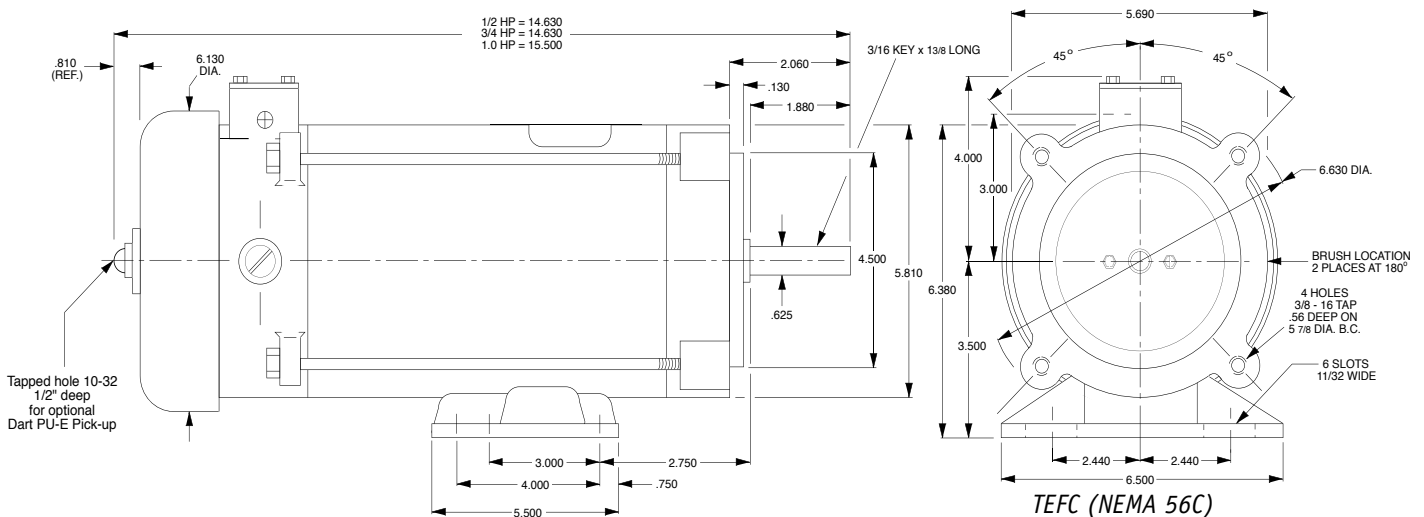
TENV MOTOR SPECIFICATIONS AND SELECTION (DIMENSIONS IN INCHES)

H.P.	ENCLOSURE	BASE SPEED	ARMATURE DC VOLTS	FULL LOAD AMPERAGE	FULL LOAD TORQUE	MOTOR MODEL NUMBER	APPROXIMATE SHIP WEIGHT
1/4	TENV	1750 RPM	90 VDC	2.5 Amps	0.75 lb. ft.	DMS1825B-56BC	26 lbs.
1/3	TENV	1750 RPM	90 VDC	3.2 Amps	1.00 lb. ft.	DMS1833B-56BC	28 lbs.
1/2	TENV	1750 RPM	90 VDC	4.8 Amps	1.50 lb. ft.	DMS1850B-56BC	31 lbs.



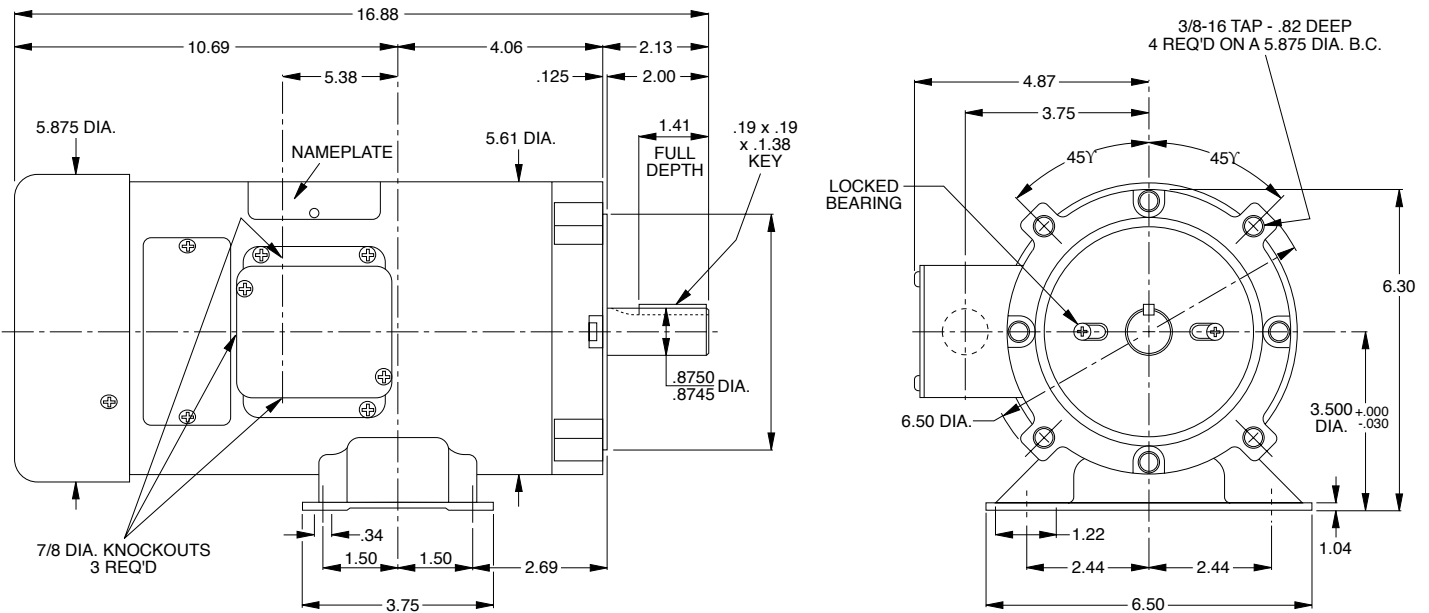
TEFC MOTOR SPECIFICATIONS AND SELECTION (DIMENSIONS IN INCHES)

H.P.	ENCLOSURE	BASE SPEED	ARMATURE DC VOLTS	FULL LOAD AMPERAGE	FULL LOAD TORQUE	MOTOR MODEL NUMBER	APPROXIMATE SHIP WEIGHT
3/4	TEFC	1750 RPM	90 VDC	7.0 Amps	2.25 lb. ft.	DMS1875B-56BC	39 lbs.
1	TEFC	1750 RPM	90 VDC	10.0 Amps	3.00 lb. ft.	DMS1810B-56BC	43 lbs.
1/2	TEFC	1750 RPM	180 VDC	2.5 Amps	1.50 lb. ft.	DMS18500B-56BC	31 lbs.
3/4	TEFC	1750 RPM	180 VDC	3.7 Amps	2.25 lb. ft.	DMS18750B-56BC	36 lbs.
1	TEFC	1750 RPM	180 VDC	5.0 Amps	3.00 lb. ft.	DMS18100B-56BC	42 lbs.



TEFC MOTOR SPECIFICATIONS AND SELECTION* (DIMENSIONS IN INCHES)

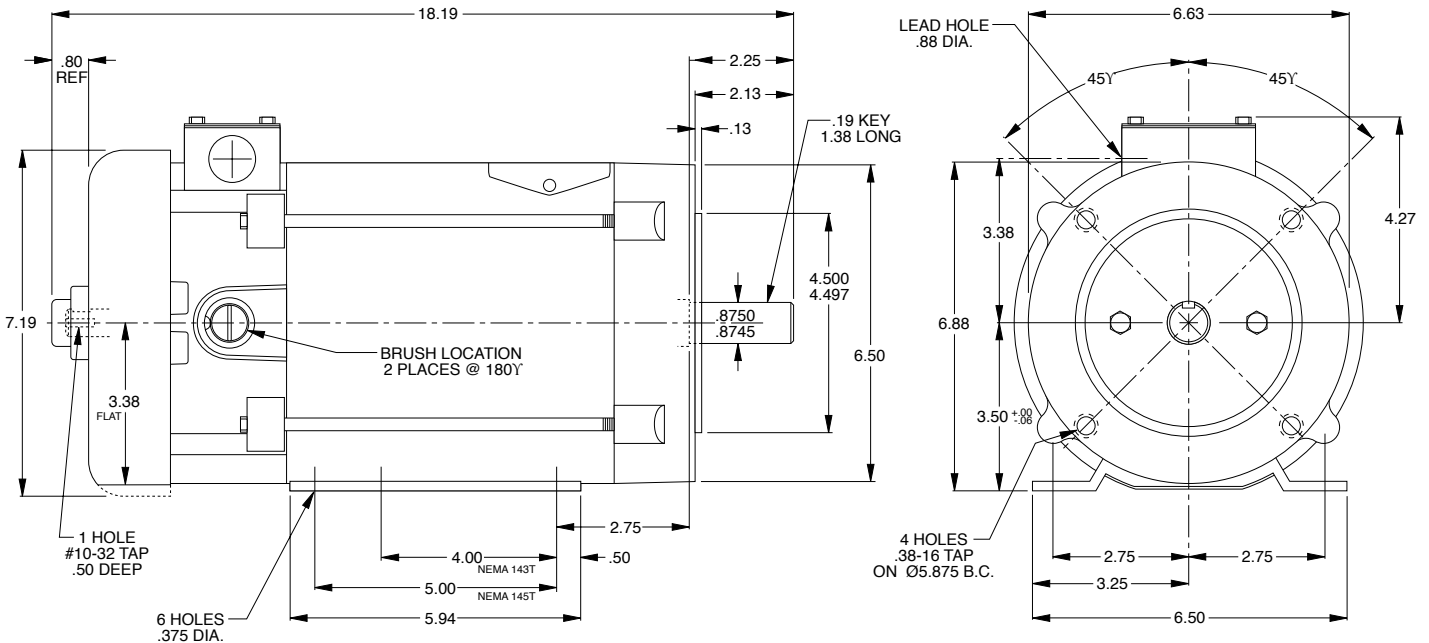
H.P.	ENCLOSURE	BASE SPEED	ARMATURE DC VOLTS	FULL LOAD AMPERAGE	FULL LOAD TORQUE	MOTOR MODEL NUMBER	APPROXIMATE SHIPPING WEIGHT
1.5	TEFC	1750RPM	180 VDC	7.6 Amps	4.50 lb. ft.	DMS18150L-145BC	50 lbs.



* NEMA Frame ZLS56CZ/145TC (NEMA 145TC frame; shaft 7/8" x 2 1/4" and NEMA 56 removable base).

TEFC MOTOR SPECIFICATIONS AND SELECTION* (DIMENSIONS IN INCHES)

H.P.	ENCLOSURE	BASE SPEED	ARMATURE DC VOLTS	FULL LOAD AMPERAGE	FULL LOAD TORQUE	MOTOR MODEL NUMBER	APPROXIMATE SHIPPING WEIGHT
2.0	TEFC	1750 RPM	180 VDC	9.6Amps	6.00lb.ft.	DMS18200B-145TC	75lbs.



* NEMA frame 145TC.

NOTES - TEFC AND TENV ENCLOSURES

- 1) 20:1 Speed range at constant torque.
- 2) Includes provision for Dart Control's PU-E pick-up, mounted on motor rear end shaft.
- 3) Keyway key and conduit box are supplied with motor.
- 4) Designs and specifications may change without notice.
- 5) All dimensions in inches unless noted otherwise.