

# WANsuite® 5370/5370M



## HIGHLIGHTS

56/64k WAN access device/IP router

TDM, Frame Relay, PPP

IP router enables IP packet routing using static or dynamic protocols

WANSight™ – Web-server interface for remote access with password lockout

Supports DHCP server and client

NAT/NAPT, PPP/NAPT for secure, flexible IP configuration

Built-in service aware technology for real-time measurement of bandwidth utilization, network delay and verifying SLAs

Support SNMPv.2 with email notification

Supports up to 128 DLCIs

Serial DBU

Automatic dial back-up via internal V.34 modem (5370M only)

APS on Data Ports

Verilink's WANsuite® family is a portfolio of next-generation, intelligent WAN access devices – ranging from low cost CSU/DSUs to fully integrated units. The WANsuite 5370/5370M displays this flexibility by providing enhancements to DDS network applications by including intelligent DSU, leased line, TDM, Frame Relay, Frame Relay statistics and diagnostics, PPP, IP routing and Supervisory Control and Data Acquisition (SCADA).

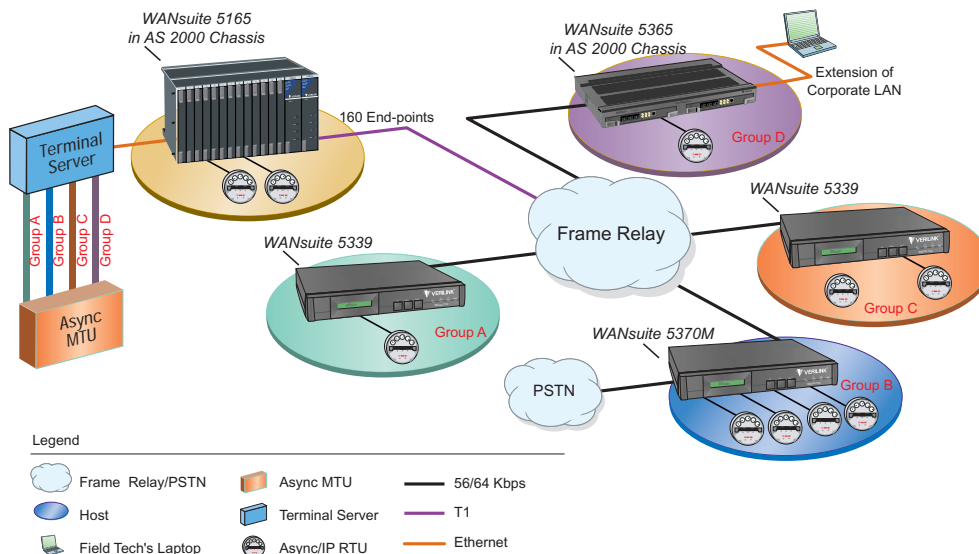
In addition the WANsuite 5370M, via an internal modem (V.34), provides back-up capabilities and an alternate connection to the network in the event of main link failure. Multiple options are provided for initiating dial back-up as well as restoring the original network connections. Security is provided via both password challenge/login as well as callback password security.

The WANsuite family offers simplified, cost effective, end-to-end network management capabilities. Web-based tools provide immediate benefits to network managers in terms of higher performance, lower cost, reduced complexity, increased manageability, and application readiness.

Verilink continually seeks solutions to problems associated with space limitations, high network costs and configuration. The WANsuite next-generation access devices give our customers greater flexibility and higher capacity than single-purpose devices — for about the same price.

Go to [www.verilink.com](http://www.verilink.com) or  
call 866.665.1515 for more information





## SPECIFICATIONS

### PART NUMBER(S) AND DESCRIPTION

1100013: WANsuite 5370 DDS DSU 4 ports, AC  
 1100020: WANsuite 5370 DDS DSU 4 ports, DC  
 1100096: WANsuite 5370M DDS DSU 4 ports, AC  
 1100097: WANsuite 5370M DDS DSU 4 ports, DC  
 Cables and Accessories Included with Units:  
 9-1544-619-009: RJ-48/RJ-48 Pin to Pin, 9 ft  
 33-00221: DB9M to DB9F, 6 ft  
 9-1001-128-1: Adapter plug, DB9M to DB25F  
 9-1001-129-006: DB9M to DB25F, 6 ft

### SERIAL INTERFACES

DTE Port(s): Software-selectable V.35, EIA-530, or RS-232; Supports Sync/Async and CTS/RTS flow control  
 Data Rate: Sync: 1200 - 115200 bps; Async: 300, 1200 - 115200 bps  
 Bundling: Contiguous, Alternating, and Random  
 Connection: DB-25 female  
 Auxiliary Port: RS-232; Supports Async and CTS/RTS flow control  
 Data Rate: Async: 1200 - 115200 bps  
 Connection: DB-9 female

### NETWORK INTERFACE

Line Rate: 56/64 kbps  
 Input Signal: Up to 49 dB of loss  
 Line Protection: 1000 V, fused input/output  
 Protocol: TDM, Frame Relay, PPP  
 Connection: RJ-48C, 100 ohms ± 5%

### INTEGRATED MODEM

Compatibility - CCITT V.34 compliant (5370M only)  
 Connection - RJ-11C

### ETHERNET INTERFACE

Connection: 8-pin modular  
 Compatibility: 10/100 Base-T, Autosensing  
 Protocols: ARP, RIP 1, RIP 2, OSPF, TCP/IP, un-numbered

### ADVANCED FEATURES

NAT/NAPT, PPP/NAPT  
 DHCP server/client  
 TCP server  
 IP Host Access

### MANAGEMENT INTERFACE

WANsight (embedded Web-server interface), VT100, Telnet, SNMPv.2, local supervisory port, Ethernet port

### INDUSTRY LISTINGS

FCC Compliance: Part 15 Subpart B, Class A, Part 68  
 US Safety: UL 1950 3rd Edition  
 Canadian Safety: CSA C22.2 No. 950-95  
 Industry Canada: CS-03, Issue 8

### DIAGNOSTICS

Performance: 15-min, 24-hr and 30-day monitoring (sampled every second)  
 Network Loops: Line, Payload, or Maintenance  
 DTE Port Loops: V.54 and Local  
 BERT: Marks, QRSS, 511, 2047, 215, and Spaces  
 Originate Ping  
 Email notification on trip event

### TIMING

Network interface or internal

### POWER REQUIREMENTS

Power Input: AC 100-240 V/DC 18-150 V auto-ranging

### MECHANICAL

#### WANsuite 5370/5370M

Mounting: Desktop  
 Dimensions: 11.75 in. (29.8 cm) W, 1.86 in. (4.7 cm) H, 8.75 in. (22.2 cm) D  
 Weight: 2.1 lb (0.97 kg)

### ENVIRONMENTAL

Operating Temperature: 0 to 50 °C (32 to 122 °F)  
 Storage Temperature: -20 to 65 °C (-4 to 149 °F)  
 Humidity: 95% maximum, non-condensing

### FRAME RELAY STATISTICS COLLECTED IN 96

#### 15-MINUTE INTERVALS

Tx/Rx frames and octets  
 Tx/Rx mgmt frames and octets  
 Rx frames with FECN, BECN  
 Rx invalid frames  
 Tx/Rx status inquiry frames  
 Tx/Rx status response frames  
 Rx invalid LMI frames  
 Peak/Average throughput  
 Rx frames with DE bit set  
 Tx excess CIR and Be

### LAYER 3 STATISTICS AND UP

Ethernet, IP, SNA, NetBIOS, IPX, PPP, TCP, UDP, FTP, TFTP, SNMP, RIP 1, RIP, BootP, SMTP, HTTP, ICMP, OSPF, I2TP, NC, SPX, IPX RIP, L2TP, H.323

### SUPERVISORY CONTROL AND DATA ACQUISITION (SCADA)

Diagnostics: Data monitor and data loopback  
 Asynchronous multicasting  
 SCADA traffic prioritization  
 Encryption per DLCI

### WARRANTY AND SUPPORT

Five-year warranty



DS-44-00262 (Rev. 3 8.03)

©2002 Verilink Corporation. Verilink, the Verilink logo, and WANsuite are registered trademarks of Verilink Corporation. Other brands or products mentioned may be trademarks or registered trademarks of their respective owners.  
 This document does not create any express or implied warranty about Verilink or about its products or services. Verilink's sole warranty is contained in its product warranty. The end-user documentation shipped with Verilink products constitutes the sole specifications referred to in the product warranty. Verilink has made reasonable efforts to verify that the information contained herein is accurate, but Verilink assumes no responsibility for its use or any infringement of patents or other rights of third parties that may result. The customer is solely responsible for verifying the suitability of Verilink's products for its use. Specifications are subject to change without notice.

