

Product Overview

The Omni 7000MPD is the industry's first truly "modular payment device". The terminal has been designed with true hardware modularity such that specific features can be added at the VeriFone factory at time of purchase or they can be added in the retail POS lane at a later date. Modular features include the ability to add one or all of the following capabilities to the base platform:

- Signature Capture
- Ethernet/USB
- Smart Card
- Contactless Smart Card (ISO 14443)



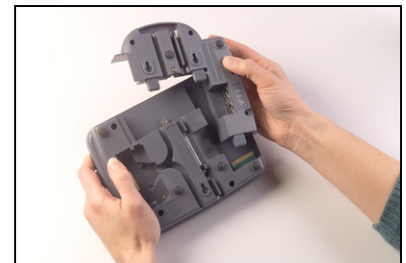
Product Design

To achieve the flexibility of feature expansion, the Omni 7000MPD has been designed with three primary hardware components. By varying the configuration of these 3 primary "building blocks", VeriFone is able to offer the exact product required by our customers for today and tomorrow.

- 1.) The Base Platform – The base platform is the foundation from which the product is built to support all standard transactions. The base-level product includes the 32-bit processor, internal PINpad security, standard display lens, 21 keys, triple track mag-stripe reader, and 3 serial ports available via the multi-port connector cable. The base terminal carries a 3 year warranty and is available in the following 2 variants:
 - a. Omni 7000 Terminal

- 2.) The Rear Module – On the back of the base terminal is an "L" shaped cavity that can be separated from the base platform by removing a single screw. It is blank in the base terminal. Rear module upgrades available today include:

- a. Ethernet & USB Ports (RJ45 Connectors)
- b. Smart Card Reader (includes 3 SAMS)
- c. Ethernet & USB Ports + Smart Card
- d. Contactless Smart Card
- e. Contactless Smart Card & Ethernet & USB Ports



- 3.) The Lens Module – On the front of the Omni 7000 is the removable lens module. The base terminal comes with a standard display lens. Loosen two screws on the top of the lens module to remove it. The following upgrade module is available:

- a. Signature Capture Touch-Screen Lens (1 year warranty)



M Level Numbers – (Base + Modules)

Omni 7000MPD terminals are available pre-configured to include the base platform, rear module upgrades, and lens module upgrade.

- Signature Capture Module Notes: Stylus/Holsters are included on Signature Capture M-Level units. Note: there are 2 different stylus holsters: Top and Left. The "left" version is the default and is not labeled; if "top" is preferred, select the M-Level part number that specifies "top" or "t". The Left sided holster is the recommended version—it leaves the top of the product available for the addition of future modules (i.e. Smart Card). *The signature capture touch panel lens always carries a 1-year warranty.*
- Ethernet & Smart Card Module Notes: The base and rear modules include a 3-year warranty when purchased together under the M-level part numbers. *Rear modules sold separately from the base as P-level part numbers receive a 1-year warranty.*
- M-Level variants of the Omni 7000MPD **do not include** the power supply or any cables; these items are accessories that must be ordered separately. (See Cables Section – Page 3)



M077-011-00

M077-011-00	OMNI 7000 TERMINAL
M077-012-00	OMNI 7000 SIGNATURE CAP
M077-013-00	OMNI 7000 SIGNATURE CAP-TOP
M077-021-00	OMNI 7000 ETHERNET/USB
M077-022-00	OMNI 7000 SIG CAP, ETHERNET/USB
M077-023-00	OMNI 7000 SIG CAP-TOP, ETHERNET/USB
M077-031-00	OMNI 7000 SMART CARD
M077-032-00	OMNI 7000 SC/SIGNATURE CAP
M077-033-00	OMNI 7000 SC/SIGNATURE CAP-TOP
M077-041-00	OMNI 7000 SC/ETHERNET/USB
M077-042-00	OMNI 7000 SC/SIG CAP/ETHERNET/USB
M077-051-00	OMNI 7000 CONTACTLESS TERMINAL
M077-052-00	OMNI 7000 CONTACTLESS SIG-CAP-L
M077-061-00	OMNI 7000 CTL-ETH-USB TERMINAL
M077-062-00	OMNI 7000 CTL-ETH-USB SIG CAP-L



M077-013-00

****The following M – Levels are LAN variants of the above M-Levels****

LAN variants are "optically isolated" for VFI PINSTRIPE LAN

M077-111-00	Omni 7000 LAN Terminal
M077-112-00	Omni 7000 LAN Signature Cap-L
M077-113-00	Omni 7000 LAN Signature Cap-T
M077-121-00	Omni 7000 LAN Ethernet-USB
M077-122-00	Omni 7000 LAN Sig-Cap-L, Ether-USB



M077-032-00

- M077-123-00 Omni 7000 LAN Sig-Cap-T, Ether-USB
- M077-131-00 Omni 7000 LAN Smart Card
- M077-132-00 Omni 7000 LAN SC, Signature Cap-L
- M077-141-00 Omni 7000 LAN SC, Ethernet-USB
- M077-142-00 Omni 7000 LAN SC, SigCap, Ether-USB

ACRONYM DEFINITIONS	
SIGCAP	Signature Capture Enabled (Stylus Holster Attached -Left)
SW	Stylus with Switch for consumer driven finger or stylus input
NS	Stylus with No Switch for application drive finger or stylsu input
STL	Stylus
USB	USB Connectivity (No Host Capability)
ETH	Ethernet Connectivity
CTL	Contactless Smart Card Module (ISO 14443)
TOP	Stylus holder on top
L	Stylus Holder on left
SC	Smart Card

P Level Numbers for Modules sold separately

The following P-Levels are for the upgrade modules only. These items do not need to be ordered if ordering M-level part numbers that include the modules. Instead, these P-Levels are ordered for field upgrade or replacement of modules.

- Important: P-Level modules carry a 1 year warranty
- The Signature Capture Lens (P077-002-00) is for the Lens only and does not include the stylus/holster assembly. The Stylus & Holster must be ordered as Accessories when upgrading to signature capture. This Lens is a 4-Wire resistive touch panel.

- P077-002-00 OMNI 7000 FRU DISPLAY LENS, SIGCAP
- P077-020-00 OMNI 7000 FRU MODULE ETHERNET-USB
- P077-030-00 OMNI 7000 FRU MODULE, SC (3 SAM)
- P077-040-00 OMNI 7000 FRU MODULE, SC/ETH/USB

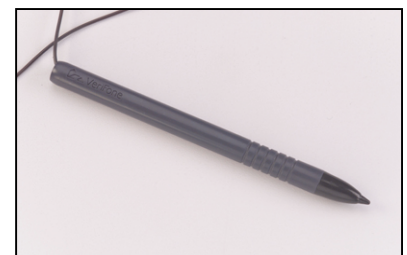


P077-002-00

Accessories

Overlays, Stylus, Holsters, and Mounting Devices are all available as separate accessories.

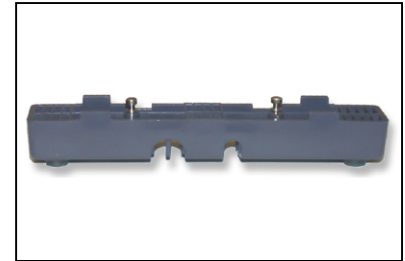
- Mounting Devices: Because the Omni 7000 utilizes VeriFone's standard 3-keyhole pattern on the back of the product, Everest and Omni 490 mounting products can be used.
- The Wedge (22967-01) is available for use when the Omni 7000 is placed directly on the counter and not mounted to a stand. The



22932-01

wedge raises the back of the product to an optimum angle for signature capture.

22647-01	OVERLAY, MAIN O7000
22648-01	PRIVACY SHIELD, O7000
22930-01	OMNI 7XXX HOLSTER, TOP
22931-01	OMNI 7XXX HOLSTER, LEFT
22967-01	ASSY, WEDGE O7XXX
22932-01	OMNI 7000 ASSY, STYLUS w/TETHER

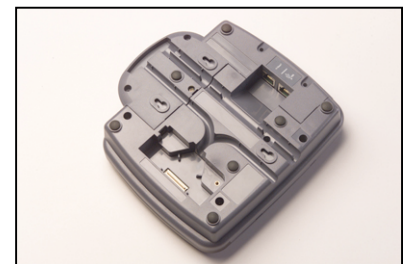


22967-01

Cables and Power Supplies

None of the P-Level or M-Level numbers include any power supplies or cables. The Omni 7000MPD is compatible with all of the Everest Multiport Cables and power supplies as follows:

04250-01	PWR PACK, 120V A 12VDC 1A
17881-01	CABLE, EVEREST TO 4683 (SDL4)
17882-01	CABLE, EVEREST TO 4683 W/LAN(M-DIN)
17883-01	CABLE, EVEREST TO LAN (RJ11) 5M
17883-02	CABLE, EVEREST TO LAN (RJ11) 5.5M
17884-01	CABLE, EVEREST TO RS232
17885-01	CABLE, EVEREST TO IBM AT (DB9)
22572-06	CABLE, EVEREST TO IBM (SDL4 ONLY)
13984-01	CABLE, EVEREST TO IBM SDL4 WITH SDL4 EXPANSION PORTS
04745-XX	CABLE, EVEREST MULTIPOINT TO PRINTER P250 OR P900
03020-XX	CABLE, EVEREST MULTIPOINT MINIDIN-6 TO EXTERNAL PINPAD
03626-XX	CABLE, EVEREST MULTIPOINT TO LAN (RJ11) (W/17882-01 ONLY)
03018-XX	CABLE, EVEREST MULTIPOINT TO DB9 SERIAL RS232
03017-XX	CABLE, EVEREST MULTIPOINT TO DB25 SERIAL RS232
05555-XX	CABLE, EVEREST MULTIPOINT TO CR600



999-XXXXX-XX Warranty and Service

999-BPP-0016	3-yr Buyer Protection Program (included)
999-BPP-0017	5-yr Buyer Protection Program (additional fee)

*Customized deployment and next business day equipment replacement options are available. For more information, call your VeriFone sales representative.

Developers Tools

V006-078-01-PK PKG, OMNI 7XXX SW DEVELOPMT TOOLKIT
 P006-211-07-MK KIT, TXO WORKBENCH VER 5.0
 P006-278-01-MK KIT, OMNI 7XXX PROG SUPPORT PKG

Part Number Definition

