

# RIC-E1, RIC-T1

## E1, T1 Interface Converters



### FEATURES

- Convert from V.35, X.21, V.36, RS-530 to E1 or T1 interfaces
- Connect 10BaseT and 100BaseT LANs and VLANs over E1 or T1 services
- Integrated IP router for connecting IP domains over E1/T1 services
- 10/100BaseT bridge supporting IEEE 802.3x flow control and backpressure
- Diagnostic loopback activation in compliance with ITU V.54 standard
- Available as cards for RAD's ASM-MN-214 card cage
- Plug and play

### DESCRIPTION

- RIC-E1 and RIC-T1 interface converters enable communication between devices with E1/T1 interfaces and equipment with V.35, X.21, V.36, RS-530 interfaces.
- When equipped with the new IR-ETH/V interface module, RIC-E1 and RIC-T1 transparently connect remote LANs and VLANs over unframed E1/T1 links utilizing the full E1/T1 bandwidth. The IR-ETH/V interface module supports autonegotiation, allowing connection without additional configuration.
- RIC-E1 and RIC-T1 equipped with the IR-IP interface module operate as IP gateways, forwarding IP packets destined to the WAN. This saves the cost of an IP router equipped with an E1/T1 interface.
- Front panel LEDs indicate transmit/receive activity, E1/T1 signal loss condition, and diagnostic loopback operation. Rear panel LEDs of the Ethernet interface modules indicate the LAN status and activity.
- RIC-E1 and RIC-T1 are available as plug-in cards for RAD's ASM-MN-214, 19-inch card cage.

### SPECIFICATIONS

#### E1/T1 INTERFACE

- **Data Transmission**  
Synchronous, full duplex
- **Standard**  
E1 or T1, unframed
- **Line Code**
  - E1: HDB3 or AMI
  - T1: B8ZS or AMI
- **Line Impedance**
  - E1: 120 $\Omega$ , balanced and 75 $\Omega$ , unbalanced
  - T1: 100 $\Omega$ , balanced
- **Range**  
Up to 300m (1000 ft) over 24 AWG (0.5 mm) cable
- **Connectors**
  - E1: RJ-45, 8-pin, balanced and two BNC coaxial, unbalanced
  - T1: RJ-45, 8-pin, balanced

#### DTE INTERFACE

- **Type**
  - V.35: 34-pin, female
  - X.21: 15-pin, D-type, female
  - RS-530: 25-pin, D-type, female
  - V.36: 37-pin, D-type, female, via adapter cable
  - IR-ETH (Ethernet bridge): RJ-45 or BNC
  - IR-ETH/V (Ethernet/Fast Ethernet bridge): RJ-45
  - IR-IP (IP router): RJ-45

**Note:** For the specifications of the Ethernet interface modules, refer to Table 1.

# RIC-E1, RIC-T1

## E1, T1 Interface Converters

### GENERAL

#### • Timing

- Received, from the G.703 line
- External, from the attached DTE
- Internal, from internal oscillator

**Note:** Units with Ethernet interface modules do not support external clock.

#### • Diagnostics

Local analog loopback (LLB) in compliance with V.54 standard (loop 3), activated from RIC-E1 and RIC-T1 or DTE interface circuit 141 (not available for X.21 and Ethernet interfaces)

#### • Physical

Height: 40 mm / 1.5 in  
Width: 190 mm / 7.4 in  
Depth: 160 mm / 6.2 in  
Weight: 0.6 kg / 1.3 lb

#### • Indicators

PWR (green) – Power is ON  
RXD (yellow) – Data is received from the link  
TXD (yellow) – Data is transmitted to the link  
LOS (red) – No E1/T1 data is received from the link  
TST (red) – A loopback is active (not relevant for the Ethernet interface modules)  
LINK (green) – LAN is connected to IR-ETH, IR-ETH/V or IR-IP  
ACT (yellow) – Transmit or receive activity detected on the Ethernet link of IR-ETH/V or IR-IP  
100M (green) – LAN operates at 100 Mbps (IR-ETH/V)

#### • Power

AC: 100–240 VAC, 47–63 Hz  
DC: 24 or -48 VDC

#### • Power Consumption

RIC-E1, RIC-T1: 3W max  
RIC-E1/R, RIC-T1/R: 5.2W max

#### • Environment

Temperature: 0–50°C/32–122°F  
Humidity: Up to 90%, non-condensing

## ORDERING

### RIC-E1/\*/#

E1 interface converter

### RIC-T1/\*/#

T1 interface converter

### RIC-E1/R/#

E1 interface converter, card version for ASM-MN-214 card cage

### RIC-T1/R/#

T1 interface converter, card version for ASM-MN-214 card cage

\* Specify power supply:  
AC for 100 to 240 VAC  
24 for 24 VDC  
48 for -48 VDC

# Specify DTE interface type:  
V35 for V.35 interface  
X21 for X.21 interface  
V36 for V.36 interface  
530 for RS-530 interface  
UTP for IR-ETH module with RJ-45 connector  
BNC for IR-ETH module with BNC connector  
UTP/QN for IR-ETH/V module  
UTP/IP for IR-IP module

Table 1. Ethernet Interface Modules Characteristics

Interface Module	LAN Table [addresses]	Throughput [pps]	Buffer [frames]	Latency [μs]	Line Code	WAN Protocol
IR-ETH	10,000	3,990	256	350 (10 Mbps LAN rate)	Manchester	HDLC
IR-ETH/V	2,048	4,050	120	300 (100 Mbps LAN rate)	Manchester (10BT) MLT3 (100BT)	HDLC
IR-IP	10,000	3,990	256	350 (10 Mbps LAN rate)	Manchester	• PPP (PAP/CHAP) • Frame Relay (RFC 1490) • HDLC

**Notes:** All Ethernet interface modules conform to the IEEE 802.3/Ethernet V2 standard. Additionally, IR-ETH/V complies with the requirements of IEEE 802.1q (relevant parts), 802.1p and 802.3x. Throughput and latency are calculated for the 64-byte frames and 2 Mbps WAN rate.

## APPLICATION

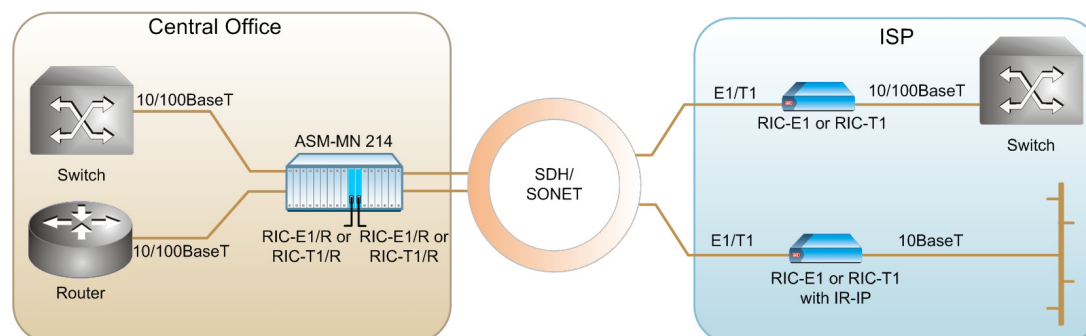


Figure 1. Connecting LANs over SDH/SONET Services



data communications

www.rad.com

- International Headquarters**  
24 Raoul Wallenberg Street  
Tel Aviv 69719, Israel  
Tel: (972) 3-6458181  
Fax: (972) 3-6498250, 6474436  
Email: market@rad.com
- U.S. Headquarters**  
900 Corporate Drive  
Mahwah, NJ 07430  
Tel: (201) 529-1100  
Toll free: 1-800-444-7234  
Fax: (201) 529-5777  
Email: market@radusa.com

269-100-12/04