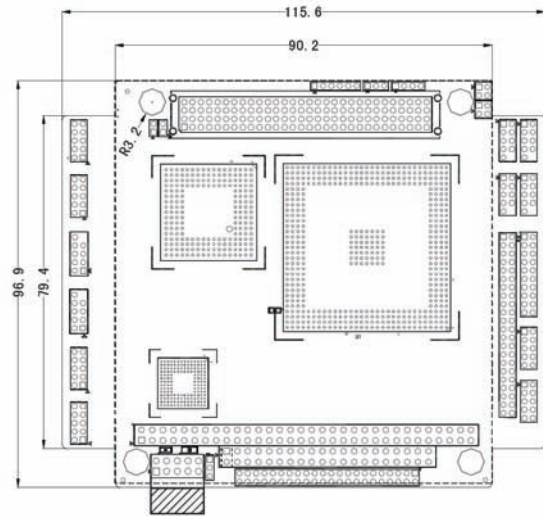
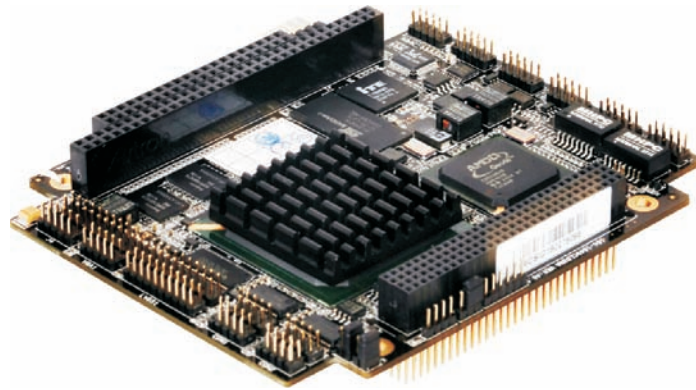
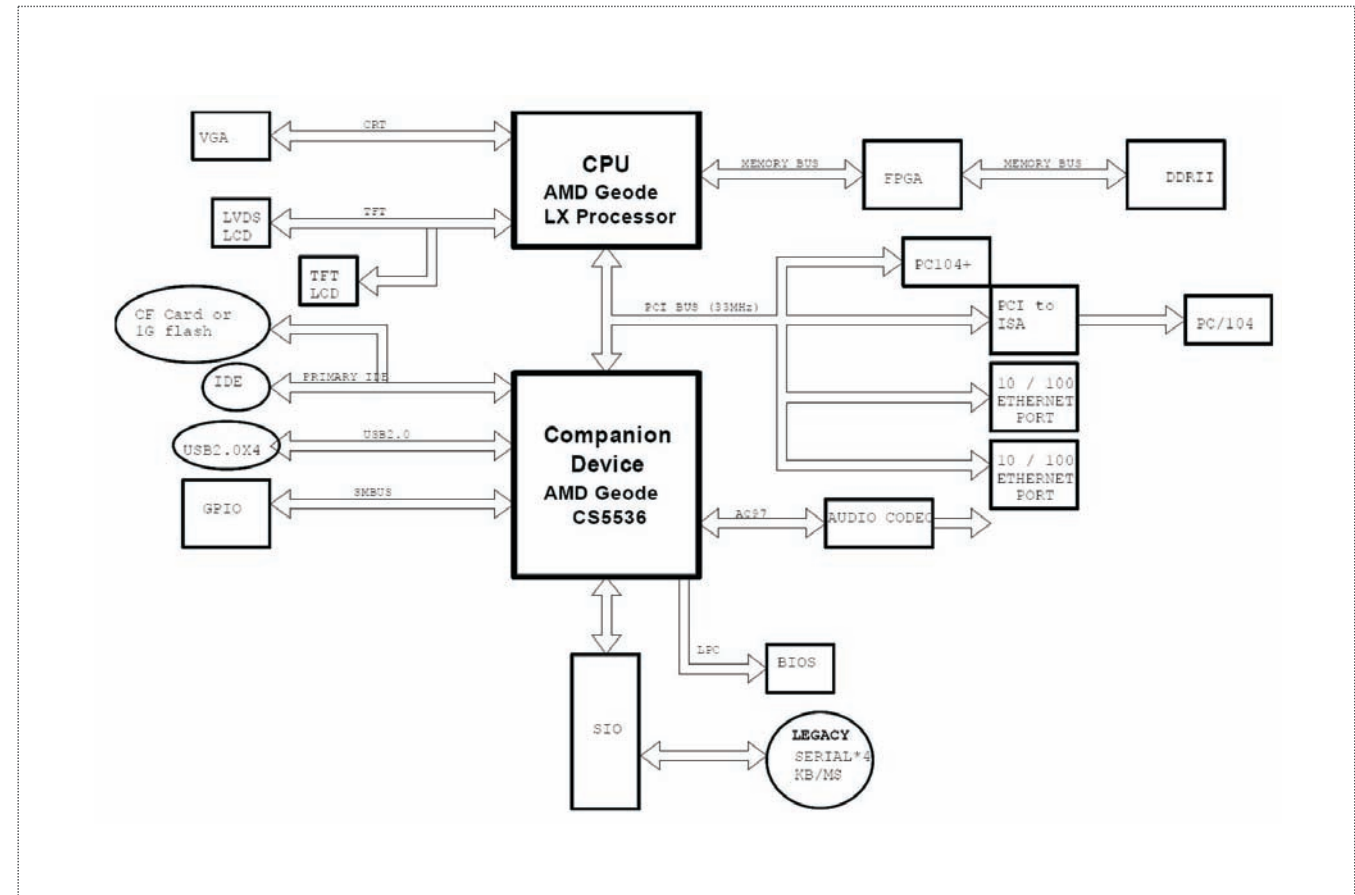


# 104-1649CLD2NA

PC/104 SBC with AMD Geode CPU/VGA/LVDS/2LAN/Audio



## Board Diagram



## Features

- AMD LX800 500MHz CPU
- Onboard 512MB DDR2 memory
- 1 x PC/104 slot; 1 x PC/104+ slot
- Supports 4 x USB2.0, 4 x COM, 1 x IDE, 1 x CF, 8 x DI/O, 1 x PS/2
- Supports VGA, LCD and LVDS display

## Specifications

System	
Processor	AMD LX800 500MHz CPU
Chipset	AMD Geode™ CS5536 chipset
Memory	Onboard 512MB DDR2 memory
Hardware Monitor	Monitors CPU temperature, voltage and fan speed, supporting ACPI
Watchdog Timer	1~255 sec./min. timer system reset or interrupt, setup by software
Expansion Interface	1 x PC/104 slot; 1 x PC/104+ slot

Storage	
IDE	1 x IDE port
Serial ATA	N/A
Floppy	N/A
CF	1 x CF port
DOC/DOM	N/A

I/O Interface	
USB	4 x USB2.0 Port
Serial Port	2 x RS232, 2 x RS422/485
Parallel Port	N/A
GPIO	4 x Digital Input; 4 x Digital Output
Audio	Supports AC'97, available interface of Speaker-out, Line-in and Mic-in
Keyboard/Mouse	1 x PS/2

Display	
Chipset	AMD Geode® LX800 integrated
Memory	16MB shared memory
Display port	VGA, LCD and LVDS

Ethernet	
Chipset	2 x RTL8139D
Speed	10/100Mbps
Connector	2 x RJ45

Mechanical and Environmental	
Dimensions	115.6mm x 97mm
Operating Temperature	-40°C~85°C
Storage Temperature	N/A
Operating Humidity	5%-90%, non-condensing

Power	
Power Supply	Single +5V power supply
Power consumption	5W

Operating System	
Windows OS	Windows XP
Embedded OS	Linux/XP Embedded

## Available Accessories

Part Number	Name	Description	Qty.
2360-002581	Audio cable	2*5(Female)(2.0) to 3AUDIO /L=300	1
2360-008781	IDE cable	40P to 44P(2.0) /L=550mm	1
2360-012641	VGA cable	L=300mm	1
2360-014781	USB cable	2*5PIN(2.0) to USB/L=550mm	1
2360-012651	DC cable	2*5PIN(Female) to 4P(male)(5.08) /L=250mm	1
2360-027521	COM cable	L=300mm	1
2192-010051	Driver CD	104-1649CLD2NA/VER:C00	1

## Ordering Information

Part Number	Model Number	Description
0030-013900	104-1649CLD2NA-6PI	PC/104+ /Onboard AMD LX600 CPU /512MB DDRII /VGA+LVDS+TTL /CF slot/1xIDE(44pin) /2LAN/4xUSB /2xRS422/485 /2xRS232 /1xAC'97
0030-013910	104-1649CLD2NA-8P	PCI/104 /Onboard AMD LX800 CPU /512MB DDRII /VGA+LVDS+TTL /CF slot /1xIDE(44pin) /2LAN /4xUSB /2xRS422/485 /2xRS232 /1xLPT /1xAC'97
0030-013920	104-1649CLD2NA-8PIM	PC/104+ / Onboard AMD LX800 CPU/512MB DDRII /VGA+LVDS+TTL /Onboard 1G CF /1xIDE(44pin) /2LAN /4xUSB /2xRS422/485 /2xRS232 /1xLPT /1xAC'97