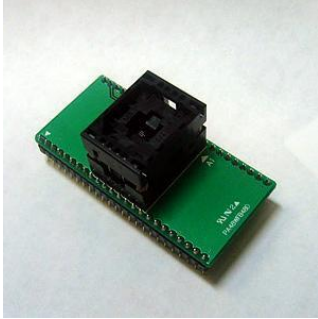


# 48 PIN BGA SOCKET ADAPTER

## Model : PA48WFB48D

This adapter connects the pins of a 48 ball BGA device to a 48 pin DIP equivalent. It accepts a BGA device and plugs into a DIP socket.



### Order No.

► PA48WFB48D

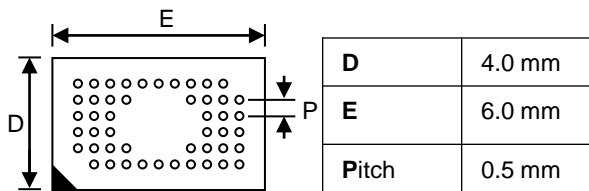
Socket manufacture (Texas Instruments), Socket type (Open)

The PA48WFB48 socket adapter accepts the device family below :

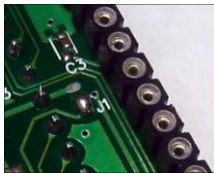
SST SST39WF400A

\* Note : This adapter should be used for 1.8V devices only (refer to the diagram below for 3.0V setting)

The BGA socket accepts packages with the dimensions listed below :

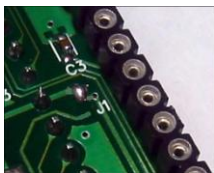


A1



#### Jumper Default : 1.8v

You can use the adapter without any modifications.



#### Jumper setting for 3.0v

You must disconnect J1 and re-connect J1 as shown to the left.

The following chart shows all pin connections Between BGA socket and DIP plug.

BGA48	DIP48	DIP48	BGA48
L4	1	48	L3
L5	2	47	D2
K5	3	46	L1
K4	4	45	K1
K6	5	44	L2
J5	6	43	J1
J6	7	42	K2
J4	8	41	H1
H6	9	40	J2
H5	10	39	G1
G6	11	38	J3
H2	12	37	F1
F6	13	36	K3
E6	14	35	E1
D5	15	34	C3
C4	16	33	D1
D6	17	32	C2
C5	18	31	C1
C6	19	30	B3
B4	20	29	B1
B6	21	28	B2
B5	22	27	A2
A6	23	26	A3
A5	24	25	A4