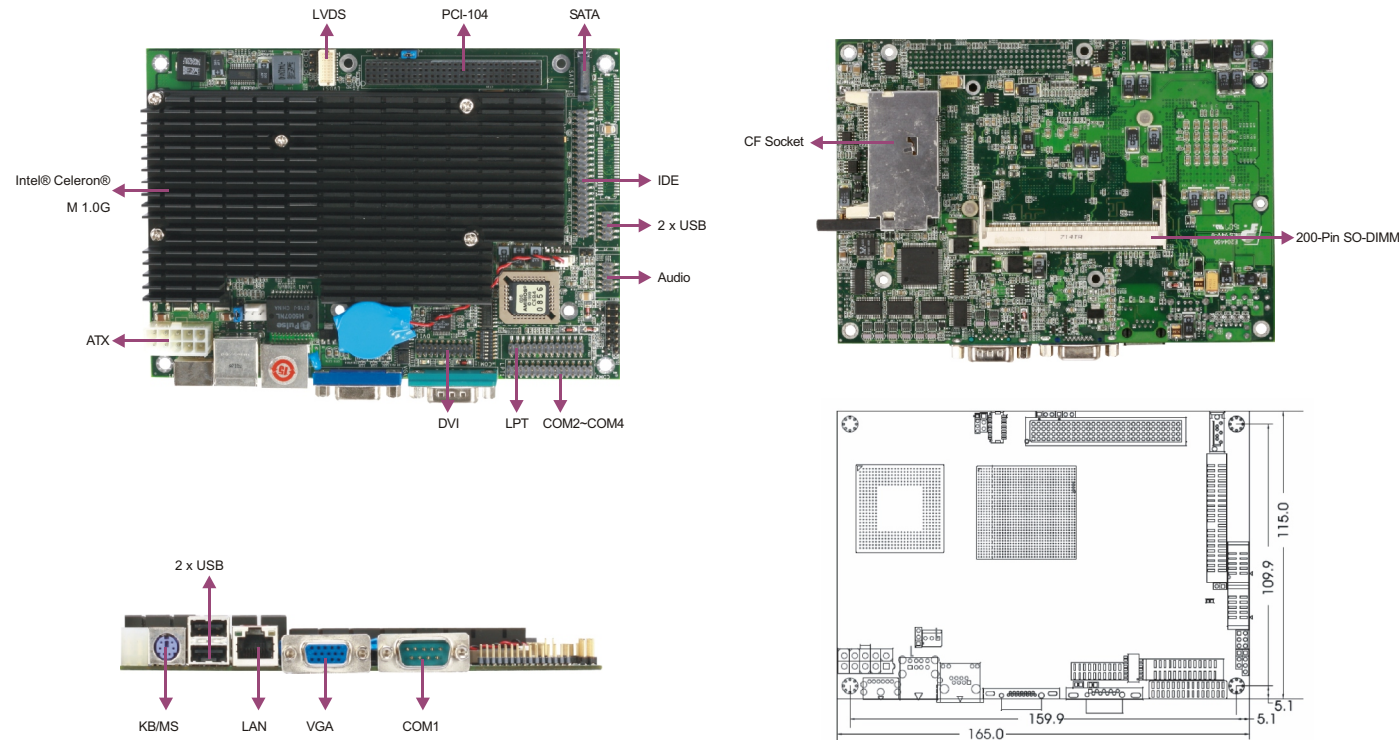
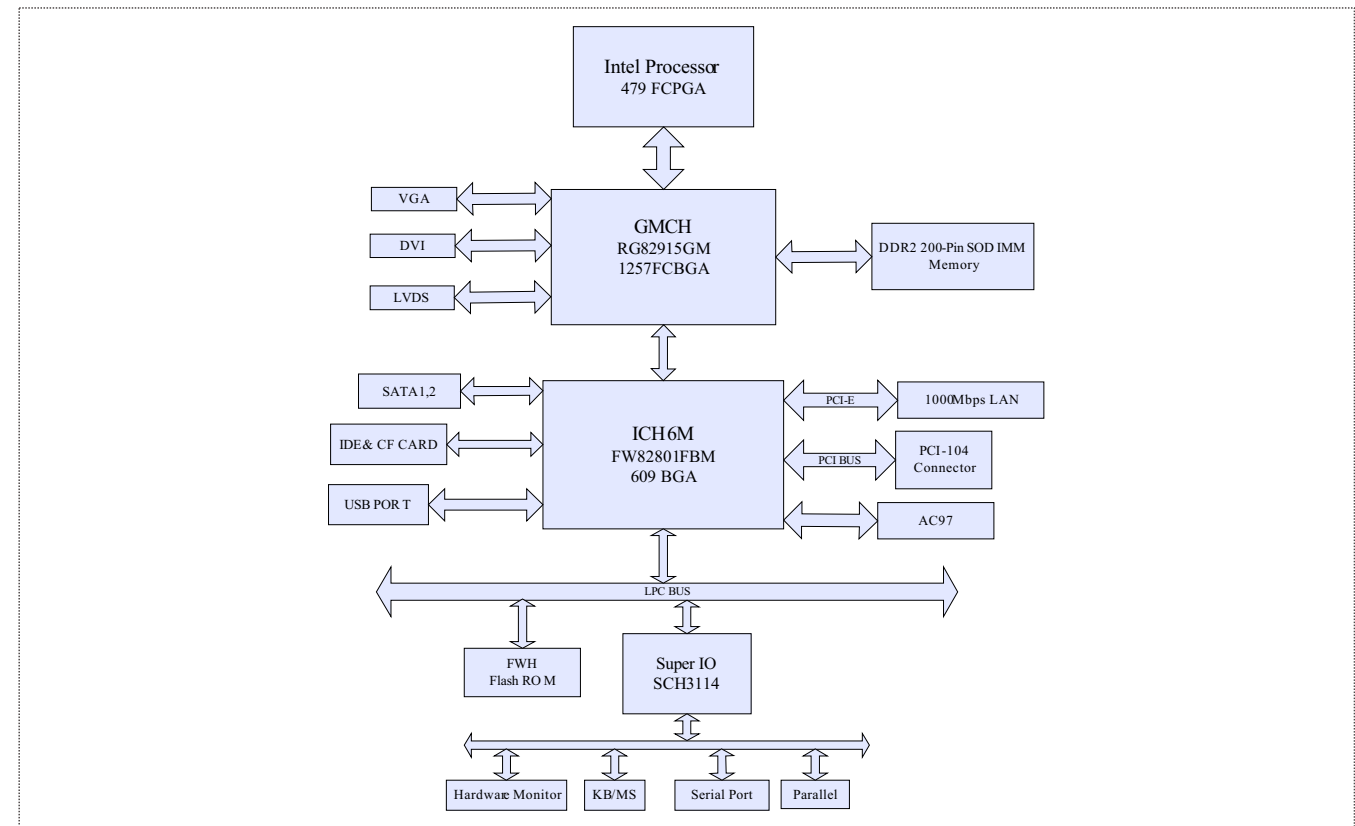


# EC4-1711CLDNA

EPIC SBC with CPU and LCD/VGA/SSD/LAN/Audio



## Board Diagram



## Features

- Onboard Intel® Celeron® M/Pentium® M CPU
- Supports PCI-104 Plus slot and PCMCIA slot
- Intel® 915GM chipset. Supports VGA+LVDS dual display, with resolution up to 2048 x 1536
- One SATA interface
- Four COM ports, four USB 2.0 ports
- Supports CompactFlash



## Specifications

System	
Processor	Intel® Celeron® M/Pentium® M CPU, 400/533MHz FSB, Celeron® M 800MHz~1.5GHz, Pentium® M 1.4GHz~2.0GHz
Chipset	Intel® 915GM + ICH6-M
Memory	1 x 200-pin SODIMM socket, DDR2 400/533MHz up to 1GB
Hardware Monitor	Monitors CPU temperature, voltage and fan speed
Watchdog Timer	1~255 sec./min. timer system reset or interrupt, setup by software
Expansion Interface	PCI-104 bus, 1 x PCMCIA Type I/II socket
Storage	
IDE	1 x ATA 100 port supporting 2 x IDE device
Serial ATA	1 x Serial ATA 150MB/S interface
Floppy	N/A
CompactFlash	1 x CompactFlash socket
DOC/DOM	N/A
I/O Interface	
USB	4 x USB2.0
Serial Port	3 x RS-232, 1 x RS232/RS422/RS485
Parallel Port	1 x LPT
IrDA	N/A
GPIO	N/A
Audio	AC'97 Speaker-out, Line-in and Mic-in

Display	
Display Controller	Intel® 915GM integrates Intel® GMA900 based 32-bit 3D graphics engine. Kernel runs at 320MHz
Display Memory	128 MB shared video memory
Resolution	CRT mode: 2048 x 1536@75Hz/LVDS mode: 1600 x 1200@60Hz
Dual Display	Supports VGA+LVDS, LVDS+DVI, VGA+DVI dual display
Ethernet	
Ethernet Controller	Intel® 82573ET
Speed	10/100/1000Mbps
Connector Interface	1 x RJ45
Mechanical and Environmental	
Dimensions	165mm x 115mm
Operating Temperature	0°C~60°C
Storage Temperature	N/A
Operating Humidity	5%-90%, non-condensing
Power	
Power Supply	10-pin ATX power supply
Power Consumption	N/A
Operating System	
Windows OS	Windows2000/Windows XP
Embedded OS	Linux/XP Embedded

## Available Accessories

Part Number	Name	Description	Qty.
—	User's Manual/RoHS	EC4-1711CLDNA	1
2330-000041	Jumper/RoHS	2.54mm pitch, blue	4
2360-005031	Y-cable for keyboard and mouse/RoHS	One Mini-DIN port to two PS/2 ports, length: 250mm/RoHS	1
2360-008781	HDD cable/RoHS	40 Pin to 44 Pin (2.0mm pitch), length: 550mm/RoHS	1
2360-011211	Audio cable with bracket/RoHS	Three audio jacks to one 2x5 Pin connector (2.0mm pitch), length: 300mm/RoHS	1
2360-011221	Parallel port cable/RoHS	DB25 connector to 2x13 Pin connector (2.0mm pitch), length: 300mm/RoHS	1
2360-014781	Dual USB ports with bracket/RoHS	Two USB ports to one 2x5 Pin connector (2.0mm pitch), length: 550mm/RoHS	1
2360-014891	Power cable/RoHS	One male 20 Pin (2x10) port to female 2x5 Pin connector (4.2mm pitch), length: 150mm/RoHS	1
2360-014901	Serial port cable/RoHS	Three DB9 connector with stud to IDC 2x15 Pin 2.0mm pitch connector, length: 300mm	1
2360-014911	DVI cable/RoHS	DV1-D connector with screws to 2x10 Pin (2.0mm pitch) connector, length: 200mm	1
2360-017961	SATAHDD cable/RoHS	SATA7 Pin to SATA7 Pin with elbow connector, length: 550mm/RoHS	1
—	Setup Guide/RoHS	AMI/BIOS Setup Guide (for CORE/8)	1
—	User's Manual/RoHS	EC4-1711CLDNA	1

## Ordering Information

Part Number	Model Number	Description
0030-006620	EC4-1711CLDNA	Motherboard
0030-006621	EC4-1711CLDNA	Motherboard/RoHS